

## 2-BURNER GAS RANGE ON OPEN CUPBOARD

CODE  
CR0993549

MODEL  
D72/10CG

SERIE  
DIAMANTE70

Project: .....

Rev.: .....

Zone: .....

Location: .....



we innovate cooking



### GENERAL FEATURES

- Diamante 70 is available on the worktop, on a compartment base and on ovens in a range of solutions, ideally suited to a vast range of uses and settings, from the smallest to medium and large kitchens. All tops are laser cut to ensure that all components fit together perfectly.
- • AISI 304 stainless steel, Scotch Brite finish, 1.5 mm worktops
- • Swing door with accessories for holding knives, ladles and bottles
- • Digital control panel with waterproof control knobs
- • Double doors: bottom or side hung
- • Functional side panels with up to 7 containers and holders
- • The modular range: 200-400-600-800-1200
- • Simple, functional coupling system
- • Also available in a plinth-mounted version
- • Wide range of accessories

### TECHNICAL DATA

- 2-BURNER GAS RANGE ON OPEN CUPBOARD
- Outer casing and feet in stainless steel.
- Adjustable worktop height, ranging from 840 to 900 mm.
- Shaped cooker control panel with knobs slanted towards the operator.
- Nickel-plated top burners with stable flame. Thermocouple safety valve with pilot light.
- Acid-resistant black enamelled cast iron burner grates with long spokes suitable for supporting small pots and pans.
- Stainless steel drip bowls.

## 2-BURNER GAS RANGE ON OPEN CUPBOARD



we innovate cooking

CODE  
CR0993549

MODEL  
D72/10CG

SERIE  
DIAMANTE70

### TECHNICAL INFORMATION

SPECIFICATIONS	DATA
CODE	CR0993549
DEFINITION	D72/10 CG 2 FUOCHI VANO GIORNO
MODEL	D72/10 CG
SUPPLY	GAS
WIDTH	400 MM
DEPTH	730 MM
HEIGHT	870 MM
NET WEIGHT	50,800
VOLUME	0,254 M3
PACKAGING LENGTH	460,000
PACKAGING WIDTH	850,000
PACKAGING HEIGHT	1150,000
PACKAGING VOLUME	0,450
PACKAGING GROSS WEIGHT	60,000
GAS TYPE	GPL 28-30/37 mbar
GAS POWER (G30/30 MBAR)	9,10 KW
GAS POWER (G25/25 MBAR)	8,20 KW
CERTIFIED MODEL	D72/10 CG
CERTIFICATION NUMBER	CE-0085BU0310
POT GAS TOT / POT FRIGO2	9,10
CERTIFICATION	0085BU0310
CERTIFICATION BODY	0085
TYPE	A GIORNO
NUMBER OF MODULES	1/2 MODULO

## 2-BURNER GAS RANGE ON OPEN CUPBOARD



we innovate cooking

CODE  
CR0993549

MODEL  
D72/10CG

SERIE  
DIAMANTE70

### ACCESSOIRES

CODE	MODEL	DESCRIPTION
SUPBRUC	SUPBRUC	10 KW BURNER EXTRA
MA97365000	XBV-GGN1/1	GRID GN 1/1
MA97375000	XBF-GGN2/1	GRID GN 2/1
MA97377000	XBF9M-G	GRID FOR MAXI OVEN
MA97376900	XBF-TGN2/1	TRAY 2/1
MA97378000	XBF9M-T	TRAY FOR MAXI OVEN
CR1353839	CR1353839	1-BURNER SMOOTH CAST-IRON PLATE
CR1353849	CR1353849	1-BURNER SMOOTH CAST-IRON PLATE
CR0996979	DBVP4	DOOR M40
CR0997009	DBVPA4	ACCESSORIBILE DOOR M40
CR0997029	DAPC	KNIFE HOLDER
CR0997019	DAPD	DOSATOR HOLDER
CR0997039	DAPS	SPICE RACK
CR0997049	DAPM	LADLE HOLDER
CR0997059	DAPDB	DISPENCER HOLDER
CR1353589	DBVC4	DRAWERS KIT
CR0599709	72/10BH	NEUTRAL BASES WITH HYGIENIC FINISHING, TYPE H2
CR1353559	DRG11	GRILL HOLDERS GN 1/1
CR1200099	7FC40	BOTTOM WARM FOR UNITS
CR0592779	NXZF4	FRONTAL PLINTH
CR0592830	NX9ZG	PLINTH JUNCTION
CR0599649	7ZL	SIDE PLINTH NX7ZL
MA97432000	NXR	CASTORS KIT
MA97433000	NXRI	CASTORS KIT
CR0592940	NX9CAT	WATER TAP
CR0599859	7CAM	WATER TAP
CR0592869	CR0592869	KIT 4 FEET FOR CONCRETE PLINTH INSTALLATION
CR0593580	NX9PT	KIT 4 FEET FOR TOP VERSION
CR0592879	CR0592879	KIT ANTI-TIPPING FEET
CR0592399	NXTVT1	CLOSING PANEL FOR TECHNICAL SPACE
CR0592409	NXTVT2	CLOSING PANEL FOR TECHNICAL SPACE
PTD7DX	PTD7DX	END SIDE RIGHT ELEMENT
PTD7SX	PTD7SX	END SIDE LEFT ELEMENT

## 2-BURNER GAS RANGE ON OPEN CUPBOARD

CODE  
CR0993549

MODEL  
D72/10CG

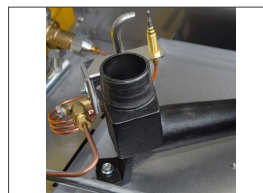
SERIE  
DIAMANTE70



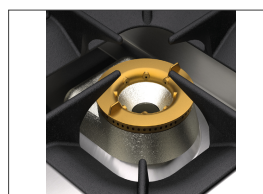
*we*innovate cooking

*we* cook with  
**Diamante**

# Product's PLUS



Right-angle Venturi burner that prevents the nozzle from clogging and collecting dirt.



Nickel-plated cast-iron stabilised flame burners with two-piece flame spreader (improved efficiency of a flame spread over two different sectors), pan rest with long arms for easy placing of small pots and pans.



Removable AISI 304 stainless-steel basin for maximum hygiene.



Thanks to the water jet ingress protection rating, awarded after passing specific tests, knobs and knob bezels can be washed at the end of the working day without affecting performance or safety.

**Olis Ali Group S.r.l.**

Via Del Boscon, 424 - 32100 Belluno - Italy

W: [olis.it](http://olis.it) M: [info@olis.it](mailto:info@olis.it)

T: +39 0437 8558

F: +39 0437 838 274



# 2-BURNER GAS RANGE ON OPEN CUPBOARD



we innovate cooking

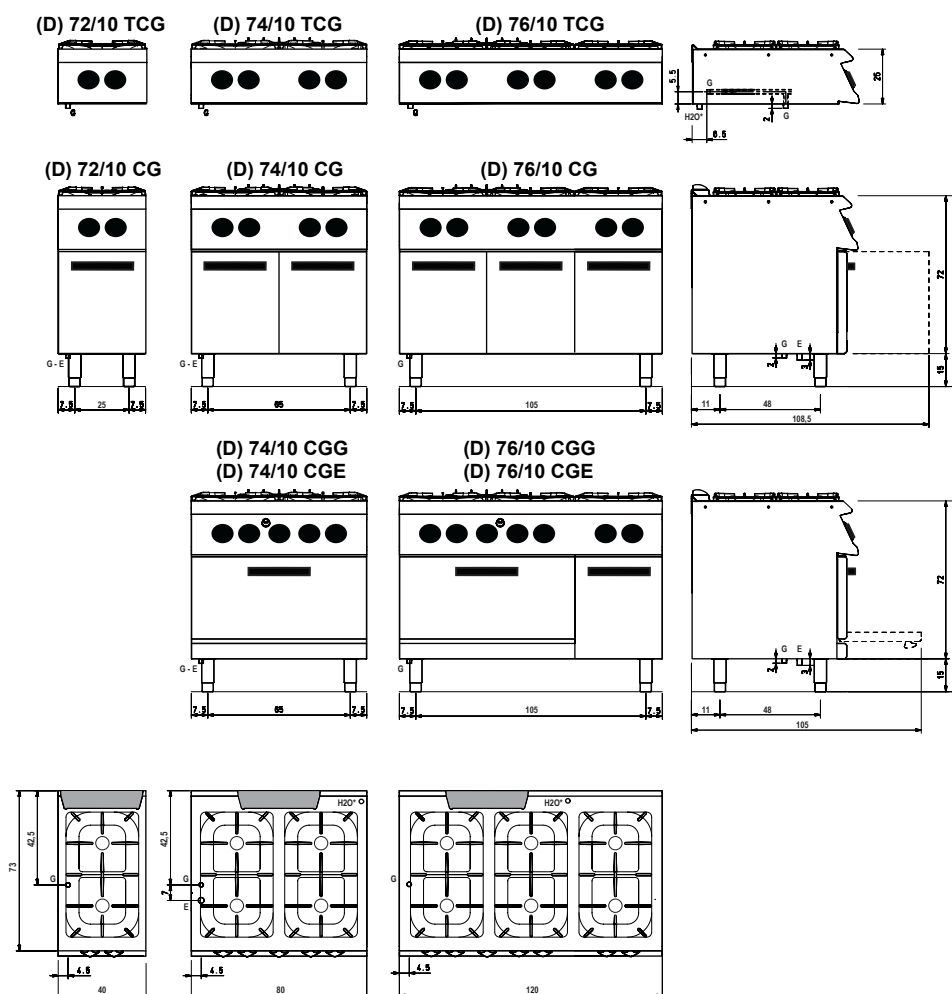
CODE  
CR0993549

MODEL  
D72/10CG

SERIE  
DIAMANTE70

## SCHEMA DI INSTALLAZIONE - INSTALLATION DIAGRAM - INSTALLATIONSPLAN - SCHÉMA D'INSTALLATION - ESQUEMA DE INSTALACION -INSTALLATIESCHEMA - IINSTALLATIONSRITNINGAR

MISURE IN cm - DIMENSIONS IN cm - ABMESSUNGEN IN cm  
MESURES EN cm - MEDIDAS EN cm - MATEN IN cm



Legenda - Legende - Key - Légende - Leyenda - Legenda

- E** Pressacavo entrata linea elettrica - Stopfbuchse  
Electric cable stress relief - Presse étoupe de câble él  
Pisacable - Elektrische kabelwartel
- G** Attacco arrivo gas - Gasanschluss - Gas connection  
Arrivée gaz - Union de gas - Gasaansluiting  
**EN 10226-1 R 1/2; EN ISO 228-1 G 1/2 (DK)**
- H2O\*** Attacco arrivo acqua - Wasseranschluss - Water inlet  
Arrivée eau - Union de agua - Wateraansluiting  
**EN ISO 228-1 G 3/4**