

PRODUCT INFORMATION

AGILA STAINLESS

 40 - 100 kg

 69 - 188 mm

 50 - 150 mm



TENTE

BETTER MOBILITY. BETTER LIFE.

HOUSINGS

PAGES: 4-7



WHEELS

PAGES: 8-13



FITTINGS

PAGES: 14-17



BETTER MOBILITY IN PREMIUM QUALITY

TENTE believes in smart mobility solutions which noticeably improve people's lives and their work environment. TENTE solutions increase productivity, ensure safety and open up new horizons in matters of design and durability as well as environmental friendliness. Leading manufacturers and companies of different industries rely on these competencies as well as our high production quality.

On the following pages you will find technical information about our Agila stainless product family. We will also demonstrate the added value this mobility solution offers to your organisation. Features include:

Permanent washability

All metal components made of stainless steel.

Compliant version

For use in commercial kitchens (DIN 18867 Part 8).

Certified conductivity

Conductive version to protect users and electrical devices from electrostatic discharge.

HOUSINGS



FEATURES



Secured stand

Total lock for swivel housing and locking the wheel simultaneously.



Compliant version

For use in commercial kitchens (DIN 18867 Part 8).



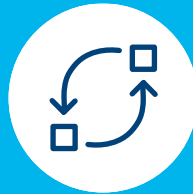
Permanent washability

Versions with metal components made of stainless steel.



Painted surface

Black housing with bump and scratch resistant cathode immersion paint.



Resource-conserving part replacement

Threaded axles allow for effortless wheel change.

HOUSINGS

The housings are made of stainless steel. The wheel axle with nut makes it possible for an easy exchange of the wheel, resulting in reduced maintenance costs.



• **Swivel castor**
Swivel housing for easy manoeuvrability in all directions.



• **Wheel brake**
The manually operated pedal lock prevents unintended movement.



• **Total lock**
The total lock simultaneously locks the wheel and swivel housing for a secure standing.



• **Fixed castor**
Wheel and housing are fixed for standard functionality. The castor is continuously aligned in the direction of travel.

Technical data and availability

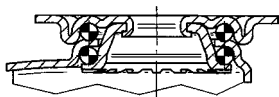


					
		Swivel castor	Swivel castor with wheel brake	Swivel castor with total lock	Fixed castor
Description	Housing type	Swivel castor	Swivel castor with wheel brake	Swivel castor with total lock	Fixed castor
	Article description	7470	7475	7477	7478
	Material	Stainless steel	Stainless steel	Stainless steel	Stainless steel
	Swivel bearing	Double ball bearing swivel head	Double ball bearing swivel head	Double ball bearing swivel head	-
	Washable*	●	●	●	●
Swivel interference	Wheel Ø 50 mm	-	98 mm	-	-
	Wheel Ø 75 mm	123 mm	-	162 mm	-
	Wheel Ø 100 mm	176 mm	-	262 mm	●
	Wheel Ø 125 mm	207 mm	-	262 mm	●
	Wheel Ø 150 mm	240 mm	-	262 mm	●

Items with this sign "-" are not available in our standard range. Please contact us.

* Washable versions with metal components made of stainless steel.

Swivel bearings



Two ball races for best manoeuvrability.



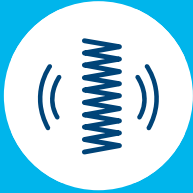
Optimised manoeuvrability

The Agila is also available as a single wheel castor made of pressed steel and also as a twin wheel castor with high manoeuvrability due to differential effect. Please contact us for more information.

WHEELS

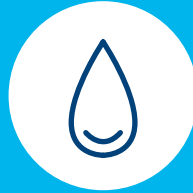


FEATURES



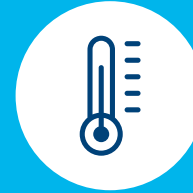
Low-vibration transport

Extra soft wheels with good shock-absorbing properties.



Sterile cleaning

Wheels for steam sterilisation in autoclaves used in sterile areas.



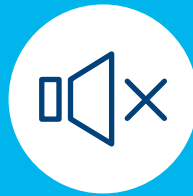
Constant heat resistance

Duratech wheels made of heat resistant material for use in extreme environments.



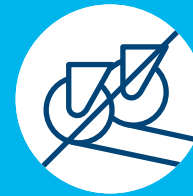
Protective seal

Wheels with sealed bearings to protect against water spray and dirt.



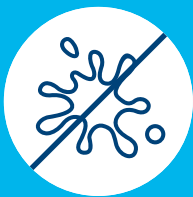
Quiet rolling

Soft wheel types for a quiet working environment.



Non-marking movement

Wheels with reduced abrasion and minimal cleaning effort.



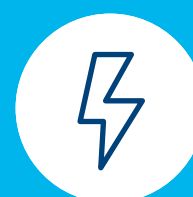
Non-staining operation

Non-staining on contact with floors when left standing for long periods.



Low-maintenance wheels

Thread guards for unobstructed operation and minimal cleaning effort.



Certified conductivity

Conductive version to protect users and electrical devices from electrostatic discharge.

WHEELS

The characteristics of our wheel range are as diverse as their uses. Precisely adapted to the required parameters, they provide optimal manoeuvrability with perfectly matched components, even under the most extreme conditions. You'll discover a wide range of wheels in our Agila product range. Here are the four wheel types.



Puretech

Robust wheel with rubber tread for versatile use. Protection through low-vibration transport.



Supratech

All-around smooth-running wheel with thermoplastic rubber tread. Excellent performance in manoeuvrability and mobility due to the use of high-performance material. A washable version is also available.



Maxtech

Perfect for a functional design, injection-moulded polyurethane. Optimal material properties for any purpose. An electric conductive and washable version is also available.



Duratech

Stable and indestructible, made of polyamide and thermosetting plastic with an abrasion-resistant tread.



Wide range

Browse the full wheel range on the following pages.

Technical data and availability

WASHABLE

	Puretech	Supratech	Supratech	Supratech stainless	
Description	Product name	PIO	PJO	PJH	PJC
	Article description	PIO	PJO	PJH	PJC
	Tread material	Solid rubber, grey non-marking	Thermoplastic rubber, grey non-marking	Thermoplastic rubber, grey non-marking	Thermoplastic rubber, grey non-marking
	Tread hardness	Shore A 80	Shore A 87	Shore A 85	Shore A 85
	Wheel body material	Polypropylene	Polypropylene	Polypropylene	Polypropylene
	Thread guard	-	-	● Pressed steel	● Polypropylene
	Temperature range	-20 °C / +60 °C	-20 °C / +60 °C	-20 °C / +60 °C	-20 °C / +60 °C
	Width of tread / wheel diameter	- 25 / Ø 75 32 / Ø 100 - 150	19 / Ø 50 25 / Ø 75 32 / Ø 100 - 150	19 / Ø 50 25 / Ø 75 32 / Ø 100 - 150	- 25 / Ø 75 32 / Ø 100 - 150
	Electric conductive (10⁴ OHM)	-	-	-	-
	Washable*	-	-	-	●
Bearing type	Plain bearing	●	●	●	-
	Roller bearing	-	-	-	-
	Cone ball bearing	-	-	-	-
	Precision ball bearing	-	-	-	● Stainless
Load capacity	Wheel Ø 50 mm	-	40 kg	50 kg	-
	Wheel Ø 75 mm	60 kg	75 kg	75 kg	75 kg
	Wheel Ø 100 mm	60 kg	80 kg	80 kg	100 kg
	Wheel Ø 125 mm	80 kg	100 kg	100 kg	100 kg
	Wheel Ø 150 mm	100 kg	100 kg	-	100 kg

Items with this sign "●" are available. Items with this sign "-" are not available in our standard range. Please contact us.

The mentioned load capacity is only valid for the Agila stainless product family. The load capacity of a single wheel without housing could be different.

* Washable versions have a stainless steel precision ball bearing.

WASHABLE
& ELECTRIC
CONDUCTIVE

Supratech conductive	Maxtech stainless	Duratech
YGO	XSC	UOO
Thermoplastic rubber, grey non-marking	Polyurethane	Polyamide
Shore A 87	Shore D 40	Shore D 75
Polypropylene	Polyamide	Polyamide
-	● Polypropylene	-
-20 °C / +60 °C	-40 °C / +80 °C	-40 °C / +80 °C
19 / Ø 50 25 / Ø 75 32 / Ø 100 - 150	- - 32 / Ø 100 - 150	20 / Ø 50 - -
●	●	-
-	●	-
●	-	●
-	-	-
-	-	-
-	● Stainless	-
50 kg	-	50 kg
75 kg	-	-
80 kg	100 kg	-
100 kg	100 kg	-
-	100 kg	-

Bearing types



Plain bearing for short distances.



Precision ball bearing for highest performance.



Temperature range

Castors with expander fitting have a lower temperature range of -10 °C / +40 °C.



Load capacity

The load capacity depends on the housing and wheels. Each has been tested and fulfills the requirements according to EN 12528 and EN 12530 at a speed of 4 km/h. When using four castors, you can calculate the necessary load capacity as follows: The sum of the weight of your application plus the additional load divided by three castors.

$$\frac{\text{Weight of application} + \text{load}}{3} = \text{Load capacity of one castor}$$

FITTINGS



FEATURES



Variable fitting options

Different fitting dimensions for a large range of applications.



Fast assembly

Faster assembly process through the use of plug-in fittings.

ADDITIONAL FEATURES



Tested quality

Tested in our own laboratory for compliance with European standards.



Colour matching

Colours can be adapted to match the product design.



Non hazardous materials

Complies with the RoHS directive and REACH regulation of the European Union. Does not contain polycyclic aromatic hydrocarbons or chromium (VI).

PLATE FITTINGS

The fitting of a castor is dependent on the application it's being attached to. With plate fittings, the castors can be screwed under the device with four screws. This ensures a simple and robust connection.



Fixed plates P50
The longside of plate is 90° in the direction of travel.

Technical data and availability

					
Description	Fitting type	Swivel plate	Swivel plate	Fixed plate	Swivel plate
	Article description	P40	P50	P50	P51
	Size of plate	60 x 60 mm	77 x 67 mm	77 x 67 mm	95 x 70 mm
	Plate hole centres in mm	48/38 x 48/38	61,5/56 x 51,5/46,5	61,5/56 x 51,5/46,5	75 x 50
	Plate hole Ø	6,3 mm	8,5 mm	8,5 mm	11 mm
Overall height	Wheel Ø 50 mm	69 mm	-	-	-
	Wheel Ø 75 mm	100 mm	-	-	-
	Wheel Ø 100 mm	-	135 mm	135 mm	135 mm
	Wheel Ø 125 mm	-	160 mm	160 mm	160 mm
	Wheel Ø 150 mm	-	183 mm	183 mm	183 mm

Items with this sign "-" are not available in our standard range. Please contact us.






BOLT HOLE FITTINGS

A bolt hole offers the option to fix the application to the castor with a standard screw M10 or M12. Screws of any length can be used.

Bolt hole 
For screws of any length.



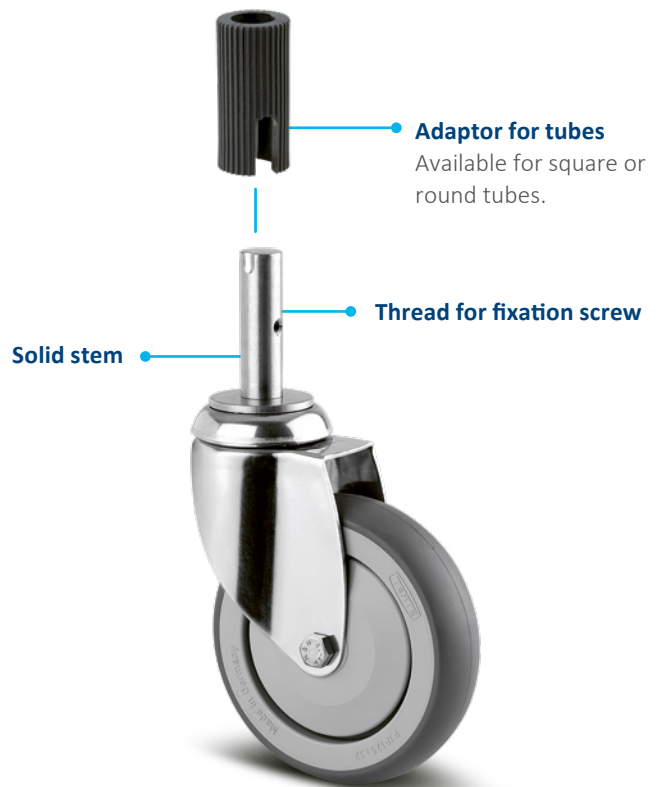
Technical data and availability

				
Description 	Fitting type	Bolt hole	Bolt hole	Bolt hole
	Article description	P30-11	P30-12,3	P30-13
	Bolt hole Ø	11 mm	12,3 mm	13 mm
Overall height 	Wheel Ø 50 mm	-	69 mm	-
	Wheel Ø 75 mm	100 mm	100 mm	-
	Wheel Ø 100 mm	135 mm	-	135 mm
	Wheel Ø 125 mm	160 mm	-	160 mm
	Wheel Ø 150 mm	183 mm	-	183 mm

Items with this sign "-" are not available in our standard range. Please contact us.

SOLID STEM FITTINGS

For easy mounting into tubes, we offer solid stem fittings with suitable adaptors. All fittings are made with high quality bright zinc plating and blue passivated or stainless steel to ensure long-lasting use.



Technical data and availability

Description	Fitting type	Solid stem
	Article description	R05-18
	Thread for fixation screw	M6
	Thread position from bottom	30 mm
	Solid stem \varnothing	18 mm
	Solid stem length	62 mm
Overall height	Wheel \varnothing 50 mm	-
	Wheel \varnothing 75 mm	-
	Wheel \varnothing 100 mm	138 mm
	Wheel \varnothing 125 mm	163 mm
	Wheel \varnothing 150 mm	186 mm

Description	Tube type	Round	Square
	Article description	R08	R48
	Compatible with	R05	R05
	Adaptor measurements	\varnothing 22 mm \varnothing 22,5 mm \varnothing 30 mm	22,5 x 22,5 mm 27,5 x 27,5 mm
	Solid stem \varnothing	18 mm	18 mm
	Solid stem length	62 mm	62 mm

Items with this sign "-" are not available in our standard range. Please contact us.

EXPANDING FITTINGS

For an easy mounting into tubes, we offer for bolt hole fittings suitable expanding fittings. The adjustable expanders allow for flexible installation in different tube sizes.



Technical data and availability

				
Description 	Fitting type	Bolt hole	Expander, round	Expander, square
	Article description	P30-11	R07	R47
	Bolt hole \varnothing	11 mm	-	-
	Compatible with	R07 and R47	P30-11	P30-11
	Expander measurements	-	\varnothing 19 - 21,5 mm \varnothing 21,5 - 24 mm \varnothing 24 - 27 mm \varnothing 27 - 30 mm \varnothing 31 - 35 mm	\varnothing 21,5 - 24 mm \varnothing 24 - 27 mm \varnothing 27 - 30 mm \varnothing 32 - 35 mm \varnothing 36 - 40 mm
Overall height 	Wheel \varnothing 50 mm	69 mm	-	-
	Wheel \varnothing 75 mm	100 mm	103 mm	103 mm
	Wheel \varnothing 100 mm	135 mm	138 mm	138 mm
	Wheel \varnothing 125 mm	160 mm	163 mm	163 mm
	Wheel \varnothing 150 mm	185 mm	188 mm	188 mm



Expander fittings

Our expanders and castors can be delivered separately or completely assembled. Castors with an expander fitting have a lower temperature range of -10 °C / +40 °C.

Items with this sign "i" are not available in our standard range. Please contact us.

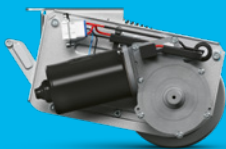
DIVERSITY WITH A SYSTEM

OUR CASTORS

All of our products have their own specific qualities and strengths. Whether it's high design standards, specialist applications or exceptional load capacities – our range can meet your needs and can be adapted to fit different models.

From the correct dimensions and technical specifications to the required configuration, our product families are able to offer the ideal solution – whatever you need. Contact us for more information or visit our website: www.tente.com

E-Drive



⌀ 125 mm

Alpha



⊃ 70 - 500 kg
⌀ 80 - 200 mm

Delta



⊃ 300 - 600 kg
⌀ 125 - 200 mm

Delta twin



⊃ 600 - 750 kg
⌀ 125 - 200 mm

Zeta



⊃ 300 - 800 kg
⌀ 125 - 250 mm

Kappa



⊃ 300 - 2.000 kg
⌀ 80 - 300 mm

Kappa flex



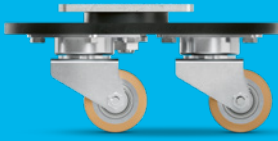
⊃ 360 - 750 kg
⌀ 160 - 200 mm

Omikron



⊃ 900 - 11.000 kg
⌀ 100 - 500 mm

Radiata



1.200 - 1.500 kg
80 mm

Scout



150 - 350 kg
160 - 200 mm

Integral



100 - 150 kg
100 - 200 mm

Integral twin



125 - 250 kg
100 - 150 mm

Linea clinic



150 - 200 kg
125 - 150 mm

Aviana care



100 kg
75 mm

Aviana



75 mm

Agila



40 - 100 kg
50 - 150 mm

Agila twin



50 - 100 kg
50 - 75 mm

Stora



60 - 160 kg
75 - 160 mm

Mono



30 - 70 kg
50 - 100 mm

Galea



60 - 100 kg
100 - 125 mm

Levina



60 - 100 kg
75 - 150 mm

Linea



40 - 150 kg
50 - 150 mm

Anika



40 - 50 kg
55 - 75 mm

Lumina



30 - 100 kg
35 - 75 mm

Stylea



40 - 100 kg
35 - 100 mm

Smiles



40 kg
50 mm

Compacta



10 - 55 kg
14 - 50 mm

EXPERTISE THAT INSPIRES

CONTACT US

We are a globally operating company supporting you on five continents. This means on-site support with service on a level playing field – along with in-depth knowledge. Additionally, our solution experts will advise you on the best mobility concept for your needs. Go here to find your nearest TENTE location: www.tente.com/locations

INCREASE YOUR EFFICIENCY

Our intelligent mobility solutions help you save time, effort, energy, and operating expenses. This allows you to improve your operating methods and working conditions, thereby optimising your processes and ensuring higher productivity, profitability and safety. Ask for our solutions catalogue or read about how our customers benefit from our tailor-made solutions on our website: www.tente.com/solutions

SAVE DEVELOPMENT TIME

On our website you will find technical drawings, product data sheets and 2D and 3D CAD files in various formats: www.tente.com/agila

GET MORE INFORMATION

In addition to our informative website, you can easily download various catalogues and brochures on mobility solutions, customer references, and much more: www.tente.com/download



ER LIFE.

ET



www.tente.com



PRODUCTIVITY



SAFETY



DESIGN



DURABILITY



ENVIRONMENT