



SCHECHTEL

Motor Bending Machine

MODEL

MAXI





MAXI WITH SEGMENTED TOOLING

The idea of combination

Our model MAXI is the combination of segmented tooling, bending power and state-of-the-art CNC control technics for an advanced bending system. Get yourself some space... Upward, downward, in every technically possible direction with our segmented tool system

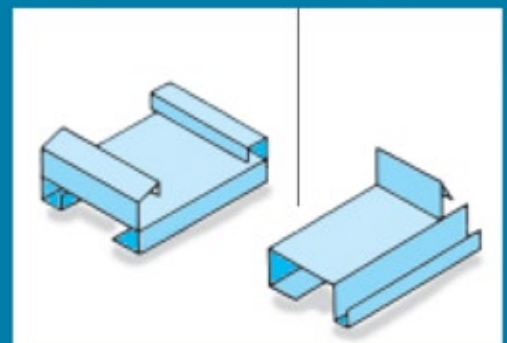
Segmented Tooling with quick clamping system

The fastest and easiest way to bend boxes and pans. Our segmented tools with quick clamping system give you the possibility to change, combine and remove segments without any additional tools. Your advantage- time saving and easy handling.



Close Downs all around...

To close work pieces at all four sides-no problem with model MAXI. Most precisely with perfect bending edges.



ACCESSORIES

Motor Back Gauge

Enlarged Back Gauge Fingers

Guide strips and enlarged back gauge fingers support work pieces to the bending edge.



Precise positioning and time saving. Within a range from 50 to 1000mm pieces can be positioned precisely and fast with an accuracy of +/- 0,1mm. We can offer you additional back gauges with a length of 1500mm or 2000m.

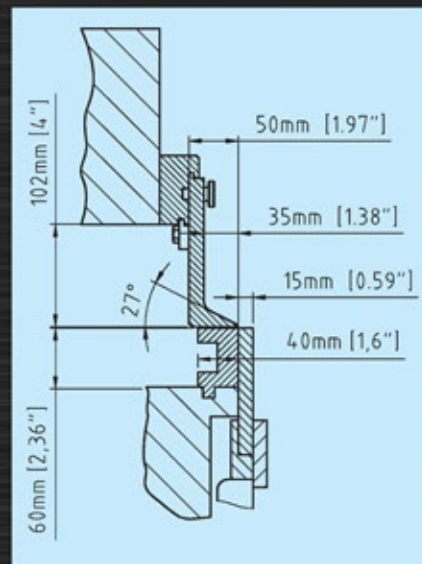
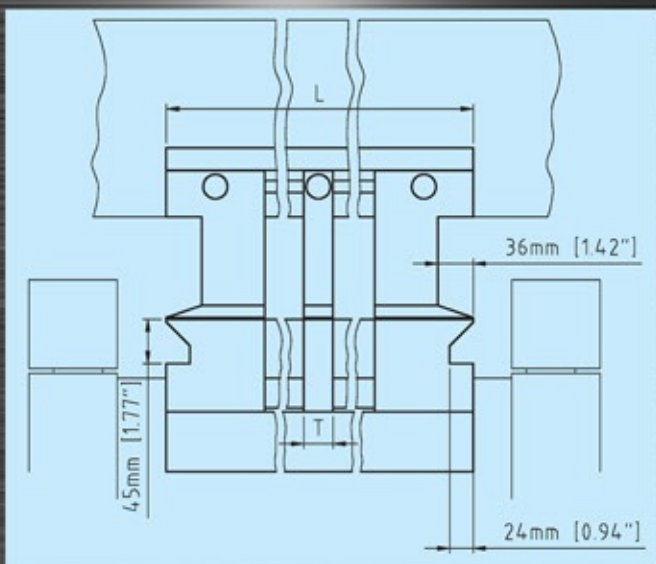


SEGMENTED TOOLING SYSTEM AT UPPER, LOWER AND BENDING BAR (German patent G93.03775.4)

- Standard design with single-step-program for 1 bending angle
- CNC-touch-control with 12" -touch-monitor (option)
- Motor driven back gauge with 1000mm (option)
- Foot switch
- SEW drives
- Bearings and guiding maintenance free

SCHNITTZEICHNUNG DER WERKZEUGSEGMENTE

Detail





TECHINICAL DATA MODEL MAXI

Modell model		MAXI 100	MAXI 150	MAXI 200
Biegelänge working length	mm	1000	1500	2000
Biegeleistung capacity				
Stahl 400N/mm ² Steel 400N/mm ²	mm	2,0	1,5	1,5
Aluminium 250 N/mm ² Aluminium 250 N/mm ²	mm	3,0	2,0	2,00
VA (600 N/mm ²) VA (600 N/mm ²)	mm	1,25	1,00	1,00
Äußere Maße dimensions				
Länge length	mm	1925	2425	2925
Länge (CNC) length (CNC)	mm	1950	2450	3000
Tiefe width	mm	660	660	660
Tiefe (CNC) width (CNC)	mm	1790	1790	1790
Arbeitshöhe working height	mm	845	845	845
Höhe height	mm	1195	1195	1195
Höhe (CNC) height (CNC)	mm	1425	1425	1425
Gewicht weight	kg	1200	1380	1580
Gewicht (CNC) weight (CNC)	kg	1320	1520	1720
Segmentteilung segment selection	mm	Eck 100 links und rechts 30/40/50/60/70/6x100	Eck 100 links und rechts 30/40/50/60/70/11x100	Eck 100 links und rechts 30/40/50/60/70/16x100

alterations reserved

Please also check
our range of hand
operated folders.





Schechtl Maschinenbau GmbH

Postfach 35 D-83531 Edling

P ++49 (0) 8071 / 5995-0

F ++49 (0) 8071 / 5995-99

E info@schechtl.de

W www.schechtl.de

