

# PARTY WALL K-SOUND - FIRE 10mm

FRL 60/60/60 timber frame

FRL 90/90/90 steel frame

FRL 120/120/120 = 2x 10mm K-Clad each side of cold roll formed steel frame (1.0 BMT)

---

NATA Labs Australia Fire Tested Systems AS1530.4 and more

Acoustic System Single Frame Rw50 net Ctr

FRL 60-90 and 120 min. load bearing and non load bearing



FIRE PROOF



FLOOD PROOF



IMPACT RESISTANT



TERMITE PROOF



MOULD & BACTERIA PROOF



## FIXINGS PROCEDURES

### Steel Frame

Use self C/S 30mm to 40mm needle point, wing tip plated corrosion proof screws.

### Timber Frame

Use self C/S 30mm to 40mm needle point ribbed head bugle corrosion proof screws.

Set screws at 200mm intervals on vertical set and 300mm on horizontal via noggins etc. Set screws 15mm in from edges.

Leave 6mm fire sealant gap between vertical set exterior SE10 K-Clad sheets, backed with vertical stud facings. Use min. 45mm width studs for adequate screw fixing spacing. **Use AS1530.4 sealant in all gaps.**

See *FireCrunch Technical Installation Manual* under Manuals & Drawings on web site for full details.

**INTERIOR = TE10**

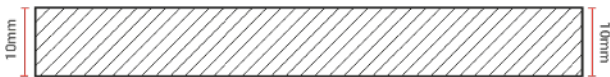
**EXTERIOR = SE10**

**PLAIN SURFACE WALLS, EAVES AND BOUNDARY WALL SYSTEMS**

#### K-Clad SE Square Edge

**Walls - interior/Exterior - Boundary, Fire Separation, Eaves etc.**

**Order Code FCA-SE10-2400x1200 (2700 or 3000)**



Sizes: 2400x1200mm  
2700x1200mm  
3000x1200mm

#### K-Clad TE Recessed Edge

**TE10 Interior Plaster Set**

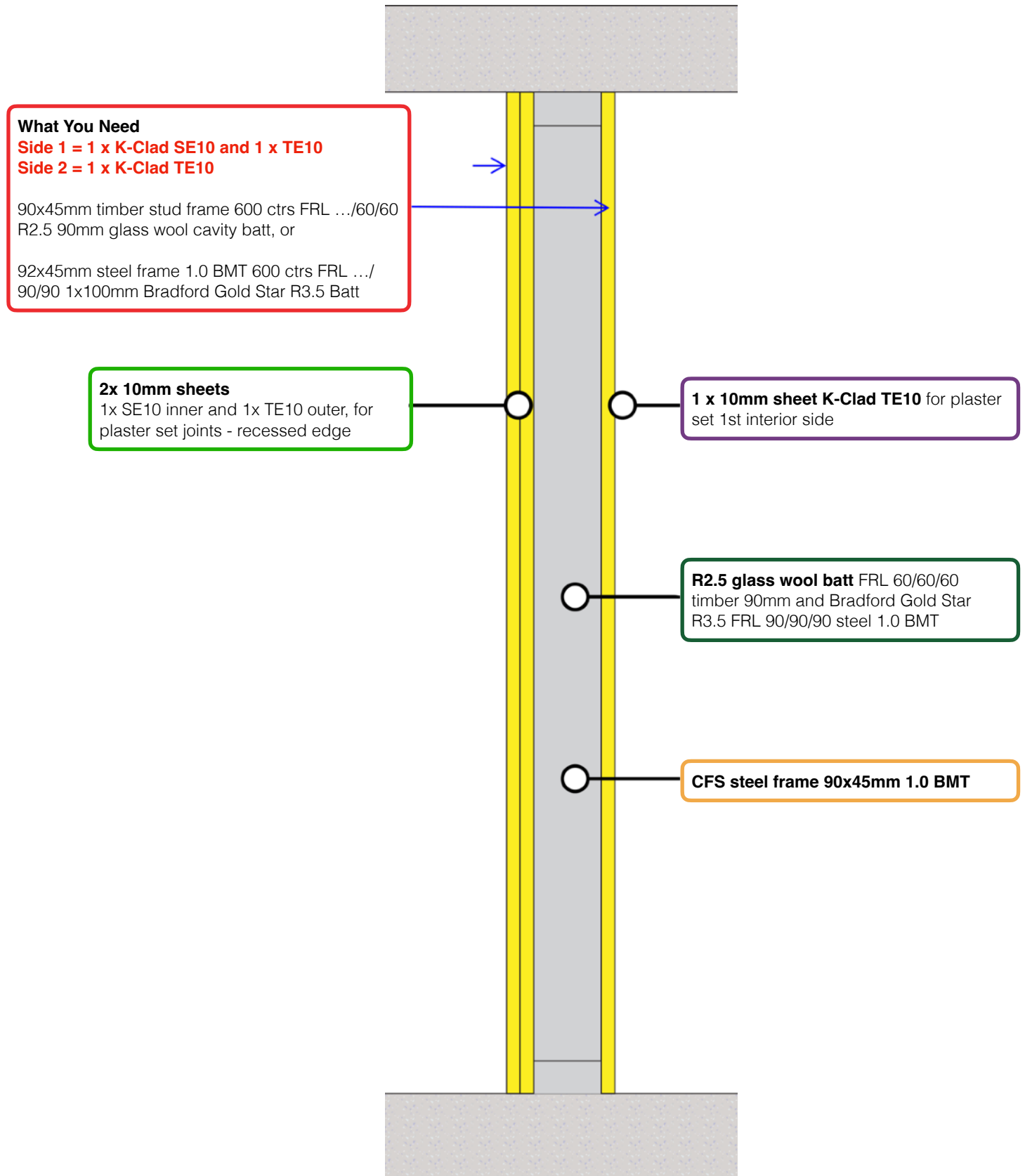
**Order Code FCA-TE10-2400x1200 (2700 or 3000)**

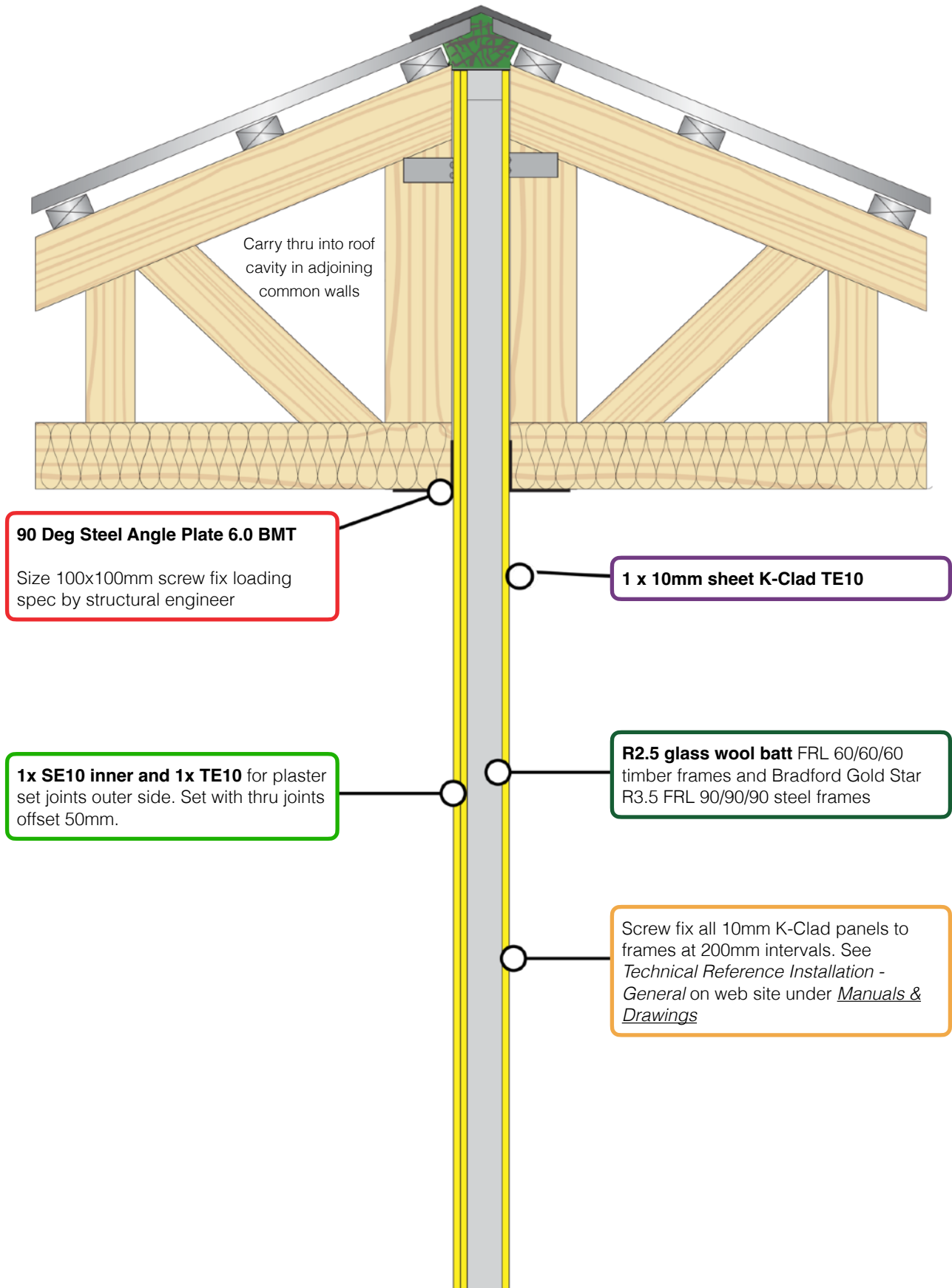


Sizes: 2400x1200mm  
2700x1200mm  
3000x1200mm

# FRL 60/60/60 TIMBER TO FRL 90/90/90 STEEL FRAME

FRL 120/120/120 Add 1 extra 10mm sheet (2 each side) to steel frame 1.0 BMT





## CERTIFICATION AND TEST REPORTS

See [Certifications](#) on web site

### STEEL

- ★ NATA CSIRO FRL 60/60/60 and 90/90/90 assessment of test report. Single steel stud frame 90x45mm 1.0 BMT Bradford Gold Star R3.5 batt AS1530.4 fire sealant.
- ★ NATA Labs Resolute Queensland FRL .../120/120 test report. Single steel stud frame 1.0 BMT 90x45mm R2.5 90mm glass wool batt AS1530.4 fire sealant.

### TIMBER

- ★ NATA Labs Resolute Queensland test report single timber stud frame Radiate pine 90x45mm plus registered FE assessment YGL Fire Engineers, Sydney FRL 60/60/60 AS1530.4 fire sealant - trade counters.