

# Malone Hospital Services

*More than great service*

**PROFESSIONAL SOLUTIONS FOR THERMAL DISINFECTION  
REQUIREMENTS IN HEALTH CARE FACILITIES SPECIALISING  
IN SALES, SERVICE AND PREVENTATIVE MAINTENANCE**

## KEN 731

### Technical Specifications



<http://www.malones.com.au>

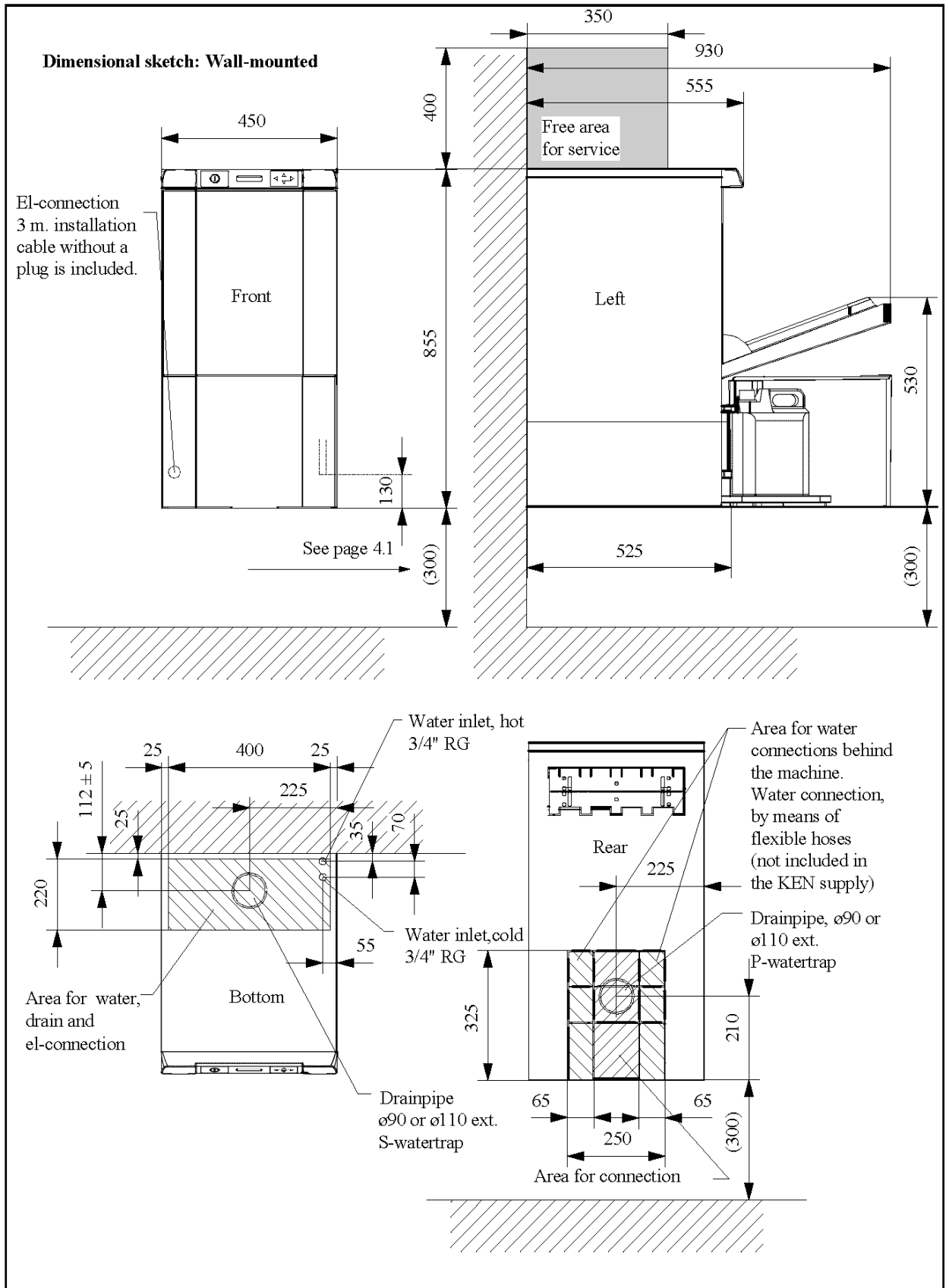


## KEN 731

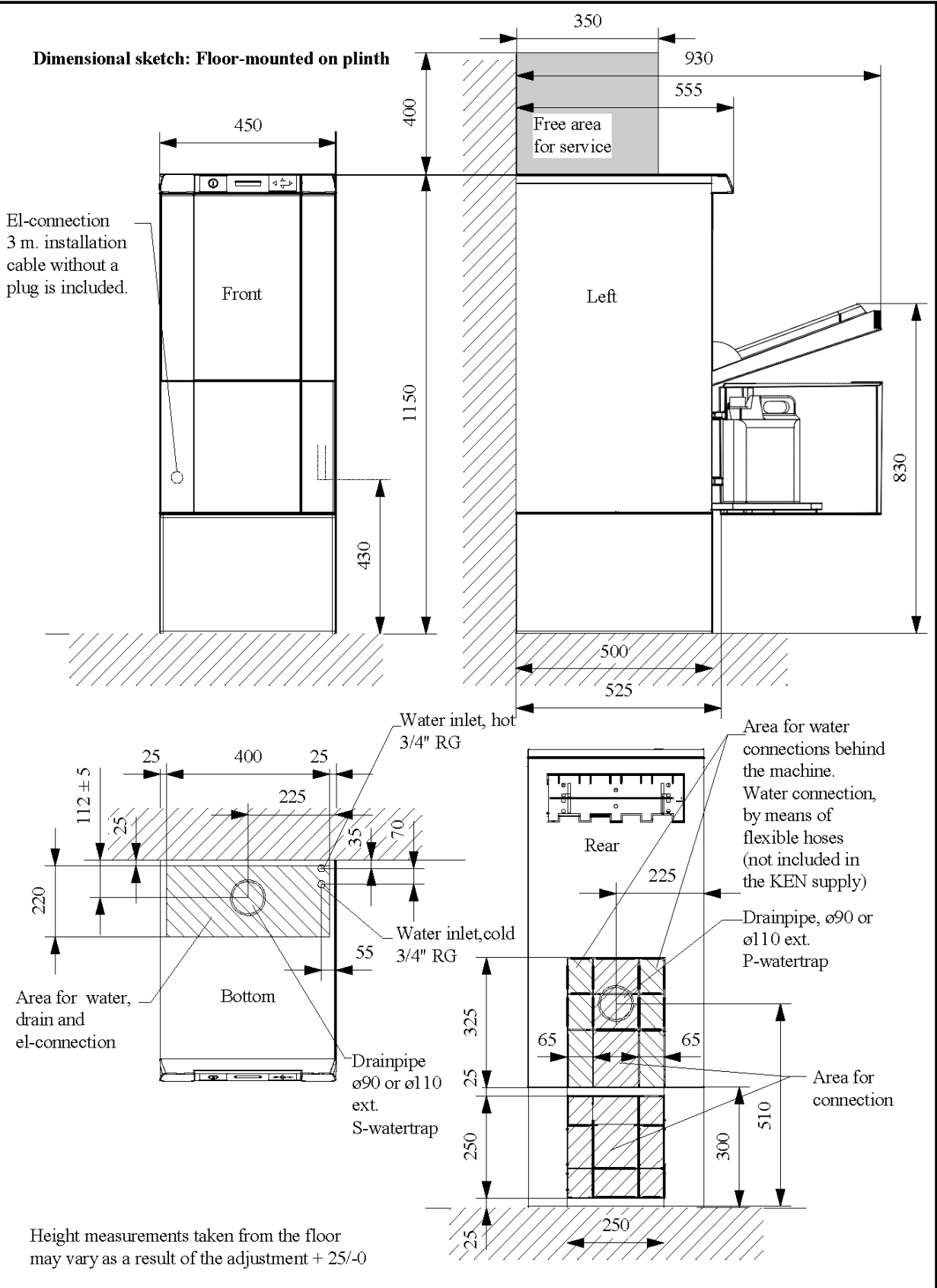
**Possible types:**                      **BWD 731 wall-mounted**  
**BWD 731 floor-mounted on plinth**  
**BWD 731 floor-mounted**

<b>Detergent pump</b> <b>Built in detergent cabinet</b> <b>Urinal nozzle</b> <b>Multi/bedpan holder</b> <b>Net basket (SPRI) with holder</b> <b>Sealing class IP 44</b>	Standard Room for 1 pc. 5 l can 2 pc.. Standard Optional Optional	
<b>Built-in combitank</b>	10 ltr.	
<b>Drain (ø90/ø110 outside)</b>	P- or S-water trap	
<b>Programs/Water consumption:</b> <b>Rinse program</b> /1 wash phase    7 liter <b>Urinal program</b> /2 wash phases 14 liter <b>Bedpan program medium</b> /3 wash phases 21 liter <b>Bedpan program long</b> /5 wash phases 35 liter <b>Wash bowl program</b> /3 wash phases 21 liter	Standard Standard Standard Standard Standard	
<b>Steam condensate (Water consumption appr.1-2.5 ltr.)</b>	Standard	
<b>Elec.consumption per program(bedpan program medium)</b> <b>Steam consumption (bedpan program medium)</b>	0.8 kWh (c.w.10°C) 0.3 kWh (w.w.45°C) 0.6 kg steam (c.w.10°C) 0.25 kg steam (c.w.45°C)	
<b>Pump capacity/-power</b> <b>Heating element in combi tank</b>	298 l/min. 0.75 kW 3x2 kW/3x3kW	
<b>Power consumption/pre-fuse</b>	3x2 kW/10 Amp. 3x3 kW/16 Amp.	
<b>Capacity (alternatively-)</b>  <b>Dimensions wash chamber</b>	1 bedpan 2 urinals 1 wash bowl 1 utensil basket H460xW380xD280	
<b>Program time, bedpan program hot water connection</b>	ca. 7 min.	

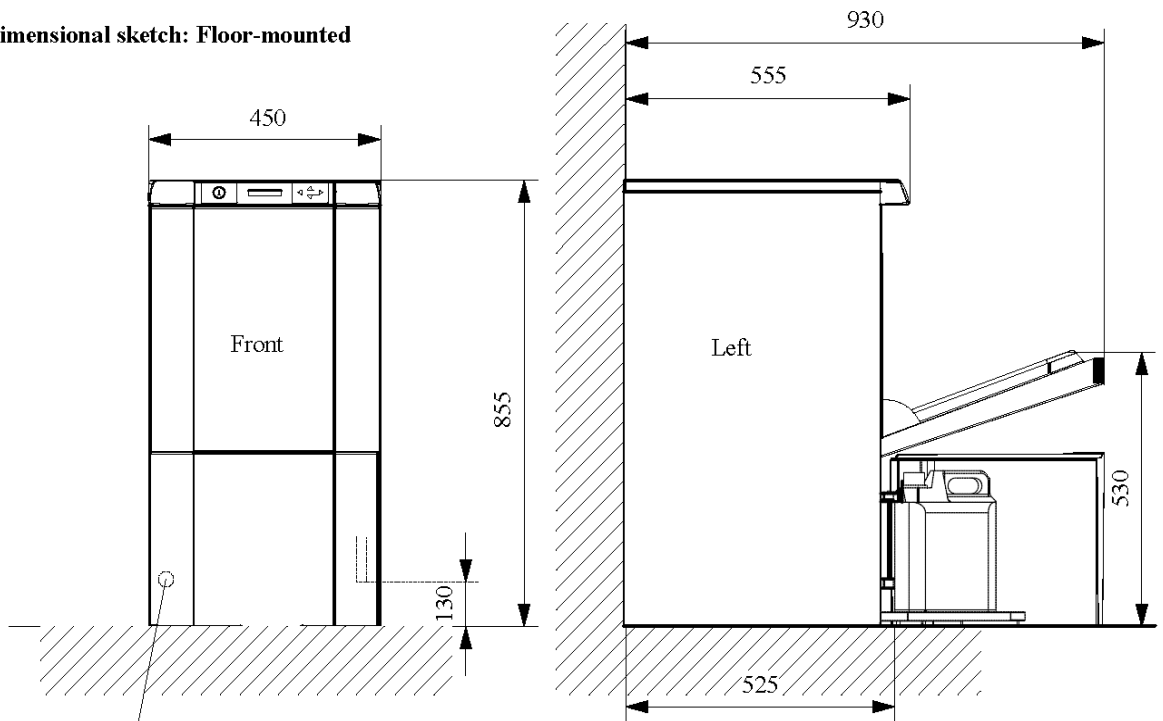
<b>Water connection</b>	Cold: 3/4" RG (poss. 1/2" pipe), press.:200-800kPa,temp.:5-30°C,hardness: 0-3°dH Hot: 3/4" RG (poss. 1/2" pipe), press.:200-800kPa,temp.:5-70°C,hardness: 0-3°dH		
<b>Electricity connection</b> <b>Sound level</b> <b>Heat emission with 1 wash per h.</b> <b>Sealing class</b> <b>Weight</b>	Standard: 3N~ 400V 50 Hz Appr. 62.5 dB(A) Appr. 120 W IP 21 (not rinse-proof) Appr. 64 kg (incl. plinth 69 kg)	<b>Approvals</b>	<b>VA 2.55/-</b> <b>KIWA K 6510/-</b>



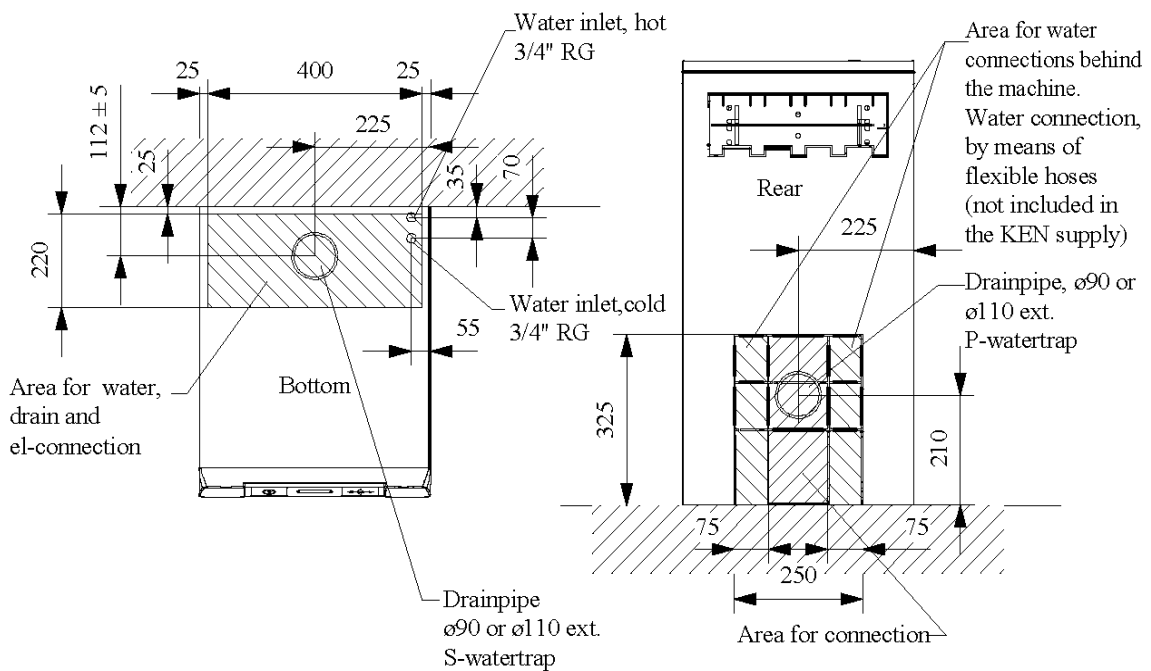
**Dimensional sketch: Floor-mounted on plinth**



**Dimensional sketch: Floor-mounted**



El-connection  
3 m. installation  
cable without a  
plug is included.



Height measurements taken from the floor  
may vary as a result of the adjustment + 25/-0

# Installation Requirements

## **POWER**

3 phase – 16 amps per phase.

Terminated by an isolating switch adjacent to the machine.

## **WATER**

Hot and cold isolating stopcocks to be 3/4" B.S.P. located to the side or above the machine.

## **DRAIN**

Discharge temperature approx 58°C –

Waste pipe 100 mm PVC or copper.

“P” or “S” trap supplied with machine as per technical specifications.

## **Positioning of machine: -**

Clearance on left and right side of machine 250-300mm if possible.

Clearance at rear approximately 75 – 100mm.

## **For more information please contact:-**

### **Head Office**

**24 Tathra St**

**West Gosford NSW 2250**

**Ph: (02) 4323 9731**

**Fax: (02) 4323 9001**

**Email: sales@malones.com.au**

### **Queensland Branch**

**Unit 7/9 Redcliffe Gardens Drive**

**Clontarf QLD 4019**

**Ph: (07) 3283 2566**

**Fax: (07) 3283 2599**

**Email: qld@malones.com.au**