



Safe

Versatile

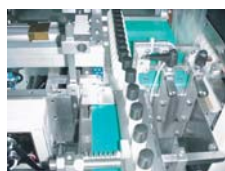
Easy to use

Economical



By far the most popular machine for medium speed automatic collating and packing of cosmetic, pharmaceutical, grocery and chemical products. The machine can also be used for wrapping of pre-collated product on a tray.

*Fully automatic universal system  
with integral horizontal collator*



## Autopack Machine Advantage

- Line Communication
- Easy film loading
- Speeds 12 - 28 ppm
- Tighter wrap with up to 2% film saving
- Adjustable in 5 minutes with use of quick release handles for adjustments and clip in change parts
- Advanced Solid Bar Welding System for strong, attractive welds
- Human Machine Interface (HMI)
- Better shrink-through more efficient air circulation
- Lower tunnel temperature, important for cosmetic, pharmaceutical & chemical products
- Occupy up to 15% less floor space and uses less energy
- Film perforation for easier opening
- Printed film registration device



Autopack designers pay particular attention to specifying materials and finishes that are durable, do not affect the packaged product and remain serviceable for a long time.

Explore shrink wrapping and our range of machines at  
**www.autopack.com**



## Fully Automatic Universal System with Integral Horizontal Collator

### Operation

- After filling, capping and labelling, product containers are then transported into the Autopack wrapping unit, by means of a side mounted conveyor.
- here, a pneumatic pusher collates the containers into a preselected pack formation, which upon completion is transferred forward into the welding position.
- At this stage the pack is clamped, the welding bar descends to complete the wrap, and the pusher returns to prepare the next collation of product.

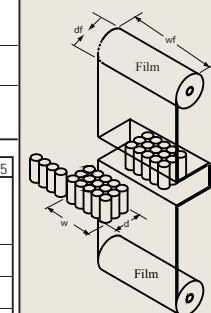
- As the welding bar ascends the pusher advances to transfer the new collation into the welding position, at the same time displacing the previously wrapped collation onto continuously moving shrink tunnel conveyor.
- The wrapped collation soon enters the shrink tunnel chamber where recirculated hot air causes the wrap to shrink, and tightly conform to the contours of the contents.
- Once the pack is out of the hot chamber, forced air cooling is used to tighten the sleeve wrap to achieve a strong, secure pack ready for stacking on a pallet or placing in a shipping carton.

Specifications		45SLHL20	45SLHM25	45SLHM30	60SLHM20	60SLHM30	80SLHH25	80SLHH35
Film	Max roll width	wf	430	430	430	580	580	780
	Max thickness	tf	80	100	100	120	120	120
	Max roll dia	df	320	320	320	320	320	320
Pack Size	max pack width <sup>1)</sup>	wp	330	330	330	480	480	680
	Max pack depth <sup>2)</sup>	dp	220	220	220	300	300	400
	Max pack height	hp	235	235	325	235	325	250
Single product	Diameter min-max <sup>3)</sup>	d	20-75	20-75	20-75	25-100	25-100	25-120
Packing speed	Without collation	Packs/min	15-20	18-28	18-28	18-28	18-28	12-22
	With collation <sup>4)</sup>	Packs/min	10-15	12-18	12-18	12-18	12-15	8-15
Note! For bigger pack size need to use longer tunnel.								
Supplier	380/415V+N+E	A/ph	16	16	18	19	21	32
	Average Power usage	kW	6	6	7	7	8	12
Air Consumption	Air pressure	kPa	500	500	500	600	600	650
	Air usage per pack	NL	11	11	11	14	15	23
	Cubic Feet / Min	cfm	6	6	6	7	8	9

Dimensions		45SLHL20	45SLHM20	45SLHM30	60SLHM20	60SLHM30	80SLHH25	80SLHH35
Total system	Overall Length <sup>5)</sup>	L	2470	2970	2970	2970	4200	4200
	Width	W	650	650	650	800	800	1000
	Infeed Height + 70	Hi	830	830	830	830	830	830
	Outfeed height + 70	Ho	830	830	830	830	830	830
Wrapper	Length <sup>5)</sup>	Lw	970	970	970	970	1400	1400
	Height	Hw	1610	1610	1610	1610	1610	1610
Shrink Tunnel	Length	Lt	1500	2000	2000	2000	2000	2800
	Height	Ht	1510	1510	1610	1510	1610	1640
Infeed Conveyor	Projection	Co	590	815	815	815	815	1075
	Indent	Cl	560	560	560	535	535	525
Outfeed Roller	Length	Lo	500-750	750	750	1500	1500	2250
	Width		330	330	330	480	480	580

Note: All Specifications and Dimensions are same for SLU



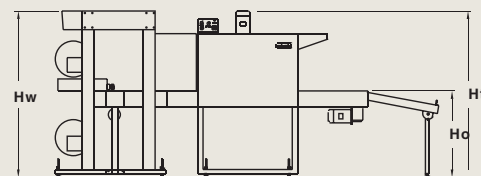
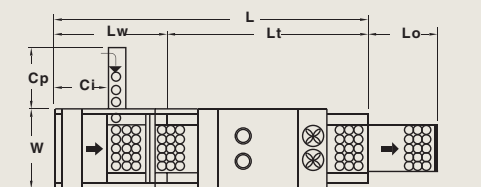
1) Maximum stated pack width can only be achieved if the pack depth and the height are not at their maximum. In general as the pack depth or height goes up, then for a given film size, width of the pack must decrease. If in doubt, contact your local Autopack representative or the distributor.

2) The values specified are to satisfy most applications but if they don't accommodate your product size please contact us as we may be able to vary some machine parameters during the manufacturing process.

3) The parameter "d" refers to the range of adjustment for collating of cylindrical shape products. Rectangular shape products can be collated without table guiding, hence the value of "d" may be easily increased, but not exceeding "dp"

4) The final speed is very much dependent on the method of collating, shape size and nature of the product as well as the size of collation, 150 units/min would be a typical speed for a 330ml cylindrical container with a base dia, of say 50, collated into a 12 pack.

5) Depending on customers product range, different transfer tables maybe used between wrapper and tunnel. This will alter values of L and Lw.



**Manufactured by: AUTOPACK CO., LTD.**  
98/50 Moo11, Phutthamonthon Sai 5 Rd,  
Raikhing, Sampran, Nakornpathom, 73210  
Tel: (66) 2 811- 8340, Fax: (66) 2 811- 8341

**Distributed by:**