



RECTANGULAR SINAQUA™

Drop-in Waterless Buffet Warmer

IHW062-36

638304



PROJECT

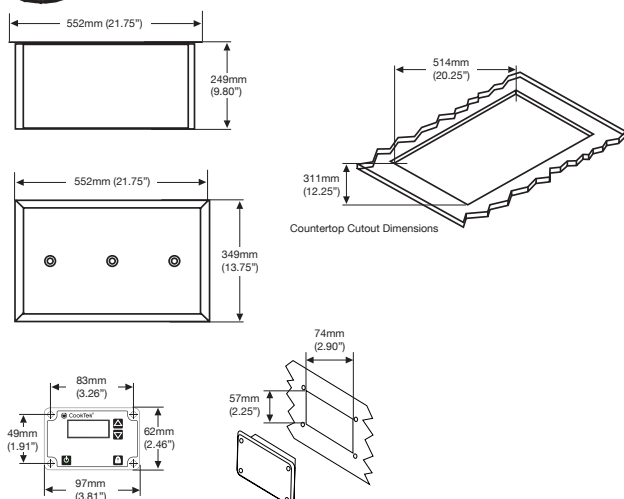
ITEM

QUANTITY

DATE

TECHNICAL DATA:

Dimensions (W x D x H):	349 x 552 x 249
Cutout (W x D):	311 x 514
Total Weight:	7.7Kg
Wall Clearance:	51mm (152mm below)
Model:	IHW062-36
Total Connected Load:	1.95kW
Volts (Single Phase):	220-240 V
Amps	10A



The CookTek® Drop-in SinAqua™ is a waterless buffet warmer featuring an aluminum housing and a high-impact polycarbonate interior surface. The SinAqua™ requires no water lines or drains and has precise temperature holding for each pan to maximize food quality. Each unit is programmed with an automatic pan detection feature to ensure maximum and efficient warming of induction-compatible pans.*

FEATURES:

- Waterless design - no water drains needed
- Drop-in design with aluminum housing and a high-impact, easy-to-clean polycarbonate interior surface
- Three individual induction zones with independent controls using 650 watts per zone
- Four standard set temperatures with more temperatures available via controller
- LED display
- Automatic pan detection allows for instant energy transmission to pan; almost no energy consumption when pan is not present
- Lock feature prevents unwanted setting changes
- Microprocessor monitors vital components to check for overheating, power supply issues, and more

*Induction cooking requires the use of induction-compatible (i.e. magnetic) cookware.

CERTIFICATIONS



Due to continuous product research and development, the information contained herein is subject to change without notice.

Revision: January 14, 2020 1:02 PM

www.stoddart.com.au

www.stoddart.co.nz

