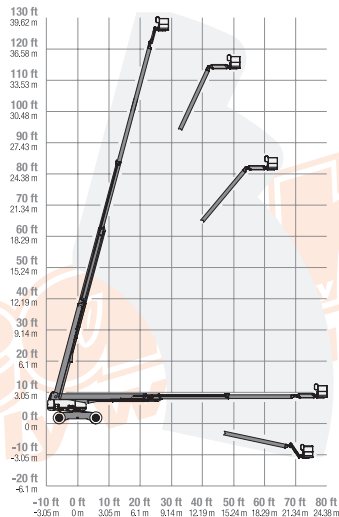




B125JDG - 125' (38.15M)

BOOM LIFT GENIE S125

SPECIFICATION	IMPERIAL	METRIC
Working Height maximum	131ft	40.15m
Platform Height maximum	125ft	38.15m
Horizontal Reach maximum	960"	24.38m
Platform Size	36" x 96"	0.91m x 2.44m
Machine Height	121"	3.07m
Machine Width (axles retracted)	98"	2.49m
Machine Width (axles extended)	132"	3.35m
Machine Length (stowed)	561"	14.25m
Transport Length (stowed)	479"	12.17m
Ground Clearance (stowed)	17"	0.44m
Max. Platform Occupancy	2 PERSONS	
Wind Speed Rating Use	OUT DOOR USE	
Gradeability - stowed	40%	
Total Lift Capacity	500lbs	227kgs
Drive	FOUR WHEEL DRIVE	
Maximum Drive Height		
Tyres	RT LUG - FOAM FILLED	
Machine Weight (approx.)	45722lbs	20739kgs
Power Source	DIESEL ENGINE	
Generator 5KVA or 7kva	FITTED ALL MACHINES THIS MODEL	
Fuel Tank Capacity	40 gallon	151 litre
Operators Licence	11 METRE & ABOVE WP LICENCE	



Attachments available, please contact our office.

Machine specifications are approximates & subject to change by the manufacturer without notice.