

**7000 | 7800 | 9000**

REUSABLE RESPIRATORS



**EASY TO WEAR**



**MOLDEX**



## COMPLIANCE JUST GOT A WHOLE LOT EASIER

Moldex designed the 7000 and 7800 half masks and 9000 full face series to be the most user friendly respirators on the market. These streamlined respirators feature fewer parts, minimal maintenance, and a wider field of vision. They are all ultra-light weight, durable, and economical,

so maximum comfort with extended use is built-in. The award-winning 7000/7800/9000 series add up to simple, comfortable, and economical respiratory protection that's just plain **EASY TO WEAR.**

### 7800 PREMIUM SILICONE HALF MASK

The 7800 Premium Silicone Half Mask has higher resistance to heat and compression, with all the enhanced comfort and durability of silicone.



**IN SILICONE**



*7000, 7800 and 9000 share a full line of cartridges and filters.*

**Full range of gas/vapor cartridges for these common applications and environments:** Foundries, paper, pesticides, wood products, printing, pharmaceuticals, agriculture, tobacco, mining, petrochemical, aluminum processing, textiles, glass, chemical manufacturing, paint, laboratories, utilities, cement, fiberglass, coal, fertilizer, petroleum refining, oil or water-based paints, electroplating, embalming, rendering, adhesives, construction, automotive, food processing, agriculture, mining, transportation industries, ship/boat building, health services, furniture manufacturing, primary and fabricated metal.

## 7000/7800 FEATURES



Wide flange fits more facial shapes comfortably

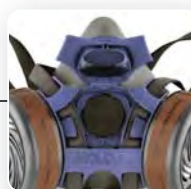


Low profile, angled cartridge placement for wider field of vision

Contoured neck buckles for comfort and quick attachment



Easy mount bayonet cartridge/filter attachment

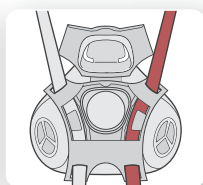


Attached exhalation cover for easy inspection

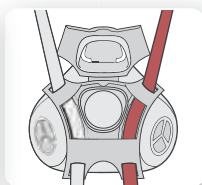
The versatile 7000/7800 has optional drop down/lock down strap modes



7000/7800 in Drop Down Mode



Lock down mode



Drop down mode

**Common applications and environments for 7940 P2/P3 filter and 7990 P2/P3 cartridge:** For contaminants where an OSHA substance specific standard applies (asbestos, lead, cadmium, inorganic arsenic, MDA) requiring a High Efficiency Particulate Air (HEPA) filter as well as pharmaceutical, battery, nuclear, welding, metal processing. Also for use in environments where oil-based particulates are present.



## 9000 FEATURES



Lightest weight facepiece  
of any popular model.



Over-molded buckles for  
secure strap attachment.  
One finger strap release

Stand away head harness  
for easy donning

Lens with scratch resistant  
coating meets AS 1337  
for impact protection.  
Tear away lens protector  
included

Completely free of  
metal parts

Over-molded flange to lens.  
Eliminates heavy metal  
clamping frame for less  
weight and fewer parts

Panoramic lens with peripheral  
vision side panels



Integrated exhale area with attached  
cover. Fewer parts, simple maintenance  
and inspection



Easy mount bayonet  
cartridge/filter attachment








**Common applications and environments for P2 filters:** Welding, grinding, machining, bagging, buffing, cement, metal working, dusty environments, foundry, mining, poultry, sanding, wood, furniture, textiles, waste processing.

*Always refer to instructions before using.*

# MOLDEX

# 7000, 7800 AND 9000 FACEPIECES, CARTRIDGES, FILTERS & ACCESSORIES

## 7000/7800/9000 Gas/Vapour and Filter Cartridges

-  7100A Organic Vapours - A1
-  9100A Organic Vapours - A2
-  7600A Multi-Gas/Vapour Smart® Cartridge - A1B1E1K1
-  9640A Multi-Gas/Vapour Smart®/P3 Combo Cartridge - A2B2E2K2P3▲
-  7990A P2/P3 Particulates - HEPA\*

\*P2 protection when worn with the 7000 half mask.

P3 protection when worn with the 9000 full facepiece.



## 7000/7800/9000 Particulate Filters

- Use 8010A P2 Pre-Filter with the 7020 Pre-Filter Retainer with any Gas/Vapour Cartridge.
- Use the 7940A P2/P3 Filter Disk or 7960A P2/P3 Filter Disk plus Nuisance OV as a stand alone filter or use the 7940A with the 7920A Piggyback Adapter with any Gas/Vapour Cartridge.



8010A P2 Filter



7940A P2/P3 Filter Disk



7960A P2/P3 Filter Disk Plus Nuisance Organic Vapours

## 7000/7800/9000 Replacement Parts

### 7000/7800 Replacement Parts:

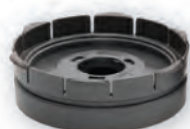
- 0072 Head Harness Assembly
- 0073 Diaphragm Kit
- 0074 Gasket Kit

### 9000 Replacement Parts:

- 0073 Diaphragm Kit
- 0074 Gasket Kit
- 0092 Head Harness
- 0093 Face Shield Protectors
- 0094 Med./Large Nose Cup Assembly
- 0095 Small Nose Cup Assembly
- 0098 Spectacle Kit



7020 Pre-Filter Retainer



7920 Piggyback Adaptor



0098 Spectacle Kit



9780 7000/7800/9000 Reusable Respirator Bag

## 7000/7800/9000 Facepiece



Product Code	Description	Display Quantity	Case Quantity
<b>7000 Half-Mask Facepiece</b>			
7001	7000 Half Mask, Small	1/Bag	12 Bags
7002	7000 Half Mask, Medium	1/Bag	12 Bags
7003	7000 Half Mask, Large	1/Bag	12 Bags
<b>7800 Series Premium Silicone Half Mask Facepiece</b>			
7801	7800 Silicone Half Mask, Small	1/Bag	12 Bags
7802	7800 Silicone Half Mask, Medium	1/Bag	12 Bags
7803	7800 Silicone Half Mask, Large	1/Bag	12 Bags
<b>9000 Full Facepiece</b>			
9001	9000 Full Facepiece, Small	1/Box	2 Boxes
9002	9000 Full Facepiece, Medium	1/Box	2 Boxes
9003	9000 Full Facepiece, Large	1/Box	2 Boxes
<b>Gas/Vapour Cartridges</b>			
7100A	Organic Vapours - A1	1 Pair/Bag	30 Bags
9100A	Organic Vapours - A2	1 Pair/Bag	30 Bags
7600A	Multi-Gas/Vapour Smart® Cartridge A1B1E1K1	1 Pair/Bag	30 Bags
9640A	Multi-Gas/Vapour Smart®/P3 Combo Cartridge - A2B2E2K2P3▲	1 Pair/Bag	10 Bags
7990A	P2/P3 Particulates - HEPA*	1 Pair/Bag	30 Bags
<b>Particulate Filters and Retainers</b>			
* 8010A	P2 Particulate Filter	5 Pair/Bag	10 Bags
7940A	P2/P3 Filter Disk	1 Pair/Bag	30 Bags
7960A	P2/P3 Filter Disk with Nuisance OV	1 Pair/Bag	30 Bags
7020	Pre-Filter Retainer	1 Pair/Bag	50 Bags
7920	Piggyback Adapter	1 Pair/Bag	30 Bags
<b>Accessories and Replacement Parts</b>			
0072	7000 Head Strap Assembly	1/Bag	20 Bags
0073	Diaphragms (7000/7800/9000)	20 Inhale 5 Exhale	1 Kit
0074	Gaskets (7000/7800/9000)	20/Bag	1 Bag
0092	9000 Head Harness	1/Bag	5 Bags
0093	9000 Faceshield Protector	15/Bag	1 Bag
0094	9000 M/L Nose Cup	1/Box	5 Boxes
0095	9000 S Nose Cup	1/Box	5 Boxes
0098	9000 Series Spectacle Kit	1/Box	1 Box
7006	Probed Cartridge Kit (7000/7800/9000)	1/Kit	1 Kit
9780	7000/7800/9000 Reusable Respirator Bag	1/Bag	20 Bags

\*8010A can be used with 7000, 7800, 8000 and 9000 series respirators.

▲9640A for use only with 9000 series full face respirators.



**EASY TO WEAR**



**U.S.A. (CORPORATE OFFICE)**

**MOLDEX-METRIC, INC.**

10111 West Jefferson Boulevard  
Culver City, California 90232

TEL: +1 (800) 421-0668 or +1 (310) 837-6500

FAX: +1 (310) 837-9563

E-mail: [sales@moldex.com](mailto:sales@moldex.com) [www.moldex.com](http://www.moldex.com)



**MOLDEX OFFICES SERVICED IN THE U.S.A.**

**AUSTRALIA**

P.O. Box 4086  
Carlingford North, NSW 2118  
TEL: +61 (02) 9838 7588  
E-mail: [moldexaustralia@moldex.com](mailto:moldexaustralia@moldex.com)

**CANADA**

10111 West Jefferson Boulevard  
Culver City, CA 90232  
TEL: +1 (310) 837-6500 Ext. 517  
FAX: +1 (310) 837-9563  
E-mail: [sales@moldex.com](mailto:sales@moldex.com)



**NEW ZEALAND**

3 Spence Road  
Henderson, Auckland, NZ  
TEL: +64 (9) 837 8247  
FAX: +64 (9) 837 8248  
E-mail: [moldexnz@moldex.com](mailto:moldexnz@moldex.com)

**MEXICO / LATIN AMERICA**

Sierra de Zimapán #4 Int. 36  
Edificio Villas Fontana  
Col. Villas del Sol, Querétaro  
C.P. 76046 México  
TEL: +52 (442) 234-1230  
FAX: +52 (442) 234-1231  
E-mail: [ventasamlat@moldex.com](mailto:ventasamlat@moldex.com)



**MOLDEX JAPAN K.K.**

Level 9, Edobori Center Building  
2-1-1 Edobori, Nishi-ku,  
Osaka 550-0002 Japan  
TEL: +81 (6) 6225-1030  
FAX: +81 (6) 6225-1111  
E-mail: [moldexjapan@moldex.com](mailto:moldexjapan@moldex.com)

**BRAZIL**

Rua tucuma 353 sobreloja  
Jardim Europa  
Sao Paulo, SP 01455-010 Brasil  
TEL/FAX: +55 (11) 2659 2108  
E-mail: [moldexbrazil@moldex.com](mailto:moldexbrazil@moldex.com)