

DESCRIPTION

Heavy Duty Platform Lift TL250 is a hydraulically-driven heavy vehicle platform lift. The unique hydraulic driven system and high-precision balancing control device ensures synchronization of lifting and lowering.

TL250 is typically used in pre-delivery, repair and/or maintenance workshops catering for trucks, buses, trailers, agricultural vehicles and similar.

The Unique Synchronization System ensures smooth lifting and lowering of the hoist even when the two platforms are unevenly loaded.

The lift is equipped with an operator console, as well as E-stop safety switch to meet Australian Standards.

The TL250 series Lift incorporates both Hydraulic and mechanical locking features for optimum safety of operators. The pneumatically released mechanical safety lock is operated from the console with the operator having clear view of the lift and surrounds.

The lift incorporates both front and rear wheel stops once the hoist is raised.

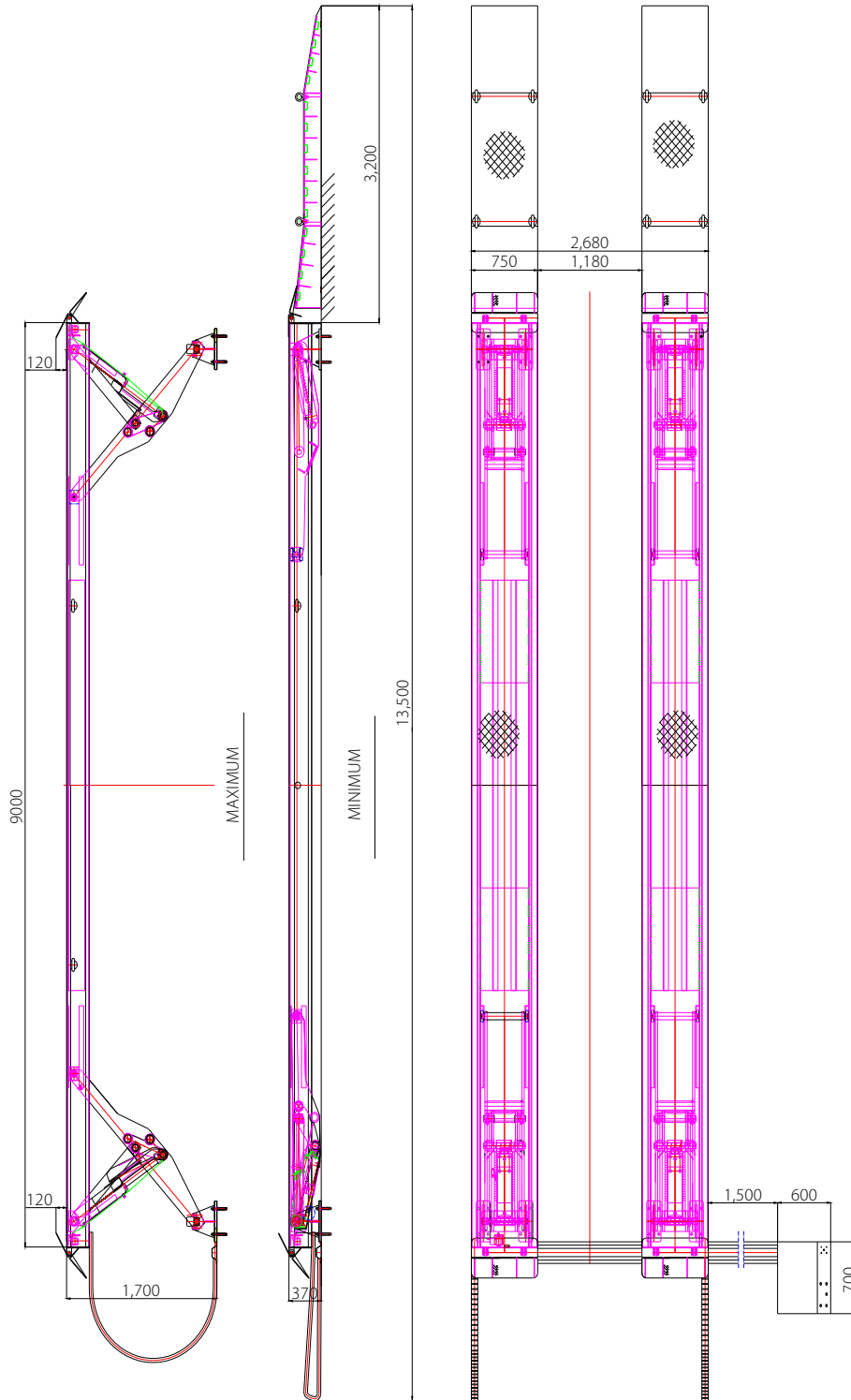
The synchronisation system of the TL250 ensures both platforms remain level and uniform during operation. In the event of a power outage or other external fault the lift will automatically shut off. In this event there is a manual override procedure to lower the hoist to the ground.

Available in 9m and 10m platform lengths.

Tech Specs	TL250
Lifting Capacity	25 t
Max lift height	1,700 mm
Min height	375 mm
Width	2,680 mm
Length	12,800 mm
Single Platform Width	750 mm
Vehicle Wheelbase	6,000 mm - 8,000 mm
Rise time	< 120 seconds
Voltage (multiple options)	220v, 3P/380v, 3P/V00v
Motor Power	7.5 kW
Max Hydraulic Pressure	22.5 Mpa



Specifications/images subject to change without prior notice. Images are for illustration purposes only. To validate warranty, proof of a valid maintenance contract will be required.



Specifications/images subject to change without prior notice. Images are for illustration purposes only. To validate warranty, proof of a valid maintenance contract will be required.