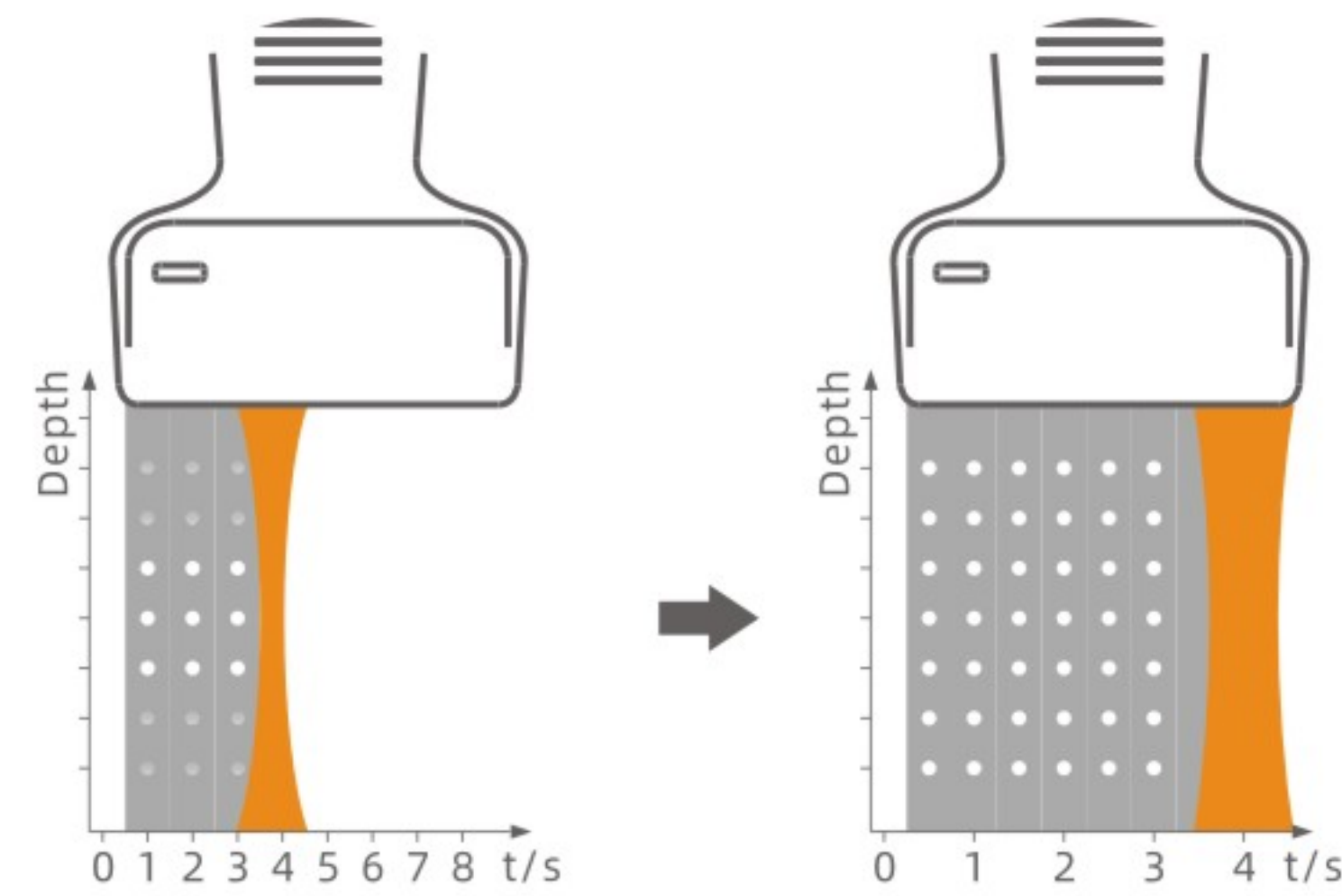


## Target Focus

The image focus in near and far field requires different signal intensity. This upgraded technology provides automatic compensation in signal transmission to further improves focus accuracy and image uniformity in the entire image area.

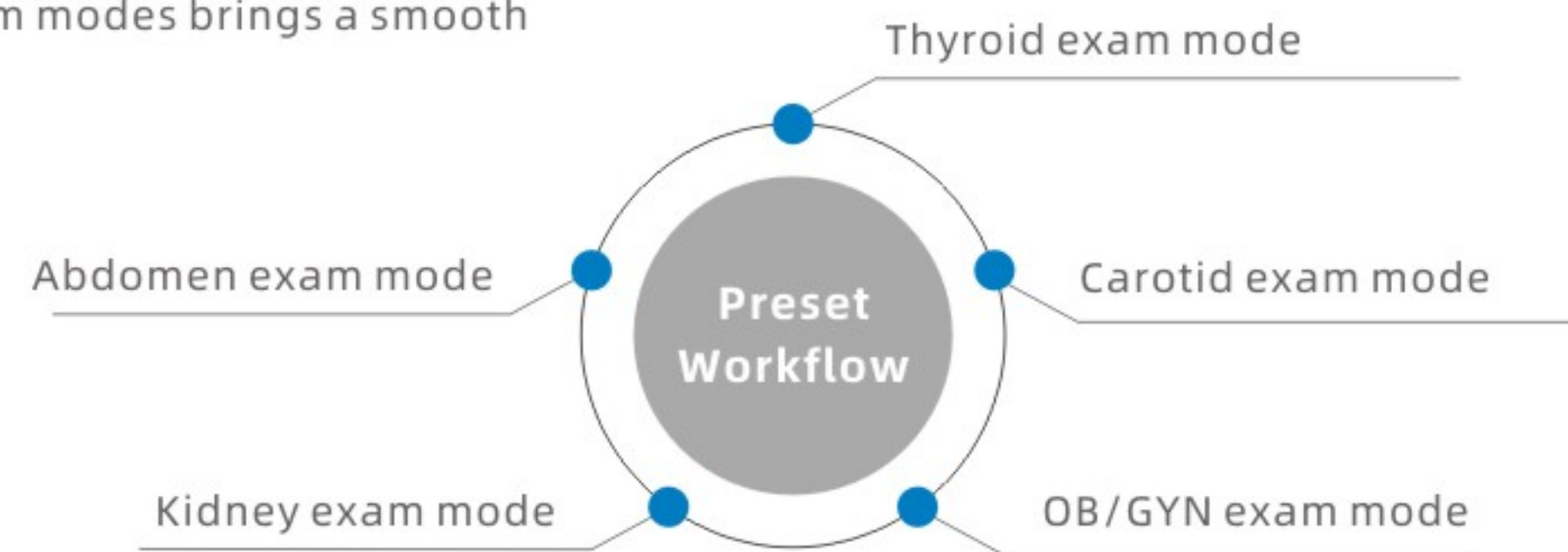
## Pixel Echo Zone (PEZ)

During wide band imaging processing, the system automatically collects echo information by larger processing zone to enhance acquisition efficiency and computing speed. Increased image frame rate facilitates a better and faster diagnostic experience.



## Easy operation with quick response for general applications

The preset workflow of Apogee 2G Exp features a variety of exam modes for general applications, which helps obtain premium images without complex parameter adjustment. Moreover, its efficient preset operation procedure for various exam modes brings a smooth diagnostic experience for clinicians.



## SIUI

### HEADQUARTERS:

Shantou Institute of Ultrasonic Instruments Co., Ltd.  
Add: No.77, Jinsha Road, Shantou 515041 Guangdong, China  
Tel: 86-754-8825 0150 Fax: 86-754-8825 1499  
<http://www.siui.com> E-mail: [siui@siui.com](mailto:siui@siui.com)

### HONG KONG OFFICE:

Shantou Institute of Ultrasonic Instruments (HK) Co., Ltd.  
Add: Room 2101, Tung Chiu Commercial Center 193 Lockhart Road, HK  
Tel: 852-2891 6722 Fax: 852-2891 6723



SIUI



SIUI Healthcare



SIUI1978



SIUI1978

All rights reserved to SIUI 2021  
Apogee 2G Exp EN10210723

# Apogee 2G Exp

Intelligent Wireless Handheld Ultrasound



# SIUI

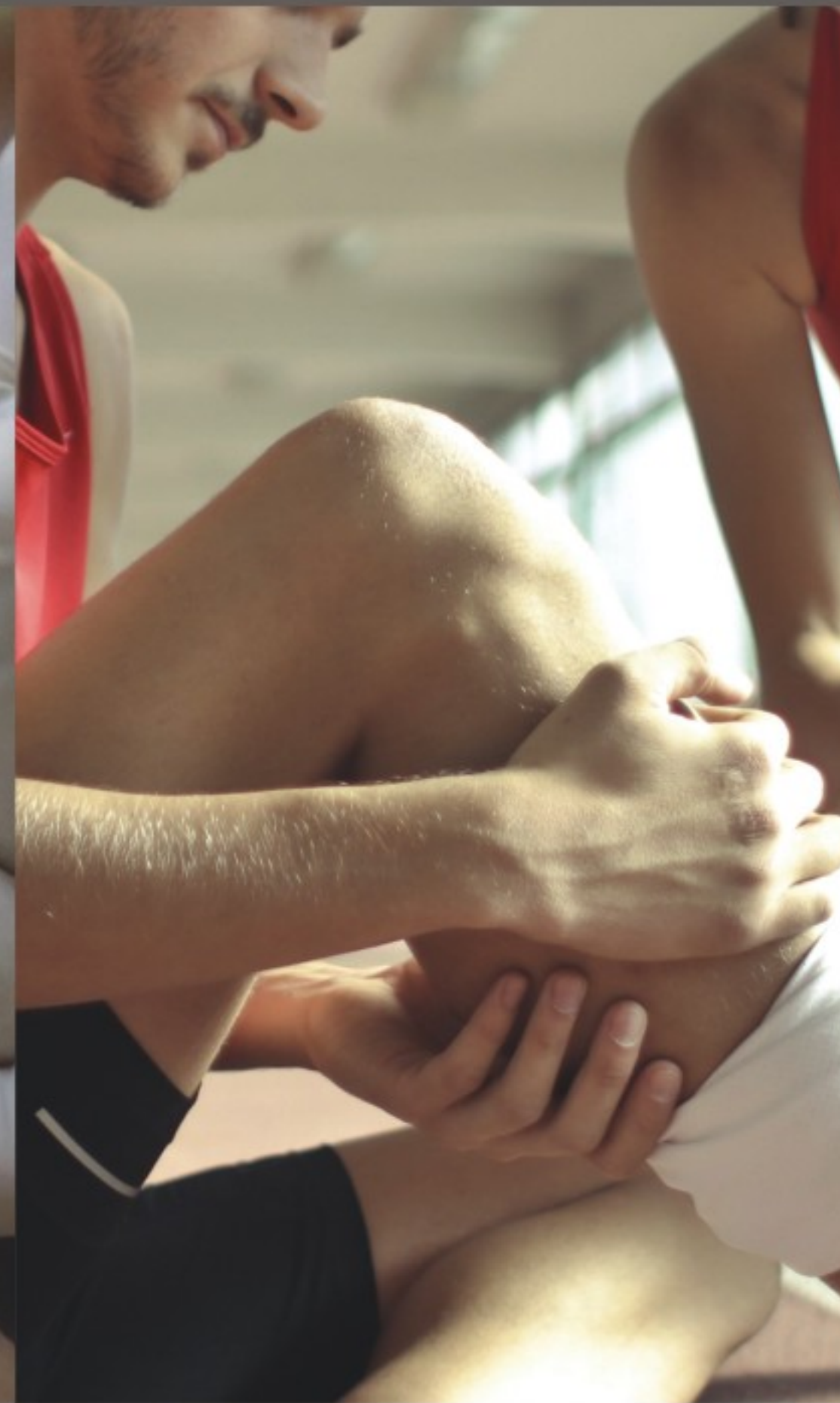




EMERGENCY



ANESTHESIA



MSK



PREOPERATIVE

# Versatility in your hand

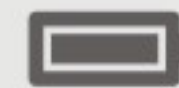
Apogee 2G Exp offers exceptional image performance with real-time and reliable diagnostic information for emergencies whether in complex outdoor environments or limited-spaced ambulances.



User-friendly  
gestures



WiFi  
connection



Battery life  
>4.5h



Net weight  
≤300g

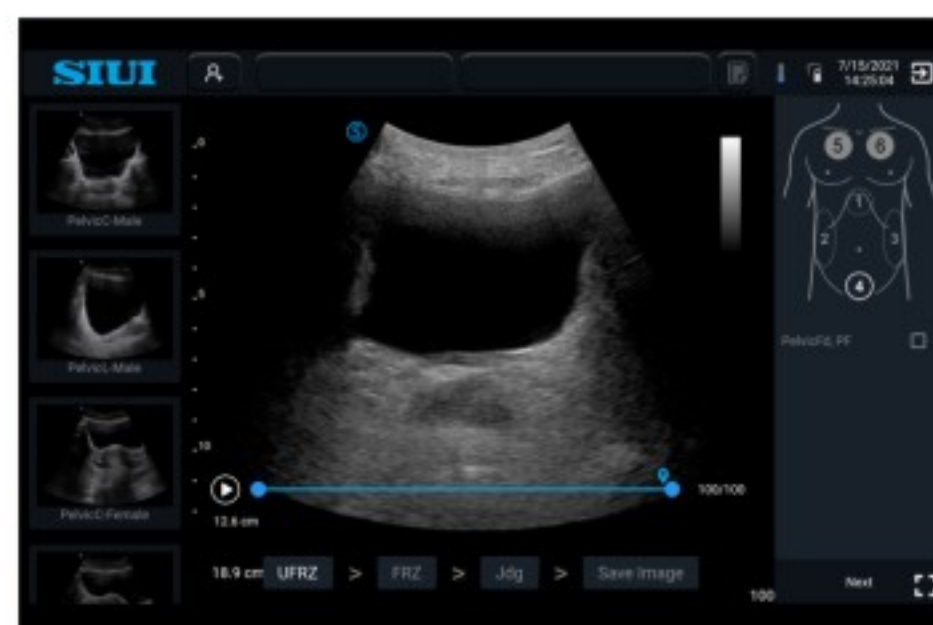


USB  
charging

## Smart solutions by your side

### E-fast

Equipped with E-fast(Extended Focused Assessment with Sonography in Trauma), Apogee 2G Exp can provide step-by-step operation guidance for detection in a trauma patient, enabling rapid decision making in emergency applications.



### Intelligent Guidance for Needle Biopsy

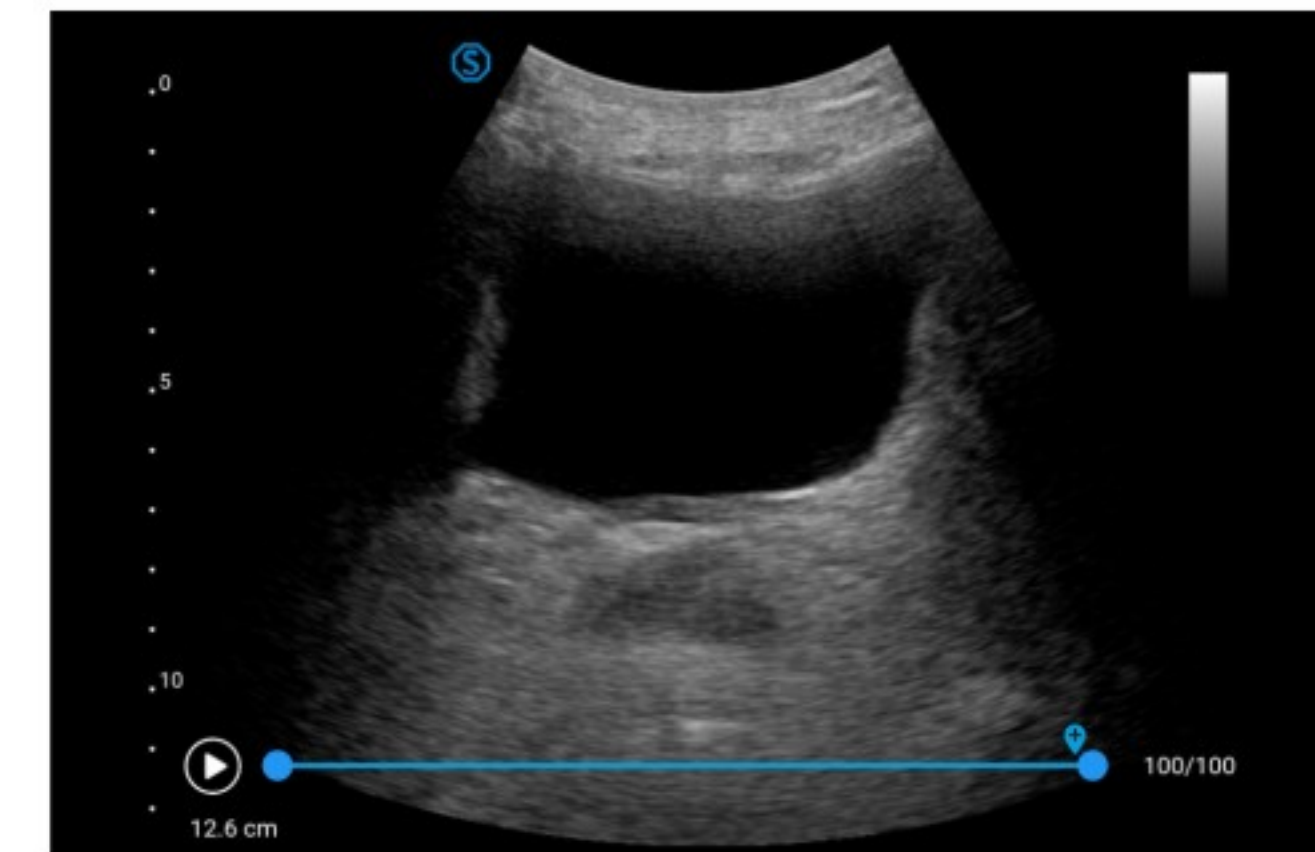
The simplified and smart operation procedure assists needle biopsy and deep vein catheterization.

### Visual Guidance for Local Anesthesia

The visual guidance supports efficient and precise local anesthesia, avoiding possible sequelae of blind puncture.

### Bladder Monitoring

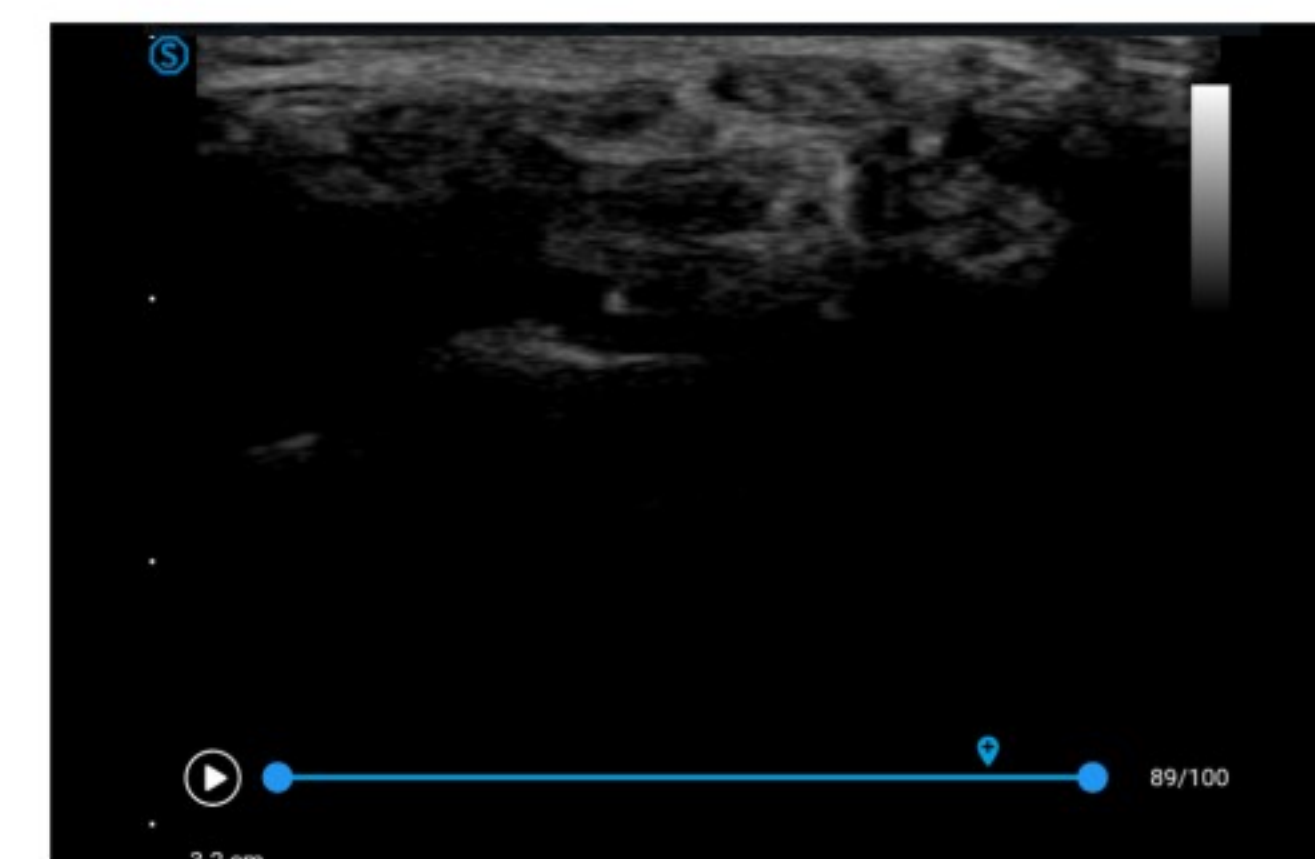
- Residual urine volume monitoring
- Urethral catheterization
- Catheterization nursing



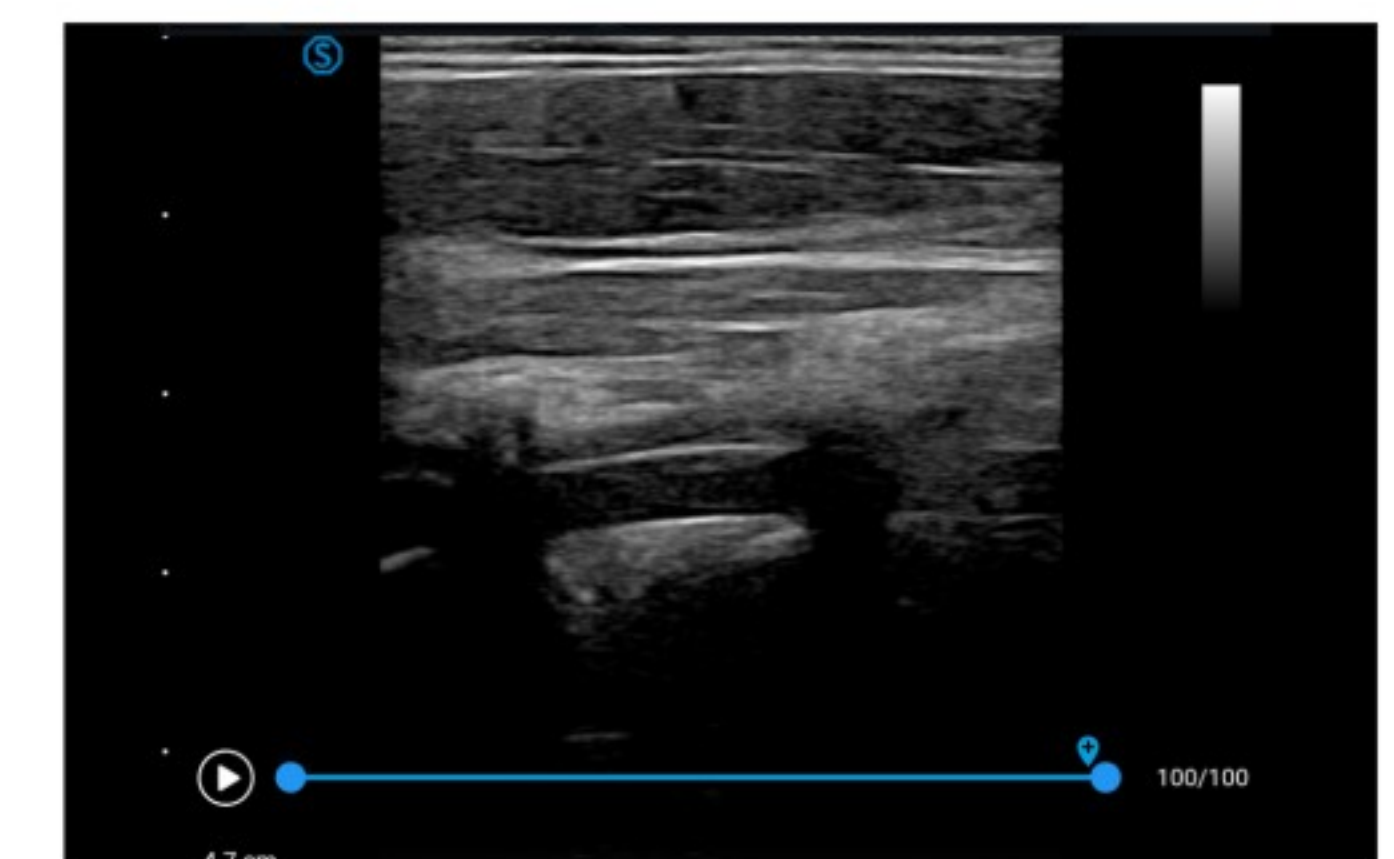
Bladder



Liver



Median nerve



Vertebral artery