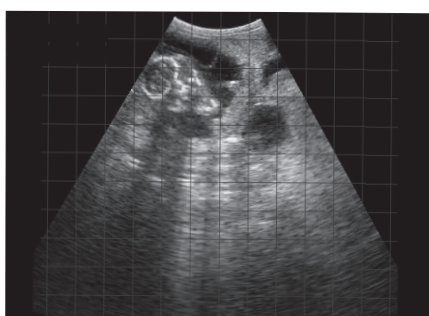


Easi-Scan Curve



Better All Round

The Easi-Scan Curve is an ideal solution offering a wider field of view and greater depth of penetration, all without compromise on image quality. This enables fast and accurate pregnancy diagnosis over a wide range of gestational ages.



Easi-Scan Curve



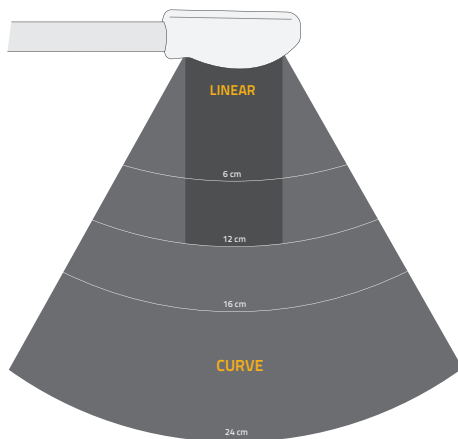
Better All Round

The **Easi-Scan Curve** portable cattle scanner was designed specifically for bovine practitioners to improve the accuracy of late pregnancy scanning. It can be used for routine reproductive scanning, pregnancy diagnosis & foetal sexing.

Image Quality and Detail

The curved-array probe gives a significantly wider field of view, with improved penetration (up to 24 cm) due to its' lower frequency range.

You get a balance of image detail for early pregnancy diagnosis (from 28 days) and penetration for aging later pregnancies (60-120 days) – even when the pregnancy has dropped over the pelvic brim.



Ease of Use & Safety

Easi-Scan's intuitive 4-button system really does make scanning with the Easi-Scan Curve a breeze.

The compact and lightweight design gives you the freedom to move quickly and stay safe in unpredictable environments. Our heads-up display options (NFI5000 Monocular or BUG goggles) improve your comfort and mobility further while allowing you to maintain peripheral vision. Use with the BCF Quick Release Introducer to prevent the strain of manual palpation and increase productivity.

Complete your Easi-Scan Curve with our range of accessories. Visit www.bcfultrasound.com



Improve comfort and mobility with heads-up display options

System Weight	2 kg with battery	Viewing Options	Monitor or Head Mount Display
Dimensions	15cm x 22cm x 7cm	Frame rate	40 frames/second
Transducer Types	Curve	Frequency	3 to 7MHz
Power	Battery operated	Accessories	NFI5000, BUGS, Introducer, LCD Remote Display
Storage	Up to 100 Images	Warranty	1 year manufacturers warranty

Australia
+61 3 9874 7543

New Zealand
+64 9 257 1212

sales@bcfultrasound.com
www.bcfultrasound.com

See More **Do More**