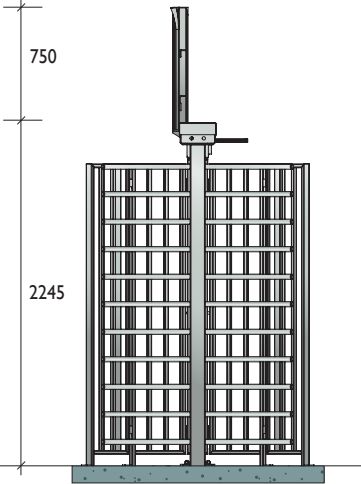
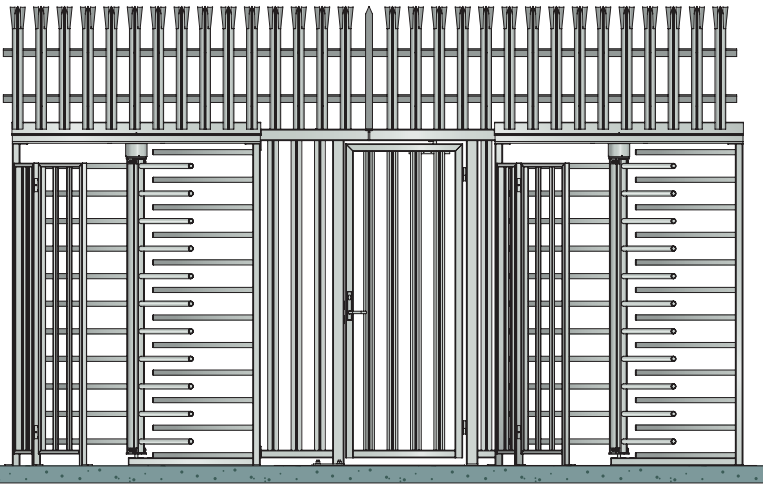
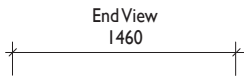
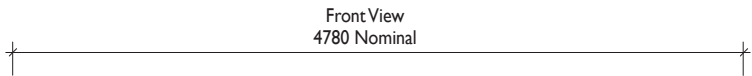
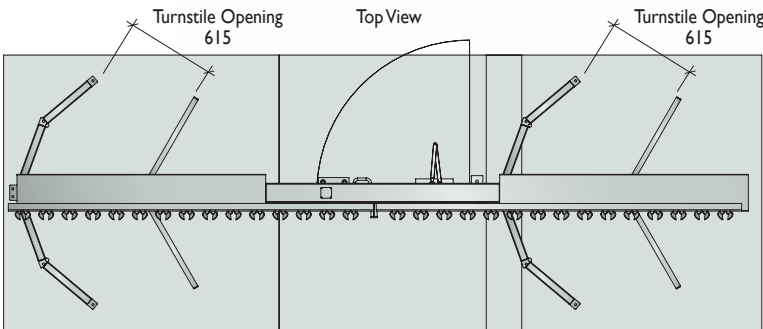


1300 780 450

**STFBDP1120**  
Double Security  
Pedestrian Gate

Double Security Turnstile  
with Pedestrian Gate  
Also available in looped bar  
STFLDP1120



**Intro** 2

**Gates** 14

Track 20

Cantilever 30

Swing 40

Bi-fold 46

Boom 52

Options 76

General 82

**Barriers** 94

Blockers 100

Tyre Spikes 102

Pre-cast 106

Other 111

**Pedestrian** 114

Turnstiles 114

Gates & Doors 136

**Fencing** 142

**Code Index** 153

Leda full height turnstiles integrate with other access control systems and cater for a flow of up to 20 people per minute. Controllers can be configured to provide a range of functions (entry only / exit only / entry and exit). Recommended minimum for all concrete footings, 30MPa.