

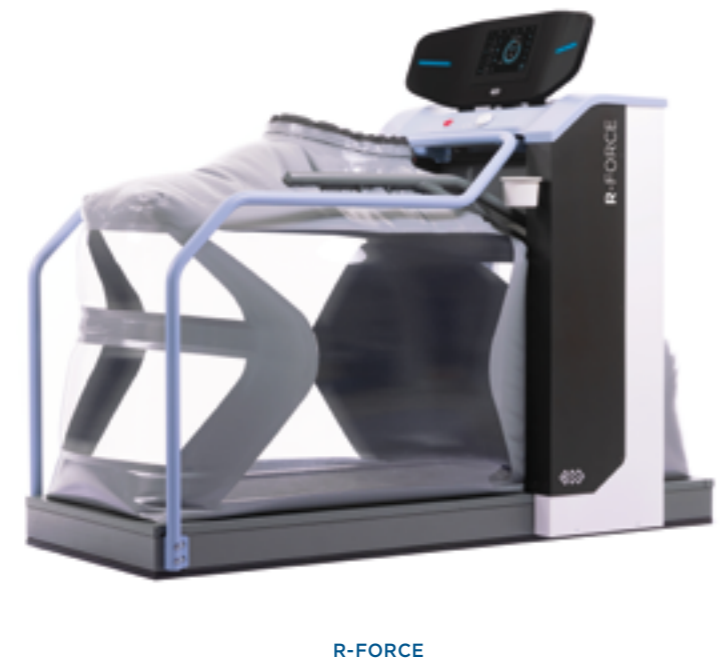


MEDICAL SOLUTIONS

FOR A HEALTHIER TOMORROW



ACHIEVE NEXT-LEVEL RESULTS



CONTENTS

- SHOCKWAVE THERAPY..... 4
- HIGH INTENSITY LASER..... 6
- SUPER INDUCTIVE SYSTEM 8
- TR-THERAPY 10
- THE BEST SOLUTION FOR ANY OF YOUR PATIENTS 12
- SPINAL DECOMPRESSION 16
- BTL-4000 SMART & PREMIUM 18
- BTL-5000 SERIES..... 28
- COMBINED UNITS..... 30
- DIATHERMY 32
- LYMPHASTIM 34
- CRYOTHERAPY 36
- BTL-CPMOTION..... 38
- TRACTION THERAPY 40
- CONSULTING ROOM EQUIPMENT 42
- HYDROTHERAPY SOLUTIONS..... 44
- R-GAIT 48
- R-FORCE 50
- R-LEAD..... 52
- R-TOUCH 54

SHOCKWAVE THERAPY

A WHOLE NEW FORMULA FOR CHRONIC PAIN

Shock waves are **acoustic waves that transmit high energy** to painful spots of the musculoskeletal system, where they stimulate cells and release growth factors. Shockwave therapy triggers **reparation processes** in tendons and bones, **eliminates calcifications**, relieves persistent **pain**, and relaxes overused muscles.

INDICATIONS

Tendinopathies

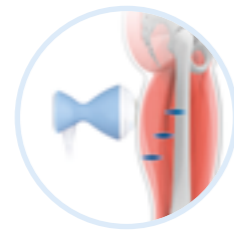
Calcifications

Bone nonunions

Myofascial syndrome

DIFFERENT SHOCKWAVE THERAPIES

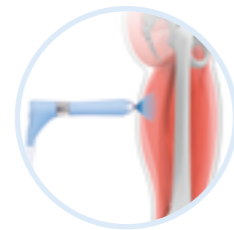
With its **adjustable penetration depth** and constant maximal intensity, a **focused shockwave** is suitable for the treatment of both **superficial and deep-lying tissues**.



Patented electroacoustic principle
The device generates a high voltage, which deforms a **single piezoelectric crystal** and creates an acoustic **convergent** wave that spreads through the patient's body.



Different transmitters can change the character of shocks and make radial shockwaves a great choice for **superficially lying tissues**.



Pneumatic principle
The energy of compressed air triggers a fast-speed movement of a projectile that hits the transmitter at the end of the applicator and spreads a **divergent** wave through the patient's body.



HIGHLIGHTS

Focused Shockwave

TECHNOLOGY

- **Patented** electroacoustic technology
- The only technology with a **3 million-shock lifespan and constant intensity**

PARAMETERS

- The perfect balance between high **Energy Flux Density** (0.65 mJ/mm²) and optimal **Focal Zone** size (5x35 mm)
- **The highest frequency** range on the market for a wide spectrum of indications
- Adjustable depth of penetration of up to 65 mm by using **only 3** coupling pads

APPLICATOR

- **Intelligent applicator** with continuous monitoring of shock intensity and touch screen display
- Adjusting parameters directly from **the applicator display**
- Easy maintenance and **liquid-free** circuit
- **Switch & Go** applicator replacement service

Radial Shockwave

TECHNOLOGY

- **The strongest portable** radial shockwave
- **4 million shocks** lifespan

PARAMETERS

- Pressure up to **6 bars** and frequency up to **22 Hz**

APPLICATOR

- **Ultralight** & ergonomically shaped applicator for effortless performance
- **Shock-absorbing** cushioning eliminates reverse shocks
- Fine-tuning of therapy parameters **directly on the applicator**
- **Smart** therapy indicator of parameters and **alert** of ongoing therapy
- Wide range of **transmitters** for different indications

PRODUCT SPECIFICATIONS

FOCUSED SHOCKWAVE

Model	BTL-6000 FSWT
Part number	P094.001
User interface	8.4" colour touch screen
Preset protocols	27
User-defined protocols	•
Encyclopaedia	•
Max. Energy Flux Density	0.65 mJ/mm ²
Focal zone size	5 × 5 × 35 mm
Frequency	1-25 Hz
Mode	Sequence, single therapy
Standard accessories	Applicator, holder for the applicator, 3 coupling pads, 2 lock rings

RADIAL SHOCKWAVE

Model	BTL-6000 RSWT ELITE	BTL-6000 RSWT PRO	BTL-6000 RSWT EASY
Part number	844-POELMA-M	844-POPRMA-M	844-POEAEA-M
User interface	8.4" colour touch screen	5.7" colour touch screen	LED interface
Preset protocols	22	22	7
Encyclopaedia	•	•	•
User-defined protocols	•	•	
Max. pressure	up to 6 bars	up to 4 bars	up to 4 bars
Frequency	1-22 Hz	1-15 Hz	1-15 Hz
Mode	Sequences, single, continuous, intensity gradient	Sequences, single, continuous, intensity gradient	Single, continuous
Intensity gradient mode	•	•	
Main unit weight	7 kg		
Standard accessories	Applicator MAGNUM with parameter controls, transmitters 9, 15 multifocused and 15 mm focused, RSWT exchangeable kit, gel 300 ml, SWT applicator holder	Applicator EASY, transmitters 9, 15 multifocused and 15 mm focused, gel 300 ml, SWT applicator holder	

Both products benefit from a wide range of **additional and optional accessories**. For more information **contact our sales representatives**.

HIGH INTENSITY LASER

NEXT-GENERATION TECHNOLOGY

HIGH INTENSITY LASER, with its **ROBOTIC SCANNING SYSTEM**, delivers the most gentle and effective pain management from the very early stage of injury! The healing effect of laser light is based on biostimulation and speeding up cell processes that contribute to pain suppression and faster injury recovery. The unique combination of **30 W** power and a **1064 nm** wavelength allows for targeting **deep-lying tissues**, maximizing pain relief, and delivering strong thermic therapies within a short time.

INDICATIONS

Back pain

Muscle and tendon ruptures

Joint distortions

Hematomas

Epicondylitis

AUTOMATED AND MANUAL THERAPY

ROBOTIC SCANNING SYSTEM

- **Intelligent** Robotic Scanning System covers body areas **up to 1200 cm²**
- Ideal for **back area**, **large** muscle groups, and joints
- **Temperature monitoring** of homogenous energy spread
- **Continuous control** of a safe distance between the patient and the Robotic Scanning System

MANUAL LASER THERAPY

- The most powerful and portable **30 W** manual laser therapy
- **Intelligent applicator** with therapy control buttons and indicator light
- The **optical system** for setting spot size within the range of 10-30 mm



HIGHLIGHTS

PARAMETERS

- **The most powerful 30-W** high intensity laser maximizes pulsed analgesia and delivers strong thermic therapies
- **1064 nm** wavelength for the most effective energy delivery to deep-lying tissues

INTELLIGENT FEATURES

- **Body Condition Screen** for personalized therapy tailored to suit every patient's condition
- Equipped with continuous **multi-level control** of power

Up to
1200cm²
body area



PRODUCT SPECIFICATIONS

HIGH INTENSITY LASER

Model	BTL-6000 HIGH INTENSITY LASER 10 W/ 20 W/ 30 W
Part number	P043.001/ P043.002/ P043.003
Display	8.4" / 5.7" intuitive colour touch screen
Power	10 W/ 20 W/ 30 W
Wavelength	1064 nm
Frequency	1 Hz-20 kHz
Duty factor	25%-75%
Emission modes	Continuous, Pulsed, Superpulse, Triangular, Single Pulse
Application area	1-500 cm ²
Preset protocols	43
Encyclopaedia	•
Standard accessories	2 safety eyewear, optical zoom attachment, applicator holder

Optional accessories

Part number P6000.210	Transportation case
Part number P6000.211	BTL-6000 Trolley
Part number P451.002	Scanning System Elite
Part number P043.014	Footswitch
Part number P5100.009	Patient cups for facial treatment

ROBOTIC SCANNING SYSTEM

Model	SCANNING SYSTEM ELITE
Part number	P451.004
Display	7" colour touch screen
Application area	25-1225 cm ²
Preset protocols	37
Features	Patient Position Control Thermal Perception Scan Thermal Camera Thermal Graph
Standard accessories	Trolley for Scanning System, Patient emergency button

SUPER INDUCTIVE SYSTEM

TAKING VERSATILITY TO THE NEXT LEVEL

The Super Inductive System uses **the deep-acting healing effects of high-intensity electromagnetic fields** in the treatment of various musculoskeletal system pathologies. High-intensity electromagnetic fields **depolarize nerves** and cause muscle contractions to relieve pain, release joint blockage, support the fracture healing process, and relax or strengthen muscles. The Super Inductive System is an **operator-free procedure** that saves you time, is applicable over clothing, and has **zero consumables and disposables**.

INDICATIONS

- Acute and chronic pain
- Joint blockages
- Fractures
- Muscle strengthening and relaxation
- Spasticity management

OPERATOR-FREE PROCEDURE

Therapy covers all stages of pain conditions



Apply even over the cast to prevent muscle atrophy



Can be combined with physiotherapy methods or strength training



It reduces swelling and pain even in the early stages of injury



Gentle joint mobilization and muscle relief at once



Reeducation and optimization of breathing stereotype



HIGHLIGHTS

PARAMETERS

- The frequency range of **1-150 Hz** allows coverage of a wide spectrum of indications
- Electromagnetic field intensity of **2.5 Tesla** triggers strong muscle contractions and contributes to pain management
- The highest intensity of stimulation of **28 kT/s**
- Wide range of frequency and amplitude **modulations** for maximized therapeutic efficiency

PATENTED TECHNOLOGY

- Cool-Flow technology** ensures continuous use of the device when treating multiple patients consecutively

PRODUCT SPECIFICATIONS

SUPER INDUCTIVE SYSTEM

Model	BTL-6000 SUPER INDUCTIVE SYSTEM ELITE	BTL-6000 SUPER INDUCTIVE SYSTEM PRO*
Part number	P6000.901	P6000.900
User interface	8.4" colour touch screen	5.7" colour touch screen
QUICK protocols	•	
Body Parts navigation	•	
Preset protocols	•	•
User-defined protocols	•	•
Patient database	•	•
Intensity	up to 2.5 T (max. dB/dt 28 kT/s)	
Frequency	up to 150 Hz	up to 60 Hz
Intensity modulations types	None, trapezoid, sine, staircase	
Pulse repetition rate modulations types	None, alternating, trapezoid, sine, random	
Standard accessories	Six-joint arm, applicator	

SUPER INDUCTIVE SYSTEM SEAT

Model	BTL-6000 SUPER INDUCTIVE SYSTEM SEAT*
Part number	P6000.925
Maximum working load (patient weight)	135 kg
Adjustable seat height range (±20 %)	42 to 50 cm

* For more information about availability, contact your local BTL branch or distributor.



TR-THERAPY

WHERE TECHNOLOGY EMBRACES THE HUMAN TOUCH

TR-Therapy is all about the combination of the **therapist's manual skills and tissue-selective heating** through the radiofrequency current that penetrates the human body and causes **deep tissue hyperthermy**. Its thermic effects relieve pain and regenerate muscles. Furthermore, it can be used during sports-specific exercises. TR-Therapy also allows for **athermic treatment**, which makes it suitable for posttraumatic edemas or hematomas.

INDICATIONS

Myofascial syndromes

Post-traumatic edemas

Soft tissue injuries

Back pain

TR-THERAPY CONCEPT

An extensive selection of techniques for **massage, joint mobilization, and muscle activation** techniques can be performed in three different ways of applications.

Monopolar application is frequently used when you need to cover one body part. The **bipolar application** allows you to guide the current pathway and treat multiple body areas in one session. **Statical application** frees your hands so you can control patients' posture during muscle workouts.

Monopolar application



Bipolar application



Static application



HIGHLIGHTS

TR-THERAPY CONCEPT

- Perform conventional therapies with a **monopolar application**
- Treat multiple body areas in one session with a **bipolar application**
- Create muscle workouts with **static applications**

APPLICATORS

- **Tissue selectivity** with capacitive and resistive modes
- 2 ergonomic applicators to fit **any handgrip**
- **Insulated electrodes** for enhanced safety

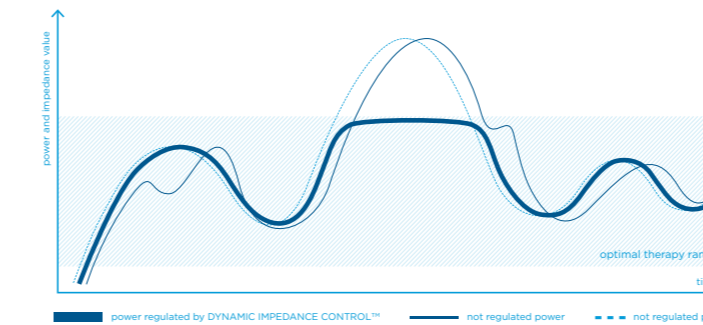
INTELLIGENT FEATURES

- **Audiovisual contact control**
- **Dynamic Impedance Control™*** for enhanced therapy safety

PARAMETERS

- Power of up to **320 W**
- Portable

* **Dynamic Impedance Control™** measures tissue impedance throughout the whole therapy and adjusts the power to fit the exact characteristics of the treated tissue.



PRODUCT SPECIFICATIONS

TR-THERAPY

Model	BTL-6000 TR-THERAPY ELITE	BTL-6000 TR-THERAPY PRO
Part number	P6000.501	P6000.502
User interface	8.4" colour touch screen	5.7" colour touch screen
QUICK protocols	•	•
Body Parts navigation	•	•
Preset protocols	•	•
Encyclopaedia	•	•
User-defined protocols	•	•
Patient database	•	•
Maximum power	320 W	150 W
Operating frequency	480-520 kHz	
Modes	Continuous, pulsed	
Outputs	For capacitive/resistive/neutral electrode	
Capacitive electrodes	4 sizes (20, 30, 50, 70 mm)	
Resistive electrodes	4 sizes (20, 30, 50, 70 mm)	
Neutral electrode	Metallic (160 x 240 mm)	

Standard accessories

Capacitive applicator, resistive applicator, 4 capacitive electrodes, 4 resistive electrodes, 1 neutral electrode, patient cable for capacitive electrode, patient cable for resistive electrode, RF cream 1l, 2 applicator holders, 2 patient cable holders

Optional accessories

Part number P6000.211	Plastic trolley
Part number P6000.521	Adhesive neutral electrode
Part number P6000.210	Transportation case
Part number P6000.520	RF cream
Part number P6000.523	Adhesive electrode for static application
Part number P2000.002	Holder for RF cream for plastic trolley
Part number P6000.542	Holder for neutral electrode for plastic trolley

THE BEST SOLUTION FOR

TR-THERAPY

Constantly hearing from your patients that they are tired and their muscles feel very stiff? TR-Therapy is just a perfect combination of your manual skills and tissue-selective heating, through the radiofrequency current that helps patients with:

- Myofascial syndromes
- Post-traumatic edemas
- Soft tissue injuries
- Back pain



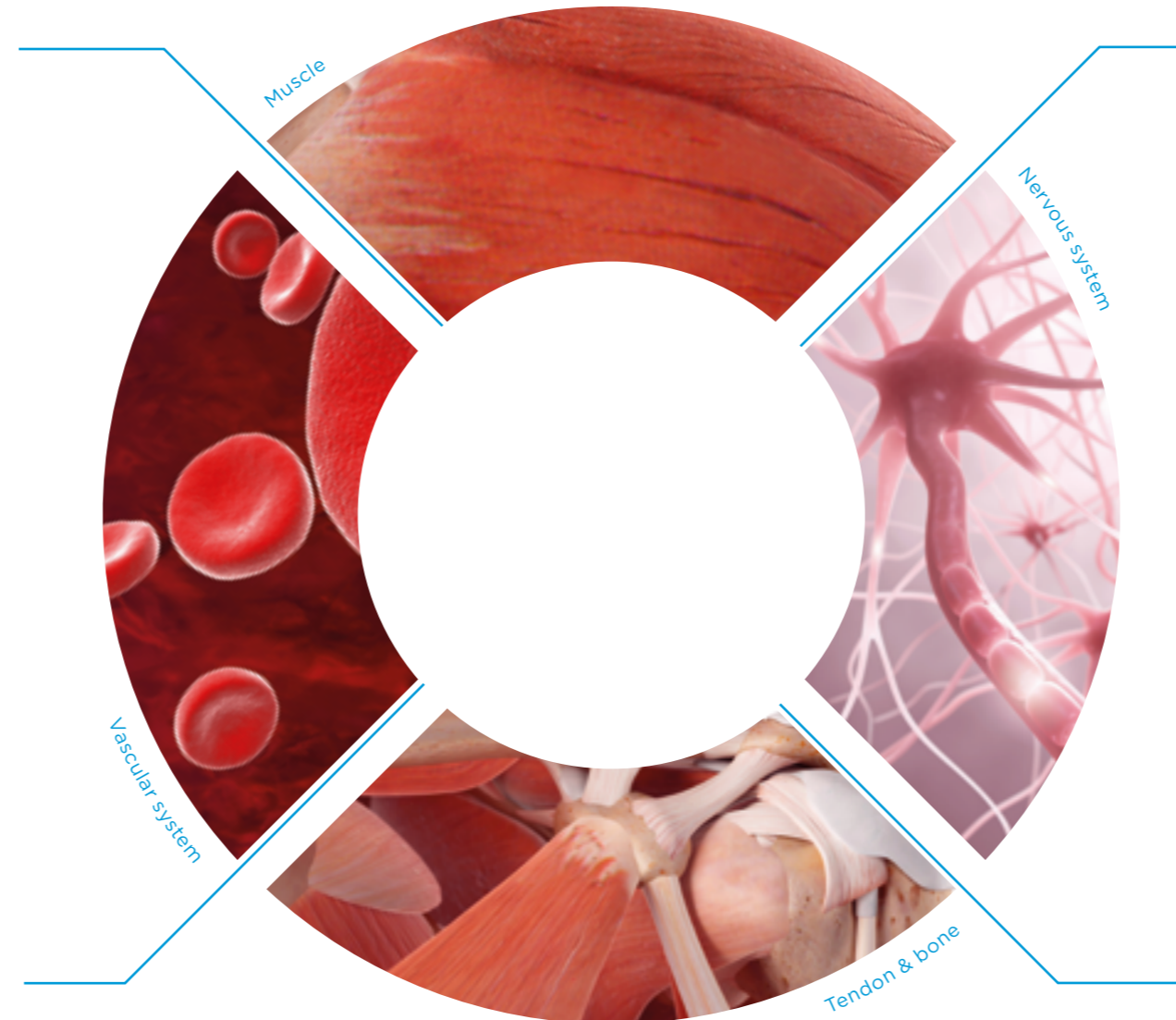
HIGH INTENSITY LASER

Are your patients shortly released from surgery or injured? Do you want to help them recover faster? Did you know that our HIGH INTENSITY LASER can speed up cellular healing based on biostimulation? This contributes to healing and tissue regeneration in:

- Back pain
- Muscle and tendon ruptures
- Joint distortions
- Hematomas
- Epicondylitis



ANY OF YOUR PATIENTS



SUPER INDUCTIVE SYSTEM

Nerve damage can significantly decrease your patients' quality of life. Help them restore nerve function and overcome their pain with the SUPER INDUCTIVE SYSTEM using the high-intensity electromagnetic field energy.

- Acute and chronic pain
- Joint blockages
- Fractures
- Muscle strengthening and relaxation
- Spasticity management



SHOCKWAVE THERAPY

Degenerative processes in tendons lead to their stiffness which is hard to address with manual techniques or stretching. SHOCKWAVE THERAPY provides fast pain relief and mobility restoration through mechanical stimulation in:

- Tendinopathies
- Calcifications
- Bone nonunions
- Myofascial syndrome

A SOLUTION FOR ANY OF YOUR PATIENTS

EXPLANATION	RADIAL SHOCKWAVE THERAPY	FOCUSED SHOCKWAVE THERAPY	HIGH INTENSITY LASER	TR-THERAPY	SUPER INDUCTIVE SYSTEM
Energy	divergent acoustic wave	convergent acoustic wave	laser light	radiofrequency current	electromagnetic field
Mechanism of action	superficial mechanical stimulation	deep mechanical stimulation	laser biostimulation	thermic effect	nerve depolarization
Key tissue	tendon	tendon, bone	cellular repair	muscle	nerve
Medical effect	healing start-up in superficial tendinopathies, chronic pain management	elimination of calcifications, healing of bone non-unions and tendinopathies at tendon-bone junction	healing of acute injuries anti-inflammatory effect acute pain management	muscle spasm relaxation muscle regeneration oedema removal	joint mobilization muscle stimulation and relaxation pain management
Penetration depth	up to 5 cm, maximum intensity spread superficially	adjustable depth of focal zone within range 0-35 mm, 15-50 mm, 30-65 mm	up to 10 cm	anywhere between electrodes	up to 10 cm
Application	manual	manual	operator free/manual	manual	operator free
Patient perception	pressure sensation up to mild discomfort	pressure sensation up to mild discomfort	intense heat	intense heat	muscle contraction or tingling
Medical branch	orthopaedics, PRM*, PT**	orthopaedics, PRM	orthopaedics, PRM, PT, sports medicine	PT, sports medicine	orthopaedics, PRM, neurology, PT
Application limits	any acute stage, spine area, head area	any acute stage, spine area, head area, organs with gas content	sensory deficit, safety requirements	sensory deficit, experienced manual therapist	head area, metal and electronic implantable devices
Disposables	shell, gel	pads, gel	none	cream, single-use electrode (optional)	none
Number of treatments	10 sessions	5 sessions	5-10 sessions	5-10 sessions	5-10 sessions
Application frequency	up to twice a week	once a week	up to daily	up to daily	up to daily
Treatment duration	10 min	5 min	5-15 min	minimally 15 min	up 10 min

*PRM (Physical and rehabilitation medicine)

**PT (Physical therapist)

NO 2 PATIENTS ARE ALIKE

INDICATION	RADIAL SHOCKWAVE THERAPY	FOCUSED SHOCKWAVE THERAPY	HIGH INTENSITY LASER	TR-THERAPY	SUPER INDUCTIVE SYSTEM
Acute back pain	N/A*	N/A	1 st CHOICE	OPTIONAL	2 nd CHOICE
Chronic back pain	OPTIONAL	OPTIONAL	OPTIONAL	1 st CHOICE	2 nd CHOICE
Degenerative joint disorder	2 nd CHOICE	1 st CHOICE	OPTIONAL	OPTIONAL	OPTIONAL
Joint sprains	N/A	N/A	1 st CHOICE	OPTIONAL	2 nd CHOICE
Degenerative disorder of spine	N/A	N/A	2 nd CHOICE	OPTIONAL	1 st CHOICE
Rheumatoid diseases	N/A	N/A	1 st CHOICE	OPTIONAL	2 nd CHOICE
Calcifications	2 nd CHOICE	1 st CHOICE	OPTIONAL	OPTIONAL	OPTIONAL
Enhancement of fracture healing	N/A	2 nd CHOICE	OPTIONAL	N/A	1 st CHOICE
Bone non-union	N/A	1 st CHOICE	N/A	N/A	N/A
Joint blockage	N/A	N/A	OPTIONAL	2 nd CHOICE	1 st CHOICE
Muscle atrophy	N/A	N/A	N/A	2 nd CHOICE	1 st CHOICE
Muscle hypertonus	2 nd CHOICE	OPTIONAL	OPTIONAL	1 st CHOICE	OPTIONAL
Muscle regeneration	OPTIONAL	OPTIONAL	2 nd CHOICE	1 st CHOICE	OPTIONAL
Muscle injury	N/A	N/A	1 st CHOICE	2 nd CHOICE	OPTIONAL
Myofascial syndrome	2 nd CHOICE	OPTIONAL	OPTIONAL	1 st CHOICE	OPTIONAL
Spasticity	2 nd CHOICE	2 nd CHOICE	OPTIONAL	OPTIONAL	1 st CHOICE
Tendinopathy	1 st CHOICE**	1 st CHOICE***	OPTIONAL	OPTIONAL	OPTIONAL
Nerve damage	N/A	N/A	2 nd CHOICE	OPTIONAL	1 st CHOICE
Sports injuries	N/A	N/A	1 st CHOICE	2 nd CHOICE	OPTIONAL
Post-traumatic oedemas	N/A	N/A	2 nd CHOICE	1 st CHOICE	OPTIONAL

*N/A (Not applicable)

** 1st choice in superficial tendinopathies

***1st choice in deep tendinopathies

SPINAL DECOMPRESSION

A NON-INVASIVE ALTERNATIVE TO SPINE SURGERY

Spinal decompression represents the **first-choice** treatment that relieves back pain of any origin regardless of its stage. The therapy is on the borderline of **next-level** manual medicine, a **non-invasive** alternative to spine surgery and **drug-free** back pain management. The therapy uses **automated decompressive forces** to mobilize joints, relieve the pressure over neuro-spinal structures, relax and elongate soft tissues. Pain-relieving positions can be fine-tuned to innumerable combinations according to the patient's condition.

INDICATIONS

Back pain indicated for spine surgery

Slipped disc in the cervical and lumbar areas

Spondylosis & chronic low back pain

Joint pain

THE MASTERY OF BACK PAIN MANAGEMENT

The most precise targeting of lumbar segments due to adjustable pelvic tilt.



Reduced pressure on nerve roots & stretching of thoraco-lumbar fascia.



The very first automated decompression for neck pain that perfectly substitutes manual therapy.



Wrist applications can be used to relieve nerve compression.



HIGHLIGHTS

- Innumerable treatment options for low back pain
- The very first automated decompression for neck pain that **substitutes manual therapy**
- The most gentle and precise dosing of decompressive forces by **100-gram** force increment

ADDITIONAL FEATURES

- **Therapy modes** for personalized treatment
- An integrated **heat kit** for enhanced therapeutic outcomes
- Automated pre-intervention tolerance test
- Belts for extremities
- **Parking position** for effortless return of the patient to the initial position

EXTENDED THERAPY OPTIONS

- Adapter for neck pain therapy in a **sitting position**
- Asymmetric adapter



PRODUCT SPECIFICATIONS

SPINAL DECOMPRESSION

Model	BTL SPINAL DECOMPRESSION PREMIUM
Part number	P096.101
Build-in cervical adapter	•
Heated cushion	•
Inversion therapy set	•
Asymmetric therapy adapter	•
Sitting therapy adapter	•
Standard accessories	Face pad, upholstered insert, remote control with a display, retractable castors, velcro fastening of the thoracic belt, holder with plastic covers for multiple positioning of the unit, axilla posts

Optional accessories for BTL SPINAL DECOMPRESSION

Part number P096.110	Face pad
Part number P096.111	Upholstered insert
Part number P096.112	Inversion therapy set
Part number P096.113	Axilla posts - 2 pcs.
Part number P096.114	Sitting therapy adapter
Part number P096.115	Asymmetric therapy adapter

BTL-6000 TRACTION THERAPY

Model	BTL-6000 TRACTION
Part Number	P096.001
User interface	5.7" colour touch screen
Preset protocols	•
Encyclopaedia	•
Modes	17
Traction force	0-100 kg
Traction speed	1-12 kg/s
Therapy time	1:00-99:59 min:sec
Hold time/Rest time	1-999 sec.
Additional features	Preset protocols and encyclopaedia
Standard accessories	Patient switch with holder, mounting kit

BTL-4000 SMART & PREMIUM

MUST-HAVE ESSENTIALS FOR PHYSIOTHERAPY

BTL-4000 SMART & PREMIUM is a highly advanced system that offers standalone and combined units with modalities such as **electrotherapy**, **ultrasound**, **low-level laser therapy**, and **magnetotherapy**. The outstanding parameters with exceptionally wide range of applicators and accessories make this system an ideal choice for modern physiotherapy practice.

ELECTROTHERAPY



ULTRASOUND THERAPY



LOW-LEVEL LASER THERAPY



MAGNETOTHERAPY



ELECTROTHERAPY

THE WIDEST SELECTION OF ELECTROTHERAPY WAVEFORMS

You will always have the right solution close at hand thanks to the industry's largest range of **over 30 distinct electrotherapy waveforms!** From unique currents for muscle relaxation, pain, and spasticity management to electrodiagnostics for personalized therapy of neurological patients. The BTL-4000 Series is available in two models, the **BTL-4000 SMART** and the **BTL-4000 PREMIUM**, featuring two-channel electrotherapy.

INDICATIONS

Acute and chronic pain management

Nerve and muscle tissue dysfunctions

Post-traumatic joint mobility impairments

Acute and chronic swelling reduction

BTL-4000 PREMIUM

- QUICK protocols
- Body Parts navigation
- 7" colour touch screen
- Portable



BTL-4000 SMART

- 4.3" colour touch screen
- Portable



Accessories for BTL-4000 Smart&Premium



Rubber electrodes



Vacuum unit



Vacuum electrodes



Adhesive electrodes

HIGHLIGHTS

WAVEFORMS

- EPIR
- Spastic stimulation
- High Voltage therapy
- Electrodiagnostics
- Suitable for combination therapy



PRODUCT SPECIFICATIONS

BTL-4000 SMART & PREMIUM ELECTROTHERAPY

Model	BTL-4620 Smart	BTL-4625 Smart	BTL-4620 Premium	BTL-4625 Premium
Part number	P2620.401	P2625.402	P2620.701	P2625.701
User interface	4.3" colour touch screen	4.3" colour touch screen	7" colour touch screen	7" colour touch screen
Knob			•	•
QUICK protocols			•	•
Body Parts navigation			•	•
Patient database			•	•
Encyclopaedia	•	•	•	•
Electrotherapy channels	2	2	2	2
Standard accessories	2 electrode connection cables in light grey and dark grey, 4 flat rubber electrodes 5x7 cm, sponge covers, set of fixation straps			
Electrodiagnostics			•	•
Types of currents	18	31	18	31

Optional accessories

Part number P2000.005	Battery pack (available only in selected countries)
Part number P5600.007	Electrode 7×5 cm - 2 mm input, 1 pc.
Part number P5600.008	Electrode 12×8 cm - 2 mm input, 1 pc.
Part number P006.014	Sponge cover for electrodes 7×5 cm, 1 pc.
Part number P006.016	Sponge cover for electrodes 12×8 cm, 1 pc.
Part number P2600.002	Electrode connection cable for electrotherapy for channel 1, light grey
Part number P2600.003	Electrode connection cable for electrotherapy, for channel 2, dark grey
Part number P5600.024	Set of fixation straps for electrodes, 4 pairs (1 pair long, 1 pair middle sized, 2 pairs short)
Part number P5600.010	Bipolar vaginal electrode (only available in selected countries)
Part number P5600.011	Bipolar rectal electrode (only available in selected countries)
Part number P5600.013	Holder for ball-point electrode for BTL-4000/5000
Part number P5600.014	Ball-point attachment for BTL-4000/5000 - 2 mm in diameter
Part number P5600.015	Ball-point attachment for BTL-4000/5000 - 6 mm in diameter
Part number P5600.023	Adhesive electrodes 75 × 140 mm, nonwoven (4 per package)
Part number P5600.026	Adhesive electrodes 32 mm, nonwoven (4 per package)
Part number P5600.027	Adhesive electrodes 50 mm, nonwoven (4 per package)
Part number P5600.028	Adhesive electrodes 40 × 40 mm, foam (4 per package)
Part number P5600.029	Adhesive electrodes 50 × 50 mm, foam (4 per package)
Part number P2000.005	Battery pack (only available in selected countries)
Part number P2000.006	Carry bag
Part number P2000.001	Plastic trolley for BTL-4000 Smart/Premium
Part number PVAC.207	BTL-Vac II - tabletop version for BTL-4000 Smart/Premium & BTL-5000
Part number P2000.010	Paper roll holder for Plastic trolley for BTL-4000 Smart/Premium
Part number P2000.012	Handle for transfers and accessory management

VACUUM UNIT

Model	BTL-Vac II
Part number (in-built in the BTL Trolley)	PVAC.200
Part number (tabletop option)	PVAC.207
Number of outputs	2
Modes	Continuous, pulsed
Intensity range	0.06-0.22 bar
Weight	1.9 kg

ULTRASOUND THERAPY

OPERATOR-FREE ESSENTIAL FOR EVERY PRACTICE

The world's first hands-free ultrasound uses **Rotary Field Technology**. The principle is based on the sequential activation of multiple ultrasound crystals and automated monitoring of their rotation speed, output power, and depth of penetration. Handsfree sono can save you up to three working weeks and ease your daily patient workflow.

INDICATIONS

Muscle disorders

Connective tissue pathologies

Reduction of post-traumatic swelling

Acceleration of the healing process

BTL-4000 PREMIUM

- Optional HandsFree Sono applicator
- QUICK protocols
- Body Parts navigation
- 7" colour touch screen
- Portable



BTL-4000 SMART

- Optional HandsFree Sono applicator
- 4.3" colour touch screen
- Portable



Accessories for BTL-4000 Smart&Premium



Handsfree Sono 6



Handsfree Sono 4



Ultrasound head 5 cm²



Ultrasound head 1 cm²

HIGHLIGHTS

APPLICATORS

- HandsFree Sono saving the operator's time and effort
- Ergonomic heads with visual and acoustic contact signalization
- Preheated multi-frequency heads



PRODUCT SPECIFICATIONS

BTL-4000 SMART & PREMIUM ULTRASOUND

Model	BTL-4710 SMART	BTL-4710 PREMIUM
Part number	P2710.401	P2710.701
User interface	4.3" colour touch screen	7" colour touch screen
Knob		•
QUICK protocols		•
Body Parts navigation		•
Patient database		•
Encyclopaedia	•	•
Number of independent channels	1	1
Number of applicators simultaneously connected	2	2
Modular frequency	10-150 Hz	10-150 Hz
Duty factor	6.25-100%	6.25-100%
Modes	Continuous, pulsed	Continuous, pulsed
Max. intensity in continuous/pulsed mode	2 W/cm ² /3 W/cm ²	2 W/cm ² /3 W/cm ²
Frequency 1 MHz, 3 MHz, 1/3 MHz	•	•
Standard accessories	Ultrasound head 5 cm ² , gel 300 ml	

Optional accessories

Part number P2700.004	HandsFree Sono 6 crystals (including 3 fixation straps)
Part number P2700.003	HandsFree Sono 4 crystals (including 3 fixation straps)
Part number P2700.002	Ultrasound head 5 cm ²
Part number P2700.001	Ultrasound head 1 cm ²
Part number P007.011	Ultrasound gel 1 l
Part number P007.010	Ultrasound gel 300 ml
Part number P2000.005	Battery pack (available only in selected countries)
Part number P2000.006	Carry bag
Part number P2000.001	Plastic trolley for BTL-4000 Smart/Premium, BTL-5000 Series
Part number P2700.008	Plastic holder for HandsFree Sono
Part number P2700.005	Set of fixation straps for HandsFree Sono (3 pairs)
Part number P2700.006	Magnetic frame for HandsFree Sono 4
Part number P2700.007	Magnetic frame for HandsFree Sono 6
Part number P2000.010	Paper roll holder for Plastic trolley for BTL-4000 Smart/Premium
Part number P2000.012	Handle for transfers and accessory management

LOW-LEVEL LASER THERAPY

SUBTLE BIOSTIMULATION FOR EVERY MEDICAL OFFICE

Both the BTL-4000 Smart and the BTL-4000 Premium Lasers have a **wide spectrum of powerful applicators** with two types of wavelengths and adjustable intensity levels. Choose from 10+ red, infrared, and combined-wavelength probes, clusters, and operator-free solutions for **conventional low-level laser therapy**.

INDICATIONS

Pain of musculoskeletal system

Skin inflammatory conditions

Scars and wound healing

Soft-tissue injuries

BTL-4000 PREMIUM

- QUICK protocols
- Body Parts navigation
- 7" colour touch screen
- Portable



BTL-4000 SMART

- 4.3" colour touch screen
- Portable



Accessories for BTL-4000 Smart&Premium



Laser clusters



Infrared laser probes



Red laser probes

HIGHLIGHTS

TECHNOLOGY

- Continuous and pulsed emission modes
- Automatic calculation of therapy parameters
- Presets for laser acupuncture
- Holder for operator-free application



PRODUCT SPECIFICATIONS

BTL-4000 SMART & PREMIUM LOW-LEVEL LASER

Model	BTL-4110 SMART	BTL-4110 PREMIUM
Part number	P2110.401	P2110.701
User interface	4.3" colour touch screen	7" colour touch screen
Knob		•
QUICK protocols		•
Body Parts navigation		•
Patient database		•
Encyclopaedia	•	•
Number of probes simultaneously connected	2	2
Modes	Continuous/pulsed	Continuous/pulsed
Dosage	0.1-100 J/cm ²	0.1-100 J/cm ²
Frequency	0-10 000 Hz	0-10 000 Hz
Therapy area	0.1-100 cm ²	0.1-100 cm ²
Duty factor	35-90%, 100%	35-90%, 100%
Laser class	3B	3B
Standard accessories		Holder for laser probe

Optional accessories

Part number P2000.005	Battery pack (available only in selected countries)
Part number P2000.001	Plastic trolley for BTL-4000 Smart/Premium, BTL-5000 Series
Part number L458.211	Probe 685nm/30mW
Part number L458.212	Probe 685nm/50mW
Part number L458.201	Probe with additional light 830nm/50mW
Part number L458.202	Probe with additional light 830nm/100mW
Part number L458.203	Probe with additional light 830nm/200mW
Part number L458.204	Probe with additional light 830nm/300mW
Part number L458.205	Probe with additional light 830nm/400mW
Part number L455.201	Red laser cluster - 4x 685nm/50mW, 13x 470nm/16mW (blue light), total continual laser output power 200mW
Part number L455.202	Infrared laser cluster - 4x 830nm/200mW, 13x 470nm/16 mW (blue light), total continual laser output power 800mW
Part number L455.203	Infrared laser cluster - 4x 830nm/325mW, 13x 470nm/16mW (blue light), total continual laser output power 1300mW
Part number L455.204	Combined (red and infrared) laser cluster - 4x 685nm/50mW, 4x 830nm/200mW, 13x 470nm/16mW (blue light), total continual laser output power 1000mW
Part number L455.205	Combined (red and infrared) laser cluster - 4x 685nm/50mW, 4x 830nm/325mW, 13x 470nm/16mW (blue light), total continual laser output power 1500mW

MAGNETOTHERAPY

CONVENTIONAL SOLUTIONS FOR PAIN MANAGEMENT

Both BTL-4000 Smart and the BTL-4000 Premium feature **up to 4 magnetotherapy channels** in one unit and a large selection of powerful magnetotherapy applicators. All of them are equipped with unique **FMF Technology™** that screens off the magnetic field from the operator's side of the applicator. While the patient benefits from the magnetotherapy during the treatment, the therapist is not exposed to the magnetic field.

INDICATIONS

Post-traumatic conditions

Delayed and non-union fractures

Degenerative and rheumatological disorders

Post-surgical and chronic pain conditions

BTL-4000 PREMIUM

- Up to 4-channel magnetotherapy units
- QUICK protocols
- Body Parts navigation
- 7" colour touch screen



BTL-4000 SMART

- Up to 4-channel magnetotherapy units
- 4.3" colour touch screen



Accessories for BTL-4000 Smart&Premium



Multi-disc applicator



Ring applicator



Linear applicator



Solenoid 30 cm & 60 cm



Couch with applicator

HIGHLIGHTS

APPLICATORS

- Pulsed Magnetic Field in rectangular, rectangular protracted, exponential, sine and triangular pulses
- User-defined series of magnetic pulses
- Comfortable and lightweight applicators



PRODUCT SPECIFICATIONS

BTL-4000 SMART & PREMIUM MAGNETOTHERAPY

Model	BTL-4920 PREMIUM	BTL-4940 PREMIUM
Part number	P2920.701	P2940.701
User interface	7" colour touch screen	7" colour touch screen
Knob	•	•
QUICK protocols	•	•
Body Parts navigation	•	•
Patient database	•	•
Encyclopaedia	•	•
Number of output channels	2	4
Maximum intensity of magnetic field	128 mT	128 mT
Frequency range	0-166 Hz	0-166 Hz
Additional feature	Presets with encyclopaedia	

Model	BTL-4920 SMART	BTL-4940 SMART
Part number	P2920.401	P2940.401
User interface	4.3" colour touch screen	4.3" colour touch screen
Number of output channels	2	4
Maximum intensity of magnetic field	128 mT	128 mT
Frequency range	0-166 Hz	0-166 Hz
Additional feature	Presets with encyclopaedia	

Optional accessories

Part number P2000.001	Plastic trolley for BTL-4000 Smart/Premium, BTL-5000 Series
Part number P5900.001	Disc applicator
Part number P5900.002	Double disc applicator
Part number P5900.003	Multi disc applicator
Part number P5900.004	Linear applicator
Part number P5900.005	Solenoid 30 cm
Part number P5900.006	Solenoid 60 cm
Part number P5900.013	Applicator ring
Part number P5900.017	Couch with magnetotherapy applicator (Solenoid 70 cm)
Part number P5900.014	Belt for magnetic applicator (disc) 60 cm
Part number P5900.015	Belt for magnetic applicator (double disc) 85 cm
Part number P5900.016	Belt for magnetic applicator (multi disc) 190 cm
Part number P5900.007	Extension cable for magnetic applicators
Part number P2000.006	Carry bag
Part number P2000.001	Plastic trolley for BTL-4000 Smart/Premium, BTL-5000 Series
Part number P5900.021	Magnetotherapy couch chain with cable for BTL-4000/5000

BTL-5000 SERIES

UNIQUE MODULAR SYSTEM

The **BTL-5000 SERIES** represents a modular system embracing electrotherapy, ultrasound, low-level laser therapy and magnetotherapy. Select the modalities you currently need, and later, as your practice grows, **upgrade** your BTL-5000 with other modalities. **BTL-5000 SERIES** allows treatment delivery for up to **4 patients at the same time** and covers a wide spectrum of indications.

ELECTROTHERAPY



ULTRASOUND THERAPY



LOW-LEVEL LASER THERAPY



MAGNETOTHERAPY



COMBINED UNITS

BTL-4000 SMART & PREMIUM



BTL-4820SL PREMIUM	Part number P2820.781	2 basic	1	1
BTL-4825SL PREMIUM	Part number P2825.781	2 extended	1	1
BTL-4820S SMART	Part number P2820.471	2 basic	1	
BTL-4825S SMART	Part number P2825.471	2 extended	1	
BTL-4820S PREMIUM	Part number P2820.771	2 basic	1	
BTL-4825S PREMIUM	Part number P2825.771	2 extended	1	
BTL-4820L SMART	Part number P2820.481	2 basic		1
BTL-4825L SMART	Part number P2825.481	2 extended		1
BTL-4825M2 SMART	Part number P2825.452	2 extended		2
BTL-4825M2 PREMIUM	Part number P2825.752	2 extended		2
BTL-4800SL SMART	Part number P2800.400		1	1
BTL-4800LM2 SMART	Part number P2800.451			1 2
BTL-4800LM2 PREMIUM	Part number P2800.751			1 2

1-one channel 2-two channel basic-basic waveforms extended-extended range of waveforms

BTL-5000 SERIES



BTL-5816SLM COMBI	Part number P5816.129	1-interferential basic	1	1	1
BTL-5818SLM COMBI	Part number P5818.129	1-interferential extended	1	1	1
BTL-5820SL COMBI	Part number P5820.101	2 basic	1	1	
BTL-5825SL COMBI	Part number P5825.101	2 extended	1	1	
BTL-5820S COMBI	Part number P5820.103	2 basic	1		
BTL-5825S COMBI	Part number P5825.103	2 extended	1		
BTL-5825L COMBI	Part number P5825.105	2 extended		1	
BTL-5825M2 COMBI	Part number P5825.123	2 extended			2
BTL-5800SL COMBI	Part number P5800.101		1	1	
BTL-5800LM2 COMBI	Part number P5800.119			1	2

1-one channel 2-two channel basic-basic waveforms extended-extended range of waveforms

DIATHERMY

DEEP TISSUE WARM-UP

Diathermy uses **high-frequency electromagnetic energy** that non-invasively penetrates the human body and causes heat in the treated area. Diathermy **increases blood flow, speeds up metabolism processes**, and changes the rheological properties of soft tissues. BTL provides both **shortwave and microwave diathermy**.

BTL Shortwave is based on the heating effect of capacitive and inductive applicators that can be used for both **superficial and deep-lying tissues**. Shortwave diathermy increases vasodilation, which leads to muscle relaxation and pain relief.

INDICATIONS

- Muscle spasms
- Back pain
- Tendinopathies
- Arthritis and other joint degenerative diseases

BTL Microwave uses radiators that emit electromagnetic energy in the microwave frequency bands to generate moderate heat in the **superficially lying tissues**.

INDICATIONS

- Muscular diseases and spasms
- Edemas
- Hematomas
- Pain relief

HIGHLIGHTS

Shortwave Diathermy

PARAMETERS

- Power of **up to 400 W**
- One-channel capacitive field
- One- or two-channel inductive field
- Continuous and pulsed modes

Microwave Diathermy

PARAMETERS

- Power of **up to 250 W**
- 1-channel
- Continuous and pulsed modes

PRODUCT SPECIFICATIONS

BTL-6000 SHORTWAVE & MICROWAVE

Model	BTL-6000 SHORTWAVE 400	BTL-6000 SHORTWAVE 200
Part number	P6000.310	P6000.300
User interface	5.7" colour touch screen	
User-defined protocols	•	
Encyclopaedia	•	
Channels	1 or 2 inductive/ 1 capacitive	1 or 2 inductive
Modes	Continuous, pulsed	
Power	400 W pulsed, 200 W continuous	200 W pulsed, 100 W continuous
Pulse frequency	50-1500 Hz	
Pulse length	50-2000 µs	
Standard accessories	Trolley	

Model	BTL-6000 MICROWAVE
Part number	P6000.601
User interface	5.7" colour touch screen
User-defined protocols	•
Encyclopaedia	•
Modes	Continuous, pulsed
Power	250 W
Standard accessories	6-joint arm, RF cable, trolley

Both products benefit from a wide range of **additional and optional accessories**. For more information **contact our sales representatives**.



LYMPHASTIM

ADVANCED PRESSOTHERAPY SYSTEM

The lymphatic system helps remove toxins from the body. In certain health conditions, the physiological lymph flow can be interrupted causing lymph fluid to build up in a particular area of the body. Typically affected are arms or legs where lymphedema occurs. Lymphastim performs a form of gentle massage that encourages the movement of lymph fluids around the body. Lymphastim works on the pneumatic pressotherapy principle and is drug and side-effect free.

INDICATIONS

Lymphoedema

Post-traumatic and post-surgical swelling

Heavy-legs syndrome

WIDE RANGE OF APPLICATORS

Trousers 24 chambers with velcro



Trousers 24 chambers with zipper



Single leg applicator



Trousers 24 chambers with velcro, XL size



Trousers 24 chambers



Arm applicators



HIGHLIGHTS

APPLICATORS

- Applicators with **overlapping** chambers technology
- **Automatic** identification of the applicators
- Connectors for easy applicator change with a single click
- **Automatic sleeve emptying** after treatment for comfortable handling



PRODUCT SPECIFICATIONS

BTL LYMPHASTIM

Model	BTL-6000 LYMPHASTIM 12 TOPLINE	BTL-6000 LYMPHASTIM 12 EASY	BTL-6000 LYMPHASTIM 6 EASY
Part number	P6000.003	P6000.002	P6000.001
User interface	5.7" touch screen	LED display	LED display
Preset protocols (programs in sequences)	•	•	•
User-defined protocols	•	•	•
Encyclopaedia	•	•	•
Preset programs	15	8	8
Number of channels	12	12	6
Pressure setting	20-160 mmHg	20-160 mmHg	20-160 mmHg
Gradient	0-100% continuous setting	0, 10, 20, 30%	0, 10, 20, 30%
Standard accessories	Basic tube 12 TOPLINE	Basic tube 12 EASY	Basic tube 6 EASY

Optional accessories

Lymphastim 12 Easy/12 Topline

Part number P6000.060	Trousers 24 chambers
Part number P6000.059	Trousers 24 chambers with velcro
Part number P6000.071	Trousers 24 chambers with velcro - size XL
Part number P6000.072	Trousers 24 chambers with zipper
Part number P6000.065	Arm 8 chambers
Part number P6000.075	Arm 8 chambers - size S
Part number P6000.067	Leg 10 chambers - size L
Part number P6000.066	Leg 10 chambers - size M
Part number P6000.076	Leg 10 chambers - size S

Lymphastim 6 Easy

Part number P6000.061	Trousers 12 chambers
Part number P6000.064	Arm 6 chambers
Part number P6000.074	Arm 6 chambers - size S
Part number P6000.063	Leg 6 chambers - size L
Part number P6000.062	Leg 6 chambers - size M
Part number P6000.077	Leg 6 chambers - size S

Optional accessories for all units

Part number P6000.034	Interface for 2 arms or legs
Part number P6000.070	Extension strip for trousers 24, 12
Part number P6000.069	Extension strip for leg applicators - size L
Part number P6000.068	Extension strip for leg applicators - size S, M
Part number P5002.009	Trolley
Part number P6000.211	Plastic trolley
Part number P6000.073	Extension strip for trousers 24 chambers with zipper
P6000.210v101	Transportation case for BTL-6000

CRYOTHERAPY

THE VERY FIRST HANDS-FREE EXPERIENCE

The very first cryotherapy that provides **hands-free** & conventional **dynamic therapy** techniques. Very low temperatures **reduce inflammation**, **relieve pain**, and **relax muscles**. Hands-free cryotherapy sleeves combine cold and compression to reduce swelling in the afflicted region.

INDICATIONS

Pain and inflammation

Rheumatic diseases

Sports injuries & muscle spasms

Post-surgery conditions

MS & stroke-related hemiplegia

HANDS-FREE AND DYNAMIC APPLICATIONS

Muscle strains or inflammatory conditions in upper extremities



Post-surgical shoulder conditions



Low-back pain



Flat stream nozzle for fascial techniques



Wrist pain



Knee pain



HIGHLIGHTS

PARAMETERS

- The first **hands-free** cryotherapy
- **Dynamic** cryotherapy
- High-performance cooling of **-35°C**

SETS

- **Hands-free application sleeves** for physiotherapy, orthopedics and sports medicine
- Various sizes of **nozzles** for basic and advanced dynamic cryotherapy applications

PRODUCT SPECIFICATIONS

CRYOTHERAPY

Model	BTL CRYOTHERAPY
Part number	005-PO22060-M
User interface	7.0" TFT LED backlight with capacitive touch panel
Preset protocols	•
User-defined protocols	•
Cooling temperature	-35°C
Coolant type	R452a
Airflow	1000l/min

Optional accessories

Part number 005-STANDHOSE-M	Standard hose
Part number 005-LIGHTHOSE-M	Lightweight hose
Part number 005-ARM-M	Therapy arm
Part number 005-SLEHFSET-M	Sleeves set - handsfree
Part number 005-SLESPSET-M	Sleeves set - sports
Part number 005-SLEEVEANK-M	Ankle sleeve
Part number 005-SLEEVEELB-M	Elbow sleeve
Part number 005-SLEEVEFLAT-M	Flat sleeve
Part number 005-SLEEVECONM-M	Conical sleeve M
Part number 005-SLEEVECONL-M	Conical sleeve L
Part number 005-SLEEVEERING-M	Ring sleeve
Part number 005-SLEEVELEG-M	Leg sleeve
Part number 005-DOUBSLEEAD-M	Double sleeve adaptor
Part number 005-SINGSLEEAD-M	Single sleeve adaptor
Part number 005-NOZZLESET-M	Standard nozzles set
Part number 005-NOZZLEFS-M	Flat stream nozzle
Part number 005-BUCKETHOLD-U	Bucket holder
Part number 005-FOCUSTIP-M	Focusing tip
Part number 005-LASPROCLAL-M	Large laser probe clamp (L)
Part number 005-LASPROCLAM-M	Medium laser probe clamp (M)
Part number 005-LASPROCLAS-M	Small laser probe clamp (S)



BTL-CPMOTION

CONTINUOUS PASSIVE MOTION THERAPY

Continuous Passive Motion (CPM) is used during **the first phase of rehabilitation** following lower limb joint surgeries or traumas. The BTL-CPMOTION device continuously and repeatedly moves the joint through a controlled range of motion. It's the most gentle and efficacious **therapy increasing joint range of motion** after surgery.

INDICATIONS

- Hip and knee joint replacements
- Arthrotomies and arthroscopies
- Ligament reconstructions
- Fracture surgical treatments

PRACTICAL BENEFITS



HIGHLIGHTS

- MODULES**
- A single unit that allows for treatment of **all 3 leg joints**
- PARAMETERS**
- Precise real-time** patient's threshold angle setting
 - Faster movements** for improved therapy outcomes and/or decrease of therapy time
- THERAPY SETTING**
- Click system settings with **no manual tightening** needed
- ADDITIONAL FEATURES**
- Remote control with **touch screen**
 - Portable



PRODUCT SPECIFICATIONS

BTL CPMOTION

Model	BTL-CPMOTION™ K EASY	BTL-CPMOTION™ K PRO	BTL-CPMOTION™ K ELITE
Part number	P093.001	P093.002	P093.003
User interface	START/STOP remote control	Remote control with touch screen	Remote control with touch screen
Advanced therapy settings		•	•
Preset protocols		•	•
User-defined protocols		•	•
Ankle module		○	•
Ankle extension/flexion			25°/40°
Knee extension/flexion	-10°/123°		
Max. movement speed	380°/min		
Weight	11 kg	12 kg	14 kg
Standard accessories	START/STOP remote control	Remote control with touch screen	Ankle module, remote control with touch screen

• Standard | ○ Optional

TRACTION THERAPY

THE HELPING HAND IN MANUAL MEDICINE

Traction therapy is a known **alternative** to manual medicine that applies mechanical forces over the spine to relieve **chronic back pain**. The BTL traction therapy embraces a comfortable patient set-up with an **innovative belt system**, the setting of personalized therapy parameters, a sliding mechanism situated in the lower part of the traction couch for **optimum force transmission**, and automated overload detection.

INDICATIONS

Chronic low back pain

Chronic cervical pain



PRODUCT SPECIFICATIONS

BTL-6000 TRACTION THERAPY

Model	BTL-6000 TRACTION
Part Number	P096.001
User interface	5.7" colour touch screen
Modes	17
Traction force	0-100 kg
Traction speed	1-12 kg/s
Therapy time	1:00-99:59 min:sec
Hold time/Rest time	1-999 sec.
Standard accessories	Patient switch with holder, mounting kit

Optional accessories

Part number P096.010	Lumbar belt system
Part number P096.011	Cervical belt system
Part number T010.071-084	Stool with adjustable height
Part number T010.023	Half roll
Part number T010.024	Wedge
Part number P096.013	Wall mounting adapter for cervical traction in sitting position

BTL TRACTION COUCH EASY

Model	BTL-1300 TRAC
Part Number	T013.011
No. of sections	3
Weight	110 kg
Load capacity	170 kg
Electrically adjustable height of couch	min. 490 mm, max. 970 mm
Electrically adjustable pelvic tilt	
Manually adjustable head section	-30° — 55°
Manually adjustable armrests	
Specification	3-section/ 1-motor
Asymmetric therapy adapter	
Electric height adjustment	•
Hand switch	•
Standard width (cm)	70
Horizontally movable foot section	•
Breathing hole	•
Upholstered insert	○
Retractable castors	○
Foot switch for height adjustment	○
Frame switch for height adjustment	○
Face pad	
Axilla posts	
Stool with adjustable height	○

• Standard | ○ Optional

CONSULTING ROOM EQUIPMENT

COUCHES AND ACCESSORIES

Designed with both the patient and a medical provider in mind. Our couches are available in a large range of upholstery colours and accessories, featuring **superior stability and durability**, high-quality artificial leather covers and heavy-duty motors. We also provide **exercise accessories**.



Electrically adjustable



Hydraulic



Fixed height

White Part number T010.030		Light blue Part number T010.040		Vanilla Part number T010.048		Red Part number T010.035		Spring Green Part number T010.045	
Grey Part number T010.031		Dark blue Part number T010.041		Yellow (saffron) Part number T010.033		Wine Part number T010.036		Light green Part number T010.037	
Grey-blue Part number T010.039		Navy Blue Part number T010.049		Orange Part number T010.034		Beige Part number T010.032		Dark Green Part number T010.038	

Couches accessories



Breathing hole



Gas-spring head section adjustment



Sanitary paper holder



Retractable castors
Frame switch



Hand switch

COUCHES SPECIFICATIONS

Model	ELECTRICALLY ADJUSTABLE BTL-1300							HYDRAULIC BTL-1300	FIXED HEIGHT BTL-1100	
	2-section 1-motor	3-section 2-motors	4-section (split head section) 1-motor	5-section 2-motors	6-section 2-motors	Bobath (1-section & 2-section) 1-motor	Basic 2-section 1-motor	Basic 3-section 2-motors	Basic mechanical couch 2-section hydraulic movement	2-section fixed height
Part number	T013.000	T013.003	T013.023	T013.004	T013.022	T013.005 (1-sec) T013.012 (2- sec)	T013.013	T013.018	T013.030	T011.160
Electric height adjustment	•	•	•	•	•	•	•	•	mechanical adjustment	
Electric mid-section adjustment		•		•	•			•		
Hand switch	•	•	•	•	•	•	•	•		
Gas-spring head section adjustment (backrest adjustment in case of BTL-1300 Bobath)	•	•	•	•	•	(2-section)	•	•	•	•
Standard width (cm)	70	70	70	70	70	90	70	70	70	70/70 (height)
Horizontally movable foot section: 15 cm										
Folding frame										•
Breathing hole	•	•	•	•	•		o	o	o	o
Face rest for couches with breathing hole	o	o	o	o	o		o	o	o	o
Retractable castors	o	o	o	o	o	o			o	
Retractable castors for BTL-1300 Basic							o	o	o	
Foot switch for height adjust.	o	o	o	o	o	o	o	o		
Frame switch for height adjust.	o	o	o	o	o	o				
Frame switch for height adjust. for BTL-1300 Basic							o	o		
Extended width: 80 cm	o									
Extended width of Bobath: 120 cm							o			
Gas-spring foot section adjustment/ sitting adjustment for BTL-1300		o		o	•					
Safety switch	o	o	o	o	o	o	o	o		
Sanitary paper holder	o	o	o	o	o	o	o	o	o	•
Stool with adjustable height										

HYDROTHERAPY SOLUTIONS

BODY CONTENTEMENT FIRST!

BTL baths and whirlpools combine clean, elegant shapes with high-quality materials and perfect workmanship to cover needs of **medical facilities, spas & wellness centres**.

BTL Hydrotherapy solutions include: full-immersion baths, underwater massage baths and baths for extremities.

OMEGA



Created for pampering & luxurious spa treatment

ALFA & DELTA



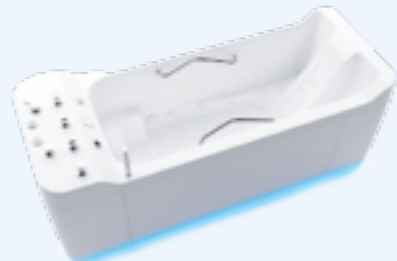
Smart cost solutions for medical spa facilities

BETA, ZETA & THETA



Designed to fit in hydrotherapy of extremities

KAPPA



Perfect for conventional underwater massage treatments



Technical specifications available on request.



BTL ROBOTICS

R-GAIT

GAIT RESTORATION AFTER STROKE

R-Gait is an **end-effector** type of robotic device that **re-educates and encourages the patient to walk in the most natural gait pattern**, even in the **first recovery stage following stroke**. R-Gait engages lower extremities and pelvic motions in all three anatomical planes with **dynamic body weight support**. **Flexible footplates** induce the extension of the metatarsal phalangeal joints just as during natural walking.

INDICATIONS

Stroke

Traumatic brain injury

Infantile cerebral palsy

Parkinson's disease

GAMIFICATION MODULE

R-Gait and its **gamified therapies** guide patients to physiological body-weight shifting, reduce gait asymmetry, and restore natural gait patterns. **Exportable gait reports** help you **track and evaluate patients' progress**.

Dynamic Joint Alignment Set corrects knee deformities so patients can walk in the most physiological pattern.



HIGHLIGHTS

- Flexible footplates with **pressure sensors & haptic feedback**
- **Gamification module** for enhanced therapy outcomes
- **Dynamic body-weight support** and free pelvic motion
- For adult and **pediatric** patients
- **Compact** dimensions and front-side patient entrance

PRODUCT SPECIFICATIONS

R-GAIT

Model	R-Gait Elite	R-Gait Pro
Part number	660-PO-M	660-PO-M
Max. Speed	3,6 km/h	3,6 km/h
Max. body-weight	175 kg	175 kg
Dynamic Body-weight patient support	•	•
Adjustable armrests	•	•
Patient modules	Pediatric, 80-120 cm Adults, 120-210 cm	Pediatric, 80-120 cm Adults, 120-210 cm
Harness	4 harness sizes (S, M, L, XL)	4 harness sizes (S, M, L, XL)
Control unit	10.5" tablet	10.5" tablet
Gamification module	•	•
Robotic interactive therapy/ mobilization	With settable patient participation 0-100%	With settable patient participation 0-100%
Active pelvis with amplitude	•	•
Dynamic Joint Alignment Therapy set	•	•
Spasticity detection	•	•
Settable haptic feedback	•	•
No. of pressure sensors	16	16
Exportable gait reports	•	•
patient database	•	•
Length x Width x Height	220 x 101 x 270 cm	220 x 101 x 270 cm

R-FORCE

ZERO GRAVITY

R-Force is the **ONLY** technology that enables **100% body weight support** for orthopedic, sports medicine, and neurological patients, who need to improve their walking capacities since the **first recovery stage**. With its pressurized **bag chamber**, R-Force deprives **up to 100%** of patients' real weight while providing them with simultaneous support when walking or running.

INDICATIONS

Rehabilitation following injury, surgery, or total joint replacement of lower extremities

Gait training and neuromuscular re-education in neurologic patients

Aerobic and sport-specific conditioning and muscle strengthening

Conditioning and muscle strengthening in geriatric patients

GAMIFICATION & REAL-TIME FEEDBACK

The **integrated wide-angle camera** provides a real-time walking sequence, so patients can easily correct themselves. **Motivational games** can improve patients' balance and walking ability. **Functional gait diagnostics** allows therapists to track patients' progress

The patient's walking patterns can be accurately recognized thanks to the **360° see-through bag**.



HIGHLIGHTS

- Training with **100% of body weight support**
- **Real-time** therapy feedback & gait diagnostics
- **Single-touch set-up** with electrical key locks
- **Safe & easy boarding** with the low boarding edge, handrails, and self-folding bag



PRODUCT SPECIFICATIONS

R-FORCE

Model	R-Force
Part number	805-POELITE-M
User interface	12.1" touch screen display
Zero gravity mode	•
Motivational games	•
Gait diagnostics	•
Patients database	•
Preset protocols	•
Encyclopaedia	•
Exportable patient report (PDF)	•
Body weight support	0-100%
Max. speed	25 km/h
Max. reverse speed	8 km/h
Treadmill inclination	0-15%
Patients handrails	•
360° see-through bag	•
Electrical key locks	•
Integrated wide-angle camera	•
Dual safety assessment (lanyard + harness)	•

R-LEAD

NEUROCOGNITIVE TRAINING FOR UPPER LIMBS

R-Lead is a **sensor-based upper limb and neurocognitive training** program for patients in the **advanced recovery phase**. An optical sensor detects the patient's activity and endorses **multidirectional movements** of hand, wrist, and arm. **Dynamic arm supports** allow for training in the absence of gravity. Neurocognitive therapy creates an engaging, **gamified environment** to challenge patients.

INDICATIONS

Stroke

Traumatic Brain Injury

Spinal Cord Injury

Cerebral Palsy

Parkinson's disease

PATIENT-DIRECTED UPPER LIMB TRAINING

Sensor-based training encourages patients' wrists and arms to **move in all possible directions**. A **gamified environment** promotes reaching movements. Therapy can be completed with cognitive training of attention, visual-spatial exploration skills, memory, and many more.



HIGHLIGHTS

- **Multidirectional movements** of upper limb
- **Dynamic arm supports**
- **Gamified environment** to challenge patients
- Training in **sitting & standing** positions



PRODUCT SPECIFICATIONS

R-LEAD

Model	R-Lead
Dimensions	160x150
Optical sensor	•
Movements detected	Fingers flexion/extension; Ulnar/radial deviation; Wrist flexion/extension; Pronation/supination; Arm movements (up/down, left/right, back/forth)
Table height	From 53 to 103 cm
Arm compensation	From 900 to 4800 grams
PC	All-in-one touchscreen
Customizable vocal guidance	•
Self-adapting difficulty level	•
Treatment of visuo spatial deficit	•
Gamification module	•
Patient reports	Exportable PDF and Excel file
Patient database	•

R-TOUCH

ALL-IN-ONE SOLUTION FOR HAND & ARM

The R-Touch product family is all about a **soft robotic glove** that can induce physiological finger movements and potentiate **neuroplastic changes**. The **gamified environment** creates an interaction between the patient and real objects to help them reach their maximum potential. Available in many versions, R-Touch continuously follows the patient through **every phase of upper limb recovery**.

INDICATIONS

Stroke

Traumatic Brain Injury

Spinal Cord Injury

Cerebral Palsy

Peripheral nerve damage

HAND MOBILIZATION

Robotic hand mobilization induces finger movements and allows for different pinches from the early recovery stage, even in bedridden patients. In advanced stages, patients manipulate real objects and perform **functional global movements** while sitting or standing.



Mirror therapy



Active-assisted hand training



Patient-directed upper limb training

HIGHLIGHTS

- **Multidirectional movements** of hand, wrist & arm
- **Dynamic arm supports**
- **Gamified environment** to challenge patients
- Training in **bedridden, sitting & standing** positions



PRODUCT SPECIFICATIONS

R-TOUCH

Model	R-Touch
Dimensions	160x150
Speed	From 6 to 20 mm/sec
5 electrical actuators	•
Table height	From 53 to 103 cm
Arm compensation	From 900 to 4800 grams
PC	All-in-one touchscreen
Size of the gloves	6 sizes, from XXS to XL
Modular composition of the glove (length and width of glove fingers)	•
Treatment of spasticity	Up to level 3 of Modified Ashworth Scale
Accessory for wrist stabilization	• (optional splint)
3D animation	• (customizable effects)
Customizable vocal guidance	•
Proprioception exercises	•
Gamification module	•
Patient reports	Exportable PDF and Excel file
Patient database	•

Features overview	R-LEAD	R-TOUCH EASY	R-TOUCH LEAD	R-TOUCH PRO	R-TOUCH ELITE
Hand mobilization		•	•	•	•
Mirror therapy				•	•
Active-assisted hand training				•	•
Patient-directed upper limb training - hand gamified therapy			•	•	•
Patient-directed upper limb training - wrist and arm gamified therapy	•		•		•
Functional exercises with real objects		•	•	•	•
Neurocognitive training	•		•		•
Action Observation Therapy		•	•	•	•
Transportable		•			
Lying position		•			
Sitting and standing position	•	•	•	•	•
C-shaped height-adjustable table	•		•	•	•
2 dynamic arm support systems	•		•	•	•
Adults and children	•	•	•	•	•
Patient reports	•		•	•	•
Interface and control panel	PC with touch screen	Laptop	PC with touch screen	PC with touch screen	PC with touch screen
Space requirements (cm)	160x150	120x60	160x150	160x150	160x150





The following marking stands for different groups of one or more CE-marked medical devices: R-Lead consists of Gloreha Aria; R-Touch Easy consists of Gloreha Professional 2; R-Touch Lead consists of Gloreha Professional 2 and Gloreha Aria; R-Touch Pro consists of Gloreha Professional 2 and Gloreha Active Package; R-Touch Elite consists of Gloreha Professional 2, Gloreha Active Package, and Gloreha Aria. Leap Motion® Technology.

©2024 BTL Group of Companies. All rights reserved. BTL® is registered trademark in the United States of America, the European Union and/or other countries. The products, the methods of manufacture or the use may be subject to one or more U.S. or foreign patents or pending applications. Data on file.



