

R8 Rugged Tablet Expansion Module Smart Card Reader with RFID User's Manual



Smart Card Reader with LF/HF RFID



Smart Card Reader with UHF RFID

Package Contents

If any of following items is damaged, please contact your retailer.

Smart Card Reader with
RFID module



or






Screw
(7+1+3)



Sponge



Expansion Module - Smart Card Reader with RFID Screws

Screw Name	Screw Type	Quantity	Torque
ISOT-M2.0X6L		7	2.0 ± 0.3 Kgf-cm
ISOT-M2.0X8L		1	2.0 ± 0.3 Kgf-cm
ISOT-M2.0X5L, D=3.4mm		3	2.0 ± 0.3 Kgf-cm



NOTE

The pictures are for reference only, actual items may slightly differ.

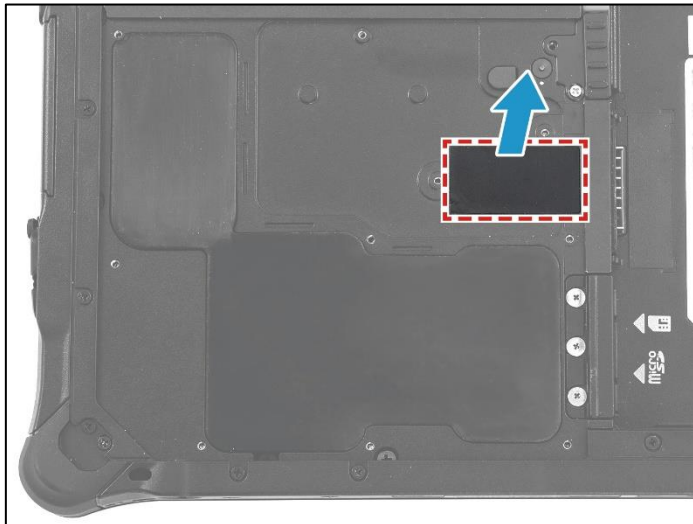
Installation

This section will guide you on how to install the expansion modules to your tablet PC.

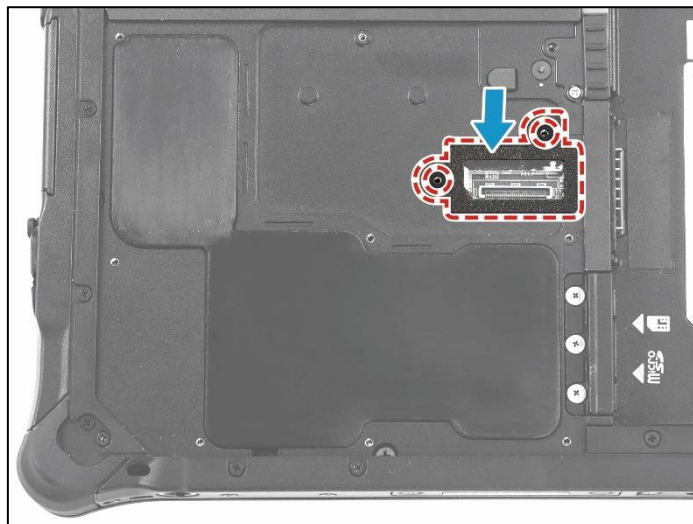
Note: Make sure to remove the battery before installing any type of expansion modules. For more information on how to remove/install the battery, please refer to the tablet PC service guide.

Installing the Expansion Module - Smart Card Reader with RFID

1. Remove the screw securing the mylar on the lower case.



2. Attach the expansion sponge to the lower case.

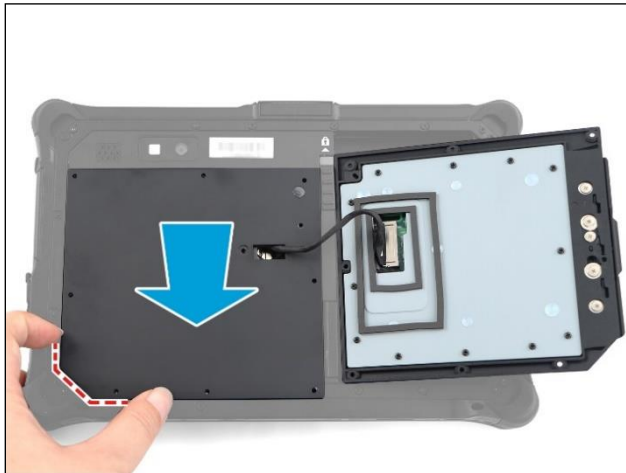


R8 Expansion Module - Smart Card Reader with RFID

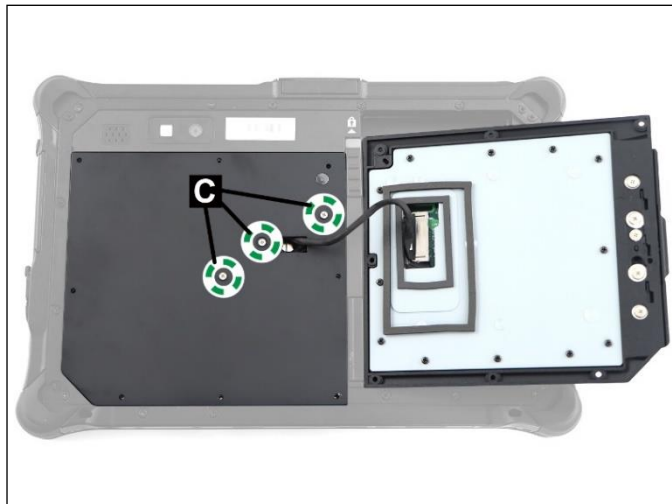
3. Connect the expansion module with smart card reader harness to the mainboard connector.



4. Place the expansion module with smart card reader bracket onto its slot on the lower case. Make sure the cut edge of the bracket is aligned properly with the lower case.

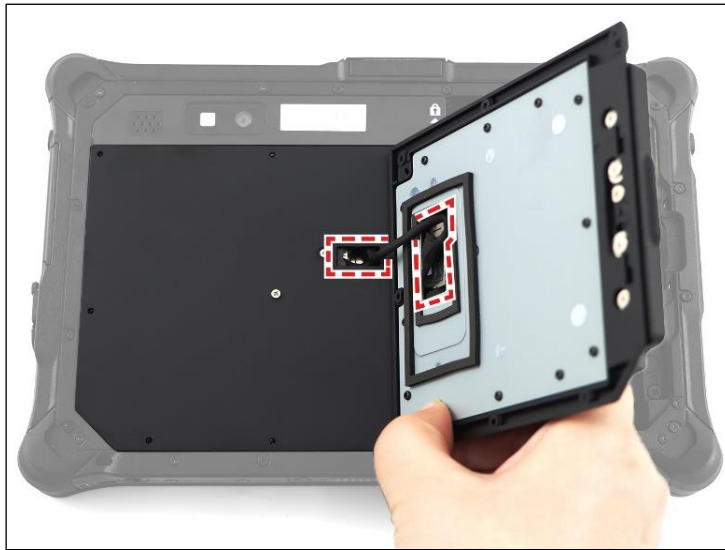


5. Attach the 3 screws to secure the expansion module with smart card reader bracket to the lower case.
 - ISOT-M2.0X5L, D=3.4mm (marked with C): 3 screw.

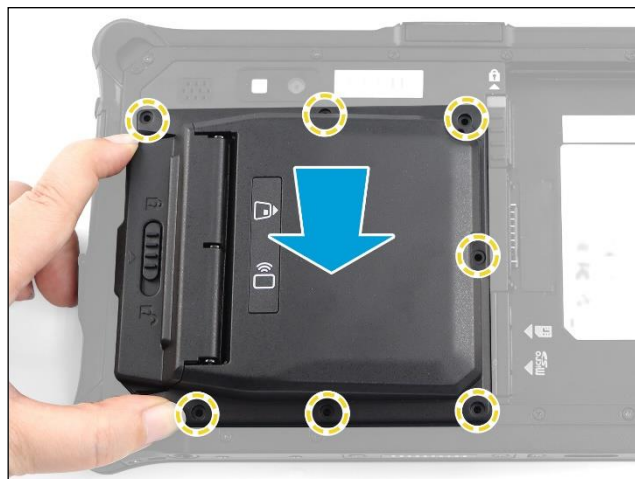


R8 Expansion Module - Smart Card Reader with RFID

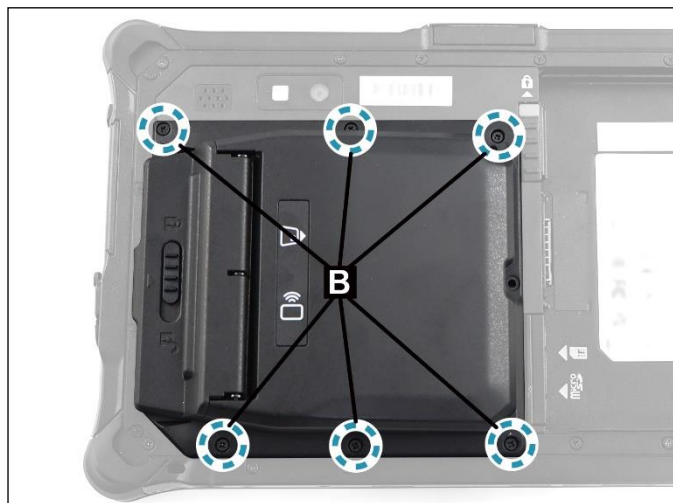
6. Route the expansion module with smart card reader cable as shown in the image below.



7. Align by the screw holes and then place the expansion module with smart card reader on top of its bracket.



8. Attach the 6 screws to secure the expansion module with smart card reader to the lower case.
 - ISOT-M2.0X6L (marked with B): 6 screw.



R8 Expansion Module - Smart Card Reader with RFID

- Slide the expansion module with smart card reader lock switch to the unlock position.

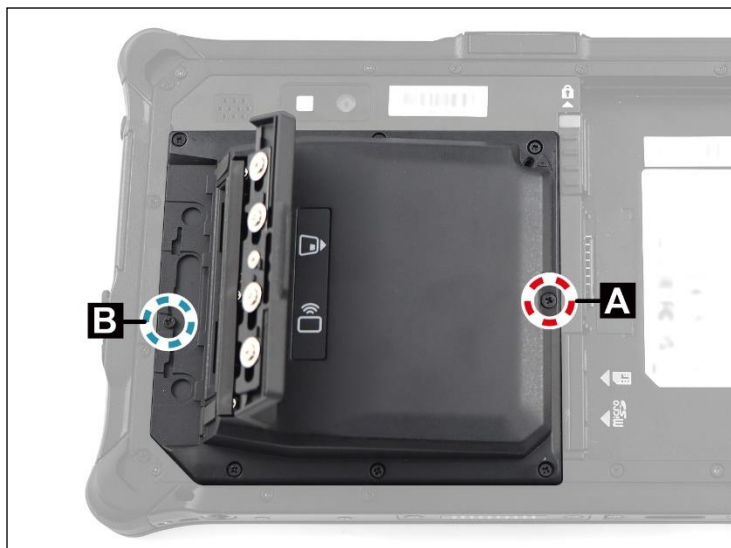


- Open the smart card reader door.



- Attach the 2 screws to secure the smart card reader to the lower case.

- ISOT-M2.0X8L (marked with A): 1 screw.
- ISOT-M2.0X6L (marked with B): 1 screw.



R8 Expansion Module - Smart Card Reader with RFID




12. Close the expansion module with smart card reader door.



13. Slide the smart card reader lock switch to the lock position.



Expansion Module - Smart Card Reader with RFID Screws

Screw Name	Screw Type	Quantity	Torque
ISOT-M2.0X6L		7	2.0 ± 0.3 Kgf-cm
ISOT-M2.0X8L		1	2.0 ± 0.3 Kgf-cm
ISOT-M2.0X5L, D=3.4mm		3	2.0 ± 0.3 Kgf-cm