



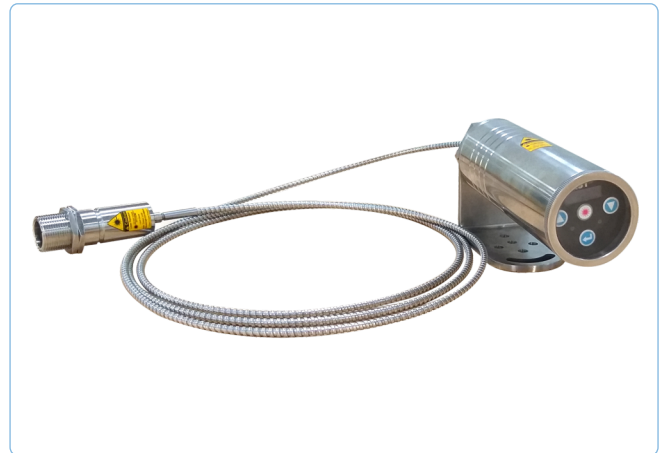
Highly Accurate On-line Single Color Infrared Fiber Optic Non-contact Pyrometers

CE 250°C to 3500°C

● SWIFT FO PL Series

SWIFT FO PL Series is a highly accurate and very fast digital single color IR Focusable pyrometer to provide high performance and low maintenance of non contact temperature measurement in demanding industrial and R&D environments.

The IR pyrometer has very fast response time, 10 µsec. The parameters can be selected via the key pads on the back panel. The settings are displayed on the OLED Display. In the measuring mode real time temperature is displayed. SWIFT FO PL series has focusable optics for optimal match of the instrument for various applications. It is equipped with digital output : ethernet and analog outputs 0/4 - 20 mA. Switching laser ON/OFF does not effect the measurement.



SWIFT FO PL Models

SWIFT 250 FO PL : 250°C - 2500°C, 1.6 µm

SWIFT 350 FO PL : 350°C - 3500°C, 2.0 to 2.6 µm

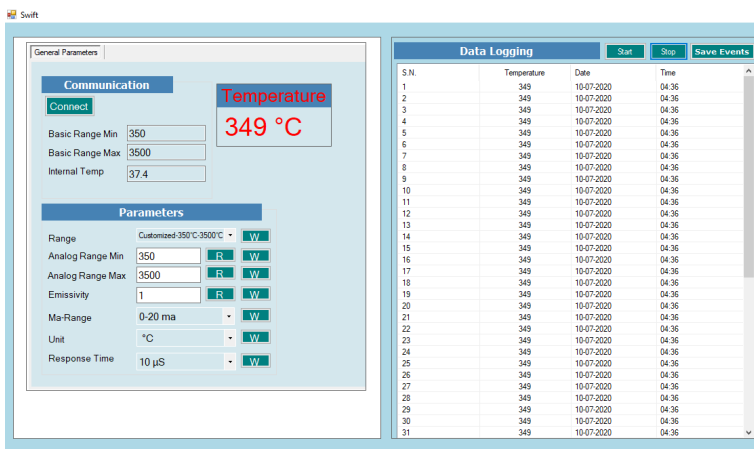
SWIFT 450 FO PL : 600°C - 2500°C, 1.0µm

Software "Swift 1.0.0"

AST "Swift" software is under standard scope of supply. It offers parameter setting, data logging and saving the data in .txt notepad format. Communication between the pyrometer and the software is implemented via a cable connected between the pyrometer and the PC RJ 45 port.

Some of the parameters adjustable via software are

- Emissivity, Response Time
- Analog Output
- Sub Range
- Unit of Temperature(°C/°F)



Features

- Wide temperature ranges from 250°C to 3500°C
- Fiber Optics
- Very Fast Response Time - 10 µsec
- Integrated OLED Display & Parameterizing Keys
- Laser targeting
- Analog output options 0...20mA, 4...20mA
- Spectral range 1.6 µm, 2.0 to 2.6 µm, 1.0µm
- Ethernet Communication
- User friendly PC software for communication
- Green LED for pyrometer status indication
- Red LED for Laser ON/OFF indication (PL)

Standard Scope of Supply

- Pyrometer with Fiber Optics, OLED Display & Parameterizing Keys
- Laser pilot light(PL)
- 2.5 mtr mono fibre optic cable
- Optical head OH(II)
- Analog output 4...20mA, 0...20mA
- Digital Interface Ethernet
- 5 mtr long connection cable with connector
- 1.5 mtr. Communication Cable
- Calibration certificate, Software & Operation manual

Optional

- Mechanical & Electrical Accessories
- Extra Cable Lengths


Applications

- Induction heating
- Welding
- Casting
- Forging
- Annealing
- Sintering
- Rolling mill
- Rotary kilns
- Pouring stream

Technical Specifications

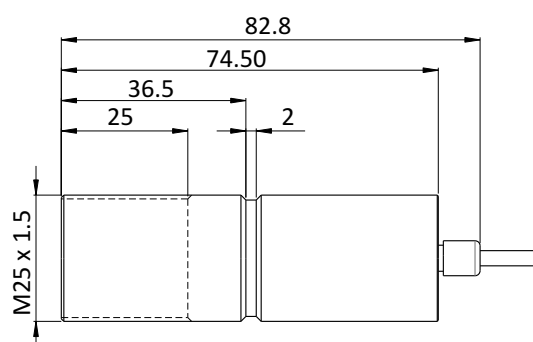
Model	SWIFT 250 FO PL	SWIFT 350 FO PL	SWIFT 450 FO PL
Temperature Range (Analog sub-range adjustable)	250°C - 1800°C 300°C - 2500°C	350°C - 3500°C	600°C - 2500°C
Spectral Range	1.6 µm	2.0 to 2.6 µm	1.0µm
Photo Detector Type	InGaAs	Extended InGaAs	Si
Distance to Spot Size Ratio	200:1 OH(II)		
Emissivity (ε)	0.1....1.0 adjustable (Single color mode)		
Response Time	10 µsec adjustable upto 10 sec		
Accuracy	± 0.5% of the measured value + 1°C		
Repeatability	0.2% of reading in °C + 1°C		
Sighting Options	Laser Pilot Light(PL)		
Analog Output	0-20mA, 4-20mA (User selectable)		
Digital Output	Ethernet		
Operating Temp. Range	Pyrometer 0°C.....70°C Optical head and Fibre Optic Cable upto 250°C		
Storage Temp. Range	-20°C...70°C		
Adjustable Parameters and Features via Software	Emissivity, Response Time, Analog Output, Analog Scale (Sub range), Unit Of Temperature(°C/°F)		
Adjustable Parameters and Features via Keypad	Emissivity, Response Time, Range Type, Analog Output, Analog Scale (Sub range), Unit Of Temperature(°C/°F), OLED Auto OFF time		
Power Consumption	Max 3.0 watt		
Laser Power	<1 m watt		
Protection Class	IP65		
Housing	Stainless Steel		
Isolation	Power supply, Digital output and Analog output are galvanically isolated against each other		
Operating Humidity	10-95%, Non-Condensing Conditions		
Weight & Dimensions	1200g Dia= Ø 56mm; Length=199.5mm		

Spot Sizes

Fixed Optics		SWIFT 250 FO/PL	SWIFT 350 FO/PL	SWIFT 450 FO/PL
Optical Head	Working Distances (mm)	Spot Sizes(mm) 250°C - 1800°C/ 300°C - 2500°C	Spot Sizes(mm) 350°C - 3500°C	Spot Sizes(mm) 600°C - 2500°C
 Optical Head - II	90	0.5	0.5	0.5
	200	1.0	1.0	1.0
	600	3.0	3.0	3.0
	4500	23	23	23
	Aperture(mm)	18.0 (250°C 1800°C) 11.0 (300°C 2500°C)	18.0	18.0

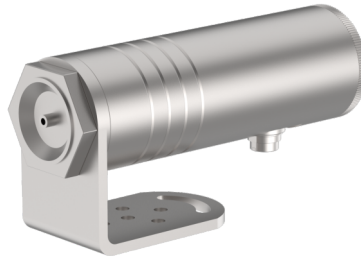
Pyrometer Drawing

OH2



* All Dimensions in mm

We measure accurate temperature in extreme conditions



Pyrometer with Mounting Clamp (8500-04)

Accessories

Mounting Clamp (Pyrometer)
(Reference no: 8500-04)



Air Purge Unit for Optical Head II
Reference No. 8200 - 01



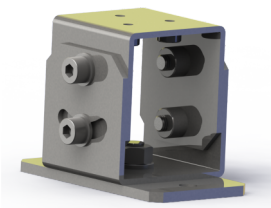
Adjustable Mounting for Optical Head II
Reference No. 8200 - 03



Temperature Indicator
(Reference no: 9000-01)



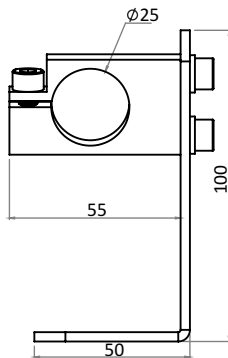
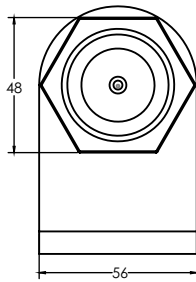
Adjustable Mounting Stand
(Reference no: 8000-07)



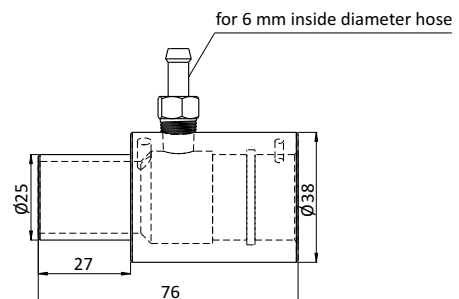
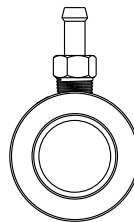
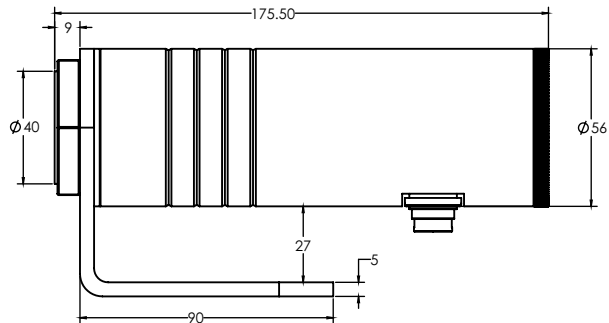
Power supply Input 110/230V AC
Reference No. 9000 - 02
Output 24 V DC, 0.7Amp.



Accessories Drawing



Adjustable Mounting for Optical Head II
(Reference no: 8200-03)



Air Purge Unit for Optical Head II
(Reference no: 8200-01)

Accurate Sensors Technologies Pvt. Ltd.
Misgav Industrial Park, Misgav 20174 Israel
Phone : +972-4-9990025, Fax : +972-4-9990031
E-mail : info@accuratesensors.com

Accurate Sensing Technologies Pvt. Ltd.
188A, B-169 (Part), B-188 (A), Road No. - 5, M. I. A.,
Madri, Udaipur (Rajasthan) - 313003
Phone : +91-294-3507736, Fax : +91-294-3507731
Email : sales@accuratesensors.com

AST
Accurate Sensors Technologies