

A large yellow triangle is centered in the upper half of the image. Several thin yellow lines radiate from its vertices. Below the main title, there is a large yellow triangle with its base at the bottom, and several smaller yellow triangles scattered around it.

Automatic METAL BALER

AMB-H1612
PRODUCT DETAILS



南通恩派特机械有限公司

- Product name, model no., usage, appearance, overview
- Technical Information
- Equipment Structure
- Hydraulic system
- Electrical System
- Advantages

- **Product Name:** Automatic light metal baler, aluminum chips baler
- **Model No.:** AMB-H1612
- **Usage:** to press non ferrous and light metal scrap, such as UBC, light aluminum scrap, scrap aluminum etc.
- **Appearance:** frame structure, oil cylinder (main cylinder, side cylinder, door cylinder) , hopper, hydraulic system, electrical system, conveyor(optional).
- **Overview:** Automatic metal baler with hopper, 250T main press force, bale size: 300x300mm.



Type	AMB-H1612	
The packet method	Push	
The nominal thrust	The pressure cylinder	2500KN
	Lateral pressure cylinder	1250KNx2
	The small door cylinder	500KN
Stroke	The pressure cylinder	1600mm
	Lateral pressure cylinder	1320mm
	The small door cylinder	320mm
Compression chamber size (L×W×H)		1600*1200*300mm
Packet block size (L×W×H)		300-300
The system pressure		25Mpa
Pump		HY250+HY250
A single cycle time		≤55s
Power		30KW+30KW
The motor speed (r/min)		980
Pump discharge (ml/r)		250+250
Tank capacity (L)		4500
Size of machine(mm)		6000X3500X2000
Weight of machine		About 9.5 tons
Operating mode		PLC Fully automatic one button operation. Continuous feed detection device and hopper

Yellow Hopper

Push material
Cylinder

Side main Cylinder

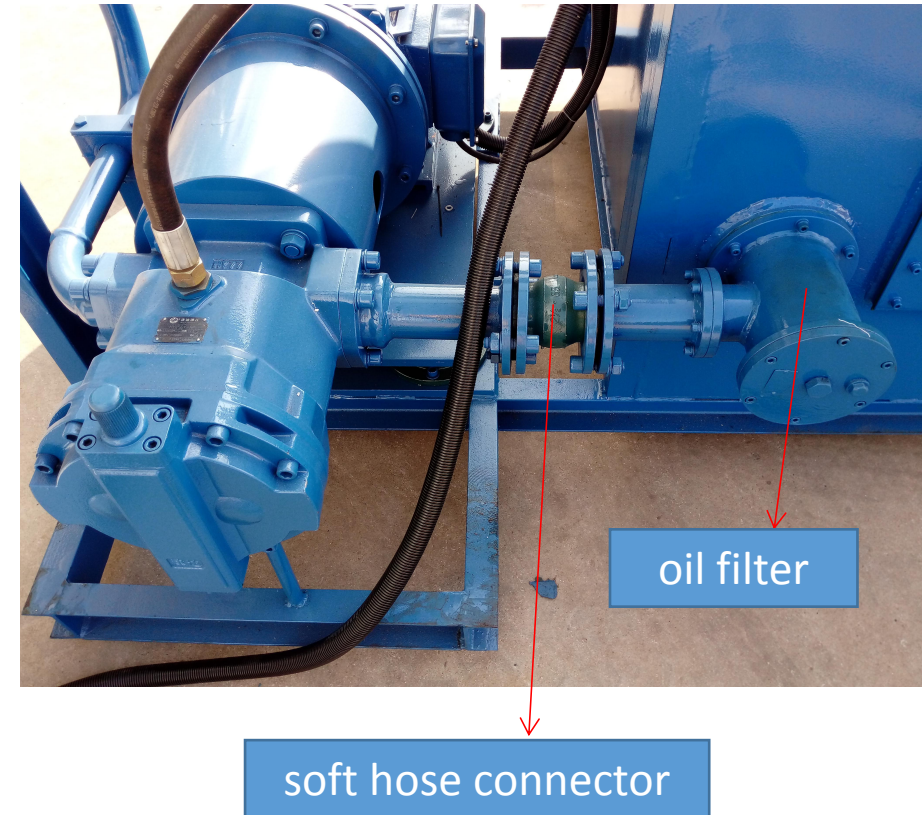
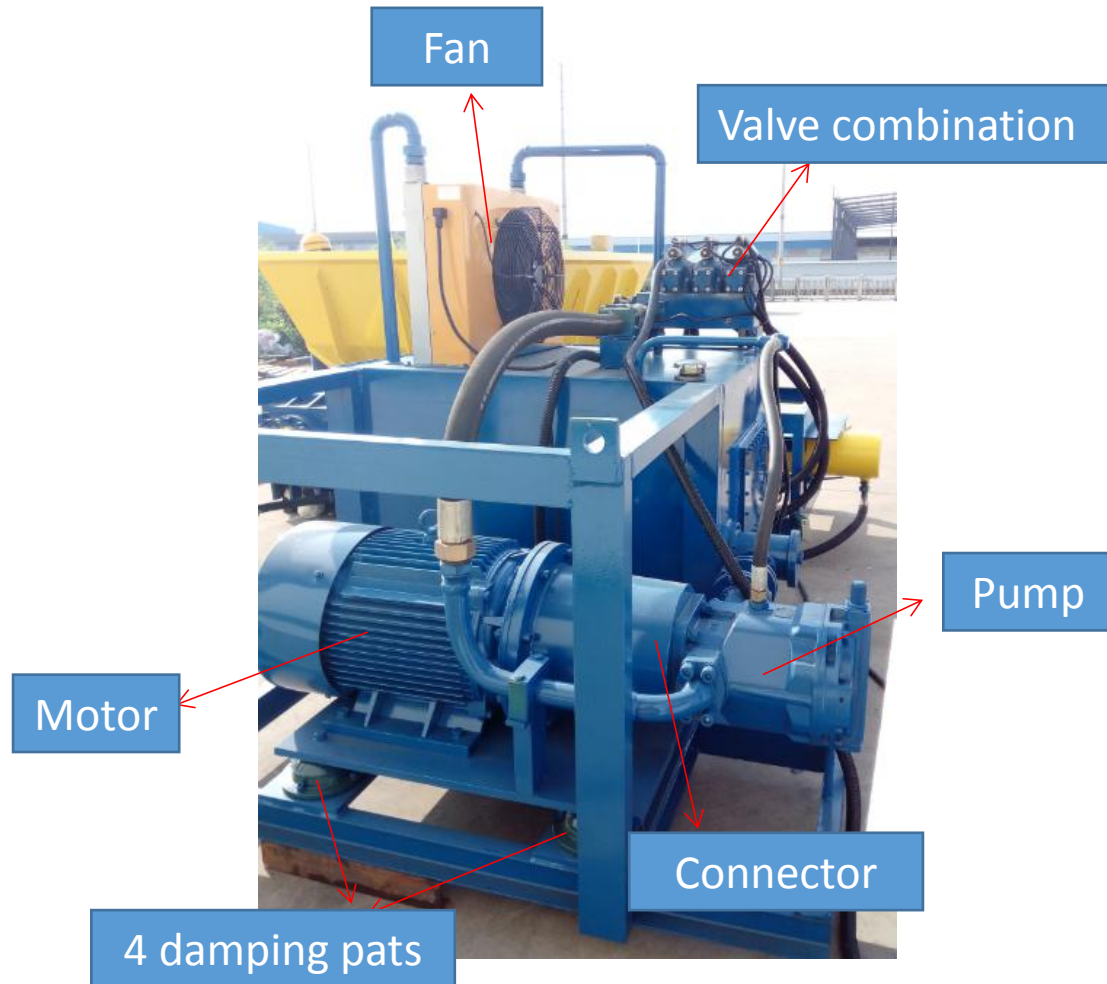
Magnetic conveyor



Hydraulic System

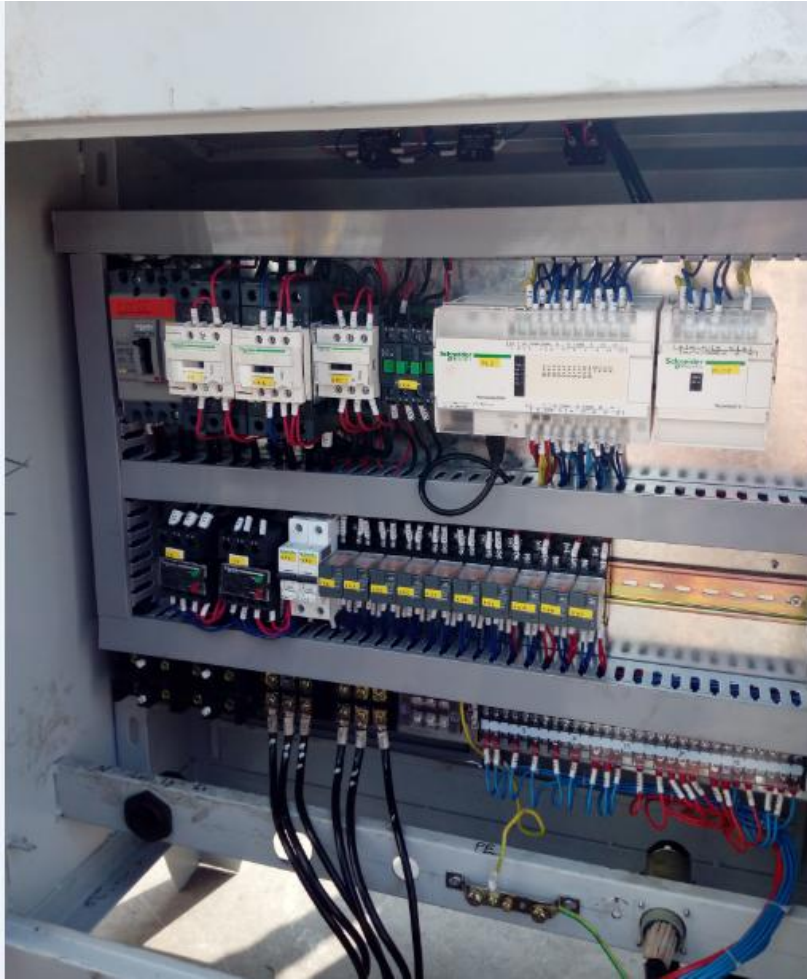
Door Cylinder

Automatic Metal Baler (Hopper Style)



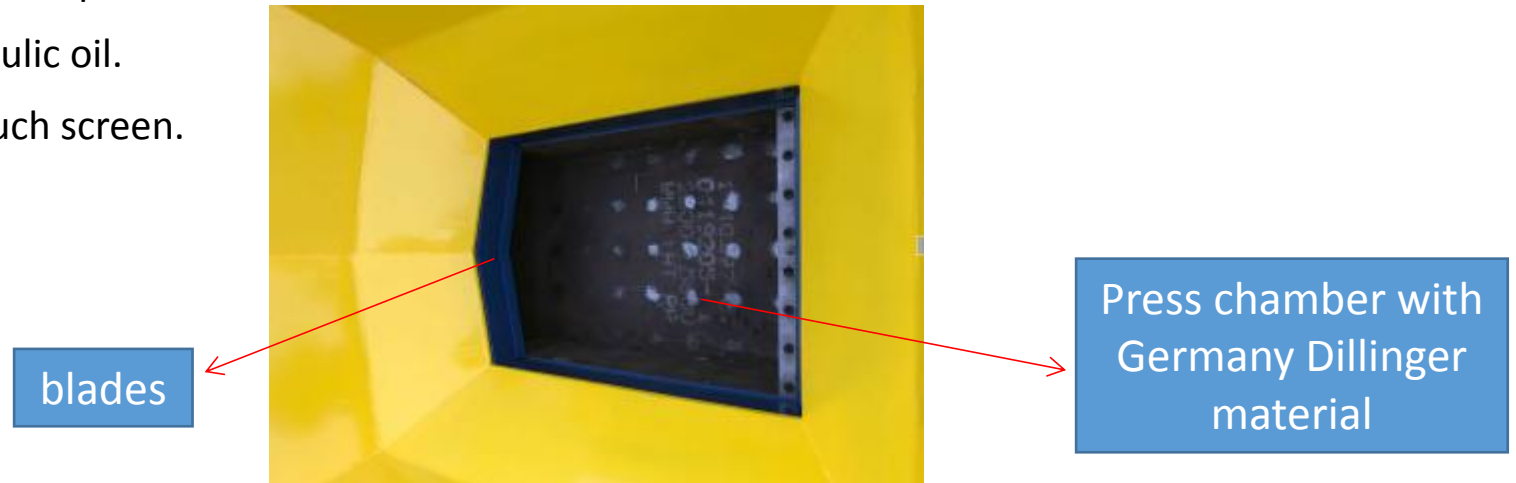
- The hydraulic system adopts the frame structure, oil pump is arranged on the side of the tank, the hydraulic oil in the tank is directly extracted, the hydraulic system is quickly supplied to the hydraulic valve group system to ensure the rapid advance of the hydraulic cylinder to do the piston movement;
- Equipped with oil filter;
- Using soft hose to connect the oil filter and the oil pump. When the machine is working, it can be shocked to protect the pump and motor.
- The motor base is equipped with four damping pads.





Schneider Electrical System

- Automatic mode: Use the key to start the power, press the reset button, and then manual or conveyor feeding materials, then press automatic operation button, till bale is out;
- Internal press chamber and master cylinder head are with Germany Dillinger material, high strength, high wear resistance.
- The front end of the feed chamber is equipped with a blade, and the side cylinder is pushed in place, and the excess waste can be cut off at the same time.
- Large-capacity hopper design, with the compression chamber connected straight down, not blocking material.
- Italy ATOS pressure sensor, you can set the pressure on the touch screen.
- The fan cooling system cools the hydraulic oil.
- Schneider's electrical system, PLC + touch screen.
- H-type hose connector, do not leak oil.





THANKS

 **ENERPAT**

南通恩派特机械有限公司