

Link-Seal

Mechanical Pipe Seal for Penetrations of any Size



Link-Seal® Mechanical Seals Model “O-S316” (Nitrile)

The Model “O” is resistant to oils, fuel and many solvents (gasoline, motor oil, kerosene, methane, jet fuel, hydraulic fluid, water, etc.), but it is not U.V. resistant so should not be left exposed. The O-S316 model uses stainless steel hardware, which makes it suitable for highly corrosive environments.

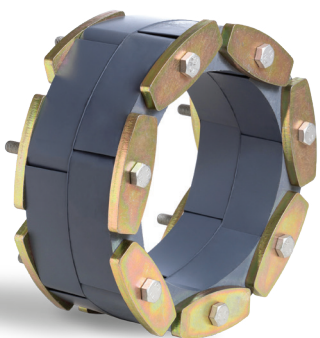


Color:	Green
Type:	Oil Resistant
Seal Element:	Nitrile (Green)
Pressure Plates:	Composite
Bolts & Nuts:	316 Stainless Steel
Temp. Range:	40 to +210F. (4.4C to 99C.)*

Link-Seal® Mechanical Seals Model “T” (Silicone)

The high temperature Link-Seal (Model-T) has a 2hrs fire rating according to Australian Standards 1530.4 and 4072.1 and can be used to provide a fire rating but also to provide a positive hydrostatic seal against water or gas at the same time.

If a fire rating is required when sealing against hydrocarbons please contact Projex Group for correct combinations and installation procedures.



Color:	Grey
Type:	High/Low Temperature
Seal Element:	Silicone (Grey)
Pressure Plates:	Steel Zinc Dichromate
Bolts & Nuts:	Steel with 2-part Zinc Dichromate & Proprietary Corrosion Inhibiting Coating
Temp. Range:	-67 to +400F. (-55 to +204C.)*

Link-Seal® Mechanical Seals Mechanical Seals, Model “L” (Low Durometer EPDM)

The Low Durometer Model “L” is excellent for use with thin wall metal pipe, applications using plastic, ceramic or glass pipe – or applications where the cylindrical object is fragile and may not withstand the compressing forces generated by a standard Link-Seal® Mechanical Seal.



Color:	Blue
Seal Element:	EPDM
Pressure Plates:	Composite
Bolts & Nuts:	316 Stainless Steel
Temp. Range:	-40 to +250F. (-40 to +121C.)*

Link-Seal® Mechanical Seals Model “C” (EPDM)

The Model “C” is suitable for use in water, direct ground burial and atmospheric conditions. It provides electrical isolation where cathodic protection is required. Because it uses stainless steel hardware it is excellent for applications such as chemical processing and waste-water treatment. EPDM rubber is resistant to most inorganic acids and alkalis and some organic chemicals (acetone, alcohol, ketones). It can be used in a cored or formed hole or in conjunction with Century-Line Sleeves, Cell-Cast Discs or WS Steel Sleeves.



Color:	Black
Seal Element:	EPDM
Pressure Plates:	Composite
Bolts & Nuts:	316 Stainless Steel
Temp. Range:	-40 to +250F. (-40 to +121C.)*

*= For all Link-Seal models, sustained operation near temperature limits may affect life expectancy

Link-Seal

Whenever a pipe penetration needs to be sealed, Link-Seals will get the job done.

Link-Seals are the most robust and versatile sealing method available and can be used in most applications and industries, including:

- ✓ Water, waste-water, and drainage
- ✓ Energy production
- ✓ Marine Situations including ships
- ✓ Oil & gas



www.projex.com.au | 02 8336 1666 | 1800 001 114
mail@projex.com.au

PROJEX
GROUP

 **Link-Seal**