

60 ton capacity ZCC600V



ZOOMLION

40
PRODUCTS

ZOOMLION

Zoomlion Heavy Industry Science & Technology Co.,Ltd.
Add: No.677, Lugu Road, Zoomlion Industrial Park, Changsha, Hunan, China, 410205
Copyright©2021 Zoomlion. All rights reserved. Reproduction and copying of any part of contents is not allowed for any purposes without Zoomlion's approval.



Product specifications are subject to change without notice and obligation. The photographs and/or drawing in this document are for illustrative purposes only. Please consult your local ZOOMLION dealer for more information.
website:en.zoomlion.com 2020.01.19

VISION CREATES FUTURE

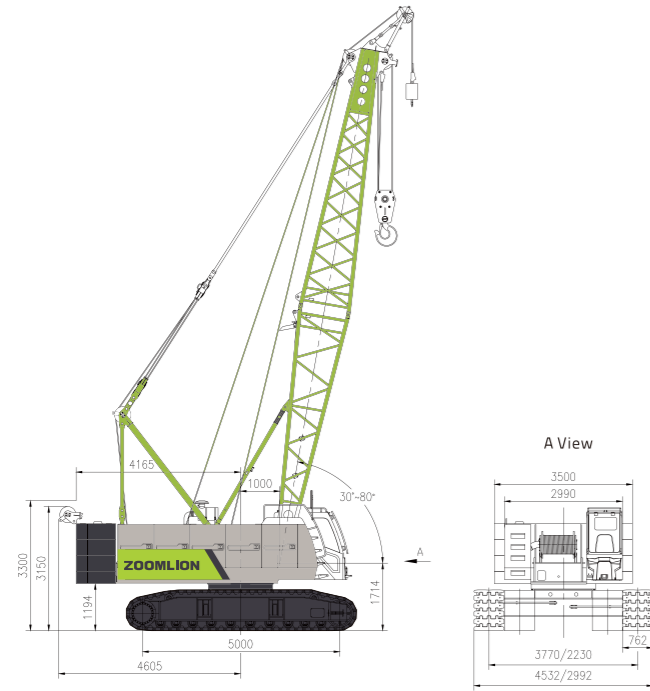
CONTENTS

ZCC600V DIMENSIONS	01
ZCC600V TECHNICAL FEATURE	01
ZCC600V BOOM COMBINATION	02
ZCC600V TRANSPORT DIMENSIONS AND WEIGHTS	03 / 06
ZCC600V TECHNICAL DESCRIPTION	07
ZCC600V LIFTING PERFORMANCE	08 / 12



DIMENSIONS

Basic machine with undercarriage



Operating weight

The operating weight includes the basic machine with crawlers, 2 main winches including wire ropes (185m and 130m) and 52m main boom, consisting of FA-frame, boom foot (6.5m), boom head(6.5m),17.4 t rear counterweight , and 60t hook block.

Total weight ----- approx.49.5t

Equipment

Main boom Max. Length ----- 52m

Fixed jib ----- 7-15m

Max. combination ----- main boom43 m

----- fixed jib 15m

Max. lifting moment ----- 222t.m

Max. lifting capacity on fixed jib ----- 12t

TECHNICAL FEATURE

High working efficiency

- Single rope speed of H1 and H2 reaches 145m/min (the 3rd layer).
- The optional free-fall winch helps to improve the efficiency of hoisting.

Optimization in transport and dismantling

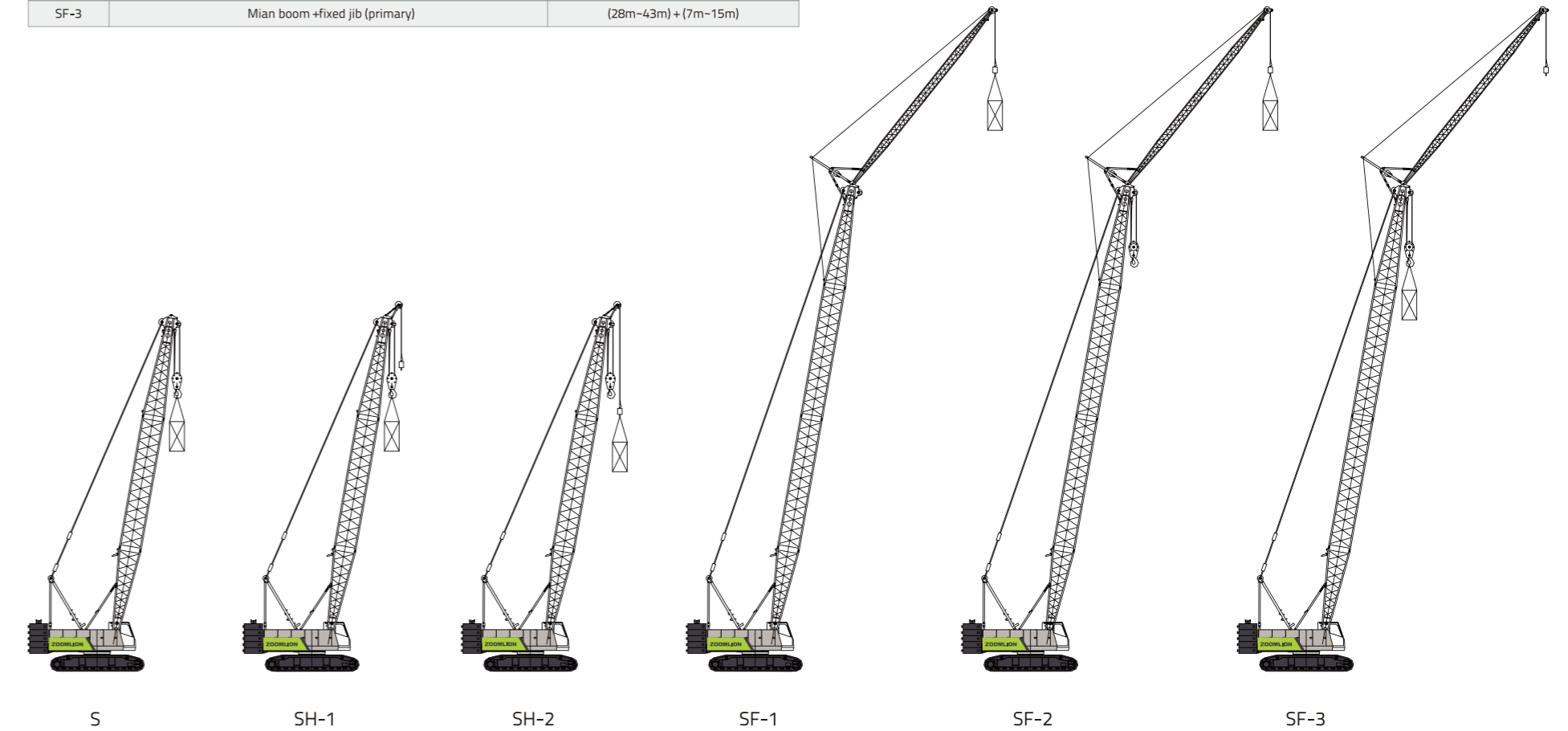
- Tracks are extendible. Max.width of whole machine in transportation is 3m
- The weight of a single counterweight plate shall not exceed 5.1t. A small auxiliary crane can help to finish the assembly.

Driver comfort

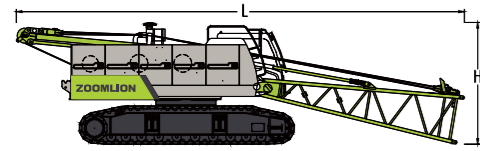
- The new cabin design sets new standards in terms of ergonomics and safety. Adjustable crane operator seat,adopts 10.4 inch touch sreen and camera monitor with excellent visibility with perfect all-round vision.

BOOM COMBINATION

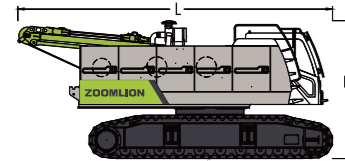
Code	Operating mode	Boom combination
S	Main boom	13m-52m
SH-1	main boom+tip boom (primary hook)	13m-52m
SH-2	main boom+tip boom (auxiliary hook)	13m-52m
SF-1	Main boom+fixed jib (auxiliary hook,without primary hook)	(28m-43m) + (7m-15m)
SF-2	Main boom+fixed jib (auxiliary hook with primary hook)	(28m-43m) + (7m-15m)
SF-3	Mian boom +fixed jib (primary)	(28m-43m) + (7m-15m)



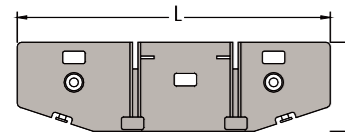
TRANSPORT DIMENSIONS AND WEIGHTS



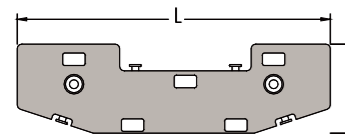
Basic machine1 (with pivot section)		1piece*
Length(L)	12100 mm	
Width (W)	2990 mm	
Height (H)	3300 mm	
Weight	30600 kg	



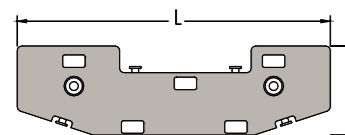
Basic machine 2		1piece*
Length(L)	7550 mm	
Width (W)	2990 mm	
Height (H)	3300 mm	
Weight	29670 kg	



Counterweight base		1piece
Length(L)	3500 mm	
Width (W)	1000 mm	
Height (H)	560 mm	
Weight	3300 kg	

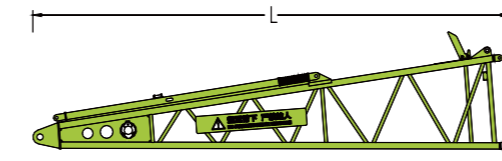


Counterweight plate		1piece
Length(L)	3500 mm	
Width (W)	1000 mm	
Height (H)	450 mm	
Weight	5100 kg	

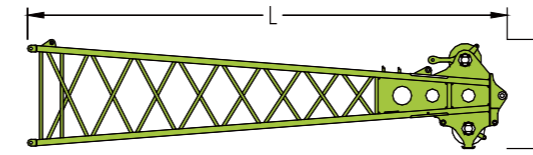


Counterweight plate		2pieces
Length(L)	3500 mm	
Width (W)	1000 mm	
Height (H)	450 mm	
Weight	4500 kg	

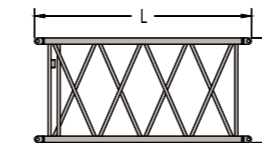
TRANSPORT DIMENSIONS AND WEIGHTS



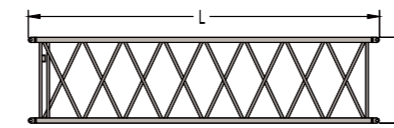
Main boom pivot section		1piece*
Length (L)	6670 mm	
Width (W)	1470 mm	
Height (H)	1640 mm	
Weight	930 kg	



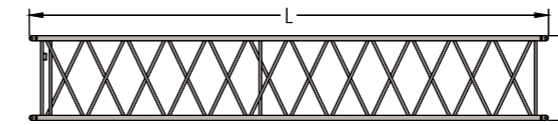
Main boom head		1piece
Length (L)	7130 mm	
Width (W)	1430 mm	
Height (H)	1630 mm	
Weight	830 kg	



Main boom intermediate section of 3m		2pieces*
Length (L)	3080 mm	
Width (W)	1430 mm	
Height (H)	1310 mm	
Weight	220 kg	

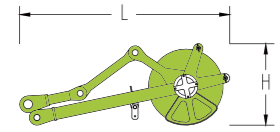


Main boom intermediate section of 6m		1piece*
Length(L)	6080 mm	
Width (W)	1430 mm	
Height (H)	1310 mm	
Weight	351 kg	

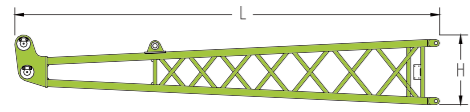


Main boom intermediate section of 9m		3pieces*
Length (L)	9080 mm	
Width (W)	1430 mm	
Height (H)	1310 mm	
Weight	551 kg	

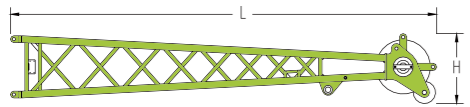
TRANSPORT DIMENSIONS AND WEIGHTS



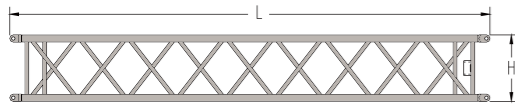
Tip boom	1 piece
Length (L)	1370 mm
Width (W)	590 mm
Height (H)	470 mm
Weight	120 kg



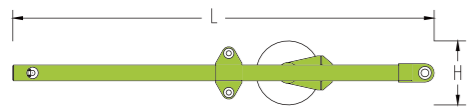
Fixed jib pivot section	1 piece*
Length (L)	3640 mm
Width (W)	570 mm
Height (H)	570 mm
Weight	160 kg



Fixed jib head	1 piece*
Length (L)	3820 mm
Width (W)	570 mm
Height (H)	570 mm
Weight	210 kg



Fixed jib intermediate section of 4m	3 pieces*
Length (L)	570 mm
Width (W)	570 mm
Height (H)	120 kg
Weight	



FA-frame	1 piece*
Length (L)	3230 mm
Width (W)	730 mm
Height (H)	410 mm
Weight	255 kg

TRANSPORT DIMENSIONS AND WEIGHTS



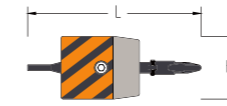
Load hook of 60T	1 piece*
Length (L)	1500 mm
Width (W)	660 mm
Height (H)	530 mm
Weight	655 kg



Load hook of 40T	1 piece*
Length (L)	1340 mm
Width (W)	490 mm
Height (H)	530 mm
Weight	400 kg



Load hook of 20T	1 piece*
Length (L)	1180 mm
Width (W)	420 mm
Height (H)	560 mm
Weight	315 kg



Load hook of 8T	1 piece*
Length (L)	830 mm
Width (W)	320 mm
Height (H)	320 mm
Weight	155 kg

Notes:

- 1.Components are presented in diagrammatic drawings that are not drawn to scale. Length is a boundary dimension.
- 2.Weight of packaging is not counted in the weight above, which might be different from the actual weight due to manufacturing error.
- 3.There might be improvements made on components listed above, resulting modifications in dimensions and weight. Actual products to be delivered shall prevail.
- 4.Numbers of components marked * are determined by the actual need.

TECHNICAL DESCRIPTION



Engine

Engine type----WEICHAI WP6G190E301
 Rated power----140kW/2000r/min
 Maximum output torque----860N.m/1300r/min
 Oil tank capacity-----400L
 Exhaust emissions: China national 3 emissin standares



Hydraulic system

Hydraulic pump: The main pump, a plunger pump, drives winches and the traveling mechanism. Dual gear pump is used for slewing and heat dissipation.
 Control: pilot proportional control hydraulic system. The motor of hoisting winches is a variable plunger pump. Two cross-shaped hydraulic control levers and a dual foot-operated traveling control valve are used for controlling different executive components.
 Hydraulic oil tank: 520L



Hoisting winch

Both the primary and the secondary hoisting winches are driven by an axial hydraulic variable-displacement piston motor through a built-in planetary reducer. Braking of the spring on winch motor is controlled by the balancing valve. The drum with a double-rope groove guarantees that rope of multiple layers will not intertwine together.

Main winch

Line pull-----Max.7T
 Rope diameter-----20mm
 Rope speed -----0-145m/min
 Rope length-----185m
 Both hoisting winches with free-fall function is available for an option.

Aux winch

Line pull-----Max.7T
 Rope diameter-----20mm
 Rope speed-----0-145m/min
 Rope length-----130m



Boom winch

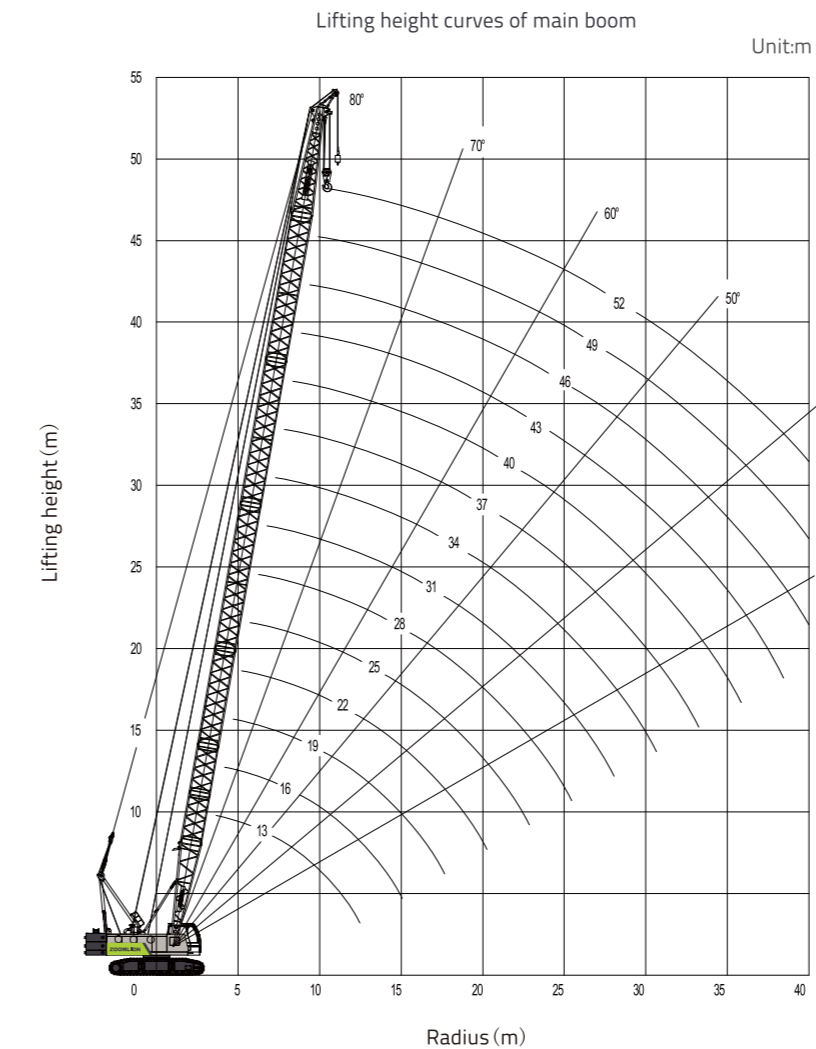
The derricking winch is driven by an axial piston motor through a built-in planetary reducer and brakes through the spring on the motor end.
 Cable drum lock: The winch is locked by ratchet wheel and ratchet pawl.
 Line pull-----Max.71KN
 Rope diameter-----20mm
 Rope speed -----0-82m/min
 Rope length-----100m



Swing

Slewing mechanism is composed of slewing reducer, motor, normally-closed brake, slewing bearing, etc. The superstructure can be rotated for 360° via the slewing ring which is driven by the pinion gear.
 Stepless speed regulation: 0-2.5r/min

LIFTING PERFORMANCE

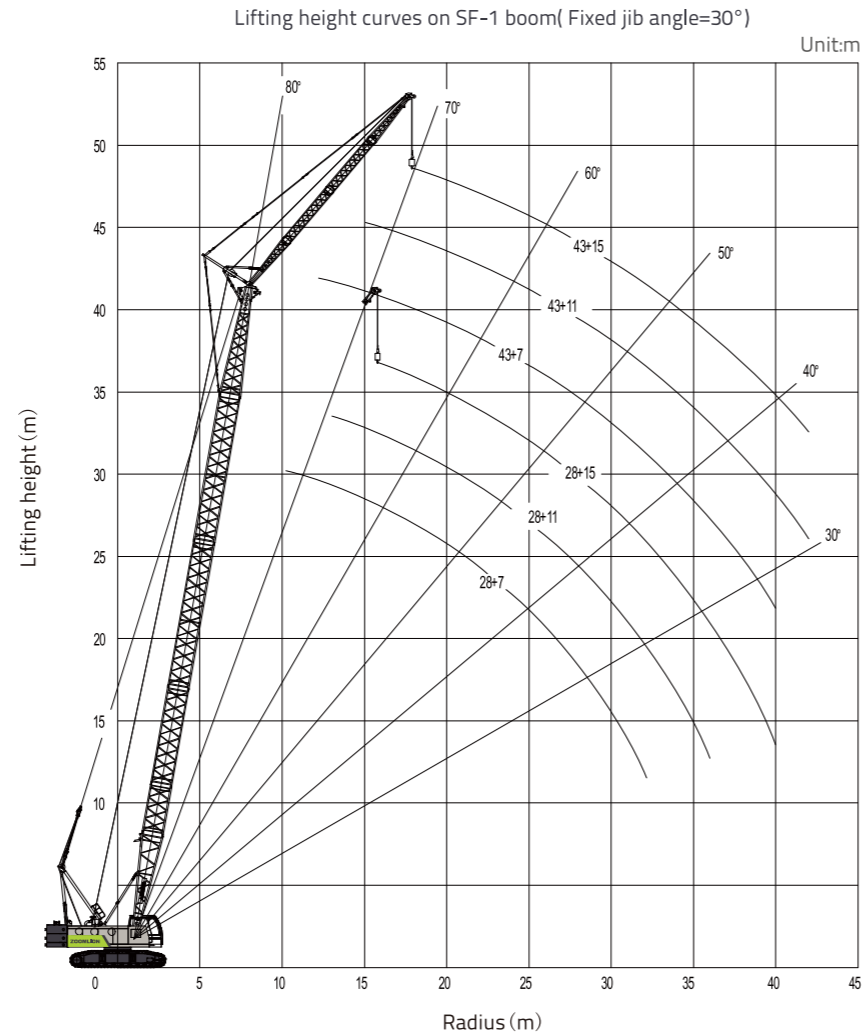
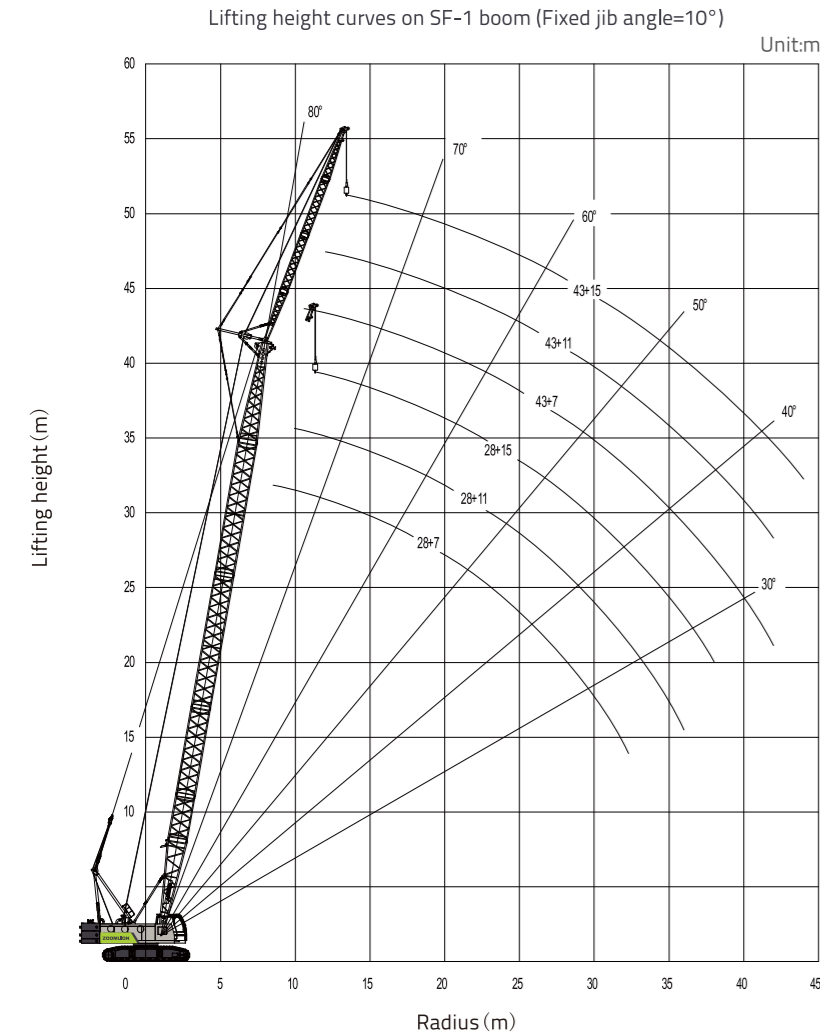


Unit:t

Radius (m)	Main boom length (m)														
	13	16	19	22	25	28	31	34	37	40	43	46	49	52	
3.7	60														
4	52.5														
5	40.4	39.1	38.4												
6	31.2	30.9	30.1	29.1	28.3										
7	24.7	24.6	24.5	24.2	23.4										
8	20.4	20.3	20.2	20.1	20	22.9	22.4	18.6	18.2						
9	17.5	17.4	17.3	17	16.9	19.6	19.1	16.2	15.9	15.4	15				
10	15.3	15	14.9	14.8	14.7	16.8	16.5	14.2	13.9	13.7	13.4	12.9	12.6		
11	13.4	13.3	13.2	13.1	13	14.6	14.5	12.6	12.4	12.1	11.9	11.6	11.3	10.8	
12	12.1	11.9	11.8	11.6	11.5	12.9	12.8	11.2	11.1	10.8	10.5	10.3	10	9.8	
14		9.8	9.5	9.5	9.5	11.4	11.3	9.2	9.2	9.1	8.8	8.6	8.3	8.1	
16			8.1	8	8	9.4	9.2	7.7	7.7	7.5	7.5	7.2	7	6.9	
18				6.9	6.8	7.8	7.8	6.5	6.5	6.4	6.2	6.2	6	5.7	
20				6	5.9	6.7	6.7	5.6	5.6	5.4	5.4	5.3	5.1	4.9	
22					5.1	5.8	5.7	4.9	4.8	4.7	4.6	4.5	4.4	4.3	
24						5.1	5	4.3	4.2	4.1	4	3.9	3.8	3.8	
26						4.4	4.4	3.8	3.8	3.6	3.5	3.5	3.3	3.3	
28							3.9	3.4	3.3	3.3	3.2	3	3	2.9	
30							3.5	3	3	2.9	2.7	2.7	2.6	2.5	
32									2.7	2.6	2.5	2.4	2.3	2.2	
34										2.3	2.2	2.1	2	1.9	
36											2	1.8	1.8	1.6	
38												1.7	1.6	1.5	1.4
40													1.4	1.3	1.2
42														1.2	1

LIFTING PERFORMANCE

Main boom with fixed jib configuration



LIFTING PERFORMANCE

Lifting capacity (SF-1 1/3)

Unit:t

Main boom length	28m						31m					
	7m		11 m		15 m		7m		11m		15m	
Angle	10°	30°	10°	30°	10°	30°	10°	30°	10°	30°	10°	30°
9	12						12					
10	12		12				12					
11	12	12	12				12		7			
12	10.9	11.2	11		7		10.8	11.1	7		7	
14	8.8	9	8.9	8.4	7		8.8	9	7	7	7	
16	7.4	7.5	7.5	7.7	7	6.4	7.3	7.5	7	7	7	
18	6.3	6.4	6.3	6.6	6.4	6.1	6.2	6.3	6.3	6.5	6.3	6
20	5.4	5.5	5.5	5.7	5.5	5.7	5.3	5.4	5.4	5.6	5.5	5.7
22	4.7	4.8	4.8	4.9	4.8	5	4.6	4.7	4.7	4.9	4.7	5
24	4.1	4.2	4.2	4.3	4.2	4.4	4.1	4.1	4.1	4.3	4.2	4.4
26	3.7	3.7	3.7	3.8	3.8	3.9	3.6	3.7	3.6	3.8	3.7	3.9
28	3.2	3.3	3.3	3.4	3.4	3.5	3.2	3.2	3.2	3.3	3.3	3.4
30	2.9	2.9	3	3	3	3.1	2.8	2.8	2.9	3	2.9	3.1
32			2.7	2.7	2.7	2.8	2.5	2.6	2.6	2.7	2.6	2.7
34			2.4	2.4	2.4	2.5		2.3	2.3	2.3	2.3	2.4
36					2.2	2.3		2	2.1	2.1	2.1	2.2
38					1.9	2			1.8	1.8	1.8	1.9
40										1.7	1.7	
42												1.5

LIFTING PERFORMANCE

Lifting capacity (SF-1, 2/3)

Unit:t

Main boom length	34m						37m					
	7m		11 m		15 m		7m		11m		15m	
Angle	10°	30°	10°	30°	10°	30°	10°	30°	10°	30°	10°	30°
10	12						7					
11	11.9		7				7					
12	10.7	11.1	7				7		7			
14	8.7	8.9	7		7		7	7	7		7	
16	7.2	7.4	7	7	7		7	7	7	7	7	
18	6.1	6.3	6.2	6.5	6.2	6	6	6.2	6.1	6.4	6.2	5.9
20	5.2	5.4	5.3	5.5	5.4	5.7	5.2	5.3	5.2	5.5	5.3	5.6
22	4.5	4.7	4.6	4.8	4.7	4.9	4.5	4.6	4.5	4.7	4.6	4.9
24	4	4.1	4	4.2	4.1	4.3	3.9	4	4	4.1	4	4.3
26	3.5	3.6	3.6	3.7	3.6	3.8	3.4	3.5	3.5	3.6	3.5	3.8
28	3.1	3.2	3.2	3.3	3.2	3.4	3	3.1	3.1	3.2	3.1	3.3
30	2.7	2.8	2.8	2.9	2.8	3	2.7	2.7	2.7	2.8	2.8	2.9
32	2.4	2.4	2.5	2.6	2.5	2.7	2.3	2.4	2.4	2.5	2.4	2.6
34	2.2	2.2	2.2	2.3	2.2	2.3	2	2.1	2.1	2.2	2.2	2.3
36	1.9	1.9	1.9	2	2	2.1	1.8	1.8	1.8	1.9	1.9	2
38			1.7	1.8	1.8	1.8	1.6	1.6	1.6	1.7	1.7	1.8
40			1.5	1.6	1.6	1.7			1.4	1.5	1.4	1.6
42					1.3	1.4			1.2	1.2	1.2	1.3
44						1.2					1.1	1.2
46											0.9	1

LIFTING PERFORMANCE

Lifting capacity (SF-1, 3/3)

Unit:t

Main boom length	40m						43m					
	7m		11 m		15 m		7m		11m		15m	
Angle	10°	30°	10°	30°	10°	30°	10°	30°	10°	30°	10°	30°
11	7						7					
12	7		7				7					
14	7	7	7		7		7	7	7		7	
16	7	7	7	7	7		6.7	7	6.7	7	6.7	
18	6	6.1	6	6.3	6.1	5.9	5.8	6.1	5.8	6.2	5.8	
20	5.1	5.2	5.2	5.4	5.2	5.6	5	5.2	5	5.3	5	5.5
22	4.4	4.5	4.5	4.7	4.5	4.8	4.3	4.5	4.3	4.6	4.3	4.7
24	3.8	3.9	3.9	4.1	3.9	4.2	3.7	3.9	3.8	4	3.8	4.2
26	3.3	3.4	3.4	3.6	3.5	3.7	3.2	3.4	3.3	3.5	3.3	3.6
28	2.9	3	3	3.2	3	3.2	2.8	2.9	2.8	3.1	2.9	3.2
30	2.6	2.6	2.6	2.8	2.7	2.9	2.4	2.6	2.5	2.7	2.6	2.8
32	2.3	2.3	2.3	2.4	2.3	2.5	2.1	2.2	2.2	2.3	2.3	2.4
34	1.9	2	2	2.1	2	2.2	1.8	1.9	1.9	2	1.9	2.2
36	1.7	1.8	1.8	1.8	1.8	1.9	1.6	1.7	1.7	1.8	1.7	1.8
38	1.5	1.5	1.5	1.6	1.6	1.7	1.3	1.4	1.4	1.5	1.4	1.6
40	1.3	1.3	1.3	1.4	1.3	1.5	1.2	1.2	1.2	1.3	1.2	1.4
42		1.1	1.1	1.2	1.2	1.3	1	1	1	1.1	1.1	1.2
44			1	1	1	1.1	0.8	0.8	0.9	0.9	0.9	1
46				0.8	0.9	0.9				0.8	0.8	0.8