



DRAGON A250

CNC PLASMA TUBE & PIPE CUTTER

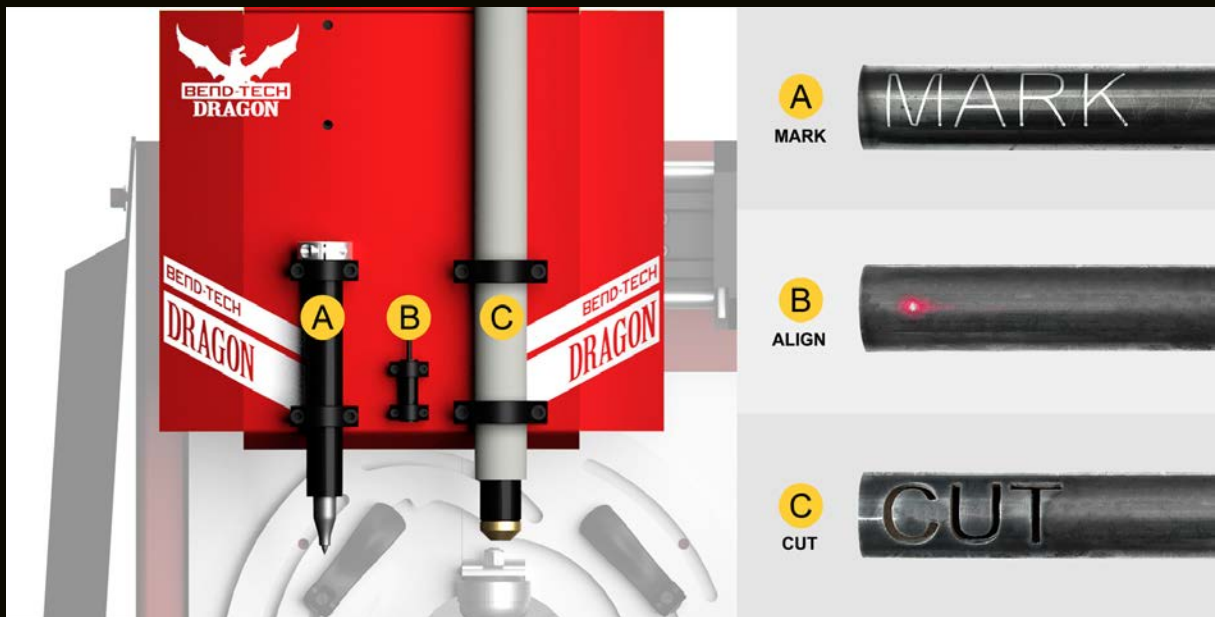
Complete CNC Plasma Tube & Pipe Cutter
with Integrated CAD/CAM Software





DRAGON A250

The Dragon A250 was created to meet the growing need for quality CNC machinery for the small business owner/operator. The Dragon A250 is the machine for passionate workers burning the midnight oil to get their orders done in time. If your shop is looking to take that next step forward, the Dragon A250 is for you.



Cutting & Marking Toolhead

The Dragon A250 Toolhead comes with a plasma torch mount, permanent marker with mount, and laser light with mount. The automatic CNC Toolhead plasma cuts and marks at the push of a button. Plasma is a fast and accurate method of cutting that is 1/10th the cost of a laser.

Built to Handle Your Material

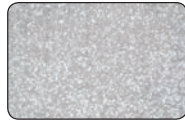
Material Types



Steel



Stainless Steel



Galvanised Steel



Aluminium

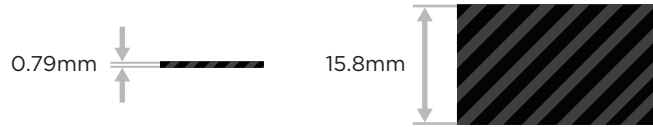
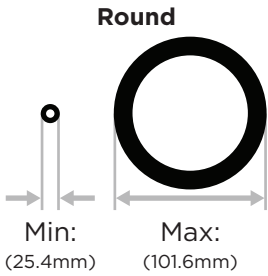


Black Pipe



Chrome Alloy

Material Thickness



Material thickness range of 0.79mm - 15.8mm

Material Weight



Full-Length Machine

Material Length

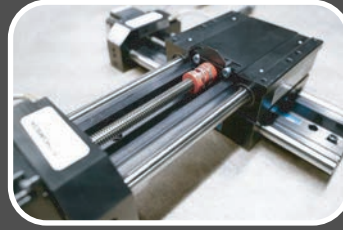
Up to 6.4m



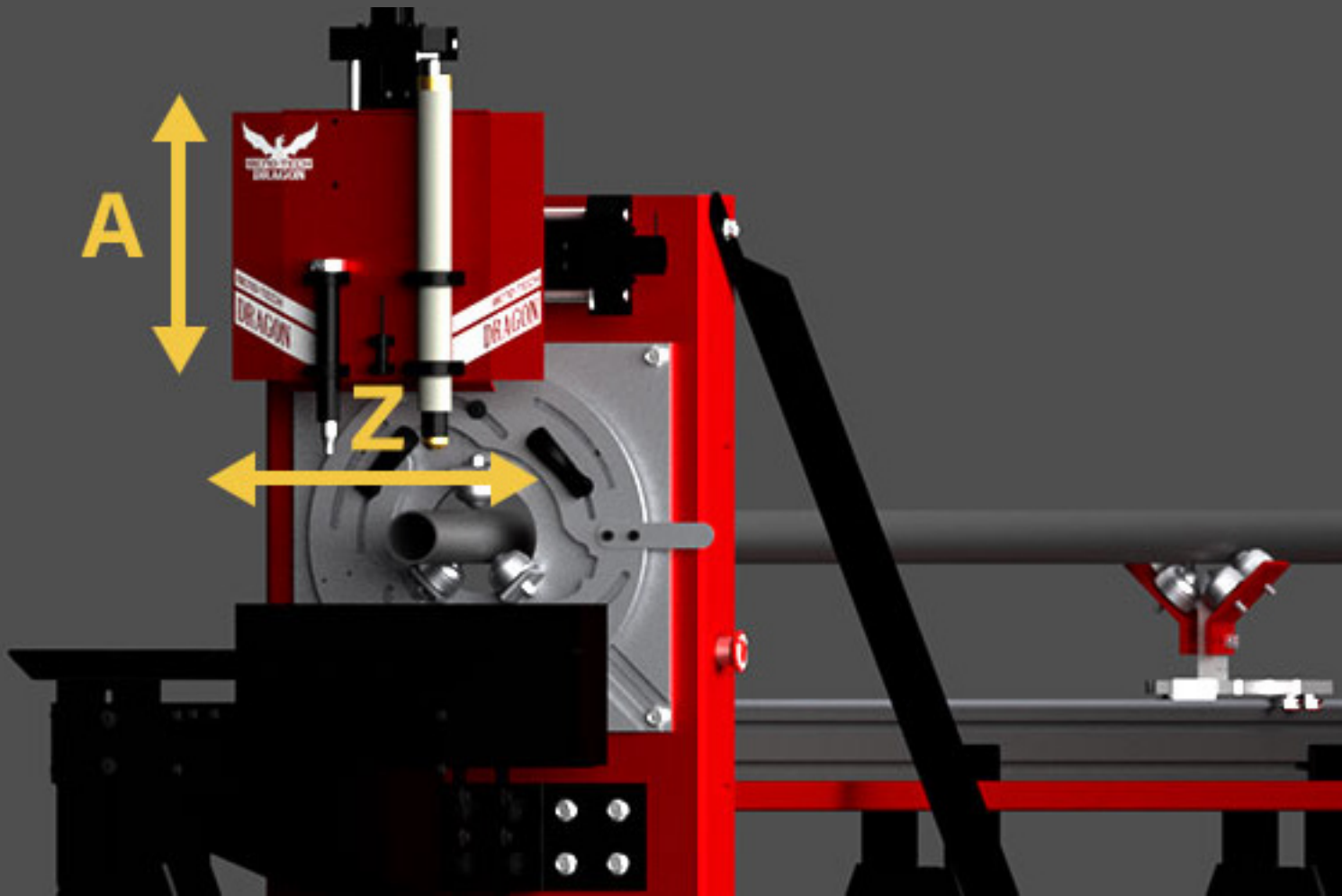
The Dragon A250 handles full 6400mm length material.

The chuck has a pass through ability for round material with a 50mm or less OD to accommodate longer pieces of material.

CNC Automation



A & Z-Axes: Lead screws move the Toolhead from side to side (Z-axis) and up and down (A-axis)

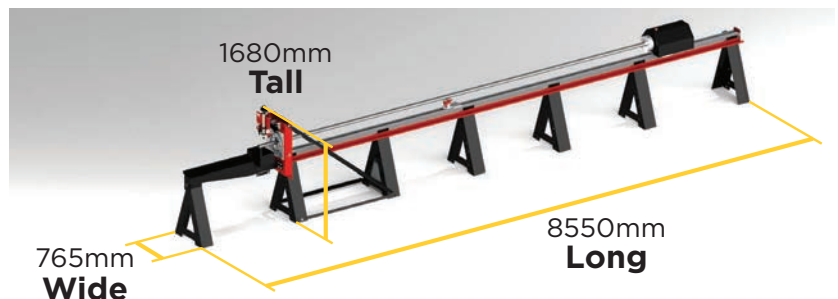


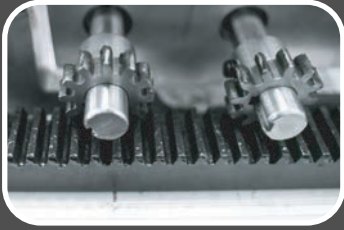
The four axes of movement allows any shape or profile to be cut out of round material. Complete automation with the Dragon A250 produces your parts faster and more accurately than hole saws, grinders, or other time-consuming manual methods.

NOTE: Optional Coolant System uses 3 modular output trays that attach to front of machine. The first tray adds 570mm to total length. Each additional tray adds 1.53 metres to total length.

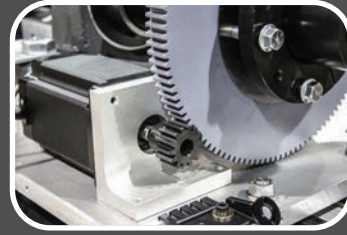
With all 3 trays installed machine will have an installed length of 12.18 metres.

Machine Footprint

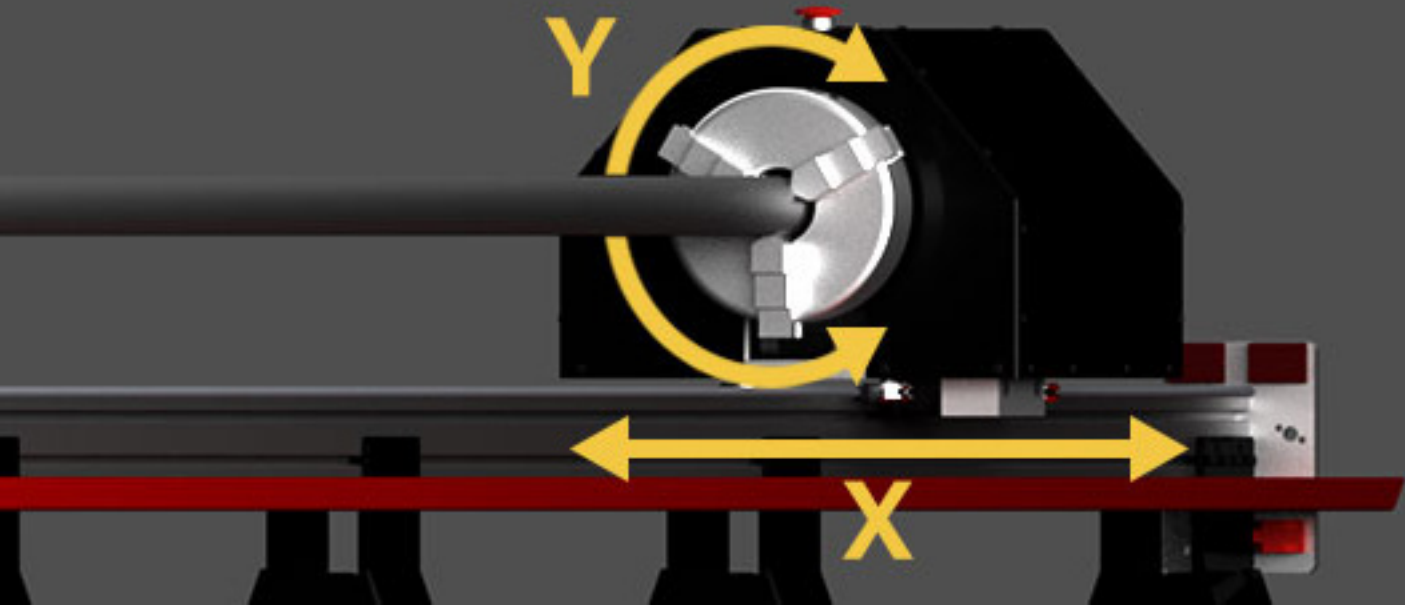




X-Axis: A rack and pinion drive system moves the material along its length.



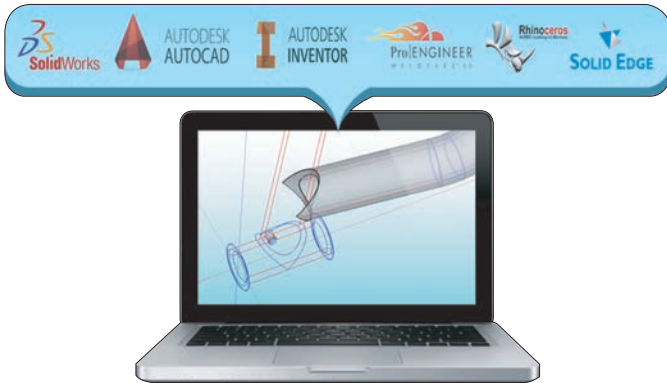
Y-Axis: A gear-driven system rotates the material.



Material Support Lift: An adjustable support to maintain levelness throughout the cutting process for accurate cuts.

Easy to Learn Software

The Dragon A250 Software comes standard with the purchase of a Dragon. Created for fabricators, the software eliminates a considerable amount of waste in time and mistakes and provides a smooth transition from design to finished part. Import 3D CAD designs or create designs with the Dragon CAD. The Dragon CAD imports STEP and IGES files.

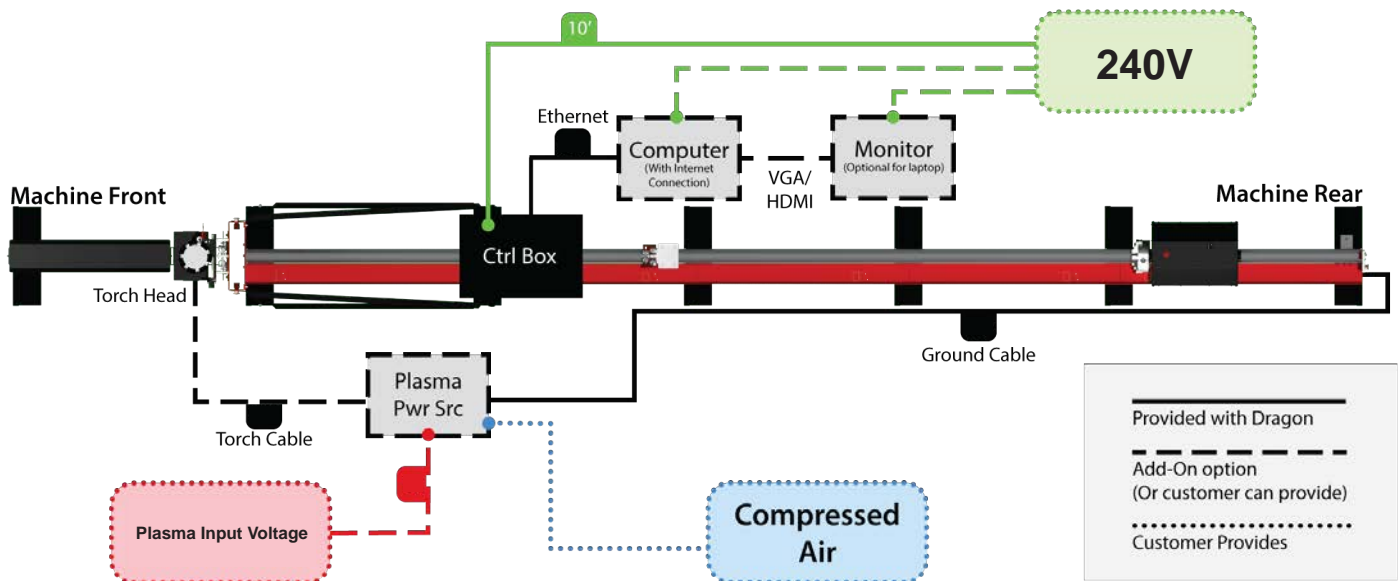


Excellence in Customer Support

The Dragon A250 is fully supported by our in-house team. Our customer support is available over the phone and via email during the regular business hours.



Shop Setup & Requirements



Dedicated Windows desktop or laptop with an ethernet port. (The computer running your Dragon machine cannot be running other machines. This can be purchased with the Technology Package as an add-on option.)

Active internet connection (for the activation of your Dragon Software and to receive important updates).

Plasma system with mechanized torch.

Two to four 240V outlets (one for the machine, one for the laptop or computer, one if a computer monitor is being used, and one if the optional coolant system is purchased).

An air compressor or inert gas with one line (For the plasma system).

Add-Ons

Hypertherm Powermax® Plasma Systems

The Dragon requires a mechanized plasma torch. There are three levels of plasma systems recommended for use on the Dragon: 45 amp, 65 amp, and 85 amp.



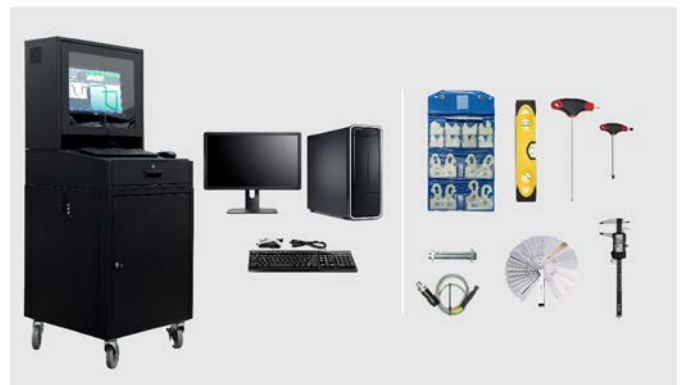
Material Coolant System (Optional)

The Material Coolant System recycles coolant through a continuous loop to increase cut quality, reduce slag amount, and decrease fumes from the plasma cutting. For companies that cut aluminum, stainless steel, or tubing with a small OD, it is highly recommended that you include a Material Coolant System in your purchase. The System includes a hose reel, tube plug set, modular trays, and coolant reservoir. (Pump not included.)



Technology Package (Optional)

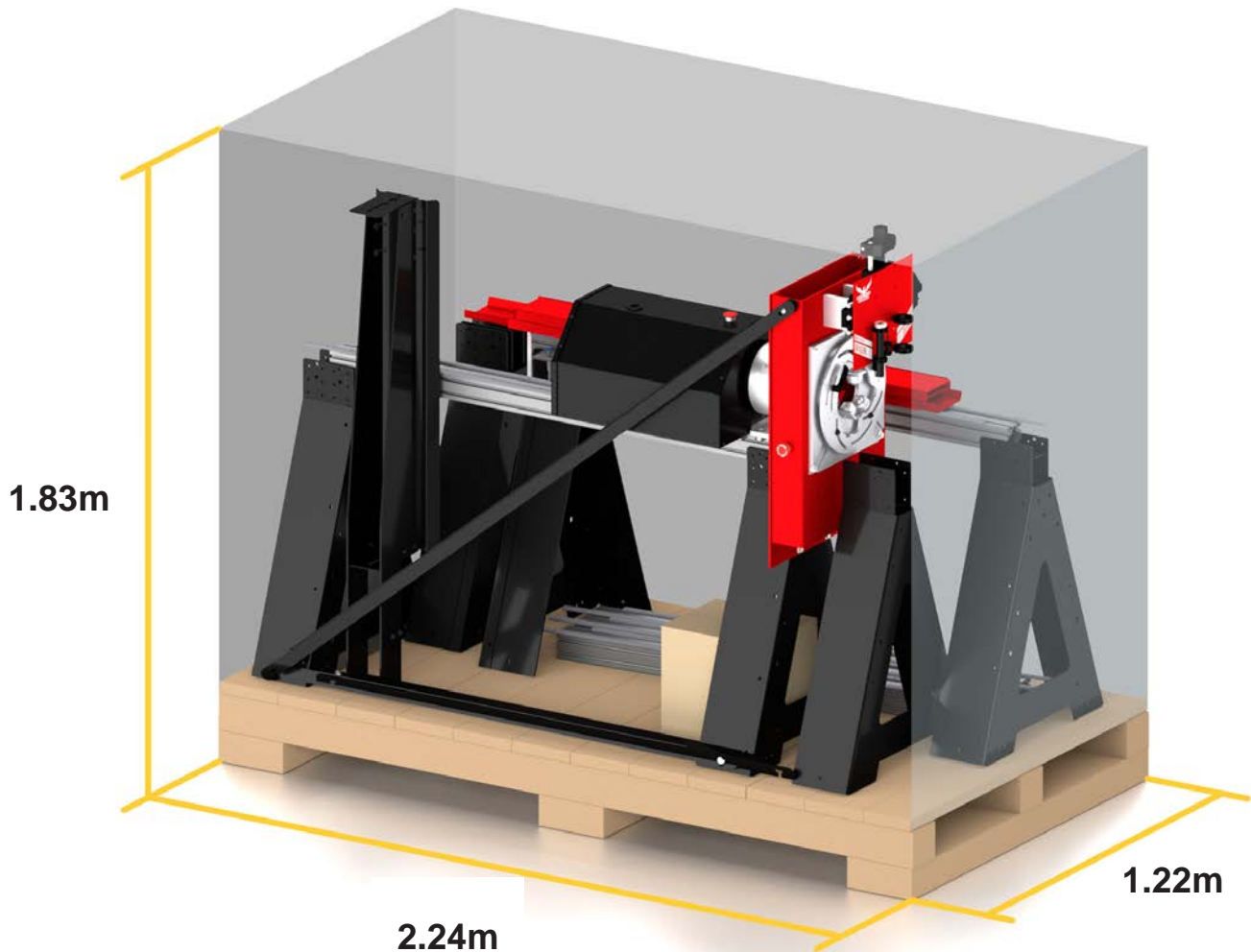
The technology package includes: an enclosed metal workstation cabinet on wheels that comes with a PC, a SITE License, computer monitor, keyboard, level, hex wrenches, digital caliper, extra proximity sensor, extra connector cable, and a feeler gauge.



Delivery

Shipping Crates

The Dragon A250 is shipped in a fully-enclosed wood crate. The crate secures your Dragon A250 throughout the shipping process.



Installation

The Dragon A250 is shipped partially assembled in one crate. The Dragon A250 comes with instructions on the proper setup and install process.

Warranty

Your Dragon A250 has a 12-month electronics and hardware limited warranty. Defective or faulty parts identified on the machine within this time period after delivery will be replaced at no charge and shipped to the location.

THE WARRANTY MAY BECOME VOID OR LIMITED IN THE EVENT THAT YOU MAKE HARDWARE CHANGES TO THE MACHINE.

Dragon A250 Software Maintenance

Included with the purchase of your Dragon, the 2 Year Maintenance Package has the latest updates and enhancements in the software and direct customer support over the phone, email, or computer.

Frequently Asked Questions

What is included in the purchase of a Dragon A250?

The Dragon A250 machine, marker, laser light, and the Dragon Software Suite. Check shop requirements and add on options for further purchasing items.

How does the initial setup process work?

Your Dragon A250 is shipped partially assembled and comes with a comprehensive assembly manual to instruct on how to properly reassemble the machine.

Where is the Dragon A250 made?

Your Dragon A250 is proudly designed, manufactured, and assembled in the USA.

Is the CAD/CAM software included?

Yes, the Dragon Software Suite is included with your Dragon A250.

How many Dragon machines are out in the field?

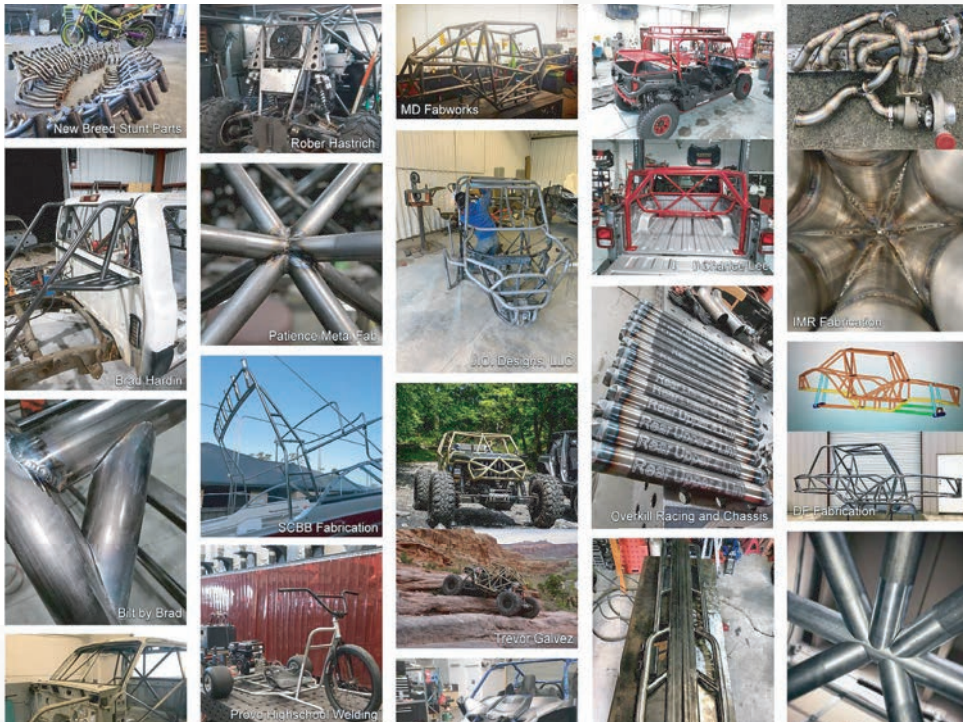
Over 600 and counting.

How does the Dragon A250 load?

From the front, back, top, or either side; it depends on how your shop is set up and what you are cutting there are multiple ways to easily load material. The tube can be placed in the front gate, then tightened into the self-centering three jaw chuck, and then the front gate can be closed to the correct amount of tightness on the material. Usually, loading is done by one person.

What is the cut quality/dross level?

The dross level varies based on a variety of factors; including amperage used, cut speed, material size, cut design, material type, tolerance requirements, and material thickness. The optional Material Coolant System add-on can greatly improve the cut quality and dross level. You can request a benchmark/sample package to see Dragon cut parts in person.



*“ Every chassis builder
should have a Dragon. ”*

- Kryptonite Racecars



*“ I have produced hundreds and hundreds of cages
and thousands of just single parts. The production
rate is 40x faster than what we were doing before. ”*

- Gilbert Automotive Designs, Joey Gilbert