

DIECI
AUSTRALIA

HAYMASTER | 40.7





HAYMASTER MAKES LIGHT WORK OF HAY HANDLING

Extremely easy to handle, maximum power at the wheels and boom, absolute comfort and ecological. These are just a few reasons that make the Haymaster the most innovative machine in its sector.

The simplicity of the fully mechanical FPT engine, combined with the EVO2 transmission, ensures all the required power to the wheels, with reduced consumption.

The Haymaster responds to controls in a fluid way, with accuracy and promptness, thus guaranteeing exceptional work comfort in complete safety.

The high-efficiency steering system provides an effortless handling experience; even under heavy load conditions, the steering remains responsive. Manoeuvrability and compactness continue to be standout features, with one of the narrowest turning radius' in its category.

The **Haymaster** can be fitted with a full range of accessories, making it an incredibly versatile machine.

ABSOLUTE COMFORT: ITALIAN DESIGN AND STYLE

Dieci telehandlers have always been a combination of **comfort** and **functionality** which makes us stand out all over the world.

Unparalleled Manoeuvrability

The use of the **Powershift** transmission, combined with the right work mode, will enable easy manoeuvres. The combined use of the electronic inching pedal and accelerator make it possible to move the telehandler forward slowly and in a controlled way, also with the boom at maximum height.

Specially Designed Air Conditioning

Australian designed air-conditioning system, featuring in cabin filtration, an automatic reversing fan fitted to the engine cooling system, and a pair of high velocity cab mounted condenser fans.

Easy Ride System

Developed by Dieci, the sophisticated air suspension system installed on the boom, drastically reduces up and down movement when travelling over rough terrain.

Dual Radiator & Fan Drive

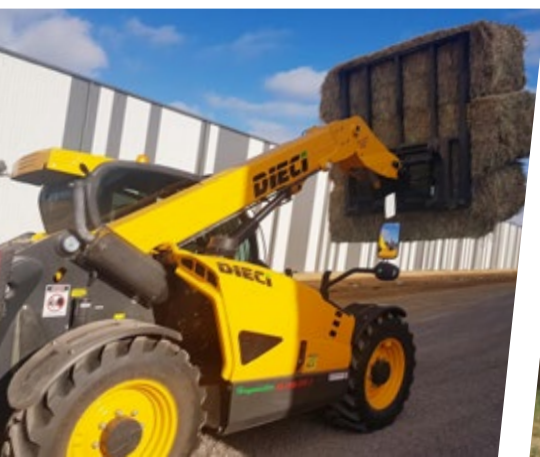
Two distinct radiators respectively dedicated to water and oil cooling. Numerous thermal sensors protect the propulsion system against any problems of overheating.

Maximum Safety

The ROPS-FOPS approved cab is designed with a safety cell to provide maximum safety to the operator at all times. Dieci telehandlers comply with AS1418.19 / 10896.1.

Deadman sensor, combined with operator presence sensor in the seat, prevents accidental operation.

The **Load Limiter Device** analyses vehicle stability in real time and inhibits any aggravating movements when the pre-set safety limits are reached.



Haymaster 40.7

7.00m
Max Reach

4,000kg
Max Capacity

125hp / 93kW
Nominal Power



4-in-1 Joystick

The boom can be fully operated by the hydraulic control distributor-single joystick with proportional and simultaneous controls which also incorporates FNR, for easier and more practical direction control.

Double Reversible Fan

Enables remarkable fuel savings, making it faster and easier to execute cleaning operations required in dirty or dusty operations.

Single Compensation Cylinder

Patented by Dieci - is located inside the lifting ram, ensures that the load on the boom is balanced at all times, thereby improving durability.

Inching Pedal

An essential control that allows travel speed to momentarily slow down or come to a stop while still offering maximum power to boom functions to increase precision and productivity for delicate operations.

Panoramic Views

The large, curved windows of the cab offer a complete 360° outside view with uninterrupted visibility. Integrated LED work lights allow better visibility at night.

Advanced Telescopic Boom

Made of high resistance steel, while load sensing and flow sharing distributors allow for more simultaneous movements during operation.

146° Fork Swivelling Angle Rotation

Specially designed to increase the operating arc, which is particularly useful when unloading with the boom raised.

Comfort & Ease of Access

Spacious cab designed for operator comfort and ergonomics, adjustable steering wheel (height and depth), air suspension seat and storage compartments.

TECHNICAL DATA

PERFORMANCE	
Maximum capacity	4,000 kg
Maximum lifting height	7.0 m
Maximum horizontal extension	4.0 m
Fork swiveling angle	146 °
Pull-out force	6,000 daN
Towing force	8,200 daN
Maximum climb angle	60 %
Unladen weight	7,700 kg
Maximum speed	40 km/h

ENGINE	
Brand	FPT
Nominal power	125 hp / 93 kW (@ 2,200 rpm)
Operation	4-stroke / diesel
Injection	Mechanical direct
Number and arrangement of cylinders	4, vertical inline
Displacement	4,485 cm ³
Emission standard	Stage IIIA/Tier 3
Cooling	Liquid
Intake	Turbocharger after-cooler

TRANSMISSION	
Type	Torque converter with power shift EVO2 reversing mechanism and electric control
Inching control	With electronic pedal for controlled forward movement
Gearbox	6 forward gears / 3 reverse gears with electronic control

HYDRAULIC SYSTEM	
Hydraulic pump type	LS piston pump for power steering and movement and gear pump for services
Hydraulic pump capacity	190 l/min
Maximum operating pressure	25 MPa (3,626 psi)
Boom hydraulic sockets	With quick couplings
Distributor control	4-in-1 joystick with integrated FNR (with deadman capacitive sensor)
Distributor type	Hydraulic distributor-single joystick with proportional and simultaneous controls

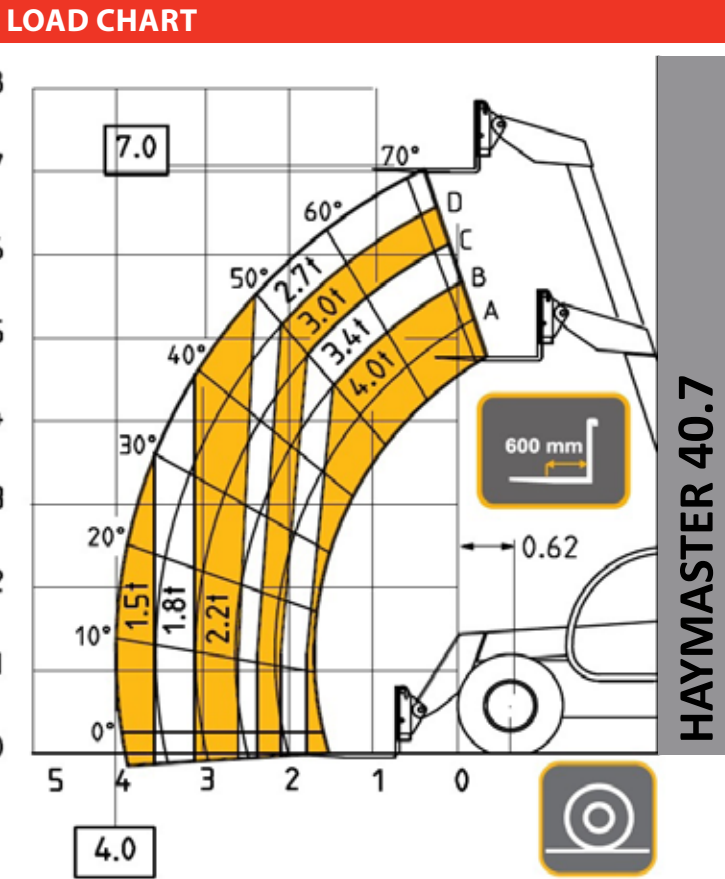
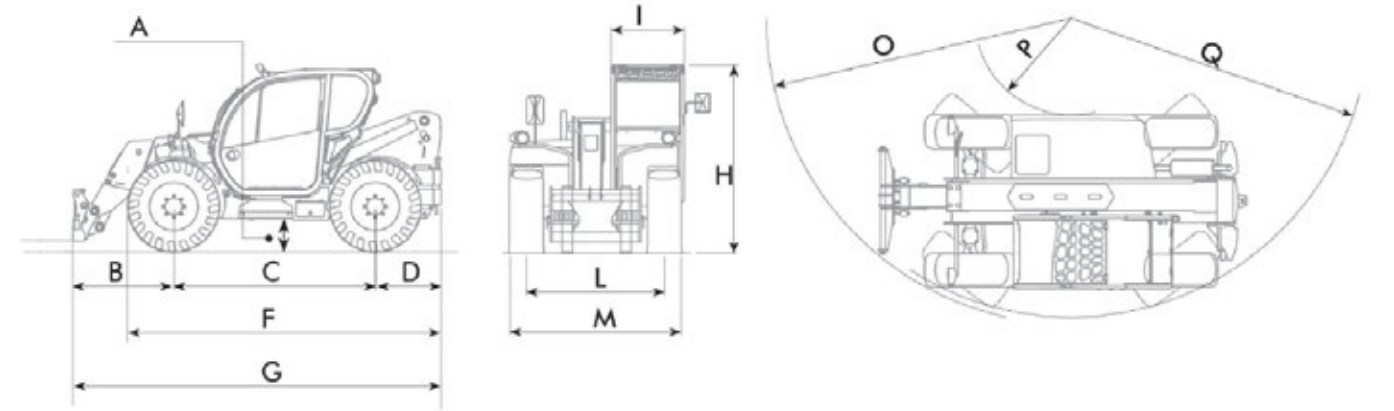
TANK CAPACITIES	
Hydraulic tank	160 l
Diesel tank	180 l

DIFFERENTIAL AXLES	
Steering axles	2 steering, with 4 epicyclodial reduction gears
Type of steering	4 wheels / transversal / 2 wheels
Service brake	Oil bath with servo brake on front and rear with double hydraulic system
Park brake	Negative actuation with electrical control

TYRES	
Size	460/70x24"

HAYMASTER 40.7

DIMENSIONS	
A	360 mm
B	1,475 mm
C	2,750 mm
D	850 mm
F	4,175 mm
G	5,075 mm
H	2,445 mm
I	940 mm
L	1,850 mm
M	2,310 mm
O	5,185 mm
P	1,320 mm
Q	3,920 mm



SPECIAL FEATURES	
Australian designed air conditioning with cabin filtration	
Side shift carriage	
Easy ride boom suspension	
Window tint	
Double reversible fan	
Battery isolation switch	
LED lighting pack	
4 x LED work lights on the front and rear of the cab	
1 x LED work light on boom head	
Canvas seat cover	
Bluetooth radio and aerial	
Air suspension seat	



NEW SOUTH WALES

Sydney Branch

1/5 Melito Court,
Prestons, NSW 2170

WESTERN AUSTRALIA

Perth Branch

32 Allott Way,
Maddington, WA 6109

VICTORIA

Melbourne Branch

169 Studley Court,
Derrimut, VIC 3026

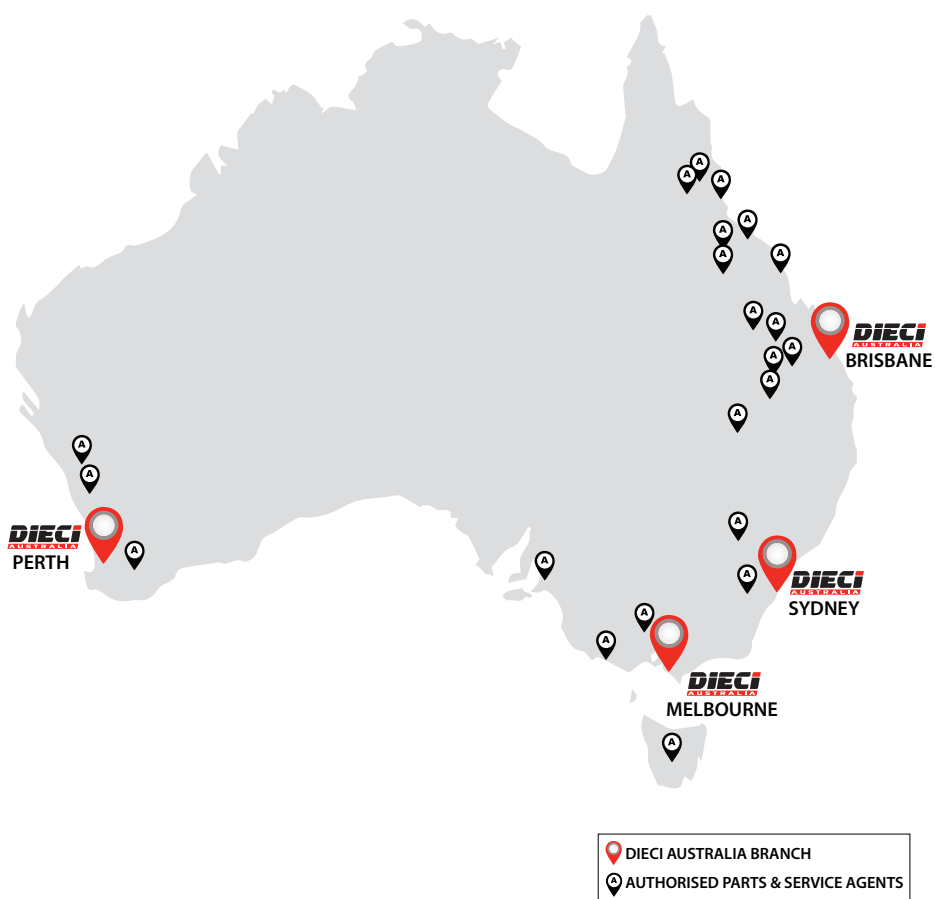
QUEENSLAND

Brisbane Branch

1/7 Australand Drive,
Berrinba, QLD 4117

Brisbane North Branch

69 Griffin Crescent,
Brendale, QLD 4500



www.dieciaustralia.com.au | ph: 1300 888 479 | sales@dieciaustralia.com.au

Distributed by Dieci Australia

Illustrations and photos show the standard international models and may or may not include optional equipment, accessories, customer installed or modified parts, optional parts and all standard equipment with some differences in colour and features. Machine specifications are subject to change without notice and additional load charts and machine or attachment specifications may be available on request. Please refer to the user and maintenance manuals located on Dieci Australia's website for correct machine and attachment operation.

Printed in Australia

V1125