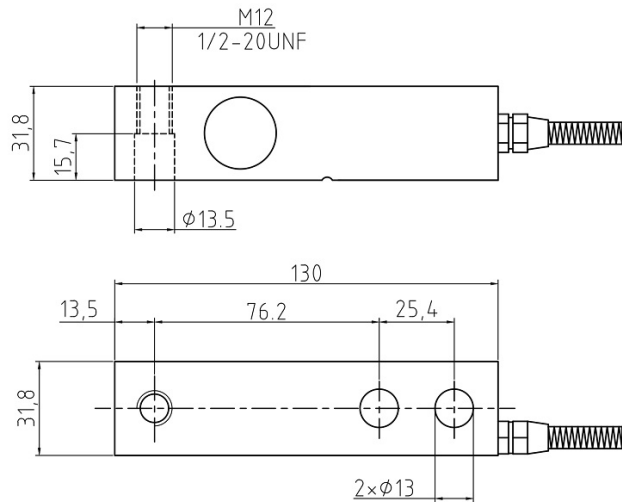


AS130 Shear Beam Loadcell



NMI pattern approval: S779
Rated capacities: 500kg...2.5t
Alloy steel construction
Hermetically welded sealing
Low profile construction
Can replace similar components from other loadcell manufacturers

Loadcell Dimensions



Shear Beam Loadcell

Specifications

Parameter	Value			Units
Rated Capacity (E _{max})	500 / 1000 / 1500 / 2000 / 2500			kg
Accuracy class	C3	C4	C5	
Maximum number of LC intervals (N _{max})	3000	4000	5000	
Min. LC verification interval (V _{min})	E _{max} / 5000			kg
Temp. effect on zero balance	± 0.0028	± 0.0014		% of E _{max} / °C
Rated output	2			mV/V
Rate output tolerance	± 0.1			% of E _{max}
Zero Balance	± 1.0			% of E _{max}
Temp. effect on rated output +20...+40°C	± 0.00175	± 0.0013	± 0.00105	% of AL / °C
-10...+20°C	± 0.00117	± 0.0009	± 0.0007	
Hysteresis error	± 0.0175	± 0.0131	± 0.0105	% of E _{max}
Non-linearity error	± 0.0175	± 0.0131	± 0.0105	% of E _{max}
Min. dead load output return	± 0.0166	± 0.0125	± 0.01	% of AL
Terminal resistance	Excitation	385 ± 15		Ω
	Output	350 ± 3		Ω
Insulation resistance @50VDC	> 500			MΩ
Excitation voltage	Recommended	0 ¹⁰		V AC/DC
	Maximum	15		V AC/DC
Temperature range	Compensated	-10 to +40		°C
	Operating	-30 to +65		°C
	Safe storage	-40 to +80		°C
Load limit	Safe storage	150		% of E _{max}
	Ultimate	300		% of E _{max}
Protection	Type	Hermetically welded		
	IP rating			
OIML / European approval	OIML Cert. No.	R60/2000-NL 1-17.43		
	European Cert. No.			
	Class	C5		
NTEP Approval	n _{max}	5000		
	Cert. No.	17-113		
	Class	IIIIM		
Cable	n _{max}	6000		
	Length	3.1		
Construction	Type	4-wire, PVC		
		Alloy steel		
Recommended torque	98			N.m

Notes: The values for linearity, hysteresis and temp. effect on rated output are recommended values, the sum of these data meets the requirements according to OIML R60

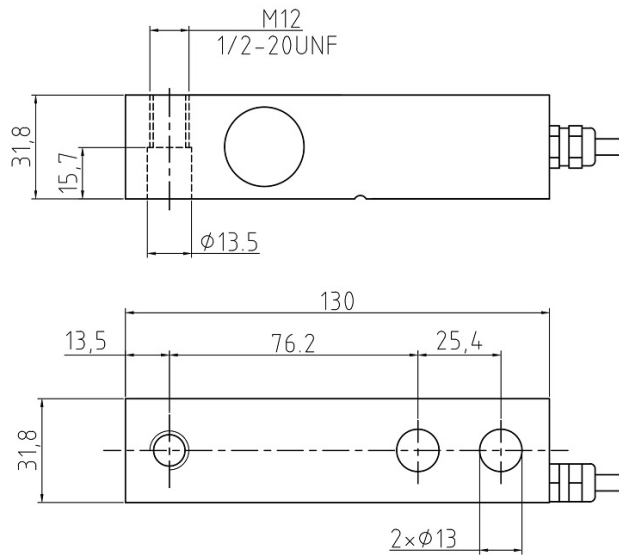
SS130 Shear Beam Loadcell



- NMI pattern approval: S779
- Rated capacities: 500kg...2.5t
- Stainless steel construction
- Hermetically welded sealing
- Low profile construction
- Can replace similar components from other loadcell manufacturers



Loadcell Dimensions



Shear Beam Loadcell

Specifications

Parameter	Value			Units
Rated Capacity (E _{max})	500 / 1000 / 1500 / 2000 / 2500			kg
Accuracy class	C3	C4	C5	
Maximum number of LC intervals (N _{max})	3000	4000	5000	
Min. LC verification interval (V _{min})	E _{max} / 5000			kg
Temp. effect on zero balance	± 0.0028	± 0.0014		% of E _{max} / °C
Rated output	2			mV/V
Rate output tolerance	± 0.1			% of E _{max}
Zero Balance	± 1.0			% of E _{max}
Temp. effect on rated output +20...+40°C	± 0.00175	± 0.0013	± 0.00105	% of AL / °C
-10...+20°C	± 0.00117	± 0.0009	± 0.0007	
Hysteresis error	± 0.0175	± 0.0131	± 0.0105	% of E _{max}
Non-linearity error	± 0.0175	± 0.0131	± 0.0105	% of E _{max}
Min. dead load output return	± 0.0166	± 0.0125	± 0.01	% of AL
Terminal resistance	Excitation	385 ± 15		Ω
	Output	350 ± 3		Ω
Insulation resistance @50VDC	> 500			MΩ
Excitation voltage	Recommended	0/10		V AC/DC
	Maximum	15		V AC/DC
Temperature range	Compensated	-10 to +40		°C
	Operating	-30 to +65		°C
	Safe storage	-40 to +80		°C
Load limit	Safe storage	150		% of E _{max}
	Ultimate	300		% of E _{max}
Protection	Type	Hermetically welded		
	IP rating			
OIML / European approval	OIML Cert. No.	R60/2000-NL 1-17.43		
	European Cert. No.	TC10977		
	Class	C5		
	n _{max}	5000		
NTEP Approval	Cert. No.	17-113		
	Class	IIIIM		
	n _{max}	6000		
Cable	Length	3.1		m
	Type	4-wire, PVC		
Construction	Stainless steel			
Recommended torque	98			N.m

Notes: The values for linearity, hysteresis and temp. effect on rated output are recommended values, the sum of these data meets the requirements according to OIML R60