

## SPARE PARTS



**Part No:**  
503-168  
**Description:**  
1C CLEAR SILICON  
DIAPHRAGM



**Part No:**  
503-140A  
**Description:**  
4FA CLEAR SILICON  
DIAPHRAGM



**Part No:**  
503-136A  
**Description:**  
4FA RED  
DIAPHRAGM



**Part No:**  
503-165  
**Description:**  
1C RED  
DIAPHRAGM



**Part No:**  
503-136  
**Description:**  
4F RED  
DIAPHRAGM



**Part No:**  
563-348  
**Description:**  
CIP BELLOWS  
(CUSHION SEAL)



**Part No:**  
SR6  
**Description:**  
SR6 GREEN  
DIAPHRAGM



**Part No:**  
SR6-R  
**Description:**  
SR6 RED  
DIAPHRAGM



**Part No:**  
110-057S  
**Description:**  
0.935" X 3" X 0.25"  
AVLD SEAL



**Part No:**  
110-057R  
**Description:**  
0.935" X 3" X 0.25"  
AVLD SEAL



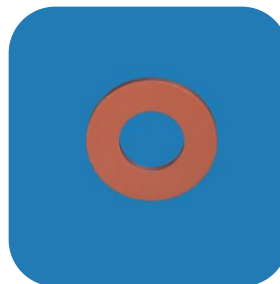
**Part No:**  
110-048R  
**Description:**  
0.935" X 2" X 0.25"  
AVLD SEAL



**Part No:**  
110-048S  
**Description:**  
0.935" X 2" X 0.25"  
AVLD SEAL



**Part No:**  
110-017S  
**Description:**  
0.98" X 2" X 0.25"  
SPACER



**Part No:**  
110-005S  
**Description:**  
0.98" X 2" X 0.125"  
SPACER



**Part No:**  
110-053S  
**Description:**  
FLIP FLOP SEAL



**Part No:**  
BS114  
**Description:**  
O-RING



**Part No:**  
110-08STW  
**Description:**  
RED SPACER  
TAPPER WASHER



**Part No:**  
MADE TO ORDER  
**Description:**  
SOLID SPACER



**Part No:**  
503-173  
**Description:**  
VALVE SLEEVE  
1.125" X 2"



**Part No:**  
745-702  
**Description:**  
VALVE SLEEVE  
1.125" X 2"



**Part No:**  
503-117  
**Description:**  
VALVE CLOSE  
SPRING (6LBS)



**Part No:**  
626-108-1  
**Description:**  
CIRCLIP



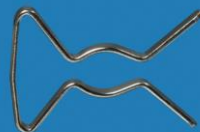
**Part No:**  
511-120  
**Description:**  
U JOINT, STAINLESS  
STEEL



**Part No:**  
503-408  
**Description:**  
VALVE SLEEVE  
REMOVAL TOOL



**Part No:**  
26-9  
**Description:**  
HAIR PIN CLIP



**Part No:**  
503-127  
**Description:**  
FLAT WIRE CLIP  
(1/4")



**Part No:**  
503-132  
**Description:**  
ROUND WIRE CLIP  
(1/8")



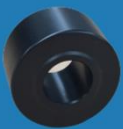
**Part No:**  
503-105  
**Description:**  
FLAT WIRE CLIP  
(1/4")



**Part No:**  
768-324  
**Description:**  
LIFTER BUSH



**Part No:**  
510-132  
**Description:**  
LIFTER HOUSING  
BUSHING



**Part No:**  
510-339  
**Description:**  
CAM ROLLERS



**Part No:**  
593-359  
**Description:**  
CAM ROLLER  
SHAFT



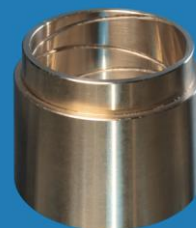
**Part No:**  
752-122  
**Description:**  
700 SERIES  
MAIN DRIVE GEAR



**Part No:**  
616-135  
**Description:**  
THRUST BEARING



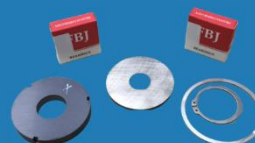
**Part No:**  
593-146  
**Description:**  
AUTO RAISING  
BRONZE NUT



**Part No:**  
510-121  
**Description:**  
BOWL/CAPPER  
LOWER BUSHING



**Part No:**  
MCC30-19-CRBK  
**Description:**  
MCC30-19 REBUILD  
COMPLETE KIT



**Part No:**  
587-5-K  
**Description:**  
587-5 REBUILD KIT



**Part No:**  
MCC35-19  
**Description:**  
HYSTERESIS  
CAPPING CLUTCH



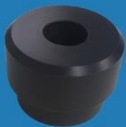
**Part No:**  
587-238  
**Description:**  
COLLET HUB



**Part No:**  
587-127  
**Description:**  
CAPPER HEAD PIN  
REMOVAL TOOL



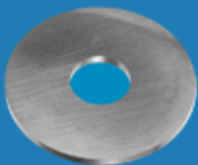
**Part No:**  
587-110  
**Description:**  
CAPPER HEAD PIN



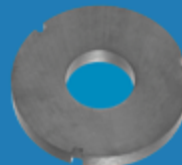
**Part No:**  
587-288  
**Description:**  
COLLET STOP  
38MM FLAT



**Part No:**  
616-1901  
**Description:**  
COLLET STOP  
SPRING LIGHT (7LB)



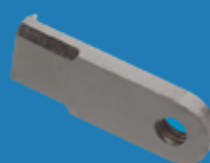
**Part No:**  
587-111  
**Description:**  
CAPPER HEAD DISK



**Part No:**  
587-107  
**Description:**  
6 POLE MAGNET



**Part No:**  
745-369  
**Description:**  
NECK KNIFE INSERT

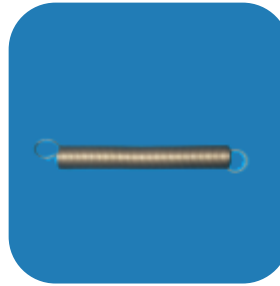


**Part No:**  
655-279  
**Description:**  
KNIFE INSERT NVAC

# spare parts catalogue



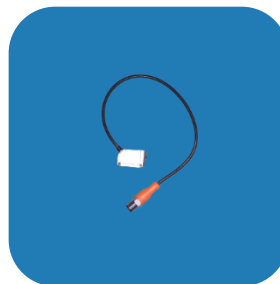
**Part No:**  
655-2951  
**Description:**  
STATIONARY JAW  
SUPPORT



**Part No:**  
5015-1  
**Description:**  
JAW TENSION  
SPRING



**Part No:**  
752-130  
**Description:**  
ROD CAM  
FOLLOWER



**Part No:**  
O6P301  
**Description:**  
PHOTOELECTRIC  
SENSOR



**Part No:**  
616-116-2  
**Description:**  
TRI CLOVER LEVEL  
CONTROLLER



**Part No:**  
616-116-3  
**Description:**  
TRI CLOVER FLOAT



**Part No:**  
626-203  
**Description:**  
PRODUCT VALVE 2"  
c/w CONTROL HEAD



**Part No:**  
626-208  
**Description:**  
EPV LEVEL VALVE/  
TRANSMITTER



**Part No:**  
626-116-K  
**Description:**  
VALVE SERVICE  
REPAIR KIT 771 TYPE



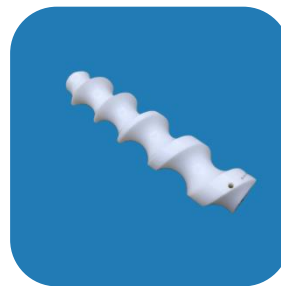
**Part No:**  
001501  
**Description:**  
2" TRI CLOVER  
VALVE

## TECHNICAL SALES

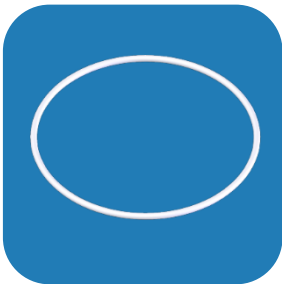
### SPARE PARTS



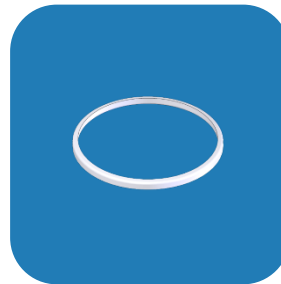
**Part No:**  
MADE TO ORDER  
**Description:**  
CHANGE PARTS



**Part No:**  
MADE TO ORDER  
**Description:**  
SCROLL



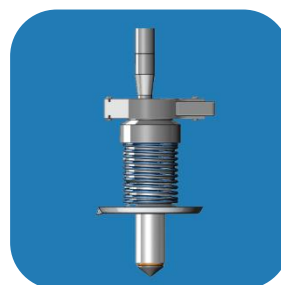
**Part No:**  
MADE TO ORDER  
**Description:**  
BOWL SEAL



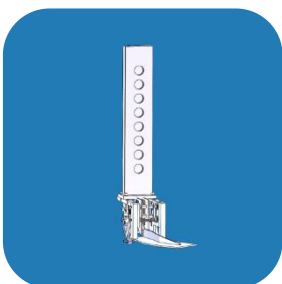
**Part No:**  
MADE TO ORDER  
**Description:**  
BOWL BEARING



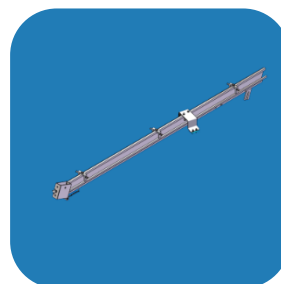
**Part No:**  
MADE TO ORDER  
**Description:**  
VENT TUBE



**Part No:**  
MADE TO ORDER  
**Description:**  
VALVE ASSEMBLY



**Part No:**  
MADE TO ORDER  
**Description:**  
CAP DISPENSER



**Part No:**  
MADE TO ORDER  
**Description:**  
CAP CHUTE



## **PARTNER SUPPLIER RANGE**

Icon Equipment offers a range of additional products and services from partnered suppliers for all your liquid filling and packaging needs.

 <p><b>serac</b></p>	<p><b><u>Serac Filling &amp; Capping Equipment:</u></b></p> <ul style="list-style-type: none"> <li>• <i>Bearing and bushing</i></li> <li>• <i>Valves</i></li> <li>• <i>Chucks and collets</i></li> <li>• <i>Bottle change parts</i></li> <li>• <i>Pneumatic components</i></li> <li>• <i>Consumables</i></li> </ul>
 <p>claranor Pulsed Light Sterilization</p>	<p><b><u>Claranor Sterilization Equipment:</u></b></p> <ul style="list-style-type: none"> <li>• <i>Quartz tubes and plates</i></li> <li>• <i>Ignitions cards</i></li> <li>• <i>Consumables</i></li> </ul>
 <p><b>AROL</b> closure systems</p>	<p><b><u>Arol Capping Equipment:</u></b></p> <ul style="list-style-type: none"> <li>• <i>Bearing and bushing</i></li> <li>• <i>Chucks and collets</i></li> <li>• <i>Anti-spin components</i></li> <li>• <i>Pneumatic components</i></li> <li>• <i>Consumables</i></li> </ul>
 <p><b>WAB</b></p>	<p><b><u>WAB Bottle Rinser Equipment:</u></b></p> <ul style="list-style-type: none"> <li>• <i>Bearing and bushing</i></li> <li>• <i>Spray jets</i></li> <li>• <i>Neck clamp assemblies</i></li> <li>• <i>Bottle change parts</i></li> <li>• <i>Consumables</i></li> </ul>



## SPARE PART SALES

Icon Equipment supplies the highest quality spare parts for a range of filling machines including Fogg, Federal, Graham Enoch, Cherry Burrell, UDEC & UFS.

The information provided in the Spare Parts Catalogue is a basic reference to the most commonly used spare parts. Contact our Spare Parts Team for further detailed information.

## RANGE OF EQUIPMENT

- Turn-Key Filling Solutions
- Rotary Fillers
- Gravity Fillers
- Non-Contact Weigh Cell Fillers
- Piston Fillers
- Cup Fillers
- Rotary Tables
- Capping Machines
- Retrofit Cappers
- Cap Sorters
- Conveyors
- Rinsers
- Bottle Unscramblers
- Bottle Hoppers
- Labelling Machines
- Replacement Bowls
- Filling Valves
- Bottle Change Parts
- Shrink Bundlers
- Case Packers
- Induction Sealers
- Crate Stackers

## CONTACT LISTING

**SALES ENQUIRIES:** [enquiries@iconequip.com.au](mailto:enquiries@iconequip.com.au)

**SERVICE ENQUIRIES:** [service@iconequip.com.au](mailto:service@iconequip.com.au)

**SPARE PART ENQUIRIES:** [spares@iconequip.com.au](mailto:spares@iconequip.com.au)

**GENERAL ENQUIRIES:** [enquiries@iconequip.com.au](mailto:enquiries@iconequip.com.au)