

MODEL 151

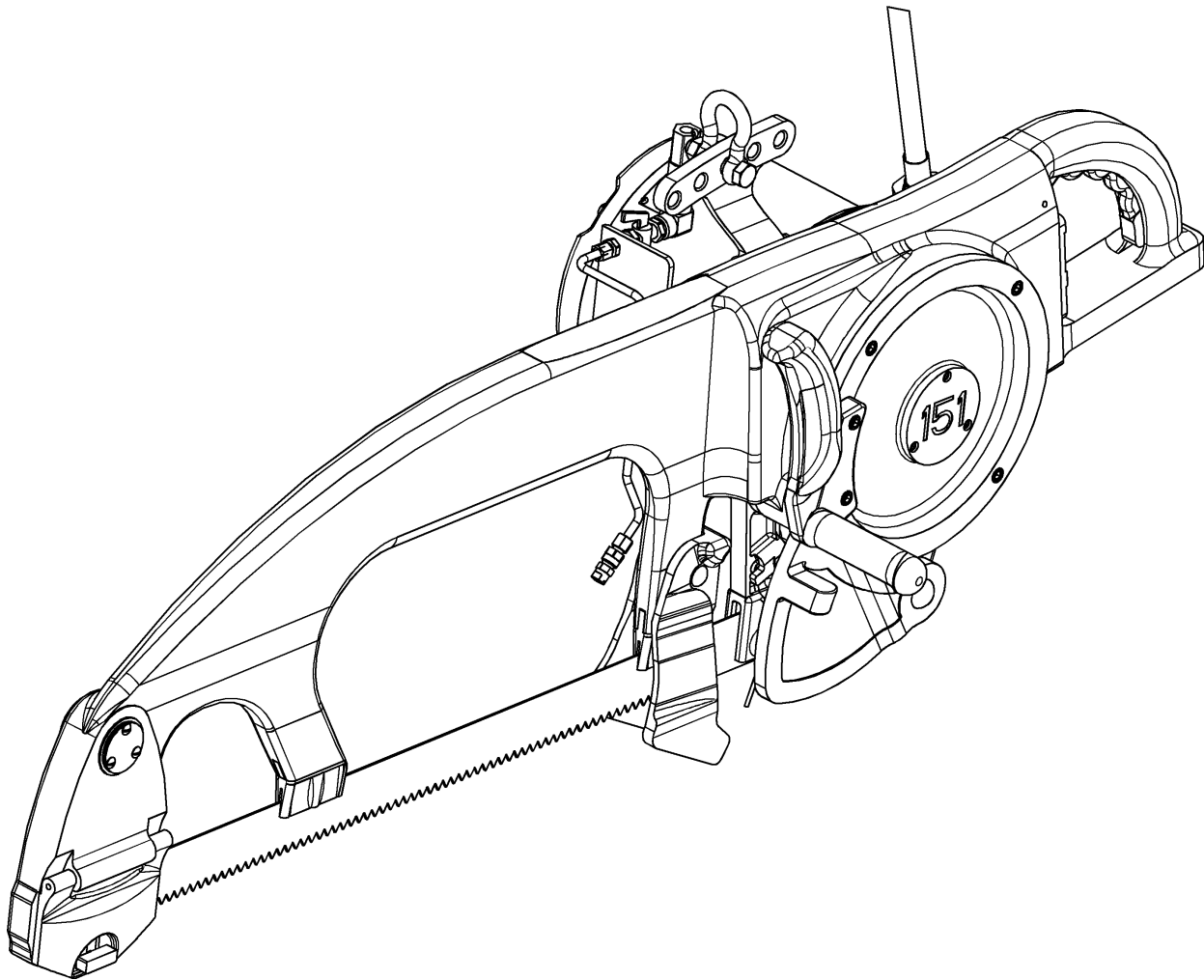
INCLUDING: OPERATION, INSTRUCTION, INSTALLATION, MAINTENANCE AND PARTSBOOK


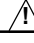
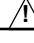
**IMPORTANT: READ THIS MANUAL CAREFULLY BEFORE INSTALLING, OPERATING OR
SERVICING THIS TOOL.**

BEEF SPLITTING SAW




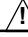

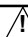


TOOL DATA

MODEL: KENTMASTER 151
ASSEMBLY NO: 1500000
TYPE: ELECTRICAL OPERATED
NET WEIGHT: 140 LB (64 KG)
MOTOR HORSEPOWER: 2HP / 50Hz, 60Hz



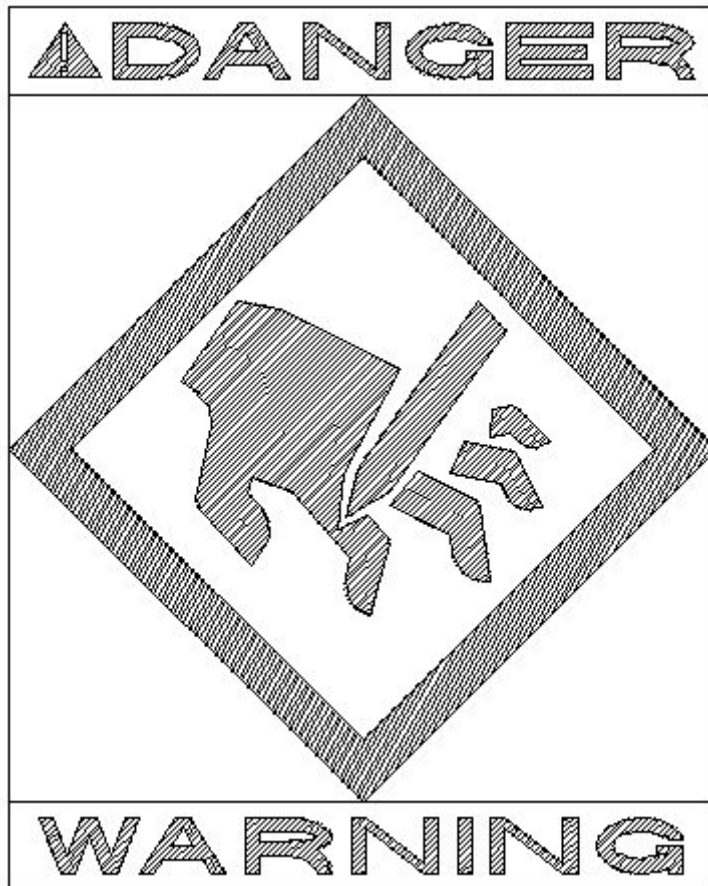
 WARNING	= Hazards or unsafe practices which could result in severe personal injury, death or substantial property damage.
 CAUTION	= Hazards or unsafe practices which could result in minor personal injury, product or property damage.
 NOTICE	= Important installation, operation or maintenance information.

OPERATING AND SAFETY INSTRUCTIONS

-  **WARNING** DO NOT OPERATE THIS TOOL UNTIL YOU HAVE READ AND UNDERSTOOD THE SAFETY INSTRUCTIONS AND OPERATING MANUALS.
-  **WARNING** DO NOT OPERATE THIS TOOL UNTIL YOU HAVE RECEIVED TRAINING IN THE HANDLING, OPERATION AND USE OF THIS TOOL.
-  **WARNING** STOP USING A MALFUNCTIONING OR DEFECTIVE TOOL IMMEDIATELY. REPORT ANY PROBLEMS OR DEFECTS TO YOUR SUPERVISOR FOR REMOVAL OF THE TOOL FROM SERVICE.
-  **WARNING** DO NOT ATTEMPT TO REPAIR THE TOOL YOURSELF.
-  **WARNING** DO NOT ALLOW UNAUTHORIZED PERSONS TO USE TOOL.
-  **WARNING** REMOVE AND DISCONNECT POWER FROM THE TOOL WHEN TOOL IS LEFT UNATTENDED OR IS NOT IN USE.
-  **WARNING** NEVER TIE DOWN, BYPASS, ALTER OR MODIFY THE ACTIVATING SWITCHES OR TRIGGERS OF THIS TOOL.
-  **WARNING** NEVER MAKE ALTERATIONS OR MODIFICATIONS TO THIS TOOL.
-  **WARNING** BE CONSTANTLY AWARE AND ALERT FOR UNSAFE CONDITIONS AND REPORT THEM IMMEDIATELY TO YOUR SUPERVISOR.
-  **WARNING** NEVER PLACE YOUR HAND OR ANY PART OF YOUR BODY IN THE CUTTING PATH OF THE TOOL.
-  **WARNING** NEVER ALLOW ANYONE ELSE TO PLACE THEIR HANDS OR ANY PART OF THEIR BODY IN THE CUTTING PATH OF THE TOOL.
-  **WARNING** DO NOT ACTIVATE CONTROL SWITCHES OR TRIGGERS OF THIS TOOL UNLESS YOU INTEND TO TEST OR OPERATE THIS TOOL.
-  **WARNING** DO NOT USE THIS TOOL FOR ANY PURPOSE OTHER THAN IT'S INTENDED PURPOSE.
-  **CAUTION** WHEN OPERATING THIS TOOL WEAR THE PROTECTIVE GEAR AND SAFETY EQUIPMENT SUPPLIED TO YOU.
-  **WARNING** THE NOISE EMISSION (SOUND PRESSURE LEVEL) AT THE WORKSTATION MAY EXCEED 80 dB (A). EAR AND SOUND PROTECTION GEAR IS REQUIRED.

SERVICE

1. KEEP GOOD RECORDS OF ALL SERVICE ACTIVITY AND INCLUDE TOOL IN PREVENTIVE MAINTENANCE PROGRAM.
2. USE ONLY GENUINE KENTMASTER REPLACEMENT PARTS TO ASSURE PROPER PERFORMANCE OF TOOL.
3. CONTACT THE KENTMASTER SUPPLIER NEAREST YOU FOR PARTS AND CUSTOMER SERVICE INFORMATION.



PARTS BOOK

"151" MAIN ASSEMBLY

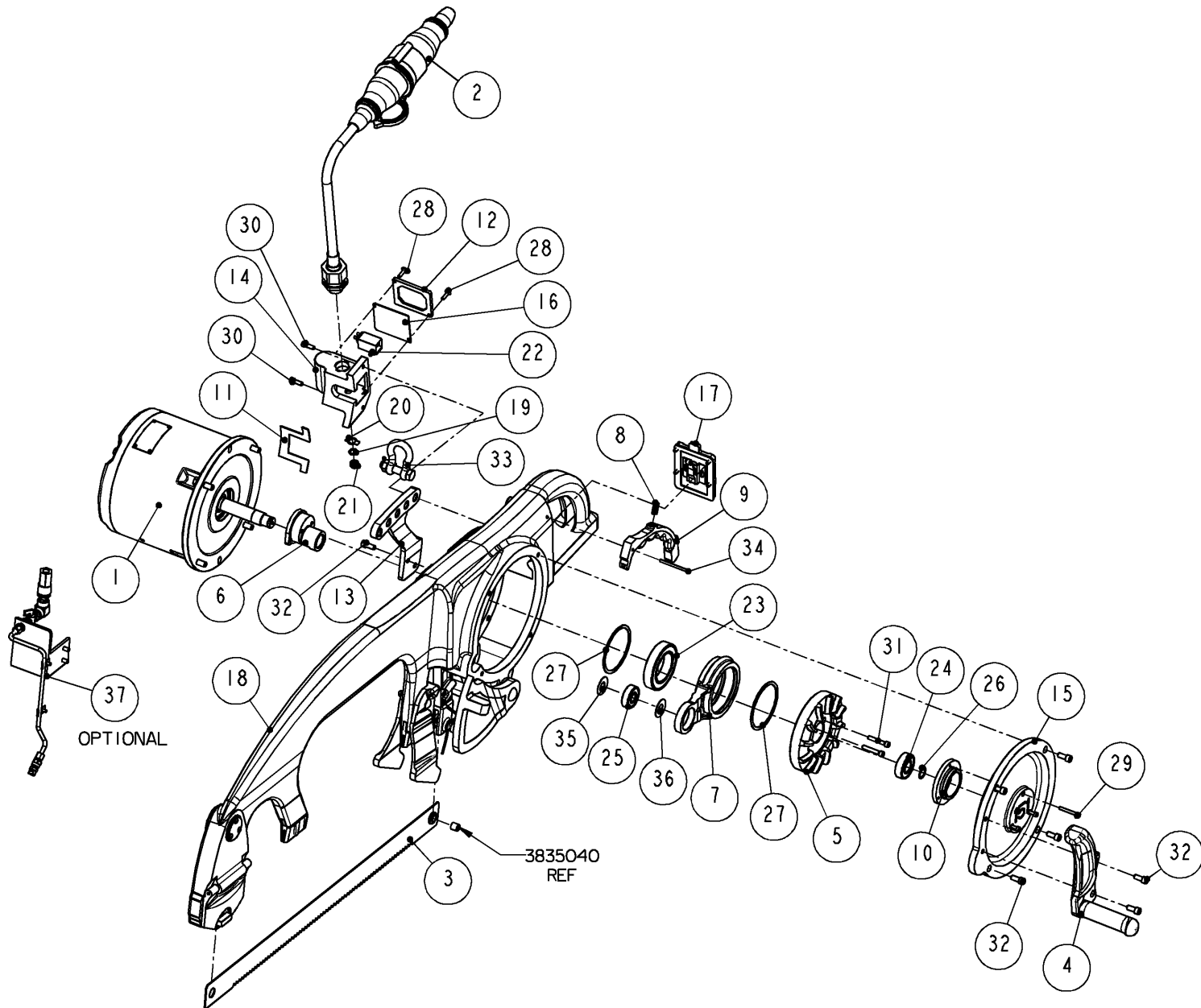


Figure 1 MODEL "151"

KENTMASTER MFG. CO., INC. 1801 SOUTH MOUNTAIN AVE., MONROVIA, CALIFORNIA 91016 UNITED STATES OF AMERICA
☎ TELEPHONE: (626) 359-8888 FAX: (626) 303-5151

1500000: 151 - BEEF SPLITTING SAW			
ITEM	PART #	DESCRIPTION	QTY
1	OPTIONS	MOTOR ASSEMBLY, 2 HP / REQUIRED	1
2	1002420	POWER CORD ASSEMBLY, NON 42V, 3 PHASE	1
	1002430	POWER CORD ASSEMBLY, 42V, 3 PHASE	1
	1002428	POWER CORD ASSEMBLY, 115V/230V, SINGLE PHASE	1
3	4100120	BLADE, STANDARD. 4TPI	1
	4100190	BLADE. 2TPI	1
4	1500040	HANDLE	1
5	1500060	FLY WHEEL	1
6	1500070	ECCENTRIC	1
7	1500090	CONNECTING ROD	1
8	1500110	SPRING	1
9	1500130	TRIGGER	1
10	1500730	BUSHING - OUTBOARD	1
11	1501010	GASKET	1
12	1501310	COVER	1
13	1501681	HANGER	1
14	1501850	WIRE BOX	1
15	1502060	COVER	1
16	1502080	GASKET	1
17	1502140	SWITCH PLATE ASSEMBLY	1
18	1503100	FRAME ASSEMBLY	1
19	2000080	LOCKNUT	1
20	2000130	ON-OFF PLATE	1
21	2000140	BOOT, TOGGLE SWITCH	1
22	2000730	SWITCH	1
23	3124110	BEARING	1
24	3204040	BEARING	1
25	3304020	BEARING	1
26	5100780	RETAINING RING	1
27	5603540	RING	2
28	8110060	SCREW	2
29	8210120	SCREW	3
30	8211060	SCREW	2
31	8211120	SCREW	2
32	8213060	SCREW	7
33	8462080	ANCHOR SHACKLE	1
34	8613360	PIN	1
35	8705240	SHIM	1
36	8705250	SHIM	1
37	1503200	WATER SPRAY ASSEMBLY / OPTIONAL	1

Figure 2 BOM FOR MODEL "151"

MOTOR ASSEMBLY

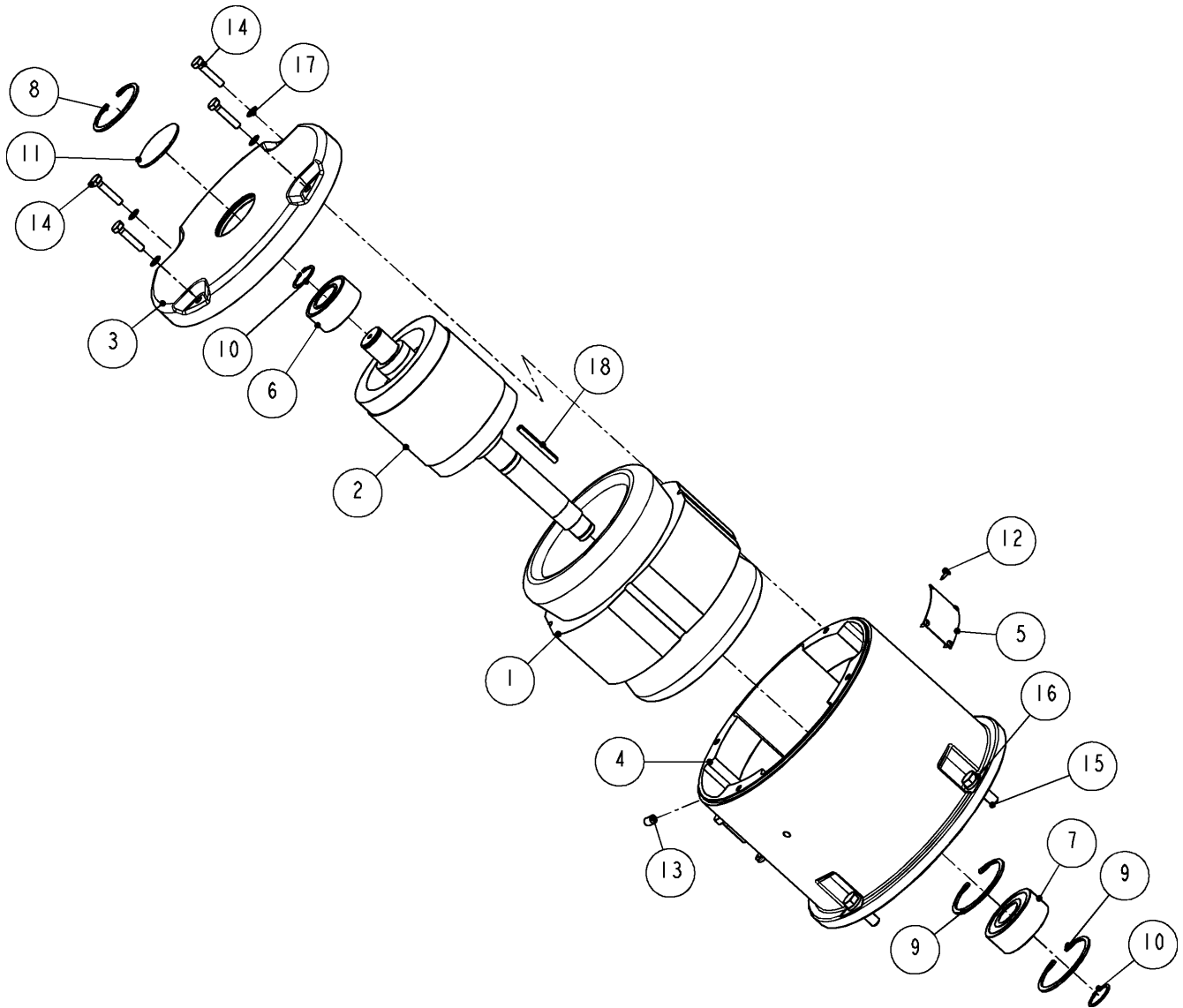
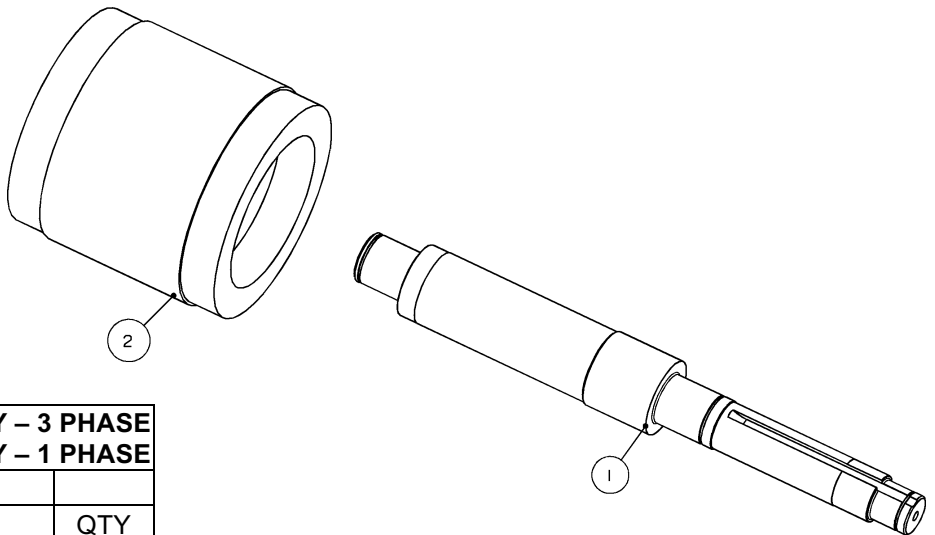


Figure 3 MOTOR ASSEMBLY

MOTOR ASSEMBLY			
ITEM	PART #	DESCRIPTION	QTY
1	OPTIONS	STATOR	1
2	OPTIONS	ROTOR - SHAFT ASSEMBLY	1
3	1501800	COVER, MOTOR HOUSING	1
4	1502430	MOTOR HOUSING	1
5	2000040	NAME PLATE	1
6	3524050	BEARING	1
7	3532050	BEARING	1
8	5002120	RETAINING RING	1
9	5002440	RETAINING RING	2
10	5100980	RETAINING RING	2
11	7902170	EXPANSION PLUG	1
12	8081020	SCREW	4
13	8313040	SET SCREW	1
14	8411100	SCREW	4
15	8415100	SCREW	4
16	8506160	WASHER	4
17	8507100	WASHER	4
18	8603170	SQUARE KEY	1

MOTOR ASS'Y 230V, 2HP, 1PH, 60HZ, 11.7 AMPS	1502560-230-160	2340260	1502420
MOTOR ASS'Y 115V, 2HP, 1PH, 60HZ, 23.4 AMPS	1502560-115-160	2340260	1502420
MOTOR ASS'Y 416V, 2HP, 3PH, 50HZ, 3.3 AMPS	1502530-416-350	2340230	1502410
MOTOR ASS'Y 208V, 2HP, 3PH, 50HZ, 6.6 AMPS	1502530-208-350	2340230	1502410
MOTOR ASS'Y 380V, 2HP, 3PH, 50HZ, 3.7 AMPS	1502520-380-350	2340220	1502410
MOTOR ASS'Y 220V, 2HP, 3PH, 50HZ, 6.4 AMPS	1502520-220-350	2340220	1502410
MOTOR ASS'Y 230V, 2HP, 3PH, 50HZ, 6.6 AMPS	1502510-230-350	2340210	1502410
MOTOR ASS'Y 115V, 2HP, 3PH, 50HZ, 13.2 AMPS	1502510-115-350	2340210	1502410
MOTOR ASS'Y 42V, 2HP, 3PH, 50HZ, 36.0AMPS	1502500	2340200	1502410
MOTOR ASS'Y 550V, 2HP, 3PH, 60HZ, 2.5AMPS	1502550	2340250	1502410
MOTOR ASS'Y 380V, 2HP, 3PH, 60HZ, 3.9 AMPS	1502540-380-360	2340240	1502410
MOTOR ASS'Y 220V, 2HP, 3PH, 60HZ, 6.8AMPS	1502540-220-360	2340240	1502410
MOTOR ASS'Y 460V, 2HP, 3PH, 60HZ, 3.3 AMPS	1502530-460-360	2340230	1502410
MOTOR ASS'Y 230V, 2HP, 3PH, 60HZ, 6.6AMPS	1502530-230-360	2340230	1502410
MOTOR ASS'Y 416V, 2HP, 3PH, 60HZ, 3.3AMPS	1502530-416-360	2340230	1502410
MOTOR ASS'Y 208V, 2HP, 3PH, 60HZ, 6.6AMPS	1502530-208-360	2340230	1502410
MOTOR OPTION DESCRIPTION	MOTOR ASSEMBLY (ORDER NUMBER)	STATOR	ROTOR
"151" MOTOR OPTIONS			

Figure 4 BOM FOR MOTOR ASSEMBLY

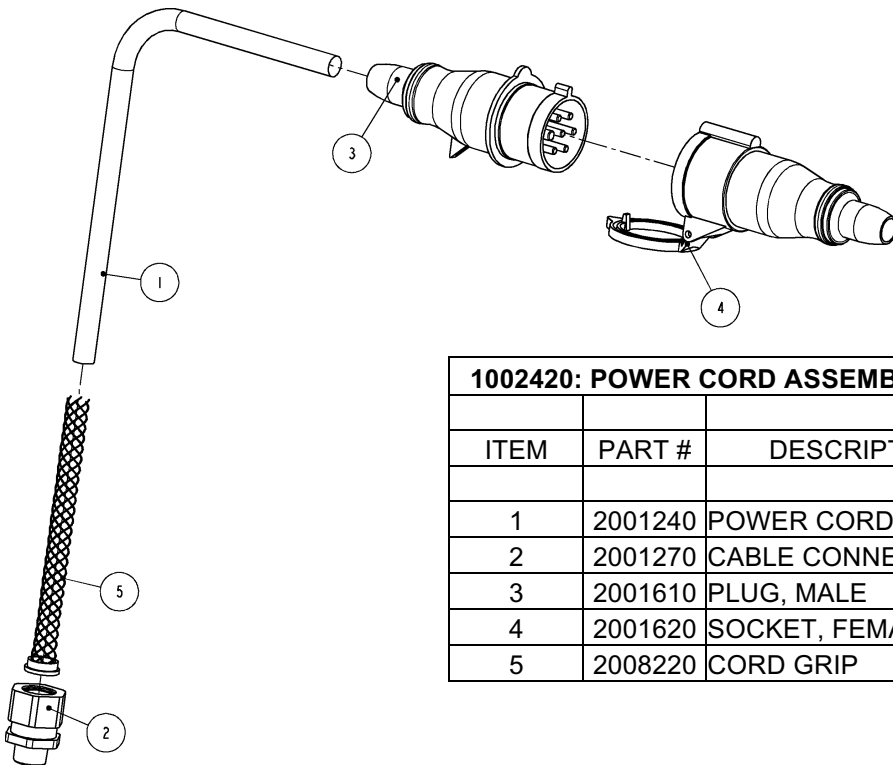


1502410: ROTOR SHAFT ASSEMBLY – 3 PHASE
1502420: ROTOR SHAFT ASSEMBLY – 1 PHASE

ITEM	PART #	DESCRIPTION	QTY
1	1502400	SHAFT	1
2	2340620	ROTOR – 3 PHASE	1
2	2340630	ROTOR – 1 PHASE	1

Figure 5 1502410, 1502420: ROTOR –SHAFT ASSEMBLY

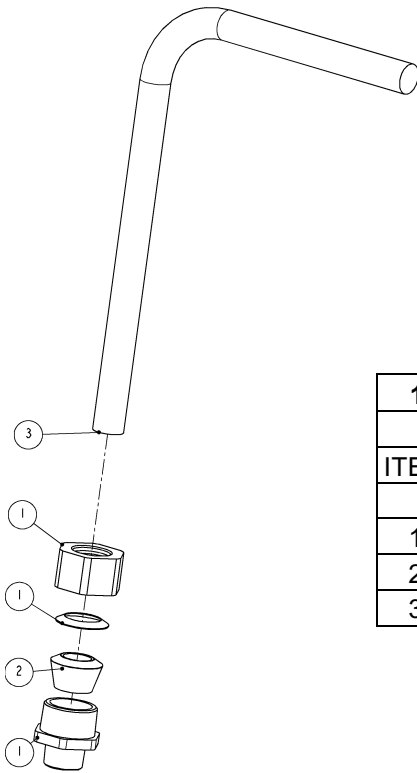
POWER SUPPLY



1002420: POWER CORD ASSEMBLY, NON 42V

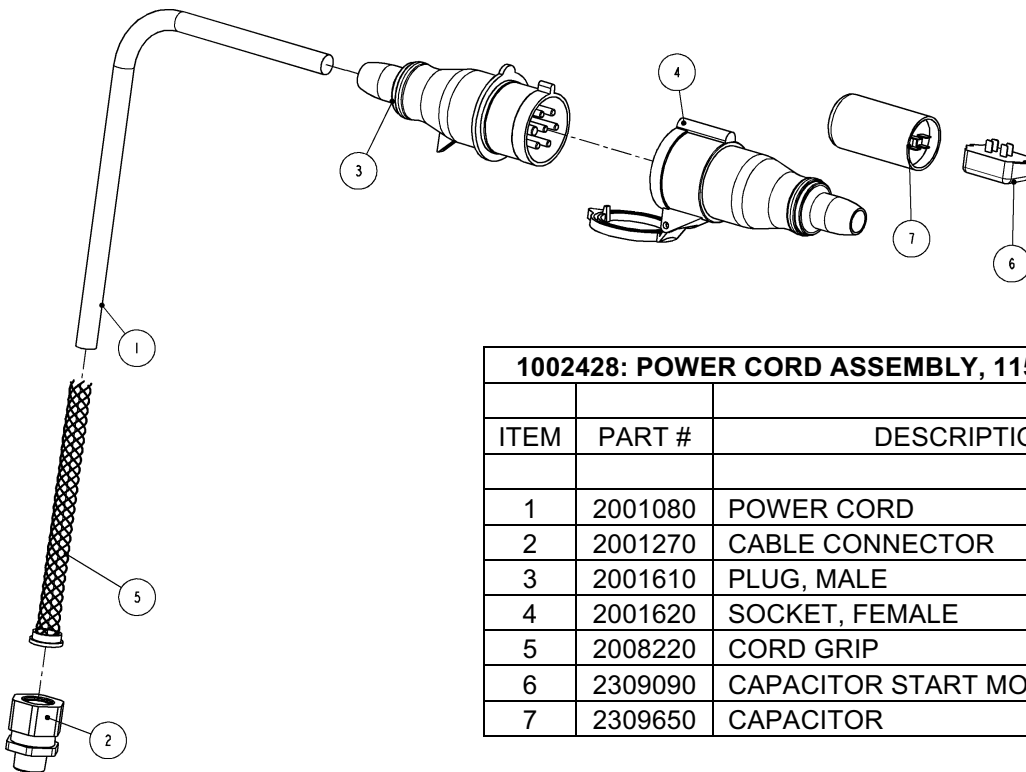
ITEM	PART #	DESCRIPTION	QTY
1	2001240	POWER CORD	1
2	2001270	CABLE CONNECTOR	1
3	2001610	PLUG, MALE	1
4	2001620	SOCKET, FEMALE	1
5	2008220	CORD GRIP	1

Figure 6 1002420: POWER SUPPLY, NON 42V, 3 PHASE



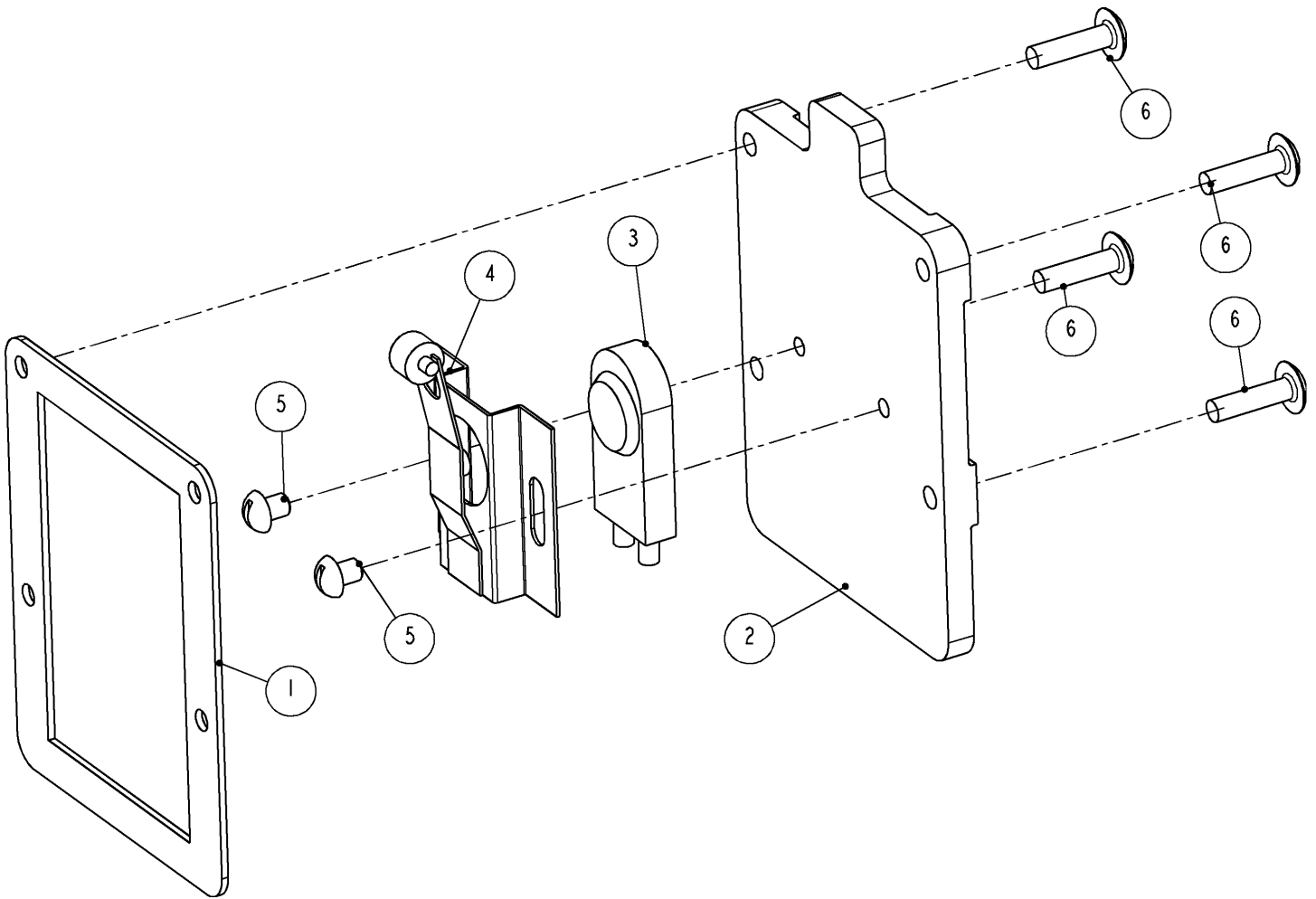
1002430: POWER CORD ASSEMBLY, 42V			
ITEM	PART #	DESCRIPTION	QTY
1	2001270	CABLE CONNECTOR	1
2	2001700	GROMMET	1
3	2007030	POWER CORD	1

Figure 7 1002430: POWER SUPPLY, 42V, 3 PHASE



1002428: POWER CORD ASSEMBLY, 115V, SINGLE PHASE			
ITEM	PART #	DESCRIPTION	QTY
1	2001080	POWER CORD	1
2	2001270	CABLE CONNECTOR	1
3	2001610	PLUG, MALE	1
4	2001620	SOCKET, FEMALE	1
5	2008220	CORD GRIP	1
6	2309090	CAPACITOR START MOTOR	1
7	2309650	CAPACITOR	1

Figure 8 1002428: POWER SUPPLY, 115V / 230V, SINGLE PHASE



1502140: SWITCH PLATE ASSEMBLY			
ITEM	PART #	DESCRIPTION	QTY
1	1301860	INSULATOR	1
2	1502130	PLATE, SWITCH	1
3	2000690	SWITCH	1
4	2000760	TOP PLATE	1
5	8030020	SCREW	2
6	8110060	SCREW	4

Figure 9 1502140: SWITCH PLATE ASSEMBLY

FRAME & YOKE

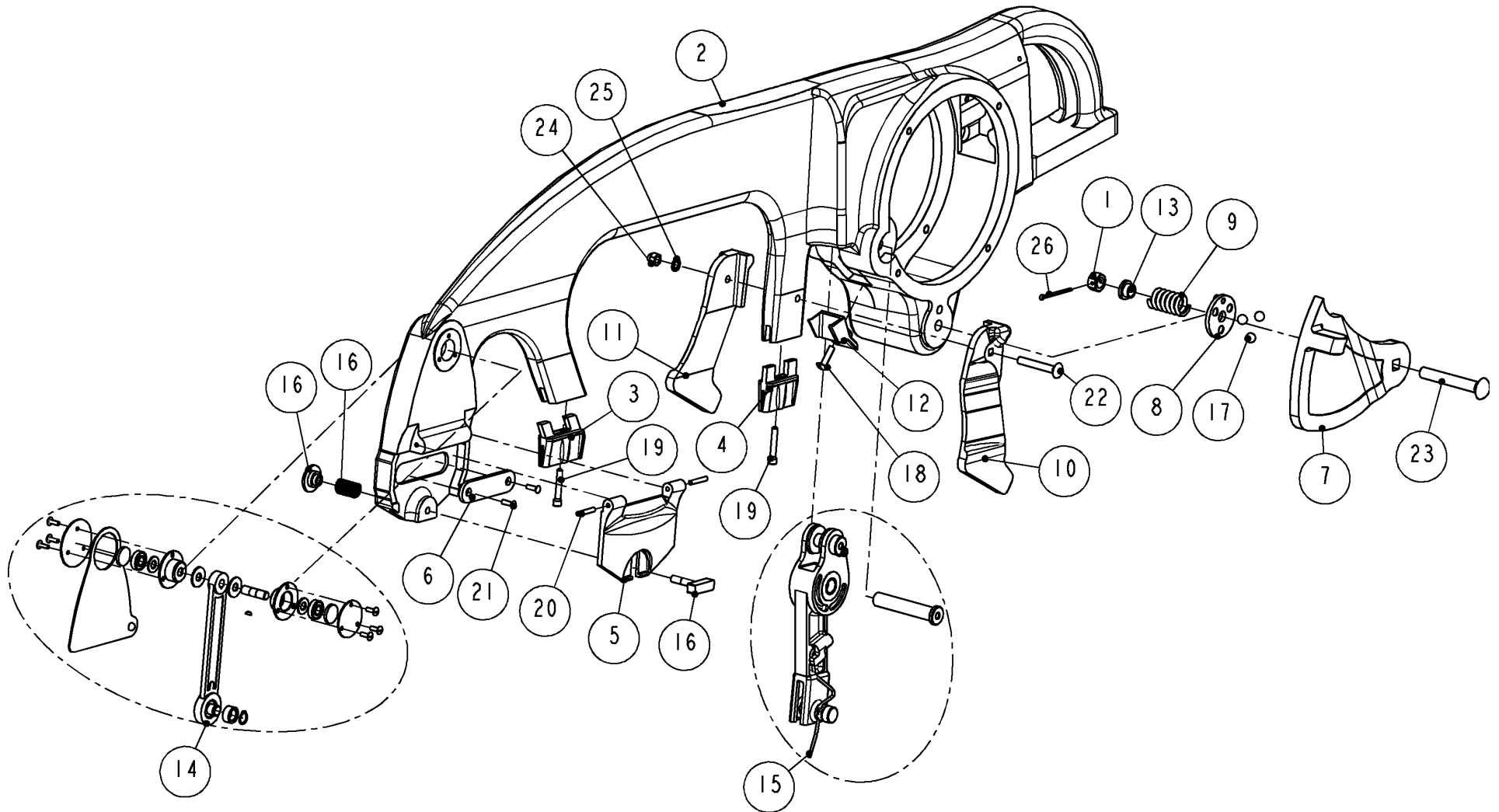
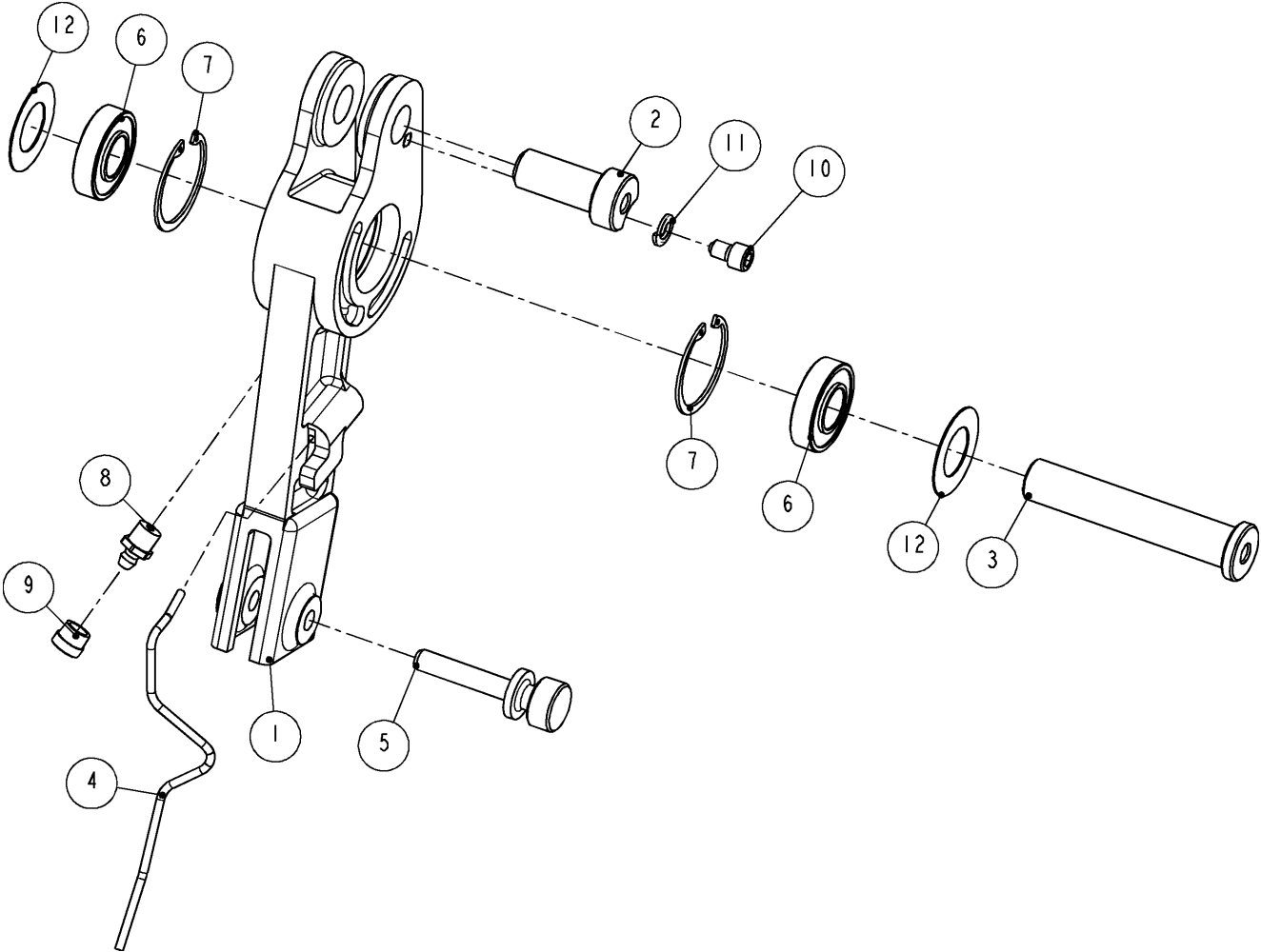


Figure 10 1503100: FRAME AND SUSPENSION ARM

KENTMASTER MFG. CO., INC. 1801 SOUTH MOUNTAIN AVE., MONROVIA, CALIFORNIA 91016 UNITED STATES OF AMERICA
☎ TELEPHONE: (626) 359-8888 FAX: (626) 303-5151

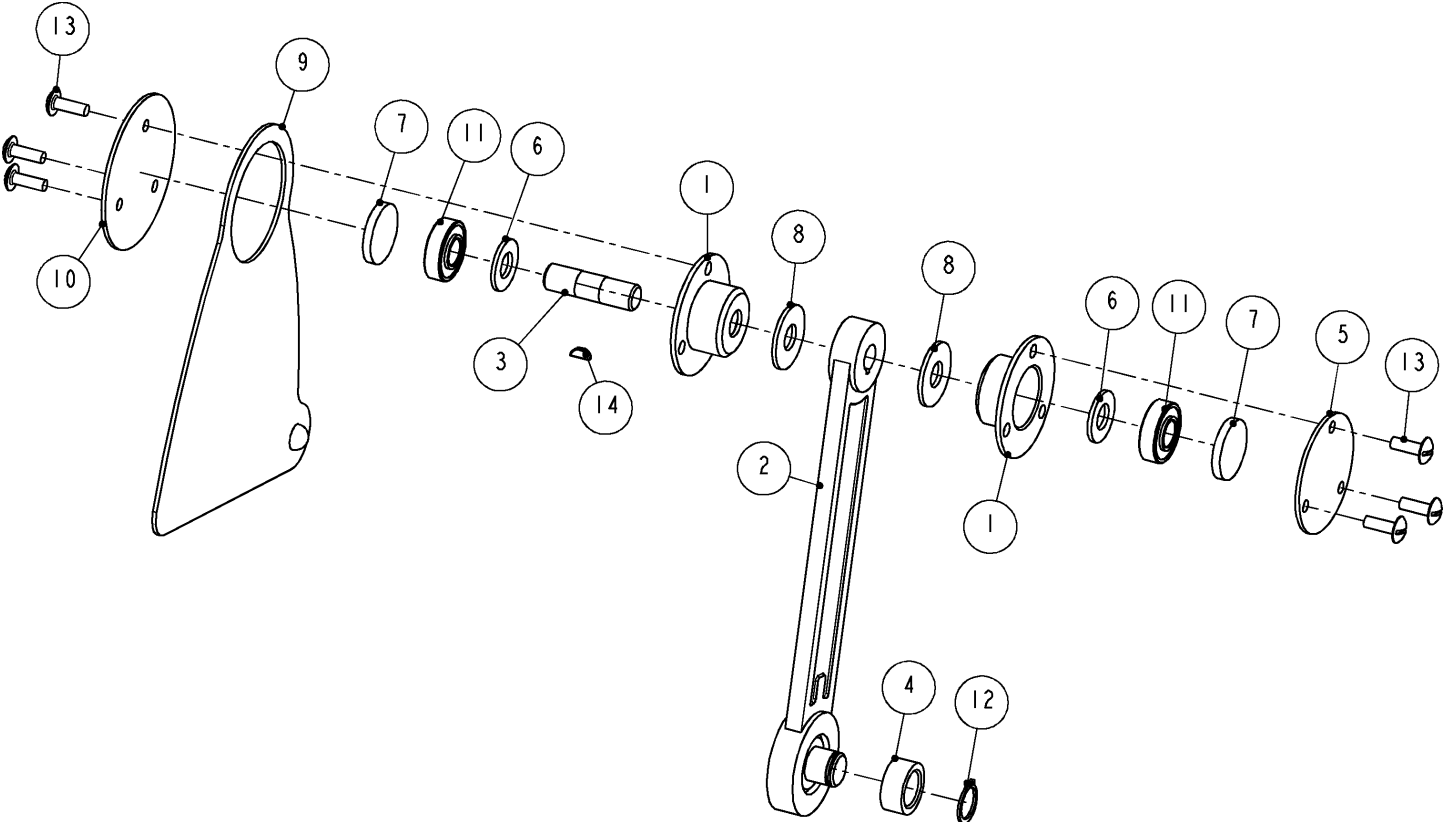
1503100: FRAME AND SUSPENSION ARM			
ITEM	PART #	DESCRIPTION	QTY
1	1200920	NUT	1
2	1500010	FRAME	1
3	1500270	FORWARD GUIDE BLOCK	1
4	1500280	REAR GUIDE BLOCK	1
5	1500290	COVER - BLADE SLIDE	1
6	1500450	THRUST PLATE	1
7	1500560	GUARD	1
8	1500611	PLATE, GUARD INDEX	1
9	1500620	SPRING	1
10	1500640	BONE GUIDE, FRONT	1
11	1500650	BONE GUIDE, REAR	1
12	1501080	SHIELD	1
13	1501120	COLLAR	1
14	1501940	SUSPENSION ARM ASSEMBLY	1
15	1501960	ROCKER ARM ASSEMBLY	1
16	1501970	TURN BOLT ASSEMBLY	1
17	6001430	BALL	3
18	8111080	SCREW	1
19	8211120	SCREW	2
20	8310100	SET SCREW	2
21	8450350	RIVET	2
22	8473180	BOLT	1
23	8477280	BOLT	1
24	8501130	NUT	1
25	8507150	WASHER	1
26	8631140	PIN	1

Figure 11 BOM FOR FRAME AND SUSPENSION ARM



1501960: ROCKER ARM ASSEMBLY			
ITEM	PART #	DESCRIPTION	QTY
1	1500080	ROCKER ARM	1
2	1500200	PIN	1
3	1500210	SHAFT	1
4	1500310	SPRING, BLADE PIN LOCK	1
5	1500320	PIN	1
6	3601200	BEARING	2
7	5001370	RETAINING RING	2
8	7016100	LUBE FITTING	1
9	7018400	CAP, LUBE FITTING	1
10	8211030	SCREW	1
11	8506100	WASHER	1
12	8705540	SHIM	2

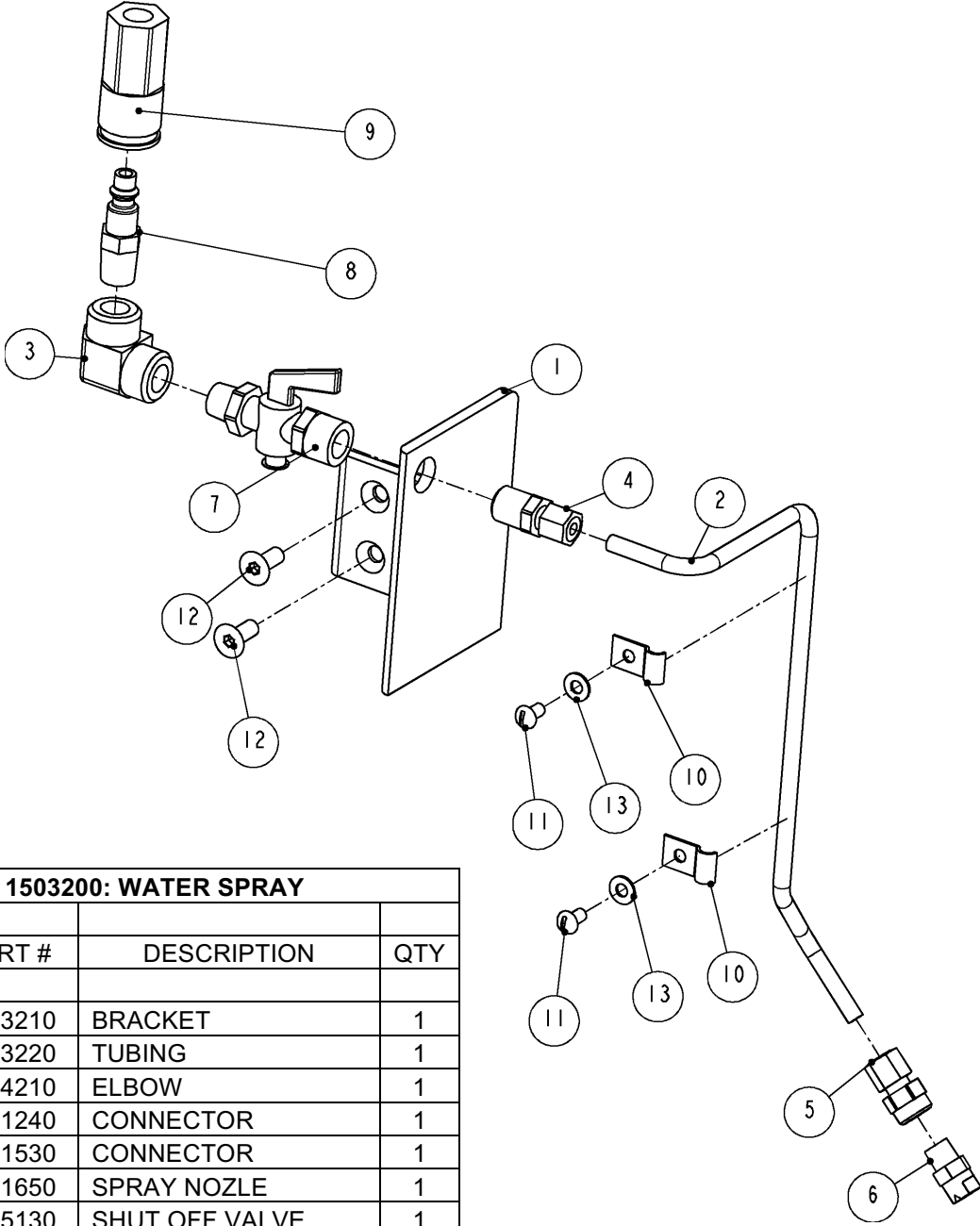
Figure 12 1501960: ROCKER ARM



1501940: SUSPENSION ARM ASSEMBLY			
ITEM	PART #	DESCRIPTION	QTY
1	1500380	CARTRIDGE	2
2	1500400	SUSPENSION ARM	1
3	1500410	SHAFT	1
4	1500430	BUSHING	1
5	1500470	COVER CARTRIDGE	1
6	1500480	WASHER	2
7	1500490	SLUG	2
8	1500500	WASHER	2
9	1500690	COVER	1
10	1500780	COVER CARTRIDGE	1
11	3601160	BEARING	2
12	5100500	RETAINING RING	1
13	8108040	SCREW	6
14	8600130	KEY	1

Figure 13 1501940: SUSPENSION ARM

WATER SPRAY

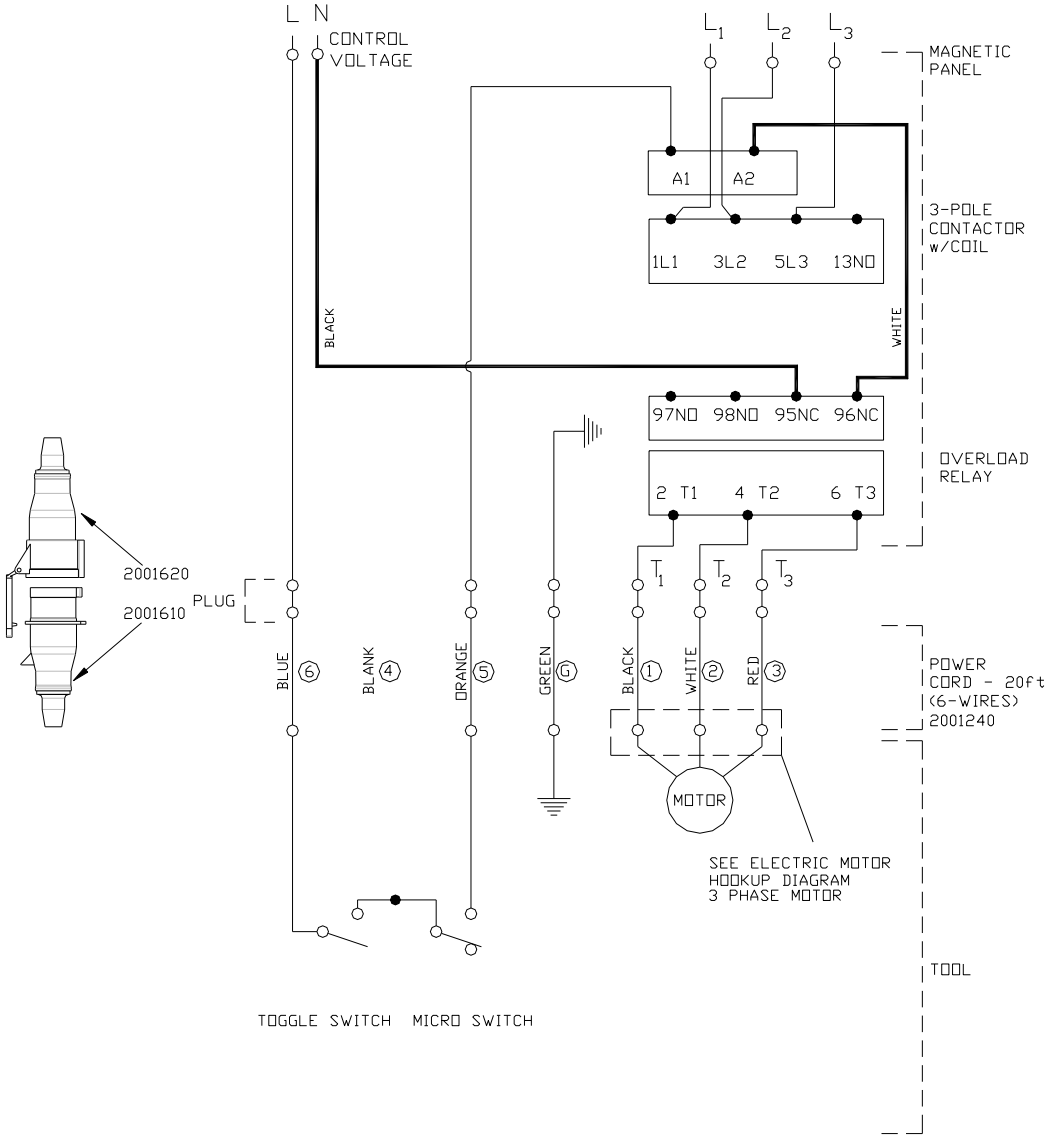


1503200: WATER SPRAY			
ITEM	PART #	DESCRIPTION	QTY
1	1503210	BRACKET	1
2	1503220	TUBING	1
3	7004210	ELBOW	1
4	7011240	CONNECTOR	1
5	7011530	CONNECTOR	1
6	7011650	SPRAY NOZLE	1
7	7025130	SHUT OFF VALVE	1
8	7034070	MALE PLUG	1
9	7034090	SOCKET	1
10	7904020	CLAMP	2
11	8029030	SCREW	2
12	8241050	SCREW	2
13	8505090	WASHER	2

Figure 14 1503200: WATER SPRAY

WIRING DIAGRAMS

3-PHASE, DIFFERENT CONTROL AND MOTOR VOLTAGE



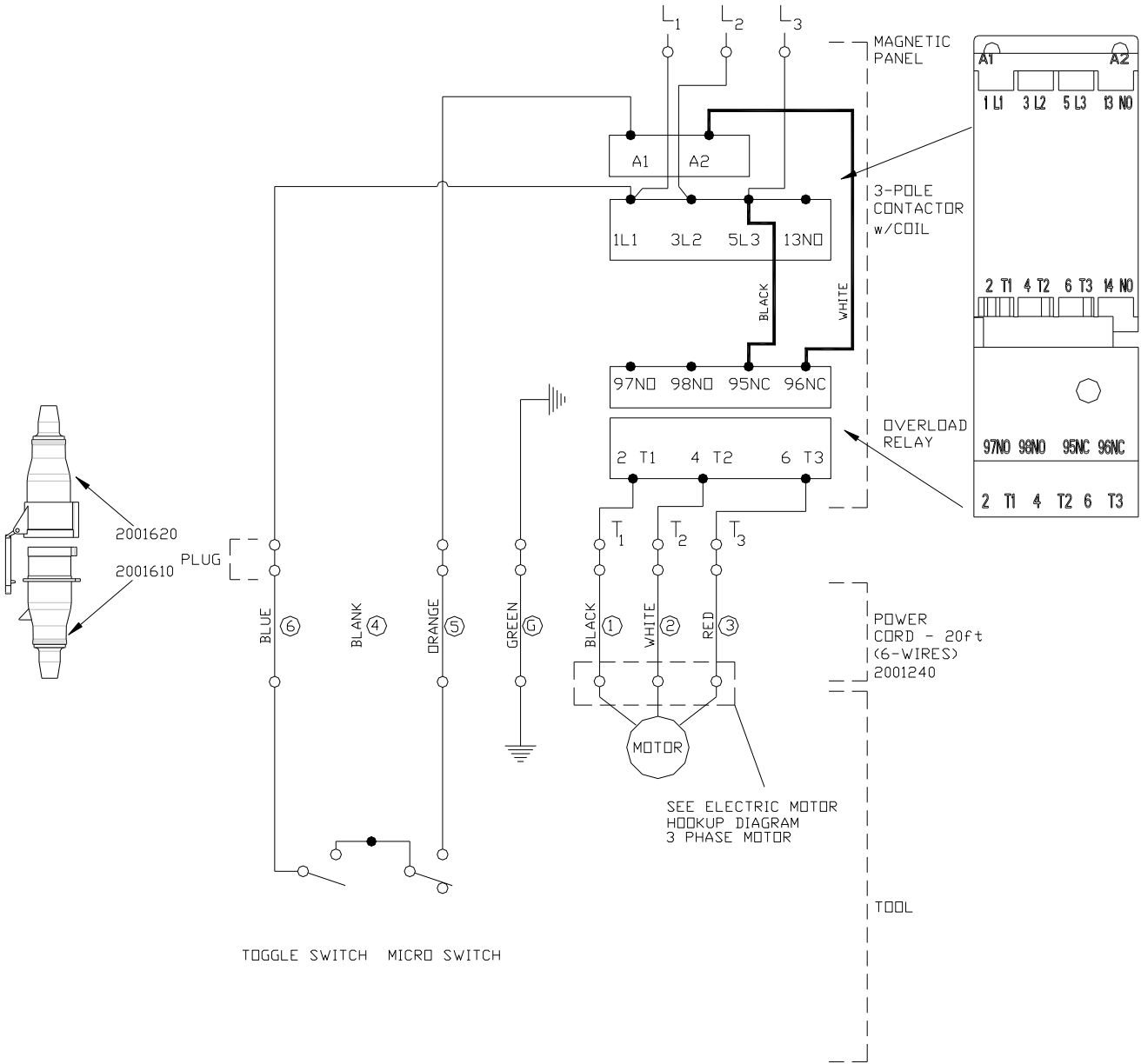
NOTES:

1. DO NOT ATTEMPT OR MAKE REPAIRS ON THE MACHINE WHILE POWER IS ON.
2. ALL ELECTRICAL WORK MUST BE PERFORMED BY A QUALIFIED ELECTRICIAN.
3. THE ELECTRICAL DIAGRAM SHOWS THE MACHINE IN THE "OFF" POSITION.
4. THE GROUND WIRE (GREEN) OF THE POWER CABLE IS CONNECTED TO THE FRAME OF THE MACHINE.

To obtain the correct Kentmaster part number for 3-pole contactor and overload relay, please contact the Kentmaster representative.

Figure 15 WIRING DIAGRAM – different control and motor voltage

3-PHASE, SAME CONTROL AND MOTOR VOLTAGE



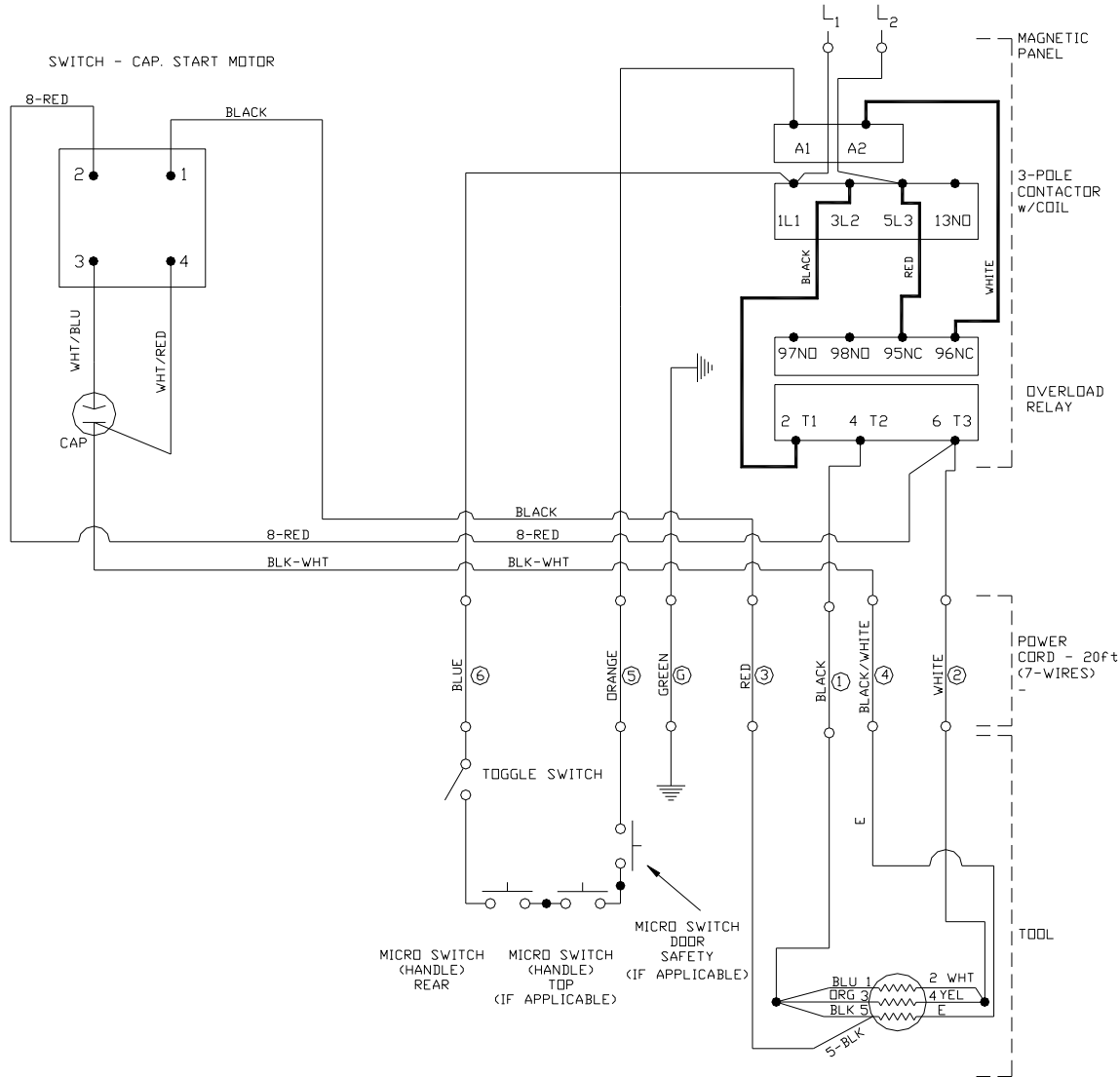
NOTES:

- 1. DO NOT ATTEMPT OR MAKE REPAIRS ON THE MACHINE WHILE POWER IS ON.
- 2. ALL ELECTRICAL WORK MUST BE PERFORMED BY A QUALIFIED ELECTRICIAN.
- 3. THE ELECTRICAL DIAGRAM SHOWS THE MACHINE IN THE "OFF" POSITION.
- 4. THE GROUND WIRE (GREEN) OF THE POWER CABLE IS CONNECTED TO THE FRAME OF THE MACHINE.

To obtain the correct Kentmaster part number for 3-pole contactor and overload relay, please contact the Kentmaster representative.

Figure 16 WIRING DIAGRAM – same control and motor voltage

SINGLE PHASE, 115 VOLT



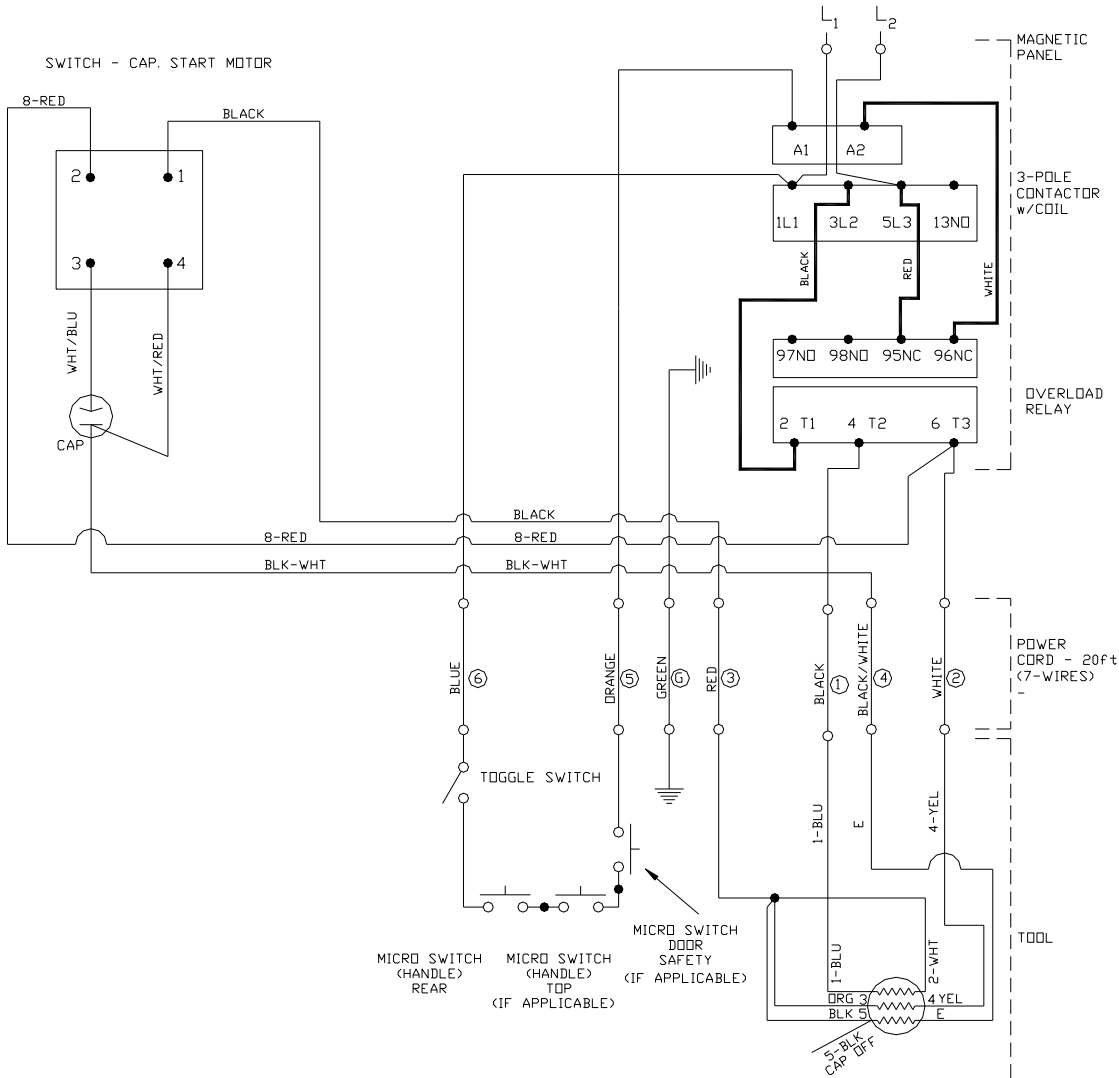
NOTES:

1. DO NOT ATTEMPT OR MAKE REPAIRS ON THE MACHINE WHILE POWER IS ON.
2. ALL ELECTRICAL WORK MUST BE PERFORMED BY A QUALIFIED ELECTRICIAN.
3. THE ELECTRICAL DIAGRAM SHOWS THE MACHINE IN THE "OFF" POSITION.
4. THE GROUND WIRE (GREEN) OF THE POWER CABLE IS CONNECTED TO THE FRAME OF THE MACHINE.

To obtain the correct Kentmaster part number for 3-pole contactor and overload relay, please contact the Kentmaster representative.

Figure 17 WIRING DIAGRAM – 115 VOLT, SINGLE PHASE

SINGLE PHASE, 230 VOLT



NOTES:

- 1. DO NOT ATTEMPT OR MAKE RAPAIRS ON THE MACHINE WHILE POWER IS ON.
- 2. ALL ELECTRICAL WORK MUST BE PERFORMED BY A QUALIFIED ELECTRICIAN.
- 3. THE ELECTRICAL DIAGRAM SHOWS THE MACHINE IN THE "OFF" POSITION.
- 4. THE GROUND WIRE (GREEN) OF THE POWER CABLE IS CONNECTED TO THE FRAME OF THE MACHINE.

To obtain the correct Kentmaster part number for 3-pole contactor and overload relay, please contact the Kentmaster representative.

Figure 18 WIRING DIAGRAM – 230 VOLT, SINGLE PHASE

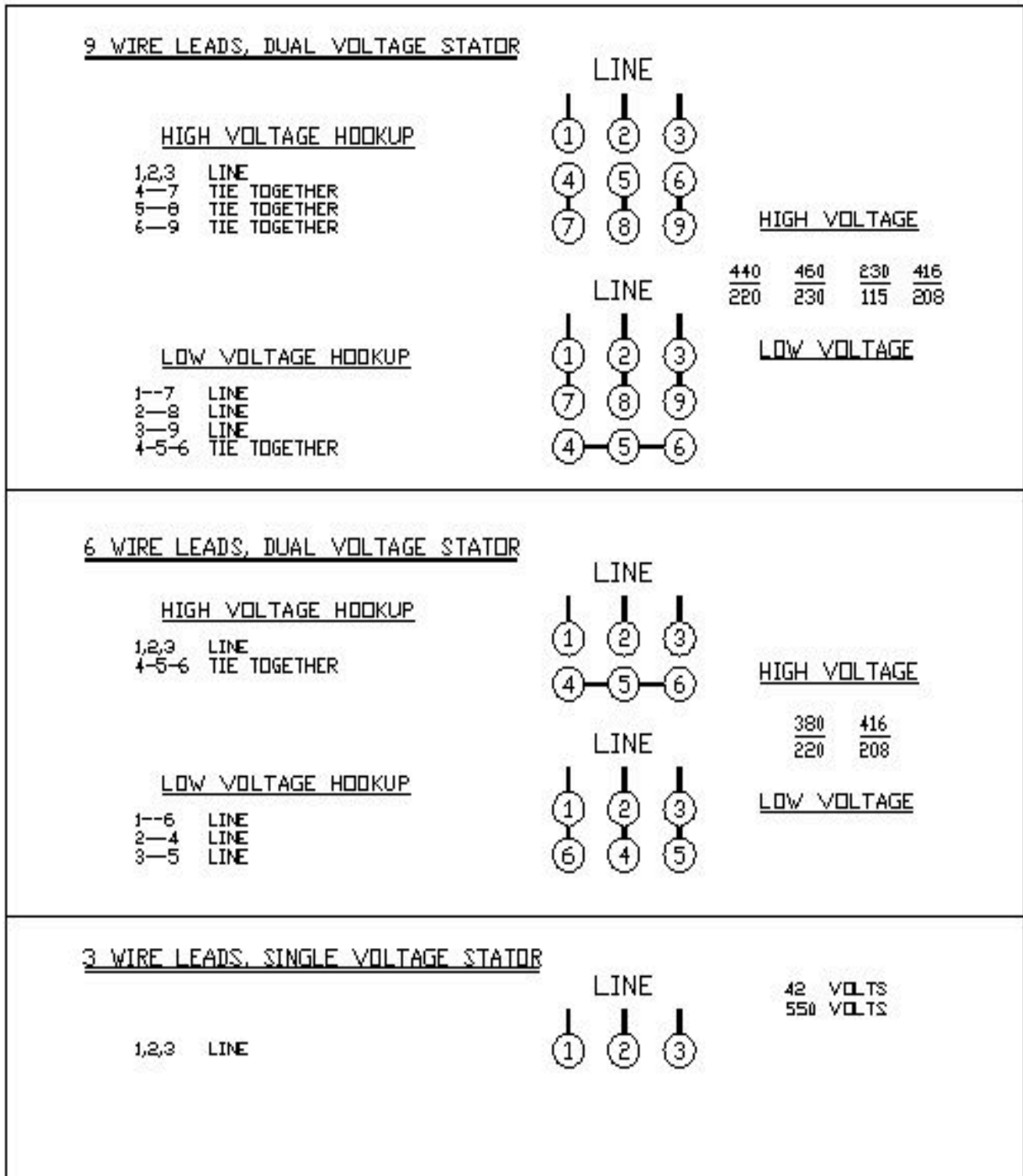
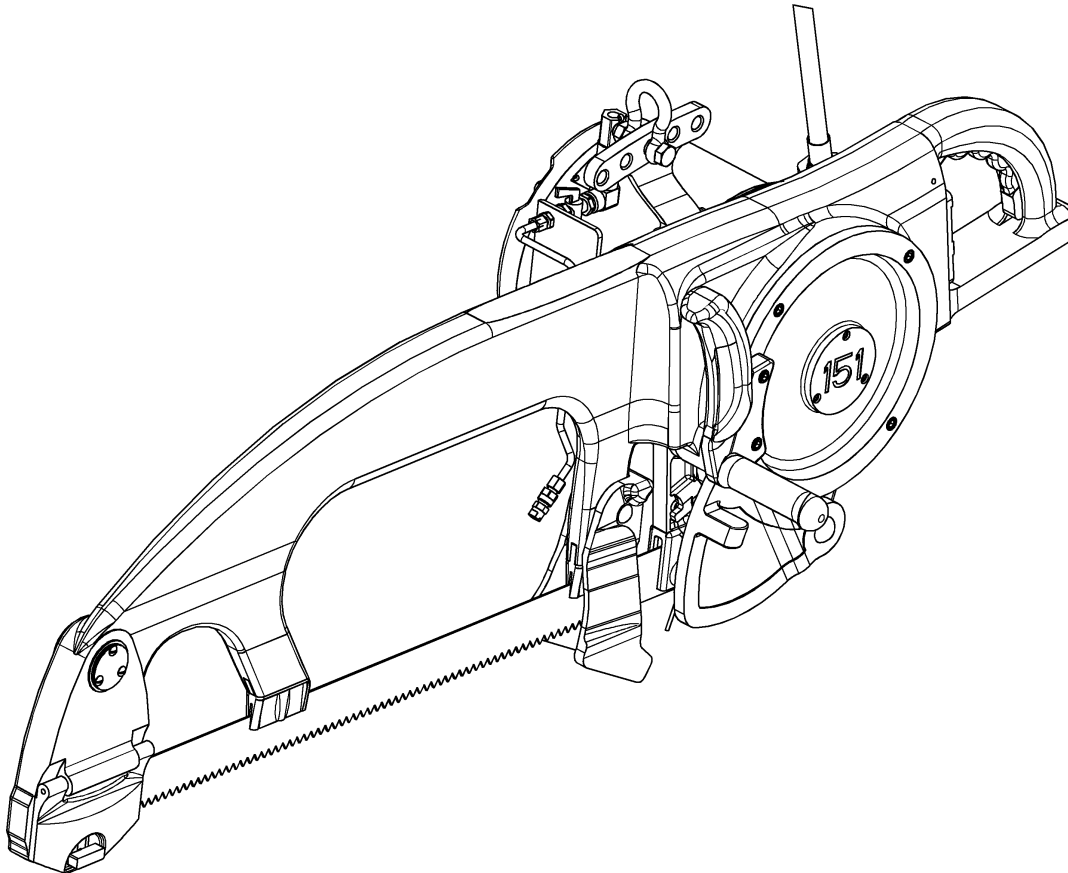


Figure 19 ELECTRIC MOTOR LEAD HOOKUP DIAGRAM 3 PHASE MOTOR

[ENGLISH]

GENERAL INFORMATION



MODEL
“151” BEEF SPLITTING SAW (150000)

SERVICE CENTERS

KENTMASTER EQUIPMENT (AUST)
UNIT 2/24 CENTRAL COURT
HILLCREST, QUEENSLAND, 4118
AUSTRALIA

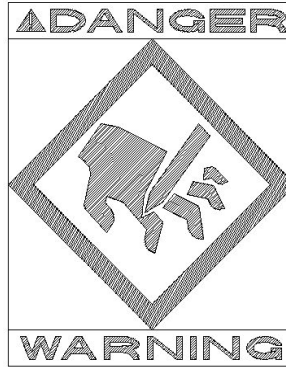
☎ TELEPHONE: +61 7 3806 8400
FAX: +61 7 3806 7933
E-MAIL: sales@kentmaster.com.au

KENTMASTER MFG. CO., INC.
1801 SOUTH MOUNTAIN AVE.
MONROVIA, CALIFORNIA 91016
UNITED STATES OF AMERICA

☎ TELEPHONE: (626) 359-8888
FAX: (626) 303-5151

NOTICE TO EMPLOYER AND PURCHASER OF TOOL
NOTICE TO SAFETY DIRECTOR

You have purchased a powerful tool that, if misused, can cause severe injury and harm to your employees. You must instruct your employees in the safe and proper use of this tool and to follow the safety procedures and instructions that have been supplied by the manufacturer of this tool. Please follow the following instructions.



1. Instruct tool operators to test the tool each day before using it to be sure it does not malfunction. Remove and repair any tool that malfunctions.
2. Instruct tool operators to immediately stop using a tool that malfunctions or is defective.
3. Instruct personnel to immediately remove all tools that malfunction. Be sure to disconnect tool from power supply.
4. Instruct all personnel to stay clear of tool, and not to stand or walk in front of, or next to tool when in use.
5. Point out to all personnel the dangers related to the misuse of tool and the importance of following safety procedures and instructions.
6. Do not make, or allow others to make, alterations or modifications to this tool. Replace all lost or illegible labels.
7. Follow all safety, installation and maintenance instructions provided with this tool. Establish proper safety procedures in accordance with local and national requirements to prevent accidental energizing of tool that can cause injuries.
8. If this tool is sold or change in ownership takes place, you must provide the new owner all safety instructions, notices and maintenance instructions you were originally provided. You can obtain additional copies of the instructions from Kentmaster, free of charge upon request.
9. Give copies of instructions to:
 - (A) Tool Operators**
 - (B) Maintenance Supervisor**
 - (C) Clean-up Supervisor**

GENERAL INFORMATION

COVERING: SAFETY PRECAUTIONS AND PLACING INTO SERVICE

**WARNING****ELECTRICAL POWERED BEEF SPLITTING SAW****READ THIS MANUAL CAREFULLY BEFORE INSTALLING, OPERATING OR SERVICING THIS TOOL**

IT IS THE RESPONSIBILITY OF THE EMPLOYER TO PLACE THIS INFORMATION INTO THE HANDS OF THE OPERATOR.

PLACING INTO SERVICE

= Hazards or unsafe practices which could result in severe personal injury, death or substantial property damage.

= Hazards or unsafe practices which could result in minor personal injury, product or property damage.

= Important installation, operation or maintenance information.

**WARNING****CAUTION****NOTICE**

Installation, adjustment repair and maintenance of this tool must be made by trained and qualified personnel.

Always disconnect power supply from tool before:

- (A) Installing or removing blade from tool.
- (B) Making repairs or adjustments to the tool.
- (C) performing maintenance or cleanup work.

**WARNING****WARNING****INSTALLATION INSTRUCTIONS**

ALL ELECTRICAL WIRING MUST BE DONE BY A LICENSED ELECTRICIAN IN ACCORDANCE WITH THE NATIONAL, STATE AND LOCAL ELECTRICAL CODES. (REFER TO NAMEPLATE ON TOOL FOR PROPER POWER CONFIGURATION).

1. A BALANCER IS REQUIRED FOR OPERATION AND USE OF THIS TOOL. WEIGHT OF TOOL MUST FALL WITHIN WEIGHT RANGE OF BALANCER. "AIR-BALANCERS" WHICH OPERATE ON COMPRESSED AIR, ARE HIGHLY RECOMMENDED FOR USE WITH "151" SAWS. THEY PROVIDE LONG TRAVEL AND VERY SMOOTH, UNIFORM RISE AND FALL. THEY CAN BE INTERFACED WITH THE OPERATION OF THE SAW.
2. INSTALL BALANCER ABOVE WORK AREA. BALANCER MUST HAVE SUFFICIENT VERTICAL TRAVEL SO OPERATOR CAN REACH ENTIRE WORK AREA WITH TOOL WITHOUT STRAIN. "151" SAW SHOULD BE HUNG FROM A RAIL PARALLEL TO THE TROLLEY TRAIL. THE DISTANCE FROM THE RAIL SHOULD BE 20 INCHES.
3. ADJUST BALANCER ACCORDING TO THE OPERATOR'S PREFERENCE AND COMFORT.

**WARNING**

WE STRONGLY SUGGEST THAT AN ADDITIONAL SAFETY CHAIN BE USED TO CHAIN BALANCER TO OVERHEAD TROLLEY. THIS ADDITIONAL MEASURE OF SAFETY WILL HELP REDUCE INJURIES.

**WARNING****OPERATING INSTRUCTIONS**

ONLY TRAINED PERSONNEL ARE TO OPERATE THIS TOOL.

WITH THE LEFT HAND FIRMLY ON FRONT HANDLE, PUSH DOWN ON THE REAR (CONTROL) HANDLE WITH YOUR RIGHT HAND AND PLACE SAW IN THE CROTCH OF THE CARCASS. START THE MACHINE AND CUT THROUGH THE TAILBONE. AS YOU CONTINUE DOWN THE CARCASS, PUSH THE SAW ALL THE WAY FORWARD AGAINST THE BACK OF THE CARCASS UNTIL YOU HAVE COMPLETED THE CUT.

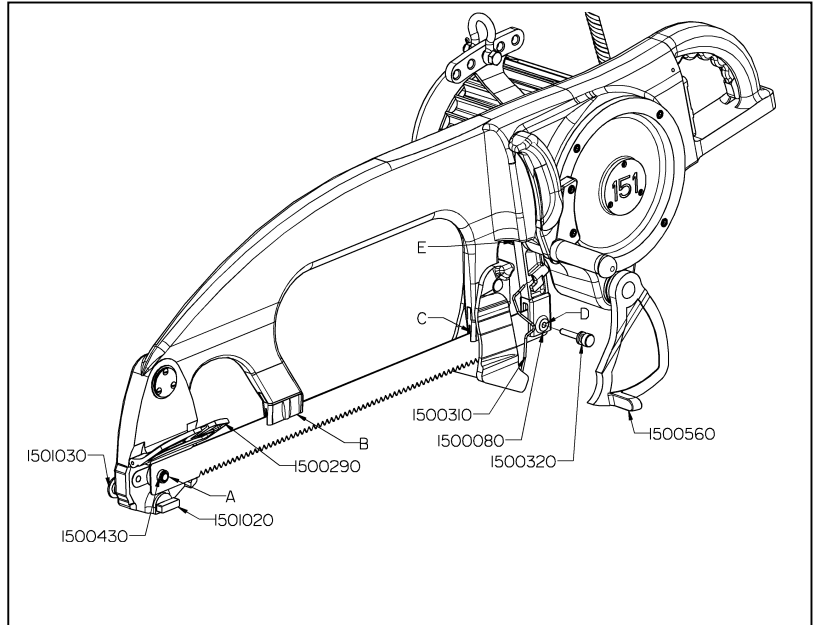
BY USING THE FRONT HANDLE WITH YOUR LEFT HAND AND TRIGGER CONTROL HANDLE WITH YOUR RIGHT HAND, YOU CAN MAKE ADJUSTMENTS SO AS TO STAY IN THE CENTER OF THE BACK-BONE BY LIFTING ON ONE SIDE AND PUSHING DOWN ON THE OTHER SIDE. AS THE OPERATOR BECOMES EXPERT WITH THE MACHINE, HE MY FIND INDIVIDUAL WAYS TO HANDLE THE SAW TO SUIT HIMSELF.

MAINTENANCE

ONLY TRAINED AND QUALIFIED PERSONNEL ARE TO PERFORM MAINTENANCE AND SERVICE TO THIS TOOL.

OIL LUBRICATION: THE BACK-FAT OF THE CARCASS PROVIDES SUFFICIENT LUBRICATION FOR THE BLADE GUIDES AND OIL LUBRICATION IS NOT NECESSARY WHEN MACHINE IS IN OPERATION. OIL LUBRICATION SHOULD BE APPLIED AT POINTS A, B, C AND D TO PREVENT OXIDATION AND CORROSION AFTER MACHINE HAS BEEN THOROUGHLY CLEANED AT THE END OF A NORMAL DAYS OPERATION, OR WHEN MACHINE IS NOT TO BE USED FOR AN EXTENDED PERIOD OF TIME.

GREASE LUBRICATION: GREASE LUBRICATION IS RECOMMENDED TWICE WEEKLY AT POINTS E. FOR APPLICATION OF GREASE LUBRICANT AT POINT E, GREASE FITTING IS ACCESSIBLE FROM THE MOTOR SIDE OF THE MACHINE. LUBRICATION OF POINT DESCRIBED ABOVE WILL INSURE PROPER OPERATION AND LONG BEARING LIFE OF YOUR "KENTMASTER 151 BEEF SPLITTING SAW".



CAUTION: DO NOT OVER GREASE.

RECOMMENDED BEARING GREASE LUBRICANT CAN BE PURCHASED FROM "KENTMASTER MFG., CO., INC."

BLADE REMOVAL AND CLEANING.

ALWAYS DISCONNECT POWER SUPPLY FROM TOOL BEFORE INSTALLING OR REMOVING BLADE FROM TOOL.

ALWAYS WEAR WIRE MESH GLOVES WHEN INSTALLING OR REMOVING BLADES FROM TOOL.

WARNING: TO INSTALL BLADE, ROTATE 1500560 GUARD – ROCKER ARM TO THE OPEN POSITION (SEE FIGURE ABOVE). UNLOCK 1500290 COVER – BLADE SLIDE BY PUSHING IN ON 1501030 PUSH KNOB AND TURNING 1501020 TURN BOLT PARALLEL TO SLOT ON 1500290 COVER. OPEN COVER – BLADE SLIDE AND MOUNT SAW BLADE ON 1500430 ROLLER – SUSPENSION ARM. INSERT OPPOSITE END OF SAW BLADE INTO THE SLOT OF 1500080 ROCKER ARM AND ALIGN HOLES OF ROCKER ARM AND SAW BLADE. INSERT 1500320 BLADE PIN THROUGH BOTH PARTS. PULL BACKON 1500310 SPRING AND SNAP IT INTO THE GROVE OF BLADE PIN. CLOSE 1500290 COVER AND LOCK BY TURNING 1501020 TURN BOLT ¼ TURN. TO REMOVE SAW BLADE FROM THE MACHINE, FOLLOW ABOVE PROCEDURE IN REVERSE.

DECLARATION OF CONFORMITY**DECLARATION OF CONFORMITY**DECLARATION DE CONFORMITE -DECLARACION DE CONFORMIDAD- ERKLARUNG BEZUGLICH EINHALTUNG DER VORSCHRIFTEN
DICHIARAZIONE DI CONFORMITA . CONFORMITEITSVERKLARING**MANUFACTURED BY:**FABRIQUE PAR:
FABRICADA POR:
HERGESTELLTVON:
FABBRICATO DA:
VERVAARDIGD DOOR:**KENTMASTER MFG CO., INC.**1801 SOUTH MOUNTAIN AVE.
MONROVIA, CALIFORNIA 91016
UNITED STATES OF AMERICA
TELEPHONE (626) 359-8888 FAX (626) 303-5151**TYPE / SERIES: BEEF SPLITTING SAW**TYPE / SERIE:
TIPO / SERIE:
TYP / SERIE:
TIPO / SERIE:
TYPE / SERIE:**MODEL: 151**MODELE:
MODELO:
MODELL:
MODELLO:
MODEL:**SERIAL NO. RANGE: XXXXX**

N SERIE: • GAMA DE No. DE SERIE: • SERIEN-NR.-BEREICH: • NUMERI DI SERIE: • SERIENUMMERS:

This product complies with the following European Community Directives:Ce produit est conforme aux directives de la Communauté européenne suivantes:
Este producto cumple con las siguientes Directrices de la Comunidad Europea:
Dieses Produkt erfüllt die folgenden Vorschriften der Europäischen Gemeinschaft:
Questo prodotto è conforme alle seguenti direttive CEE:
Dit produkt voldoet aan de volgende EG-richtlijnen:**89/392/EEC, 91/368/EEC, 93/44/EEC, 93/68/EEC****The following Standards were used to verify compliance with the Directives:**Les normes suivantes ont été utilisées pour vérifier la conformité avec les Directives:
Las siguientes Normas se usaron para verificar el cumplimiento de las Directrices:
Folgende Normen wurden angewandt, um Erfüllung der Vorschriften zu bestätigen:
Per verificare la conformità del prodotto alle direttive sono stati usati i seguenti standard:
De volgende normen zijn gebruikt om naleving van de richtlijnen te bevestigen:**EN 292****Approved by:** _____

RALPH KARUBIAN MONROVIA, CA. U.S.A

(Engineering Manager) (Directeur technique) (gerente de ingeniería) (verantwortlicher Konstruktionsleiter) (Responsabile tecnico) (ondersteunend technisch manager)

Date: AUG - 1 - 1995

Kentmaster Worldwide Location

Kentmaster Equipment (Aust) PTY.LTD.
Unit 2,24 Central Court
Hillcrest, Qld. 4118
Australia

Telephone: (07) 3806-8400

Fax: (07) 3806-7933

Australia@Kentmaster.com.au

Kentmaster do Brasil, Ltda.
Av. Dr. Joao Teodoro No. 805
Bairro De Vila Rezende
13405-240 Piracicaba, SP,
Brazil

Telephone #1: (019) 3 413 3113

Telephone #2: (019)983-4973

Fax: (019) 3 413 3113

Brazil@Kentmaster.com

Kentmaster (IRL) LTD.
Benamore, Dublin Road.
Roscrea,
CO, Tipperary,
Ireland

Telephone: (353) 0505-23292

Fax: (353) 0505-23299

Ireland@Kentmaster.com

Kentmaster Equipment (NZ) LTD.
5 Cooper Street
Havelock North
New Zealand

Telephone #1: (64) 6 8777 857

Telephone #2: 0800 KENTMASTER

Fax: (64) 6 8777 858

NewZealand@Kentmaster.com

Kentmaster South Africa (PTY) LTD.

Johannesburg - S. Africa
Unit 54 Sunnyrock Park
Sunrock Close, Germiston
South Africa

Telephone: (27) 11-455-3748

Fax: (27) 11-455-3749

SouthAfrica@Kentmaster.com

Kentmaster (UK) LTD.
Unit 16 Avonbank Ind. Centre
West Town Rd, Avonmouth-Bristol,
BS11 9DE
England

Telephone: (44) 117-923-5035

Fax: (44)-117-932-9010

UK@Kentmaster.com

Kentmaster Mfg. Co., Inc.
1801 South Mountain Ave.
Monrovia, CA, 91016
USA

Telephone #1: (626) 359-8888

Telephone #2: (800) 421-1477

Fax: (626) 303-5151

info@Kentmaster.com

Kentmaster Omaha
4417 South 139th Street
Omaha, NE, 68137
USA

Telephone #1: (402) 896-3355

Telephone #2: (800) 367-3181

Fax: (402) 896-3311

Omaha@Kentmaster.com

INDEX

OPERATING AND SAFETY INSTRUCTIONS 2

SERVICE 3

PARTS BOOK..... 3

“151” MAIN ASSEMBLY 3

MOTOR ASSEMBLY 6

POWER SUPPLY 8

FRAME & YOKE..... 11

WATER SPRAY 15

WIRING DIAGRAMS 16

 3-PHASE, DIFFERENT CONTROL AND MOTOR VOLTAGE 16

 3-PHASE, SAME CONTROL AND MOTOR VOLTAGE..... 17

 SINGLE PHASE, 115 VOLT 18

 SINGLE PHASE, 230 VOLT 19

GENERAL INFORMATION..... 22

INSTALLATION INSTRUCTIONS 23

OPERATING INSTRUCTIONS..... 23

MAINTENANCE..... 24

DECLARATION OF CONFORMITY..... 25

Kentmaster Worldwide Location 26

INDEX..... 27

FIGURES - INDEX..... 28

FIGURES - INDEX

Figure 1 MODEL "151" 4
 Figure 2 BOM FOR MODEL "151" 5
 Figure 3 MOTOR ASSEMBLY 6
 Figure 4 BOM FOR MOTOR ASSEMBLY 7
 Figure 5 1502410, 1502420: ROTOR –SHAFT ASSEMBLY 8
 Figure 6 1002420: POWER SUPPLY, NON 42V, 3 PHASE 8
 Figure 7 1002430: POWER SUPPLY, 42V, 3 PHASE 9
 Figure 8 1002428: POWER SUPPLY, 115V / 230V, SINGLE PHASE 9
 Figure 9 1502140: SWITCH PLATE ASSEMBLY 10
 Figure 10 1503100: FRAME AND SUSPENSION ARM 11
 Figure 11 BOM FOR FRAME AND SUSPENSION ARM 12
 Figure 12 1501960: ROCKER ARM 13
 Figure 13 1501940: SUSPENSION ARM 14
 Figure 14 1503200: WATER SPRAY 15
 Figure 15 WIRING DIAGRAM – different control and motor voltage 16
 Figure 16 WIRING DIAGRAM – same control and motor voltage 17
 Figure 17 WIRING DIAGRAM – 115 VOLT, SINGLE PHASE 18
 Figure 18 WIRING DIAGRAM – 230 VOLT, SINGLE PHASE 19
 Figure 19 ELECTRIC MOTOR LEAD HOOKUP DIAGRAM 3 PHASE MOTOR 20