

**DIECI**  
AUSTRALIA

TRUCK MIXERS | L4700 | F7000







## TRUCK MIXERS

### POWERFUL HYDROSTATIC MIXERS ENGINEERED FOR INTENSIVE USE

With the needs of construction sites constantly changing and a large focus on reducing management costs and improving vehicle productivity, Dieci has invested in delivering a range of Truck Mixers that match the evolving requests of our customers.

Designed with the same Italian quality as our telehandlers, the Dieci range of Truck Mixers offer robust construction and industry standard components. Built with the **Dieci PX off-road chassis**, these machines have proven their tough off-road capabilities against Australia's harshest environments.

With over half a century of experience as evidence of great reliability, Dieci Truck Mixers are ideal for use in tunnelling, mining, infrastructure, remote or regional sites, and where concrete or similar materials are required.

The Dieci Truck Mixer range includes the L4700 and F7000 models, both optionally equipped with a self-loading shovel. They offer concrete yields ranging from 3.5 m<sup>3</sup> to 5.0 m<sup>3</sup> to suit various applications.

## ABSOLUTE COMFORT: ITALIAN DESIGN AND STYLE

Comfort is the first thing you notice on board a Dieci Truck Mixer. The thoughtfully arranged controls make operation straightforward, easy and comfortable.

### Strong & Stable

Maximum stability and traction with tyres suitable for all terrains - this range has 4 wheel steer and 4 wheel drive. Equipped with 2 speed servo controlled reduction gearbox and a hydrostatic drive system, ensuring precision movement, maximum speed and plenty of torque when required.

### Total Visibility

Reversible driving seat and controls with large curved windows of the cab provide a complete 360° view, ensuring uninterrupted visibility and enhanced operator awareness and safety.

### Durable Mixing Drum

The thick steel of the mixing drum ensures dimensional stability and long-lasting durability. The spiral blade design guarantees consistent, homogeneous mixing throughout. The hydraulically controlled chute system allows precise and effortless pouring of concrete, ensuring efficient and accurate placement.

### Wet Brake System

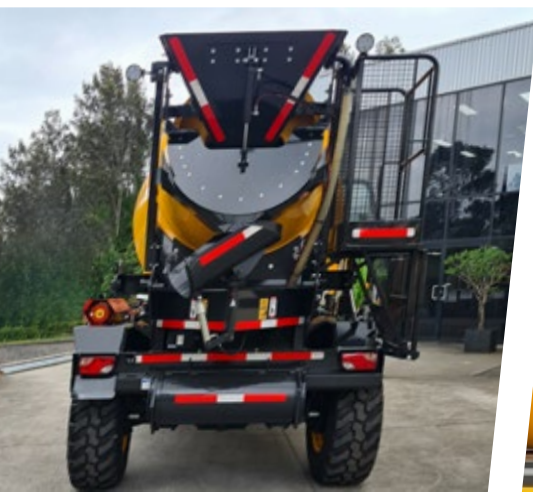
The front and rear wet brake system is perfect for tunnelling and mining applications, eliminating spark risk, staying clean from contaminants, and benefiting from cooling and lubrication to reduce wear and prevent warping.

### Hydrostatic Transmission

Complete with a servo controlled 2 speed gear box and constantly varying hydrostatic drive, which guarantees top-end speed and low-end torque.

### Optional Self Loading Shovel

The self-loading shovel allows for total self-sufficiency in the mixture preparation, even in places far from a concrete loading centre for refilling.





# Mixer L4700

**3.5m<sup>3</sup>**  
Concrete Yield

**630 L**  
Water Tank Capacity

**99hp / 74kW**  
Nominal Power

## Safe & Comfortable CAB

Approved ROPS - FOPS cab with powerful air conditioning for perfect air circulation, sound proofing, adjustable steering wheel and air suspension seat. Equipped with a double folding door making it the widest door on the market, accessing the driving position is easier and safe.

## All Road

4-wheel drive and 2-wheel steer, 4-wheel steer and crab mode facilitate manoeuvring in tunnels, mines or on construction sites with limited space.

## Efficient Hopper

The hopper facilitates the settling phases in the concrete mixer plants. Simple geometries for maximum efficiency and functionality during the loading phase, ensure a smooth pour.

## Water System

The suction system draws water from the integrated tanks, protected against accidental impacts. The great amount of water available is simply managed by the easy-to-read litre metre.

## Reversible Driving Seat

Equipped with a 180° swivel seat, the Dieci range of Truck Mixers are the perfect solution for restricted access in tunnelling and mining applications. Paired with reversible steering direction control which allows the steering wheel and wheels to work in sync when the seat is reversed 180°.

## Easy Control

Drum rotation control is accessible from two ground-level workstations, enhancing efficiency and safety by allowing adjustments and monitoring from multiple vantage points.

## Inching Pedal

An essential control that allows travel speed to momentarily slow down or come to a stop to increase precision and productivity for delicate operations.

## Enhanced Mixing Capabilities

The independent hydraulic circuit for drum rotation ensures maximum mixing performance, maintaining a high quality mix and enhancing efficiency for demanding concrete operations.



# Mixer F7000

**5.0m<sup>3</sup>**  
Concrete Yield

**850 L**  
Water Tank Capacity

**125hp / 93kW**  
Nominal Power



TECHNICAL DATA

PERFORMANCE	L4700	L4700 T	F7000	F7000 T
Concrete yield	3.5 m³	3.5 m³	5 m³	5 m³
Water tank	630 l	630 l	850 l	850 l
Shovel capacity	600 l	-	600 l	-
Max climb angle	-	-	30 %	30 %
Unladen weight	6,700 kg	6,800 kg	7,400 kg	7,400 kg
Max speed	23 km/h	24 km/h	27 km/h	27 km/h
Notes	Self-priming water pump	Self-priming water pump and loading from hopper	Self-priming water pump	Self-priming water pump and loading from hopper

ENGINE	L4700	L4700 T	F7000	F7000 T
Brand	FPT	FPT	FPT	FPT
Nominal power / @ rpm	99 hp / 74 kW @ 2,200	99 hp / 74 kW @ 2,200	125 hp / 93 kW @ 2,200	125 hp / 93 kW @ 2,200
Operation	4-stroke / diesel	4-stroke / diesel	4-stroke / diesel	4-stroke / diesel
Injection	Mechanical direct	Mechanical direct	Mechanical direct	Mechanical direct
Cylinders	4, vertical inline	4, vertical inline	4, vertical inline	4, vertical inline
Displacement	4,485 cm³	4,485 cm³	4,485 cm³	4,485 cm³
Emission standard	Stage IIIA/Tier 3	Stage IIIA/Tier 3	Stage IIIA/Tier 3	Stage IIIA/Tier 3
Cooling	Liquid	Liquid	Liquid	Liquid
Intake	Turbocharger after-cooler	Turbocharger after-cooler	Turbocharger after-cooler	Turbocharger after-cooler

TRANSMISSION	L4700	L4700 T	F7000	F7000 T
Type	Hydrostatic with variable displacement pump	Hydrostatic with variable displacement pump	Hydrostatic with variable displacement pump	Hydrostatic with variable displacement pump
Hydraulic motor	Hydrostatic with continuous automatic adjustment	Hydrostatic with continuous automatic adjustment	Hydrostatic with continuous automatic adjustment	Hydrostatic with continuous automatic adjustment
Reversal	Electro-hydraulic	Electro-hydraulic	Electro-hydraulic	Electro-hydraulic
Inching control	With hydraulic pedal for controlled forward movement	With hydraulic pedal for controlled forward movement	With hydraulic pedal for controlled forward movement	With hydraulic pedal for controlled forward movement
Gearbox	Servo-controlled 2-speed	Servo-controlled 2-speed	Servo-controlled 2-speed	Servo-controlled 2-speed

HYDRAULIC SYSTEM	L4700	L4700 T	F7000	F7000 T
Hydraulic pump type	Closed-loop axial piston pump with drum rotation speed controller	Closed-loop axial piston pump with drum rotation speed controller	Closed-loop axial piston pump with drum rotation speed controller	Closed-loop axial piston pump with drum rotation speed controller

DRUM	L4700	L4700 T	F7000	F7000 T
General information	Rear front exhaust. Closed-loop axial piston pump with drum rotation speed controller	Rear front exhaust. Closed-loop axial piston pump with drum rotation speed controller	Rear front exhaust. Closed-loop axial piston pump with drum rotation speed controller	Rear front exhaust. Closed-loop axial piston pump with drum rotation speed controller
Gearbox	Coaxial hydraulic gear motor	Coaxial hydraulic gear motor	Coaxial hydraulic gear motor	Coaxial hydraulic gear motor

TANK CAPACITIES	L4700	L4700 T	F7000	F7000 T
Hydraulic tank	120 l	120 l	120 l	120 l
Complete hydraulic system	145 l	145 l	145 l	145 l
Diesel tank	90 l	90 l	90 l	90 l

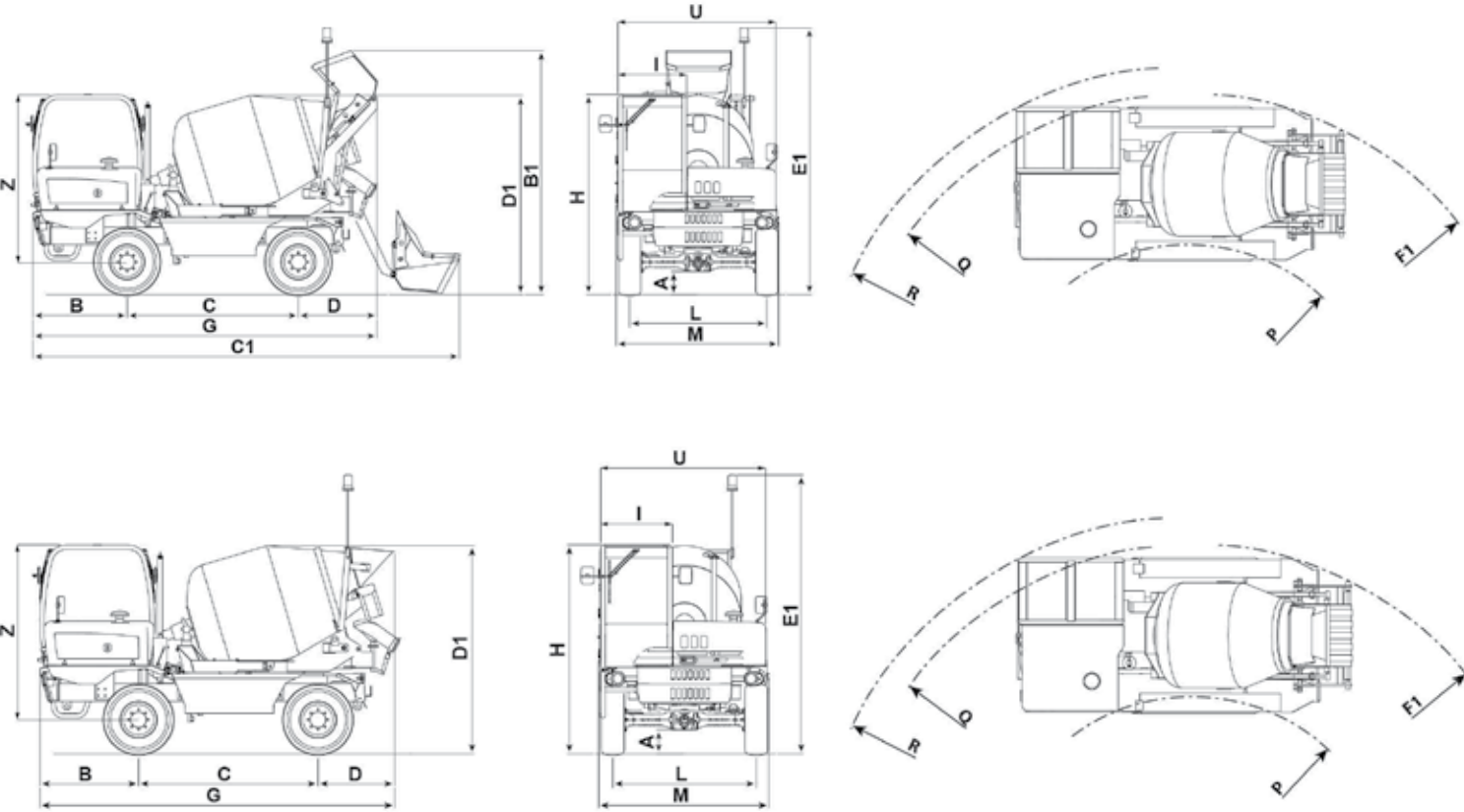
TYRES	L4700	L4700 T	F7000	F7000 T
Size	405/70x20"	405/70x20"	405/70x24"	405/70x24"

TRUCK MIXERS

L4700 | F7000

DIFFERENTIAL AXLES	L4700	L4700 T	F7000	F7000 T
Steering axles	2 steering, with 4 epicyclodial reduction gears	2 steering, with 4 epicyclodial reduction gears	2 steering, with 4 epicyclodial reduction gears	2 steering, with 4 epicyclodial reduction gears
Type of steering	4 wheels / transversal / 2 wheels	4 wheels / transversal / 2 wheels	4 wheels / transversal / 2 wheels	4 wheels / transversal / 2 wheels
Service brake	Oil bath on front and rear axle	Oil bath on front and rear axle	Oil bath with servo brake on front and rear axle	Oil bath with servo brake on front and rear axle
Park brake	Acting on the rear axle	Acting on the rear axle	Acting on the front axle	Acting on the front axle

DIMENSIONS	L4700	L4700 T	F7000	F7000 T
A	360 mm	360 mm	410 mm	410 mm
B	1,380 mm	1,380 mm	1,215 mm	1,215 mm
B1	3,820 mm	-	3,850 mm	-
C	2,500 mm	2,500 mm	3,210 mm	3,210 mm
C1	6,660 mm	-	7,490 mm	-
D	1,640 mm	1,410 mm	2,050 mm	1,675 mm
E1	4,070 mm	4,070 mm	4,000 mm	4,000 mm
F1	5,590 mm	5,340 mm	6,450 mm	6,450 mm
G	5,520 mm	5,590 mm	6,475 mm	6,100 mm
H	3,140 mm	3,140 mm	3,050 mm	3,050 mm
I	1,000 mm	1,000 mm	1,000 mm	1,000 mm
L	1,980 mm	1,980 mm	1,920 mm	1,920 mm
M	2,400 mm	2,400 mm	2,370 mm	2,370 mm
P	3,000 mm	3,000 mm	3,750 mm	3,750 mm
Q	5,370 mm	5,370 mm	6,020 mm	6,020 mm
R	5,740 mm	5,740 mm	6,370 mm	6,370 mm
U	2,310 mm	2,310 mm	2,310 mm	2,310 mm
Z	2,440 mm	2,440 mm	2,500 mm	2,500 mm





## NEW SOUTH WALES

Sydney Branch

1/5 Melito Court,  
Prestons, NSW 2170

## WESTERN AUSTRALIA

Perth Branch

32 Allott Way,  
Maddington, WA 6109

## VICTORIA

Melbourne Branch

169 Studley Court,  
Derrimut, VIC 3026

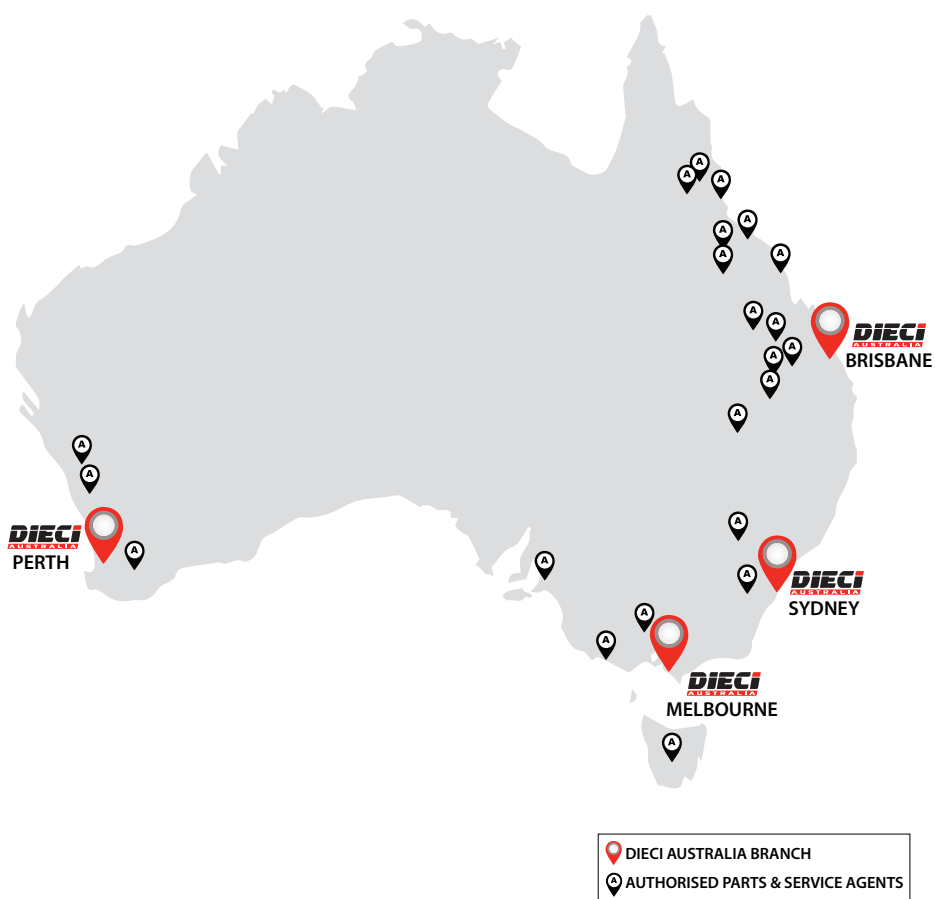
## QUEENSLAND

Brisbane Branch

1/7 Australand Drive,  
Berrinba, QLD 4117

Brisbane North Branch

69 Griffin Crescent,  
Brendale, QLD 4500



[www.dieciaustralia.com.au](http://www.dieciaustralia.com.au) | ph: 1300 888 479 | [sales@dieciaustralia.com.au](mailto:sales@dieciaustralia.com.au)

Distributed by Dieci Australia

Illustrations and photos show the standard international models and may or may not include optional equipment, accessories, customer installed or modified parts, optional parts and all standard equipment with some differences in colour and features. Machine specifications are subject to change without notice and additional load charts and machine or attachment specifications may be available on request. Please refer to the user and maintenance manuals located on Dieci Australia's website for correct machine and attachment operation.

Printed in Australia

V1125