

# VAR 6-250 FKL29 - 3 CYL SKID02

Diesel - 90 l/s - Hmax 27.5 m



Indicative picture of the product

## VAR - Self-priming centrifugal pumps

These self-priming centrifugal pumps are for applications where the main feature is the difficulty in priming. Even with suction heights of several meters the machine quickly evacuates the air from the suction pipe and starts pumping. Additionally, thanks to the semi-open impeller, the VAR range is also suitable for pumping liquids with solids in suspension.

## Applications

Both Atlas Copco and Varisco have decades of experience in designing and producing pumps. We have put those years of expertise into providing a solutions portfolio that works across multiple applications. The VAR range is packed with features that not only meet, but exceed the needs of the market. We are focused on an efficient, extremely versatile pump that is suitable for many industries, including construction, general dewatering and emergency applications, such as flood clean up.

## Benefits

### Rapid "dry" priming

Without foot valve up to a height of 7.5 m (24.5 ft)

### High resistance

To abrasive liquids and turbid sandy waters

### Semi-open impeller

Solids handling up to 76 mm (3")

### Easy maintenance

Removable front cover for direct access to the impeller

### Wear plate

Cast iron (G11 rubber lined) or stainless steel wear plates, that are easily replaceable

# VAR 6-250 FKL29 SKID02

## Performance curves

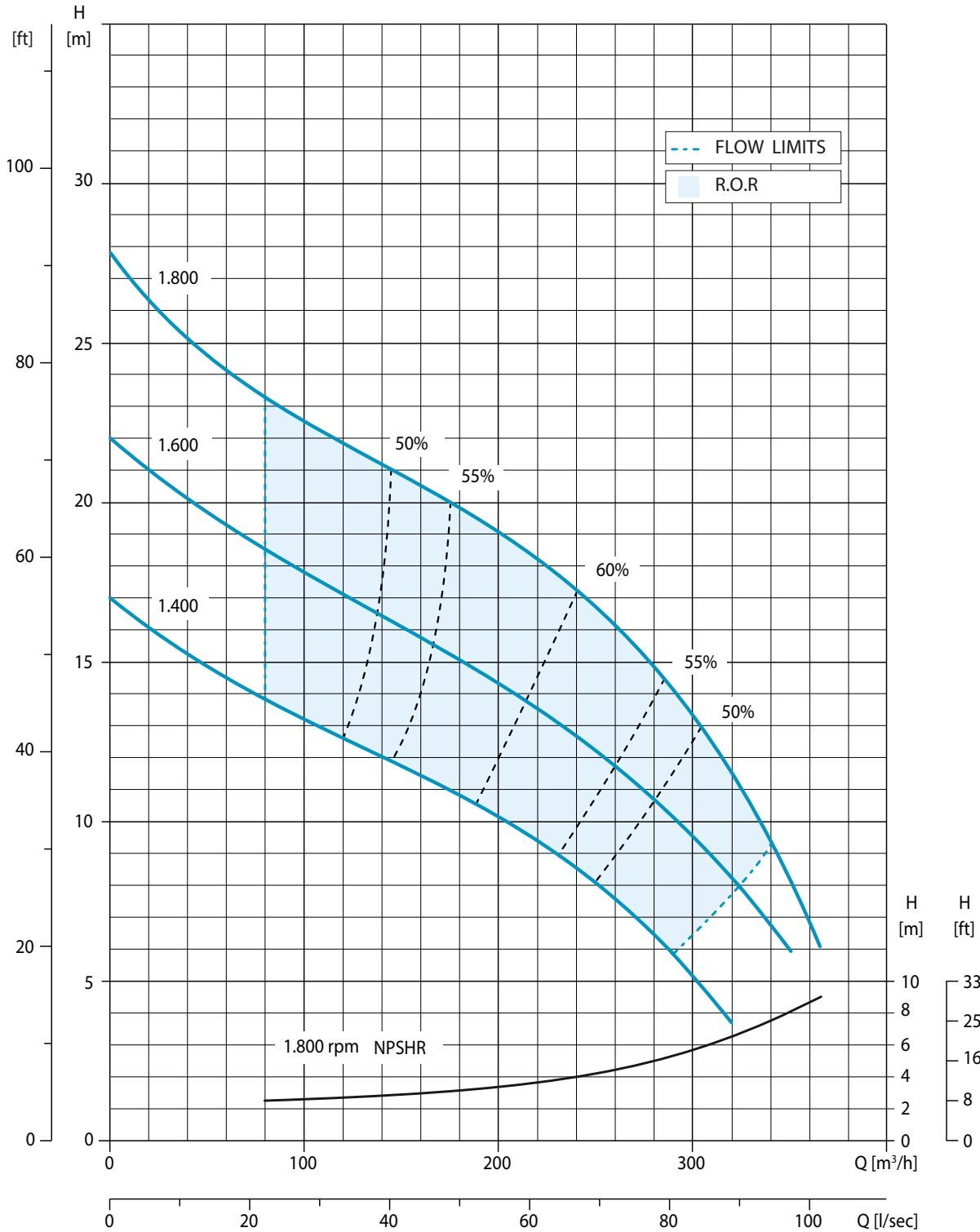
Test according to UNI EN ISO 9906 standard - level 2

Test liquid: clean water, density 1,000 kg/m<sup>3</sup>

Losses from check valve not included

Spherical solids handling: D.76 mm (3")

Max absorbed power: 25,0 kW - 33.5 HP (2.000 rpm)



# VAR 6-250 FKL29 SKID02

## Technical data

### Pump

<b>Model</b>	<b>VAR 6-250</b>	
<b>Qmax</b>	90 l/s - 340 m <sup>3</sup> /h - 5.400 l/min (1,426 USgpm)	
<b>Hmax</b>	27,5 m (118 ft)	
<b>Q max eff.</b>	67 l/s - 240 m <sup>3</sup> /h - 4.020 l/min (1,060 USgpm)	
<b>Eff. max</b>	60 %	
<b>Suction port</b>	Flanged - 150 TABLE E (AS 2129)	
<b>Delivery port</b>	Flanged - 150 TABLE E (AS 2129)	
<b>Impeller type</b>	Semi-Open, 2 vane	
<b>Solids handling</b>	76 mm (3.0 ")	
<b>Material</b>	<b>G11</b>	<b>F11</b>
<b>Casing</b>	EN-GJL-200 cast iron	EN-GJL-200 cast iron
<b>Impeller</b>	EN-GJS-400 ductile iron	CF8M stainless steel
<b>Wear plates</b>	EN-GJL-200 rubber lined cast iron	CF8M stainless steel
<b>Number of plates</b>	2	2
<b>Shaft</b>	39NiCrMo3 steel	SAF 2205 stainless steel
<b>Flushing</b>	Yes	Yes
<b>Mechanical seal</b>	Silicon carbide / Silicon carbide	Silicon carbide / Silicon carbide
<b>Elastomers</b>	NBR	VITON

### Engine

<b>Make</b>	<b>Kohler</b>			
<b>Model</b>	KDI 1903M (KL29)			
<b>Type</b>	Diesel direct injection, aspirated			
<b>Displacement</b>	1.861 cm <sup>3</sup> (114 in <sup>3</sup> )			
<b>No. cylinders</b>	3			
<b>Cooling</b>	Liquid with radiator			
<b>Rpm type</b>	Variable			
<b>Standard speed</b>	1.800 rpm			
<b>EU emissions</b>	2002/88/CE Stage IIIA			
<b>US emissions</b>	EPA Tier 3			
<b>Starting</b>	Electric			
<b>Starting voltage</b>	12 V			
<b>Speed [rpm]</b>	<b>1200</b>	<b>1400</b>	<b>1600</b>	<b>1800</b>
<b>Consumption [l/h]</b>	3,5	4,4	5,1	5,4
<b>Power [kW]</b>	13,5	17,6	20,3	21,6
<b>Power [HP]</b>	18.1	23.6	27.2	29

### Control panel

<b>Model</b>	<b>PW250 (PW1)</b>
	Manual operation
	Automatic operation: start-stop with floats
	Digital display with 6 languages (IT,EN, FR, DE, ES, PT) with:
	Hour meter, Rev counter,
	Battery voltmeter, Fuel level (%)
	Automatic engine shutdown in case of:
	- low oil pressure
	- water overheating
	- low battery voltage
	(engine failure alarms with LED lights and display message)
	Emergency stop button
	Throttle rod
	(PW1 FleetLink control as option)

# VAR 6-250 FKL29 SKID02

## Arrangement

### Technical data

Material	S275JR EN 10025-2 carbon steel
Coatings	Epoxy powder, average thickness of 80 µm
Color	Yellow and grey Atlas Copco (standard)
Features	Painted steel base. Hot dip galvanised steel skid and lifting beam. Lockable battery box. Fuel level indicator.
Battery	Acid charge Pb-Ca maintenance free 12 V - 100 Ah - 400 A
Tank	300 l (79.3 USG)
Locking keys	Fuel cap

### SKID02 VAR 6-250



Dimensions	1070 x 2220 x 1670 mm 42 x 87 x 66 "
H suction port	0,96 m (3.1 ft)
Dry weight	925 kg (2,040 lb)