

**PICOpro**

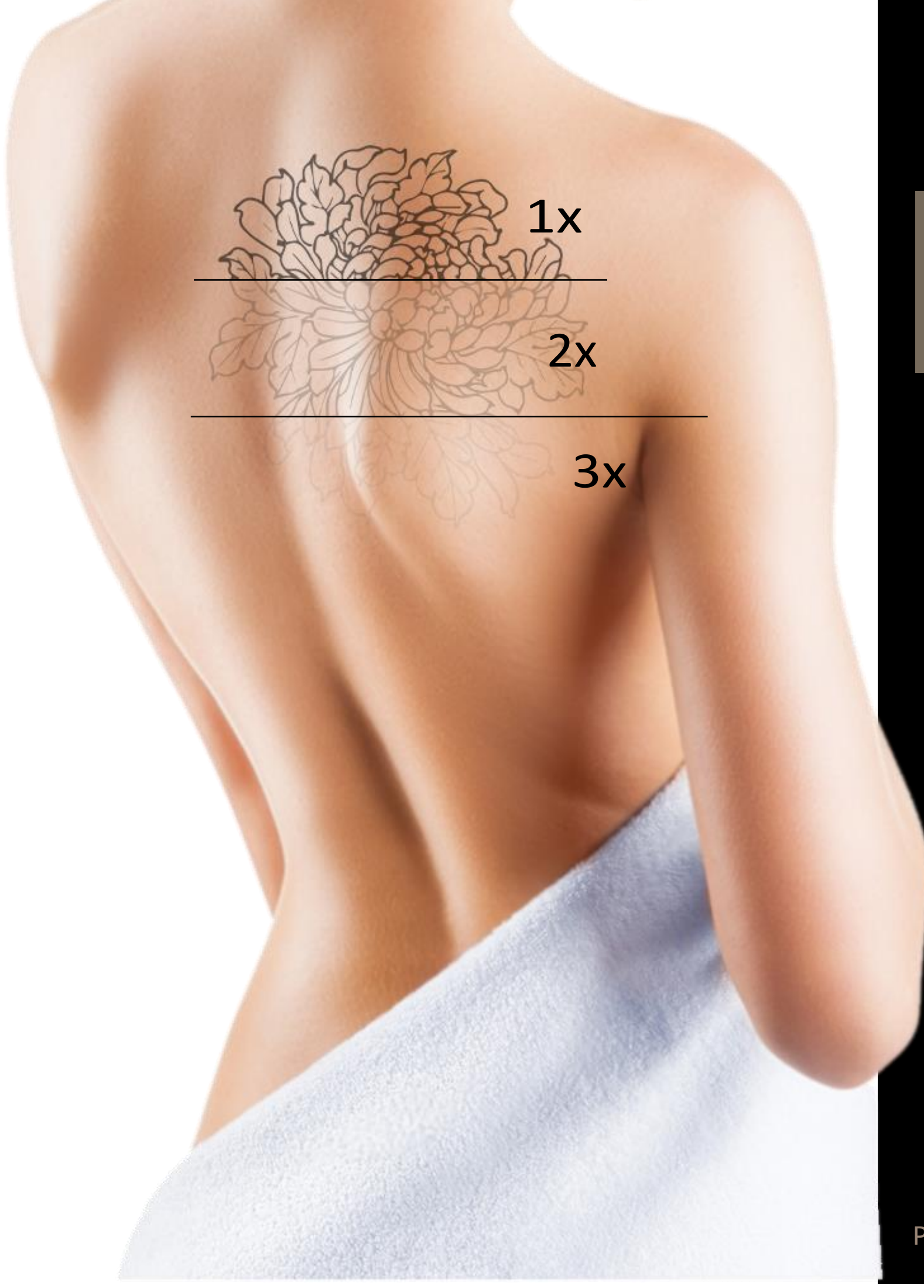
## ADVANCED PICO SECOND LASER

The most powerful pigment and tattoo removal solution on the market

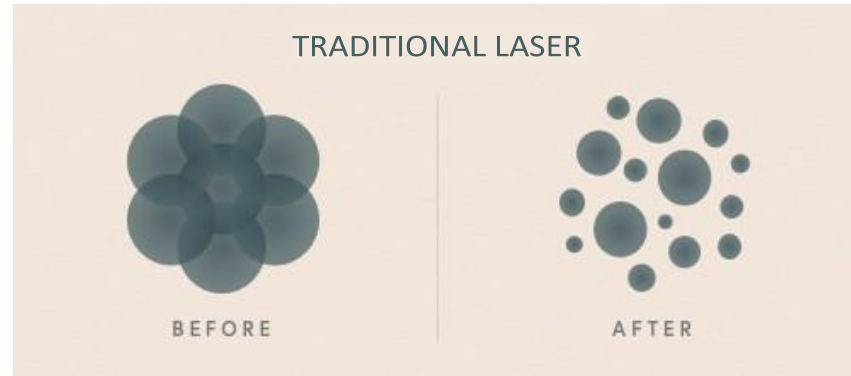


- ▶ HIGH PEAK POWER
- ▶ SHORTEST PULSE
- ▶ VARIOUS WAVELENGTHS
- ▶ VERSATILE TREATMENTS

Pigment removal / Tattoo removal / Skin rejuvenation /

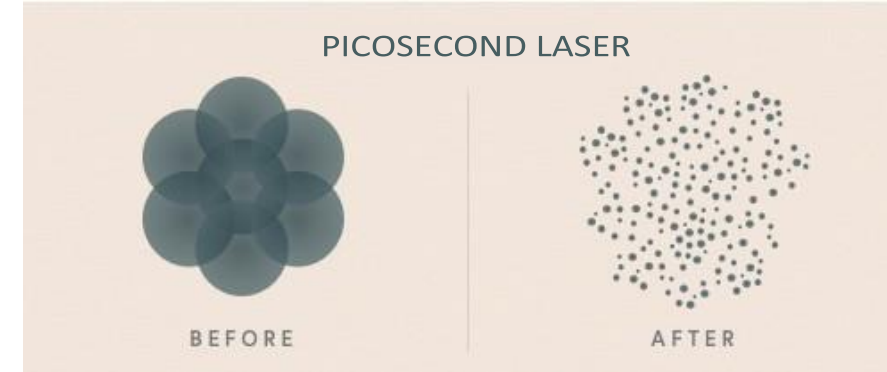


## Picosecond Laser VS Nanosecond Laser



### Minimized Risk & Minimized Discomfort

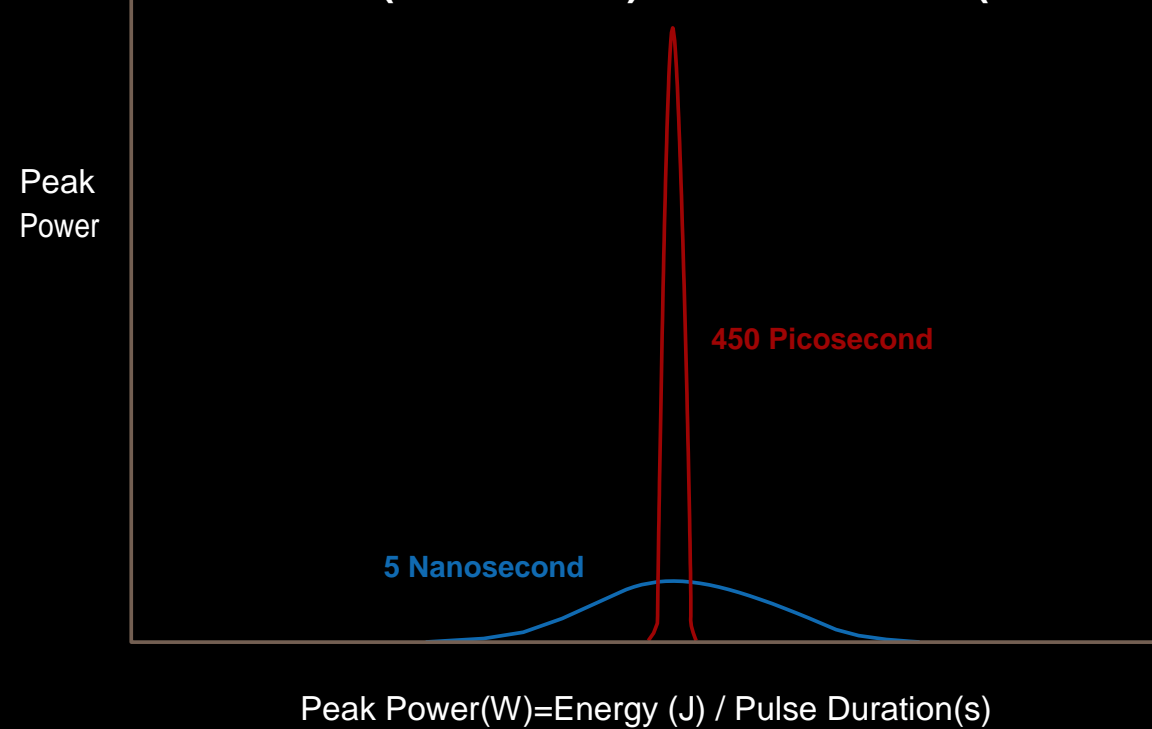
Minimized Risk and Minimal Discomfort: The ultra-short pulses also optimize the delivery of energy to the targeted ink particles ensuring the ink is effectively treated, while the least amount of heat gets transferred into the skin. Very minimal discomfort throughout the procedure.



### More Effective & Faster Result

Picosecond laser is 100 times faster than traditional nanosecond technology, as a result, the picosecond laser system breaks up tattoos faster than traditional laser. Picosecond lasers will shatter tiny ink particles making it easier for the body to clear the tattoo ink.

### Nanosecond( $10^{-9}$ second) vs. Picosecond( $10^{-12}$ second)



### Much Higher Peak Power

### High Peak Power Means Greater Efficacy

The high energy levels of Picopro allow pigment/tattoo removal with fewer treatments compared with other competing laser systems. The Picopro system has state of the art technology with a choice of four modalities for treating major skin problems and tattoos at an incredible rate of removal.



1064nm HP ( Standard )



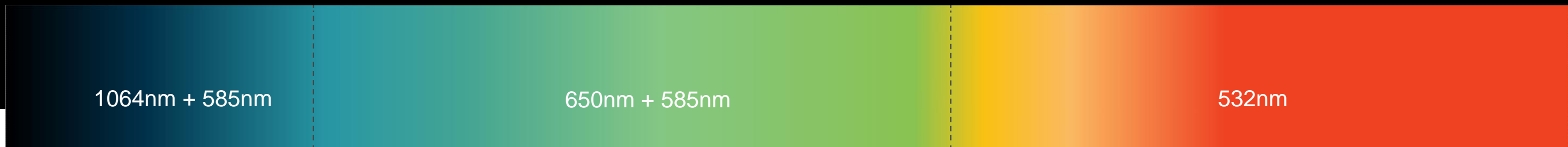
585nm Dye Laser HP (optional)



650nm Dye Laser HP (optional)



532nm HP ( Standard )



## Four Wavelengths

**With PICOFOCUS you can erase the rainbow.**

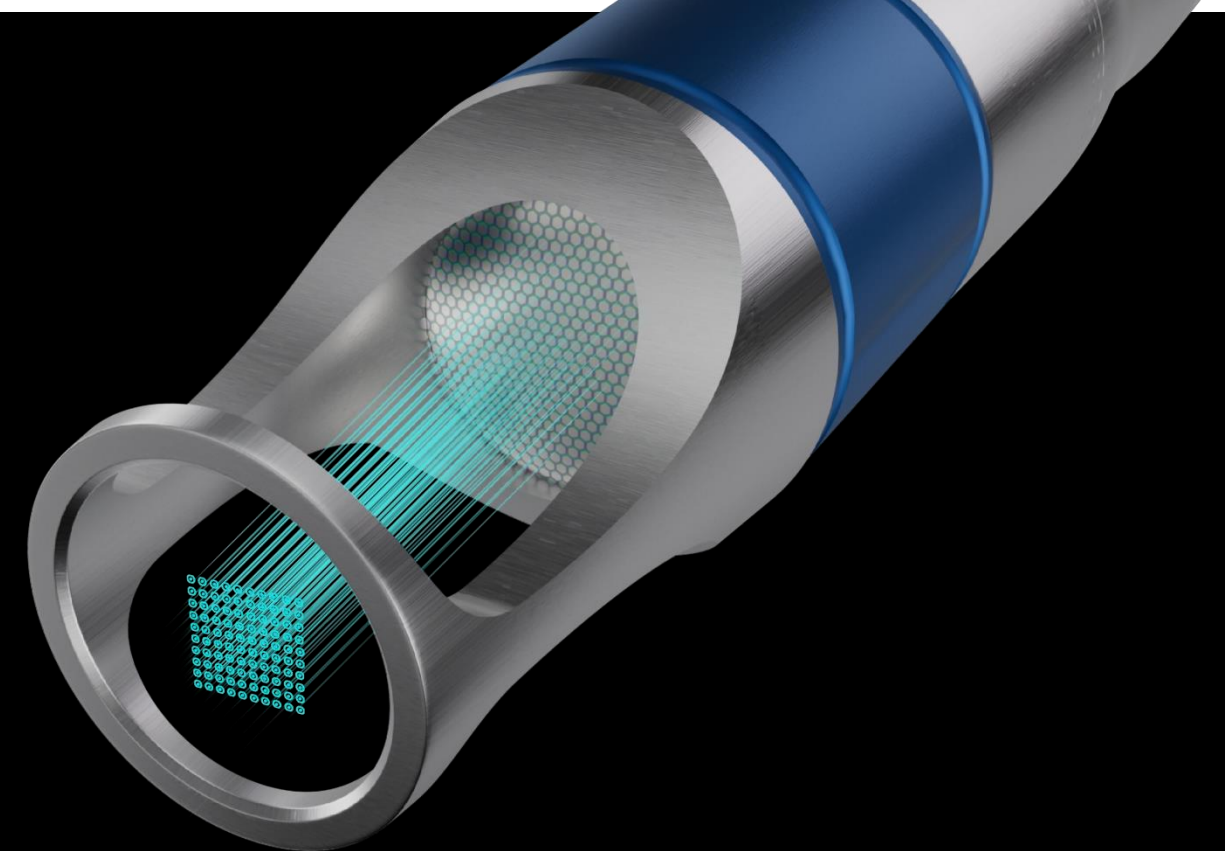
Picopro has new effective Picofocus for shattering the most popular pigment/ink. Picopro offers 5 wavelengths in order to treat the broadest range of tattoo inks.



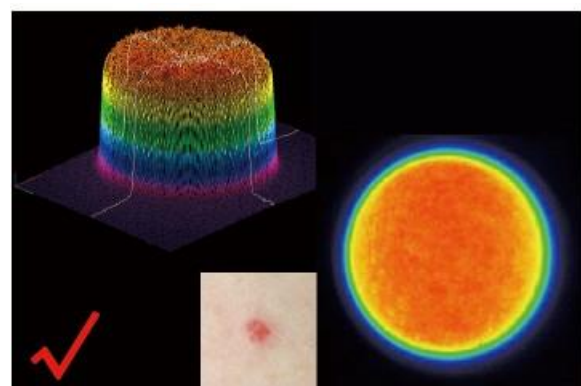


## Focus Array Lens

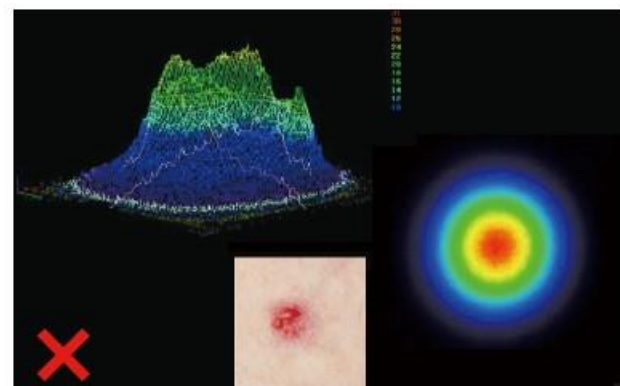
The Focus Array Lens is indicated for the treatment of acne scars, wrinkles and rejuvenates skin texture. The treatment stimulates the production of new collagen and elastin fibers, which results in reducing fine lines and pore size, increasing skin elasticity and improving skin condition.



Optional



Top hat beam



Gaussian beam

## Top Hat Beam Profile

A pulse with a flat-top profile distributes the high-energy radiation very evenly, which destroys the target structures without effecting the surrounding tissue with no significant injury to the epidermis.

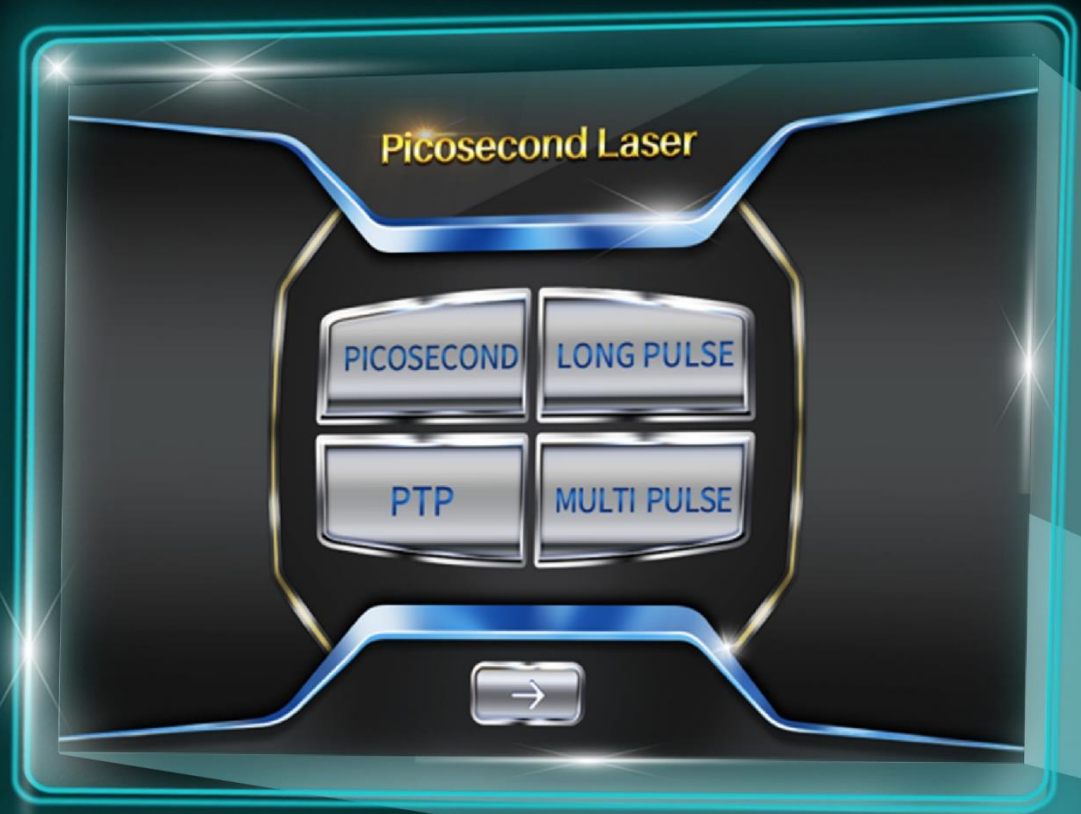


## South Korean Laser Arm

The lens in the laser arm has high reflection accuracy, low energy loss, & uniform light spot with stable output.







## Four-mode Operation Interface

The world's first unique four-mode operation interface, picosecond mode, long pulse mode, PTP mode, multi-pulse mode, meeting all the needs of various skin treatment problems

## User-Friendly Software System

The system comes with treatment parameter suggestions for 11 commonly used treatment items. Each treatment item is set with the recommended energy, frequency and spot size, which is convenient and fast for operator to use. No Errors!

**Automatic Mode**

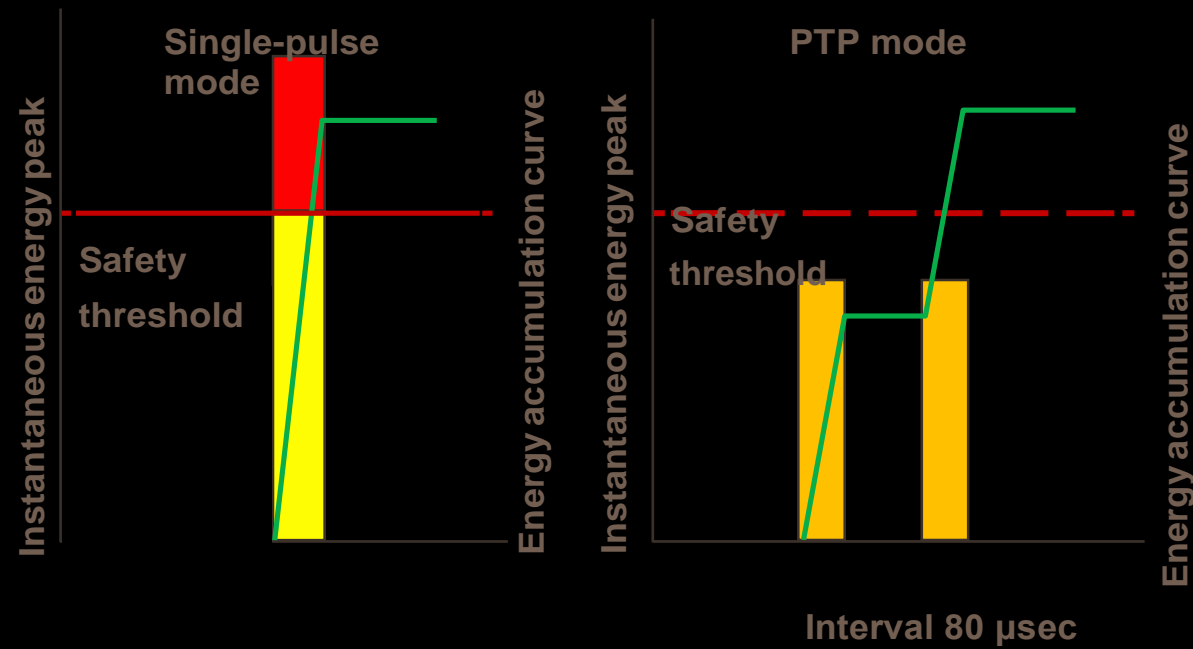
Scope	Energy	Frequency	Spot
Naevus	250 mJ	2~	2
Freckles	300 mJ	2~	3
Age spot	300 mJ	2~	3
Coffee spot	300 mJ	2~	4
Melasma	50 mJ	2~	5
Nevus of Ota	200 mJ	2~	4

**Automatic Mode**

Scope	Energy	Frequency	Spot
Tattoo Eyebrow	100 mJ	2~	5
Tattoo Eyeliner	100 mJ	2~	5
Tattoo Body	100 mJ	2~	5
Tattoo Red	50 mJ	2~	6
Carbon Peeling	200 mJ	2~	8



## PTP Mode(Photoacoustic Twin Pulse)



The PTP mode applies Pastelle delivering continuous high energy output in twin pulses separated by a very short pause. The PTP mode divides the pulse into two and has a lower risk of damaging surrounding tissues, is less painful and promotes faster collagen regeneration compared to previous Single Pulse methods. Moreover, it also has fewer side effects of hypopigmentation and PIH. Clinical studies have shown that PTP mode was less painful and caused a milder pigment response compared to the Single Pulse at the same energy level.

## Multi-pulse Mode



Based on the PTP mode, one pulse energy is divided into three short pulses and the three sub-pulses are continuously irradiated at short intervals. A much higher peak energy targets the melanosome with less side effects and pain.



## The Main Function of PTP & Multi-pulse Mode

For the treatment of deep intractable pigments, such as chloasma, birthmarks, nevus of Ota, etc.





## Long Pulse Mode

With a pulse width of 300 $\mu$ s, the laser stays in the dermal layer of the skin for a longer time, stimulates the growth of fibroblasts, promotes collagen regeneration, remodels and increases elasticity and improves skin texture.

## The Main Function of Long Pulse Mode

Brightening, firming, whitening, shrinking pores, removing fine wrinkles, and removing red blood vessels



## Specifications

Wavelength	1064nm/532nm Standard/ 585nm,650nm,755nm Optional
Energy	1500mj (1064nm) ; 800mj (532nm)
Peak Power	1064nm 1.33GW; 532nm 0.67GW
Frequency	1~10Hz
Zoom Spot Size	2-10mm Adjustable
Pulse Width	300 - 600ps
Beam Profile	Top Hat Beam
Light Guiding System	7 Jointed Arm
Aiming Beam	Diode 655 nm (Red)