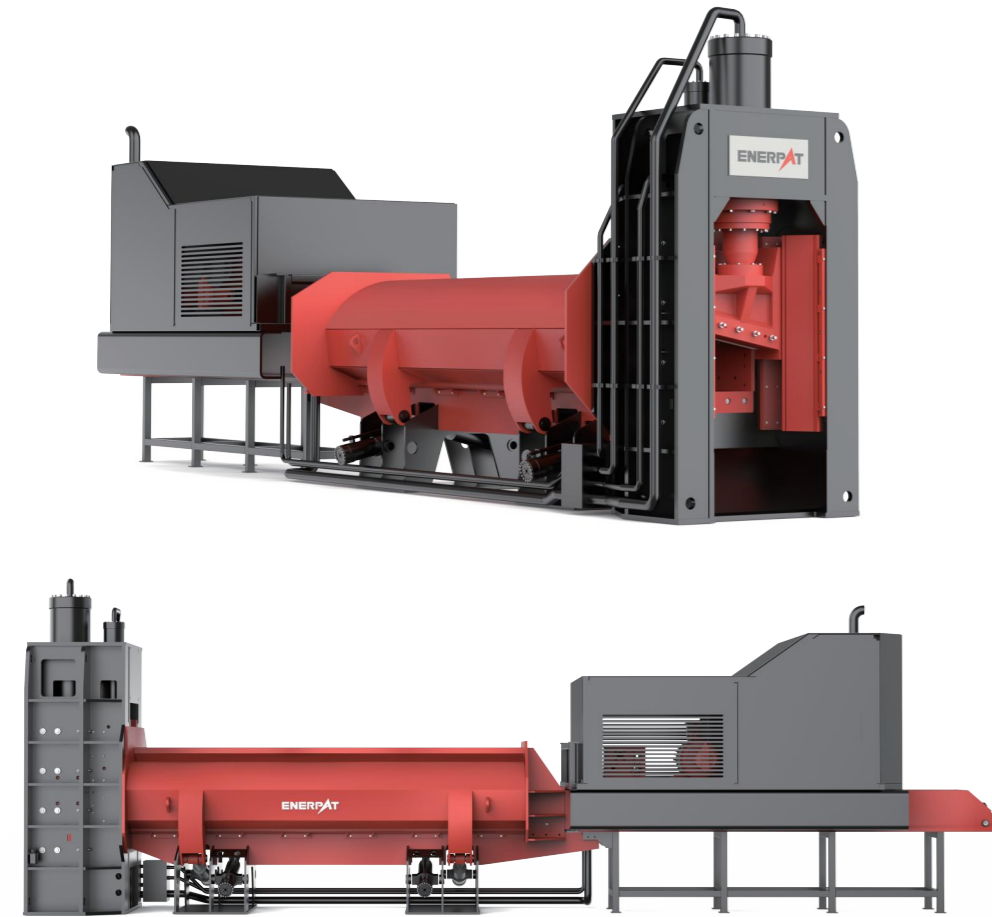


# PRODUCT DATA



MODEL	EMS-BS6360-9
Shear Force (t)	630
System Pressure (mpa)	32
Feed Opening Size (mm)	6000 × 2500
Shear Blade Length (mm)	900
Cutting Speed (min)	3-4 times
Total Power (kw)	2x90
Equipment Dimensions (mm)	14800 × 2500 × 5100
Equipment Weight (t)	85

# SERVICE SUPPORT

**Consulting**

With over 10,000 installations in 100 countries worldwide, Enerpat has the experience to provide expert advice and the most appropriate solutions.

**Customized Solutions**

Provide sample testing and reports. Full service solutions, including customized solutions, equipment delivery, spare parts and technical service.

**Commissioning**

Technical service engineers, project managers and sales engineers are available for commissioning, and operators are trained in maintenance and operation.

**After Sales Service**

Enerpat has three regional service centers in the UK, China and the USA to provide remote technical support to ensure a rapid response.

## ENERPAT Global Presence

**Headquarters UK**  
Branch: Australia, USA, China

**165**  
Products and services for many countries and regions

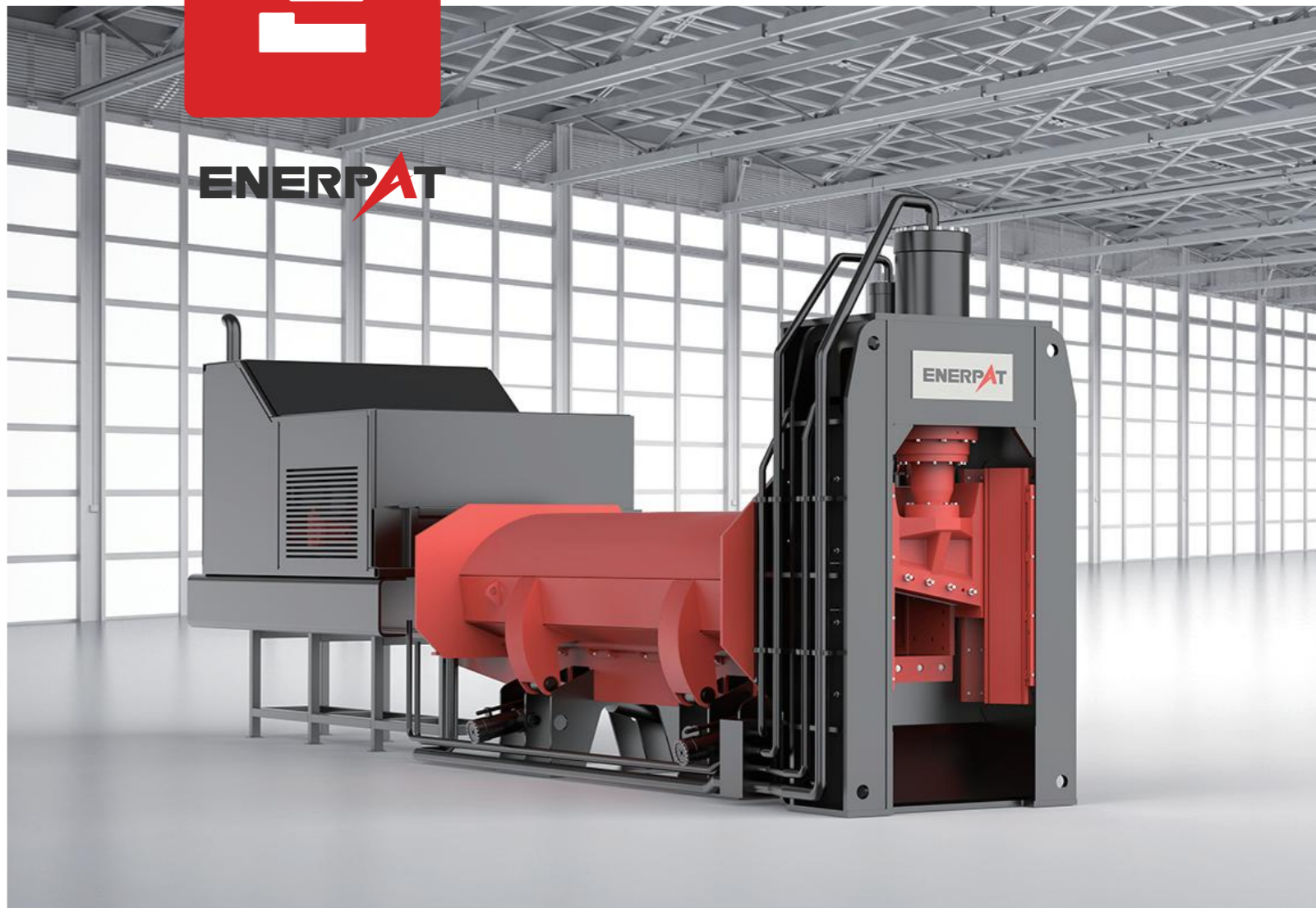
**650+**  
Technical specialists in hydraulics, electrics, mechanics, etc.

**500+**  
Marketing and service staff

**Global Production Sites**  
Three modern production sites in the UK, China and Germany

- 1936~Present
- 4 Global Companies
- 3 Modern Production Plants

## ENERPAT Global Selected Customer Performance Table



# Baling Shear Machine



ENERPAT AMERICA  
 Tel: +1(909)-996-3687  
 Tel: +1(909)-996-3563  
 Email: info@enerpatrecycling.com  
 Add: 3959 E Guasti Rd # C, Ontario, CA 91761, United States

British Brand  
Waste Expert

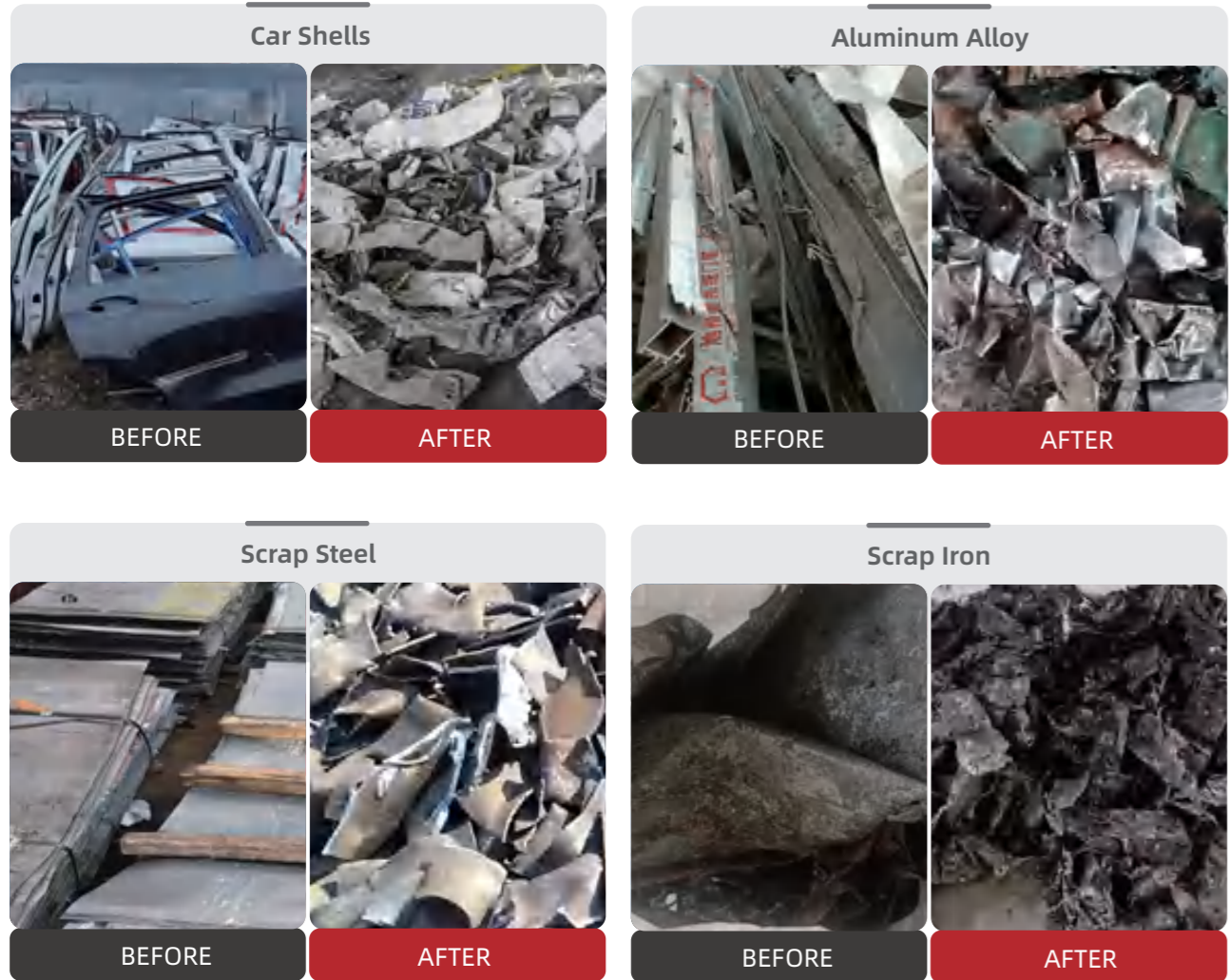


# PRODUCT APPLICATION

- High Efficiency
- Space Saving
- Increased Recycling Rates
- Operational Safety

ENERPAT EMS-BS series Baler Shear is an efficient metal processing machine that combines baling and cutting functions. It is primarily designed for handling scrap metals such as steel. Through steps like pre-compression, secondary compression, and cutting, it effectively compresses and packages scrap metal to meet various recycling and reuse requirements.

ENERPAT EMS-BS series Baler Shear is your ideal choice for processing scrap metals such as steel. It not only boosts production efficiency but also ensures operational safety while being eco-friendly and energy-efficient. This machine is widely used across various industries, including metal recycling, waste processing, and manufacturing.



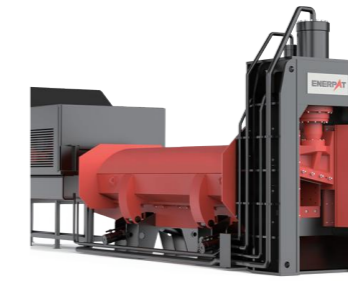
# EQUIPMENT STRUCTURE



- 1 Machine Body
- 2 Compression Chamber
- 3 Door Cover
- 4 Hydraulic Cylinder
- 5 Shearing Box
- 6 Blades
- 7 Hydraulic System
- 8 Electrical System



# MACHINE FEATURES



## Box Design 01

**Integrated Compact Design:** The machine features a compact, unified design.  
**High-Strength Manganese Steel Housing:** Welded manganese steel provides a sturdy and durable structure.  
**Smooth and High-Strength Operation:** Ensures stable operation with robust performance.  
**Easy Mobility and Installation:** Convenient to move and quick to install.



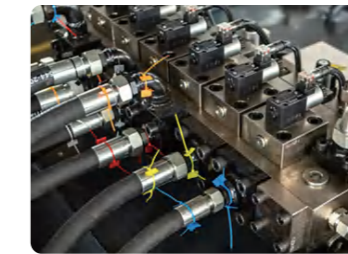
## Blade Structure 02

**High-Strength Wear-Resistant Blades:** Made of alloy steel, these blades offer exceptional abrasion resistance.  
**Symmetrical Reversible Design:** Each blade has four interchangeable edges, extending its lifespan.  
**Superior Strength and Toughness:** Blades feature high strength and excellent toughness. The blade angle can be adjusted for flexible applications.



## Hydraulic Cylinder Design 03

**Integrated Hydraulic Cylinder:** Molded as a single unit, providing high strength for high pressure operations.  
**Enhanced Compression Performance:** Increased compression force with exceptional performance. Uniform wall thickness ensures strong integrity and prevents oil leaks.  
**Premium Hydraulic Components:** Features components from reputable brands like Rexroth and Parker, ensuring long life and high efficiency.



## Hydraulic System 04

**Cartridge Valve Group:** High flow rate with significant speed enhancement.  
**H-Type Interface:** Tapered connection for leak prevention and stability.  
**Hallite Seals:** High-quality British seals, ensuring safety and durability.



## PLC Electrical System 05

**Siemens/Schneider PLC System:** Provides smart control with a one-touch activation.  
**One-Touch Operation Interface:** Simple and labor-saving with a touch screen and buttons.  
**Flexible Operating Modes:** Easily switch between manual and automatic operation.  
**Intelligent Programming Optimization:** Reduces idle strokes, enhancing work efficiency.