



DM
BREVKER
equipment

DNB

 **MOVAX**

**WE'RE
BREAKING
NEW GROUND**

MB
THE CRUSHING EVOLUTION

Remu

LOCALLY OWNED AND OPERATED

DM Breaker Equipment is your trusted supplier for quality new, used and reconditioned earthmoving attachments in Australia.

We know that in our industry, a strong reputation means repeat business. We are highly regarded in the market and our family operation has stood the test of time for over three decades. Providing exceptional and friendly customer support, we align ourselves with only the highest quality products and leading attachment manufacturers from around the world.

With an in-depth understanding of Australian industry requirements, we are the sole Australian distributor of the quality DNB attachments range and specialise in rockbreakers, grabs, shears, crushers and plate compactors for all types of machines. We also distribute MB crushing and screening buckets, Movax piling systems and Remu screening systems.

We know that for many of you, time is money. As we have dealers located all in all states and a main warehouse in Western Australia, you can be sure that we are always close at hand, whether you are in search of a product or require servicing. Furthermore, with dedicated workshops and field service teams on hand, any servicing or maintenance required on your equipment will be carried out with minimal interruption, meaning your machines are always operating at peak performance.

If you are looking to hire, you'll be pleased to know that we also have an extensive fleet of different sized rockbreakers and hydraulic equipment available and suitable for almost every make and model of excavator.

TRUSTED SUPPLIER FOR QUALITY EARTHMOVING ATTACHMENTS

PUTTING YOUR NEEDS FIRST

No matter the industry in which you work, we know that your needs are unique. Whether you run a small family business or are a large nationwide company, we make it our mission to understand your requirements and add value to your business.

By choosing to only work with the best attachment manufacturers in the world, we can provide you with a range of quality and innovative products that will meet your demands. We understand that the customer experience doesn't end when you walk out the door and our team will continue to look after you with regular servicing of your equipment to avoid any operational downtime.

Every sale, hire or repair we undertake is backed by many years of combined industry experience and dedication to providing good old-fashioned family service.

We are committed to:

- Supplying the highest quality equipment and maintenance services
- Understanding your needs to provide knowledgeable and practical technical advice
- Keeping costs down without compromising your requirements
- Carrying out full quality control checks and testing of equipment
- Attending to breakdown call outs promptly and efficiently
- Maintaining an honest, reliable and transparent approach across everything we do

QUALITY PRODUCTS, ADVICE & SERVICE

Our success is underpinned by the cornerstones of quality products, professional advice and superior service, and you are welcome to contact DM Breaker Equipment today to find out how we can help you with your machinery equipment and attachments needs.



QUALITY PRODUCTS

We source the highest quality products from around the world and carry out competent testing and commissioning for your peace of mind.



PROFESSIONAL ADVICE

Our extensive industry knowledge is backed by over three decades of experience, enabling us to maximise the efficiency of your equipment.



SUPERIOR SERVICE

As a family owned and operated business, our reputation counts for everything. Your success matters to us and you'll benefit from our honest and professional approach to everything we do.

/DNB ROCKBREAKERS

DNB Hydraulic Breakers have been one of the stalwart survivors in our tough and competitive market. With over 30 years of proven performance and reliability in the Australian market the DNB is your first choice.

Imagine the worst to produce the best. Our experience in breaking Blue Granite, scientifically proven to be one of the hardest rocks in the world, has created this philosophy. In order to break one of the hardest rocks in the world, a hammer had to be produced which was even stronger. That’s why DNB Rock Breakers are built with the hardest conditions in mind.

In all environmental conditions and in high production, DNB Breakers provide continuous breaking power, regardless of material. The best raw materials are used to build each part of the hammer because we know that replacing tools and repairing equipment is not only an inconvenience, it also means time away from work and profits.

Powerful impact energy and a variable impact rate, increase breaking frequency while decreasing time needed to get the job done.



SPECIFICATION	UNIT	D10IIs	D20IIs	D25IIs	D30IIs	D40IIs	D55IIs	D60IIs	D65IIs	D70IIs	D90IIs	D110IIs	D130IIs	D160IIs	D200IIs	D300IIs	D400IIs	D500IIs	
Operating Weight	Kg	76	100	200	300	520	855	1050	1360	1660	1860	2250	2600	3300	3800	6200	7500	12900	
Impact Rate	BPM	900-1200	900-1200	550-1100	500-1000	400-700	350-550	350-500	350-500	350-500	350-500	360-520	320-420	300-400	250-350	250-350	300-400	200-300	
Impact Energy	J	300	300	580	1000	1400	2000	2200	3700	4300	4300	5800	6920	9100	10500	12500		19500	
Operating Oil Flow	LPM	15-20	15-25	25-50	45-80	60-90	80-110	70-110	80-130	120-160	120-160	160-230	170-240	190-250	220-350	220-400	300-400	300-450	
Operating Pressure	bar	100-120	100-120	120-140	120-140	135-150	140-160	140 +/- 5	140 +/- 5	140 +/- 5	140 +/- 5	140 +/-5	145 +/-5	155 +/-5	155 +/-5	160 +/-5	140-160	160-180	
Carrier Weight	Ton	0.5-1.3	0.8-3.0	1.3-5.0	3.5-8	6.0-12	12-16	14-18	16-20	18-25	20-28	25-35	30-45	40-55	45-70	60-90	70-100	90-170	
Tool Diameter	mm	38	45	60	75	90	100	115	120	30	130	140	155	170	180	195	205	235	



/DNB GRAPPLE RANGES

The DNB brand includes a wide range of total solutions for mini excavators, built and designed with the vast Australian country in mind. Inclusive in this range is the Mini Grapple, specifically designed for the smaller machines. Attachable to excavators, wheel loaders and backhoes the Mini Grapple makes the perfect accessory to any collection of plant. The best raw materials including HARDOX are used to manufacture the Mini Grapple for reliability.

The DNB Mini Grapples are the perfect accessory for smaller machines. Excellent for logs, stones, pipework or scrap metal. Built with high strength and wear resistant materials (HARDOX,) the DNB Mini Grapple are lightweight and highly durable. They feature a fixed mount and slim design with long fingers in order to access those tight areas and a 4 bar linkage system for fast motion and wide opening.

SPECIFICATION	UNIT	TF010	TF015	TF030	TF050	TF060
Weight	kg	50	115	180	300	730
Total Length A	mm	750	950	1100	1195	1773
Jaw Opening B	mm	865	1080	1250	1360	1890
Upper Arm Width C ¹	mm	124	170	202	230	324
Lower Arm Width C ²	mm	238	300	370	390	560
Pressure (cylinder)	bar	210	210	210	210	150-240
Oil Flow (cylinder)	lpm	15~35	20~45	30~75	40~80	40~80
Rotating	–	Fixed	Fixed	Fixed	Fixed	Fixed
Excavator	ton	0.7~2.0	1.5~3.0	2.5~5.0	4.5~8.0	12~18

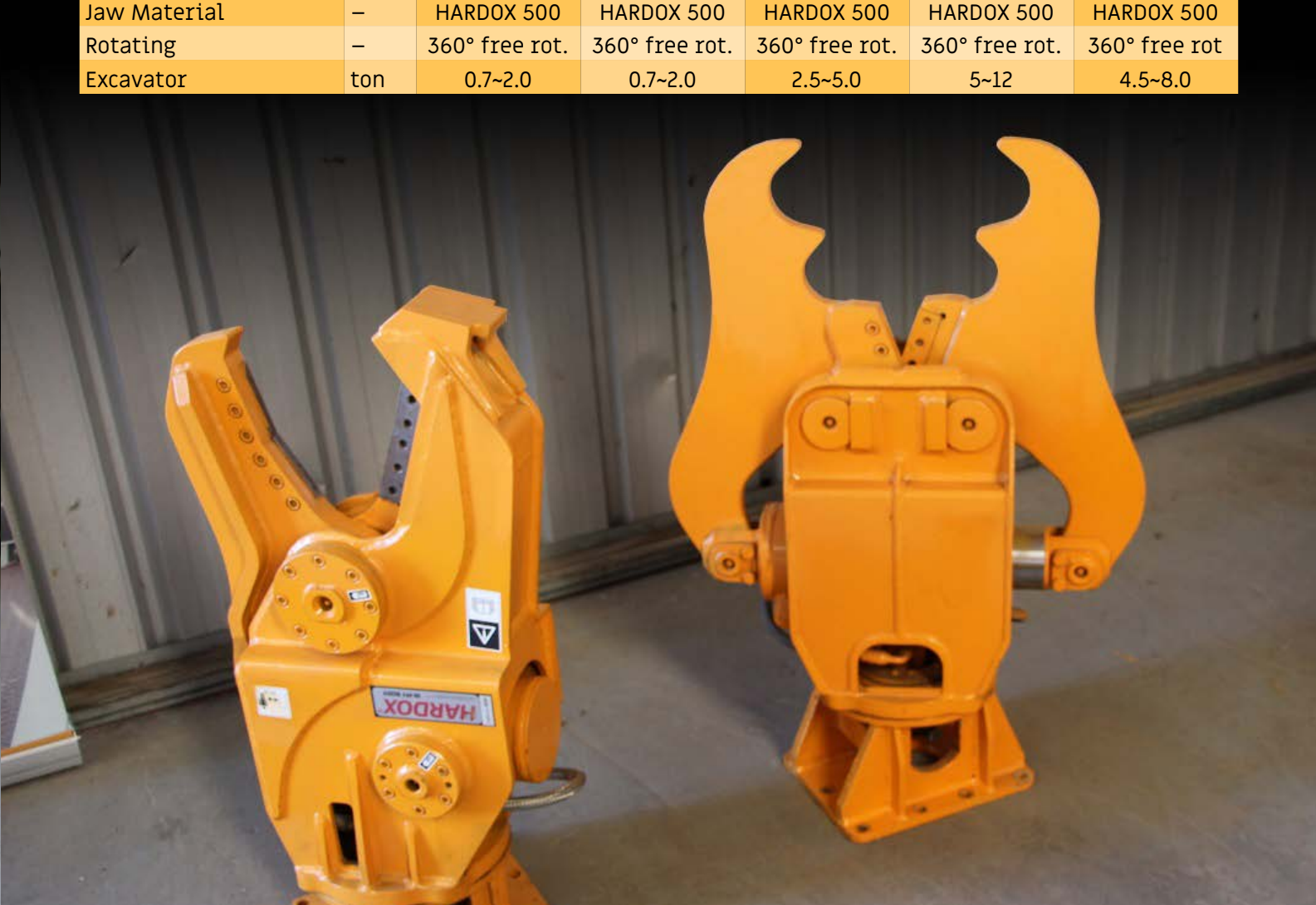


/DNB MINI CRUSHER

The DNB Mini Crushers are designed for small hydraulic machines. Mini Crushers are available with mechanical (free) 360-degree rotator or 360° Hydraulic rotator. Suitable for crushing concrete slabs scrap and demolition materials.

Lightweight design to enable stability of the operating machine. Manufactured from high strength and wear resistance materials the DNB Mini Crushers utilise a powerful crushing system.

SPECIFICATION	UNIT	CR010	CR020	CR030	CR050	CR050H
Weighth	kg	105	180	360	400	480
Total Length	mm	820	973	1230	1425	1362
Total Width	mm	568	688	767	930	850
Total Height	mm	260	290	350	400	465
Jaw Opening	mm	280	360	430	530	520
Max. System Pressure	bar	280	280	80	210	300
Oil Flow (cylinder)	lpm	15 – 35	20 – 45	30 – 75	40 – 80	50 – 90
Oil Flow (s/motor)	lpm	–	–	–	–	10 – 15
Force at Throat	ton	51	59	80	90	99
Force at Mid	ton	29	59	37	48	48
Force at Front	ton	18	20	26	32	32
Cutter Length	mm	75	100	100	–	100
Jaw Material	–	HARDOX 500	HARDOX 500	HARDOX 500	HARDOX 500	HARDOX 500
Rotating	–	360° free rot.	360° free rot.	360° free rot.	360° free rot.	360° free rot.
Excavator	ton	0.7~2.0	0.7~2.0	2.5~5.0	5~12	4.5~8.0



/DNB MINI SHEAR RANGES

The DNB Mini Shears are specifically designed for the smaller excavator for use in demolition and recycling industries. Suitable for scrap and demolition applications, cutting heavy wire, strapping, pipe and more.

Lightweight design with a trunnion mounting cylinder the DNB Mini Shears is manufactured from high strength and wear resistant materials for reliability.

SPECIFICATION	UNIT	SH020	SH030	SH040	SH050	SH050H
Weight	kg	190	260	400	430	430
Total Length	mm	950	127	1241	1410	1356
Total Width	mm	478	563	710	665	720
Total Height	mm	290	350	404	400	65
Jaw Opening	mm	205	230	270	290	290
Max. System Pressure	bar	280	280	280	210	300
Oil Flow (cylinder)	lpm	20~45	30~75	30~90	40~80	50~90
Force at Throat	ton	–	–	165	152	–
Force at Mid	ton	61	108	72	60	167
Force at Front	ton	30	43	55	33	69
Cutter length	mm	100	125	125	–	150
Jaw Material	-	HARDOX 500	HARDOX 500	HARDOX 500	HARDOX 500	HARDOX 500
Rotating	–	360° free rot.	360° free rot.	360° free rot.	360° free rot.	Hydraulic
Excavator	ton	1.5~3.0	2.5~5.0	3.5~8.0	5~12	4.5~8.0

FOR USE IN
DEMOLITION
AND RECYCLING
INDUSTRIES



/DNB MULTIPROCESSOR RANGES

The DNB Multiprocessors are a combination of 3 options available for one working unit. Maximising power, strength and capabilities the Multiprocessor gives the operator a wide range of abilities not offered by other individual units. Built and designed with the vast Australian country in mind these processing units are the climax of strength, power and speed.

The DNB Multiprocessor features 3 options for versatility, including Crushing, Pulverising and Shearing. High strength and wear resistant materials including HARDOX are incorporated into the body. Optional speed up valve for faster operations and a powerful 2 cylinder system that systematically provides a functional and competitive working product.

SPECIFICATION	UNIT	DMP140	DMP200	DMP220
Weight	kg	1250	1685	1985
Max Opening Width (A)	mm	770	952	1067
Total Width (B)	mm	1100	1292	1410
Total Length (C)	mm	1570	945	1970
Total Height (D)	mm	580	692	692
Body Width (E)	450	320	376	450
Crushing Force (F)	kN	451	588	647
Crushing Force (G)	kN	755	892	1079
Cutting Force (H)	kN	1373	1971	2422
Cutter Length (K)	mm	170	170	170
Max. System Pressure	bar	35	38	38
Swing Motor Setting Pressure	bar	21	21	21
Rec. Oil Flow (cylinder)	lpm	80 – 180	110 – 250	150 – 250
Rec. Oil Flow (S/Motor)	lpm	26 – 40	36 – 40	36 – 40
Speed-up Valve	–	Standard	Standard	Standard
Rotating	–	Hydrauli	Hydraulic	Hydraulic
Carrier Weight	ton	12 – 18	16 -24	20 – 28
Optional Jaw Types	–	P,M,C,S	P,M,C,S	P,M,C,S



/DNB PLATE COMPACTOR

SPECIFICATION	UNIT	CP140	CP50	CP140	CP200	CP300
Operating Weight	kg	644	350	644	1060	1150
Length	mm	1160	900	1160	1350	1350
Width	mm	700	550	700	900	900
Height	mm	676	540	676	730	730
Oil Flow Requirement	l/min	80 – 110	45 – 65	80 – 110	120 – 170	150 – 200
Operating Pressure	bar	150 – 210	100 – 160	150 – 210	170 – 220	170 – 220
Impulse Force	ton	7.5	4	7.5	15	15
Frequency	rpm	1800	1800	1800	2000	2000
Carrier Weight	ton	8 – 16	4 – 7	8 – 16	16 – 25	28 – 33
CBM	–	1.0	1.00	1.0	1.25	1.25

*Specifications of DM Breaker Equipment hydraulic tools are subject to change without notice because of improvement.

* Without hydraulic operation piping line.

Included in the range of DNB Attachments are the DNB-CP plate Compactors. Designed for a wide range of carrier weights the Plate Compactor eliminates the safety hazard of trenching by utilizing the arm of the excavator for safe down the hole reach. Easy, simple connection and operation to excavators and backhoes for trenching, backfilling, house pads and more.

Features rubber mounting system for minimal vibration through the arm of the machine. No downward pressure required for compaction, only the weight of the unit required. Priority Flow Valve in order to protect the hydraulic pump from any excessive oil flow (back pressure). Improved durability with it's improved high intensity and tension materials including HARDOX in its body.



/DNB SORTING GRAB

SPECIFICATION	UNIT	DSG200	DSG250	DSG300	DSG400	DSG1500
Weight	kg	220	250	410	650	1370
A	mm	1105	1105	1300	1500	1886
B	mm	400	450	550	700	900
H	mm	415	415	460	531	776
H1	mm	350	350	451	510	567
D	mm	652	652	707	774	863
Rotating	-	360° hydraulic	360° hydraulic	360° hydraulic	360° hydraulic	360° hydraulic
Recommended Carrier Weight	ton					12~18

SPECIFICATION	UNIT	DSG2000	DSG500	DSG3000	DSG4000	DSG5000
Weight	kg	1700	800	1700	2000	2200
A	mm	1923	1700	2082	2120	2250
B	mm	1030	880	1080	1160	1250
H	mm	905	665	956	1006	1100
H1	mm	744	532	770	794	830
D	mm	883	818	982	1060	1170
Rotating	-	360° hydraulic	360° hydraulic	360° hydraulic	360° hydraulic	360° hydraulic
Recommended Carrier Weight	ton	18~15	11~15	28~35	36~42	43~47

Designed for selecting and handling a variety of construction materials the Sorting grab is ideal for tearing down buildings for maximum productivity & efficiency. Perfect for sorting mixed materials, concrete blocks & rocks, the DNB Grab should be the choice when only the toughest grab is required.

The DNB Sorting Grab is designed for works of carrying, loading and unloading heavy objects of rocks and lumber. The unit has a 360° hydraulic rotation and has the advantage of unloading goods in high places due to its overall height is short. The DNB Sorting Grab has improved durability with it's improved high intensity and tension materials.



/MB CRUSHER BUCKET RANGES

MB Crushing Technology has revolutionised the concept of Crushing and Screening systems. With more than 60 years of experience in the excavation, road work, quarry, and demolition sectors, MB Crushing are at the forefront of research and technology. Designed and manufactured in Italy, only the best materials are used for excellent quality. Solid, durable, designed to resist wear and high stresses in the toughest working conditions which makes them the perfect accessory for the harsh Australian environment.

The MB Hydraulic Crusher Bucket range covers machines from 8 ton through to 100 ton. These units are efficient and versatile and you can further increase productivity by adding the iron separator and the dust suppressor. These crusher buckets can be easily transported to and from sites attached to the machine. These buckets allow the material to be re-used on site. The BF90.4, for instance, can crush 42 m3/h.

SPECIFICATION	UNIT	C50	BF60.1 S4	BF70.2 S4	BF80.3 S4	BF90.3 S4	BF120.4	BF135.8 S4	BF150.10 S4
Carrier Weight	Ton	8-12	14-18	120-25	25-30	30-35	35-50	50-75	≥ 75
Load Capacity	m³	0.15	.55	.66	.70	.90	1.30	1.60	2.30
Opening Dimensions	mm	L540 H250	L 610 H 510	L 740 H 510	L 850 H 510	L 910 H 540	L 1205 H 540	L 1300 H 600	L 1450 H 700
Output Setting	mm	15-60	15-60	15-130	15-135	15-140	15 – 145	40-150	100-200
Length (A)	mm	1240	1745	2000	2050	2185	2185	2930	3560
Width (B)	mm	1000	1000	1150	1300	1340	1620	1880	2090
Height (C)	mm	770	1100	1200	1400	1390	1390	170	2065
Weight	Ton	.75	1.6	2.3	3	3.5a	4.8	7.5	10.5
Oil Flow	l/min	90	98	140	160	180	210	320	380
Pressure	bar	200	220	220	220	220	220	250	230
Counter	bar	10	10	10	10	10	10	10	10
Max. Production	m³/h	10	23	31	34	42	53	88	120

AT THE
FOREFRONT OF
RESEARCH AND
TECHNOLOGY



/MB CRUSHER BUCKET – WHEEL LOADER RANGES

SPECIFICATION	UNIT	L120	L140	L160	L200
Carrier Weight – Skid	Ton	≥3	≥4	≥6	≥6
Carrier Weight – Backhoe/Loader	Ton	6-8	8-12	10-12	10-14
Load Capacity	m³	0.20	.25	.35	.45
Opening Dimensions	mm	730 H250	L740 H250	L1100 H240	L1435 H260
Output Setting	mm	15-60	15-60	5-6	15-60
Length (A)	mm	1230	1230	1300	1432
Width (B)	mm	1230	1530	1630	2030
Height (C)	mm	800	800	835	835
Weight	.95	.95	.98	1.45	1.50
Oil Flow	l/min	95	98	110	120
Pressure	bar	200	200	200	200
Counter Pressure	bar	0	20	20	20
Max. Production	m³/h	14	20	20	22

MB Screening Buckets have the ability to be installed on all excavators. A hydraulic intermittent system allows it to be used with wet and dry materials. It has the advantage of onsite screening of various materials & are used for both before and after the crushing stage giving the owner the ability to manage materials best suited for the job. Can reduce crushing times up to 60%.

The MB L series Screening buckets are designed to be used with excavator and loaders. Screening of a selection of materials ie waste/demolition/stones/debris on beaches. Can be used for recycling / residential and commercial building sites and demolition. Multiple basket sizes.

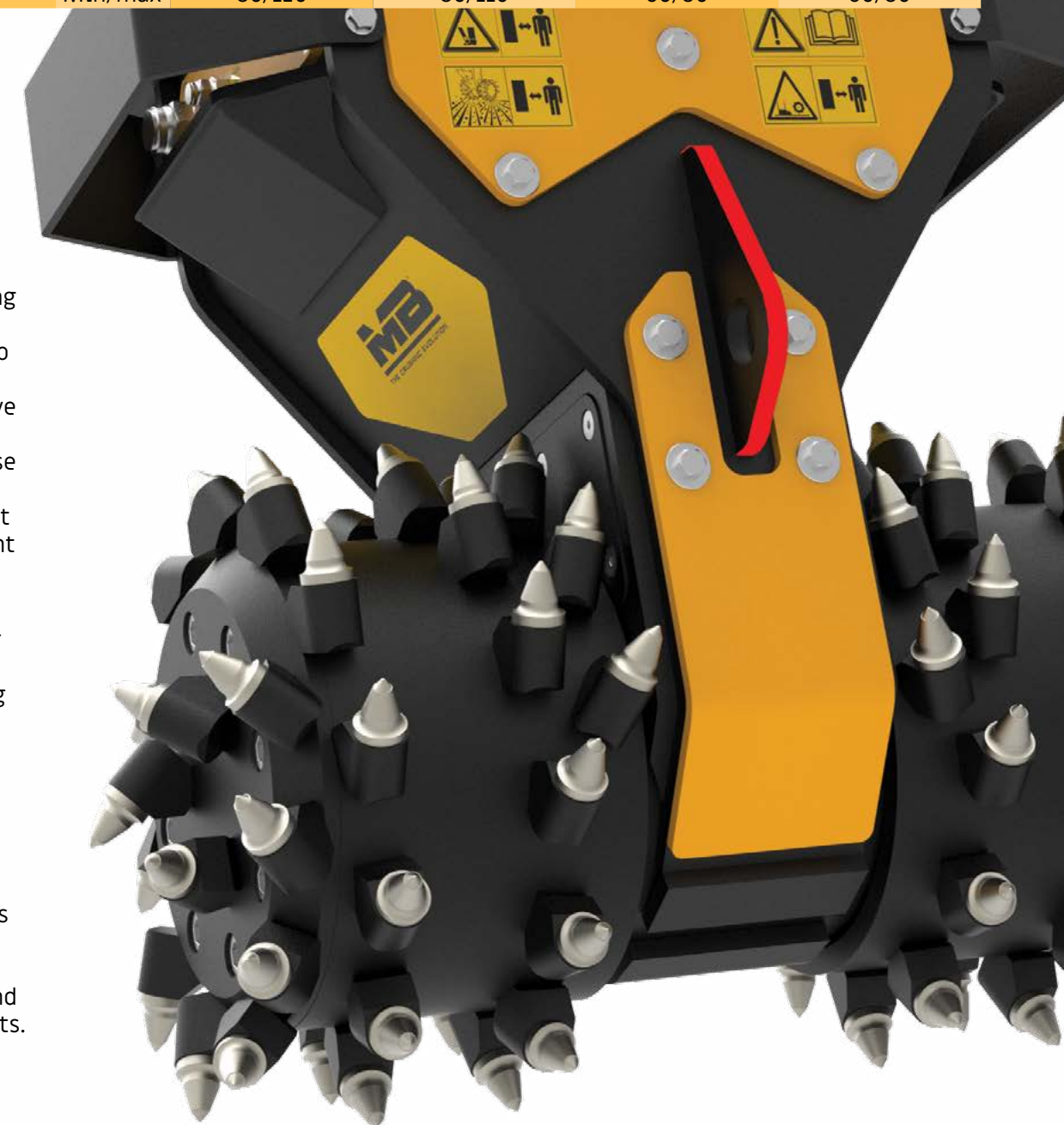


/MB DRUM CUTTER RANGES

SPECIFICATION	UNIT	R500	R700	R800	R900
Carrier Weight	Ton	3.5-8	8-14	16-25	18-30
Output Torque	Nm	5000	5000	10000	13200
Pick Force	N	19600	19600	33900	40000
Length (A)	mm	500	500	600	680
Width (B)	mm	500	895	1015	1130
Height (C)	mm	820	930	1120	1375
Weight	0.3	0.3	0.6	1	1.4
Recc. Oil Flow	l/min	60-120	110-18	200-300	250-350
Inlet Max. Pressure	bar	350	350	350	350
Drain-Out Max Pressure	bar	4	4	4	4
Speed/Min	Min/max	80/120	80/110	60/80	60/80

Designed and built in Italy by world leading engineers the MB Drum Cutter is suitable for concrete walls, scaling, trenching, rock excavation, demolition, dredging and for any use in urban areas and also on restricted job sites. This innovative design provides powerful and precise control with low vibrations making it the ideal attachment for a variety of applications.

The MB Drum cutter is excellent choice for surface profiling rock and concrete walls, trenching, stump grinding, tunnelling and soft rock excavation. With low vibration and reliability the MB Drum Cutter it is ideal for noise and vibration sensitive projects in urban and underground projects.



/MB SCREENING BUCKET RANGES

MB Screening Buckets have the ability to be installed on all excavators. A hydraulic intermittent system allows it to be used with wet and dry materials. It has the advantage of onsite screening of various materials & are used for both before and after the crushing stage giving the owner the ability to manage materials best suited for the job. Can reduce crushing times up to 60%.

The unique and innovative conical shape of the drum is designed to increase production. MB screening buckets are equipped with interchangeable panels of various size holes to obtain different output material. Designed with a conveyor system to eliminate friction during material loading, while the flat base makes transport easy.

SPECIFICATION	UNIT	S10 S4	S14 S4	S18	S23
Carrier Weight	Ton	5-10	14-24	25-40	40-70
Load Capacity	m³	0.32	1.10	2.40	4.30
Grid Diameter	mm	880	1200	1600	2020
Length (A)	mm	1280	1700	2260	2840
Width (B)	mm	940	1400	1840	2320
Height (C)	mm	965	1440	1870	2350
Basket Depth (D)	mm	560	890	1220	1490
Weight	0.39	0.39	1.10	2	3.75
Oil Flow	l/min	40	60	120	160
Pressure	bar	130	150	200	320
Case Drain Required	–	No	No	Yes	Yes
Speed/Min	Min/max	25/30	15/25	15/25	15/25

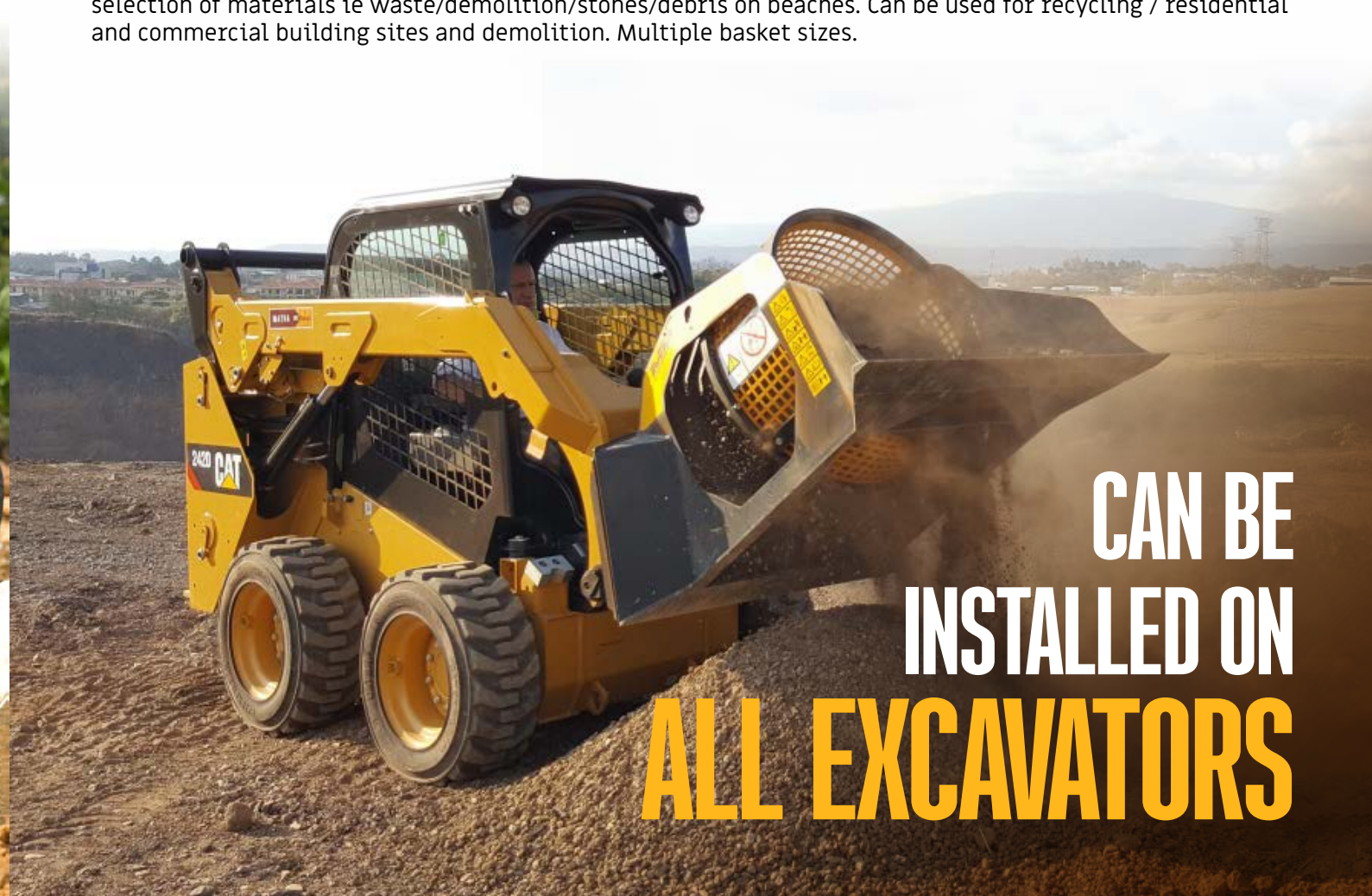


/MB SCREENING BUCKET – WHEEL LOADER RANGES

SPECIFICATION	UNIT	LS140	LS170	LS220
Carrier Weight – Skid	Ton	3-5	–	12-25
Carrier Weight – Backhoe/Loader	Ton	5-10	8-14	2.40
Load Capacity	m³	0.40	1.10	1600
Grid Diameter	mm	750	1200	2355
Length(A)	mm	1380	1670	2180
Width(B)	mm	1420	1865	1790
Height(C)	mm	875	1380	1220
Basket Depth(D)	mm	560	890	2.80
Weight	Ton	0.45	1.35	120
Oil Flow	l/min	40	60	220
Pressure	bar	130	150	No
Case Drain Required		No	No	15/25
Speed/Min	Min/max	25/30	15/25	

MB Screening Buckets have the ability to be installed on all excavators. A hydraulic intermittent system allows it to be used with wet and dry materials. It has the advantage of onsite screening of various materials & are used for both before and after the crushing stage giving the owner the ability to manage materials best suited for the job. Can reduce crushing times up to 60%.

The MB L series Screening buckets are designed to be used with excavator and loaders. Screening of a selection of materials ie waste/demolition/stones/debris on beaches. Can be used for recycling / residential and commercial building sites and demolition. Multiple basket sizes.



CAN BE
INSTALLED ON
ALL EXCAVATORS

The Remu Big Float is a unique amphibious excavator for the most challenging environments, such as industrial waste ponds, swamps, canals and shorelines. The retractable pontoon undercarriage enables the Big Float to be easily transported along public roads. Ideal for pipeline and cable works along the shoreline. The Big Float comes in various sizes and can dredge down to 9 metres.

Suitable for various applications; Cutting aquatic vegetation, clearing canals and rivers, emptying industrial waste ponds, dredging shorelines, building infrastructure. Easy to transport. Anchoring legs secure the Big Float to the bottom so the machine doesn't move while working where current occurs. Propellers can be attached to drive in open waters.

SPECIFICATION	E10		E15		E22	
	METRIC	IMPERIAL	METRIC	IMPERIAL	METRIC	IMPERIAL
Weight	17 000 kg	37 500 lb	24 000 kg	53 000 lb	36 000 kg	79 500 lb
A min. Transport width	3 m	9 ft 10 in	3 m	9 ft 10 in	3.5 m	11 ft 6 in
A max. Working width	4.6 m	15 ft	4.8 m ¹	16 ft	5.5 m ¹	18 ft
B transport height ¹	3.5 m	11 ft 6 in	3.7 m	12 ft	3.9 m	13 ft
C overall transport length ¹	10.2 m	33 ft 6 in	3.7 m	45 ft	16 m	53 ft
D undercarriage height with adaptor ring	1.5 m	4 ft 11 in	1.7 m	5 ft 7 in	1.9 m	6 ft 3 in
Maximum working width with additional pontoons	6.9 m	22 ft 7 in	7.8 m	25 ft 7 in	8.2 m	27 ft
G pontoon width	1.3 m	4 ft 3 in	1.3 m	4 ft 3 in	1.5 m	5 ft
E track shoe width	0.4 m	1 ft 4 in	0.4 m	1 ft 4 in	0.4 m	1 ft 4 in
F track shoe width	0.9 m	3 ft	0.9 m	3 ft	0.9 m	3 ft
H minimum track width	1.7 m	5 ft 6 in	2 m	6 ft 7 in	2 m	6 ft 7 in
Q transport length (pontoons)	8.2 m	26 ft 11 in	11.2 m	36 ft 9 in	11.4 m	37 ft 5 in
R length of tracks on ground	4.3 m	14 ft	6 m	20 ft	6.4 m	21 ft
S transport height (pontoons)	1.4 m	4 ft 7 in	1.5 m	4 ft 11 in	1.7 m	5 ft 7 in
I catwalk width ¹	3 m	9 ft 10 in	3 m	9 ft 10 in	3.3 m	11 ft
K counterweight swing radius ¹	3.2 m	11 ft	3.2 m	11 ft	3.8 m	12 ft 6 in
L outreach (in front) ¹	9 m	11 ft	13 m	45 ft	15.5 m	50 ft
M digging depth ¹	4 m	13 ft	7.5 m	24 ft 7 in	9 m	30 ft
N max cutting height ¹	11 m	36 ft	11 m	36 ft	13 m	43 ft
Maximum working depth without additional pontoons ¹	1.2 m	3 ft 11 in	1.5 m	4 ft 11 in	1.5 m	4 ft 11 in

¹ can vary depending on the base machine.

All weights and sizes (metric and imperial) are approximate. Specifications subject to modifications at manufacturer's discretion. Always revise the local limitations for road transportation. Some measurements depend on the chosen make and model of the base machine.



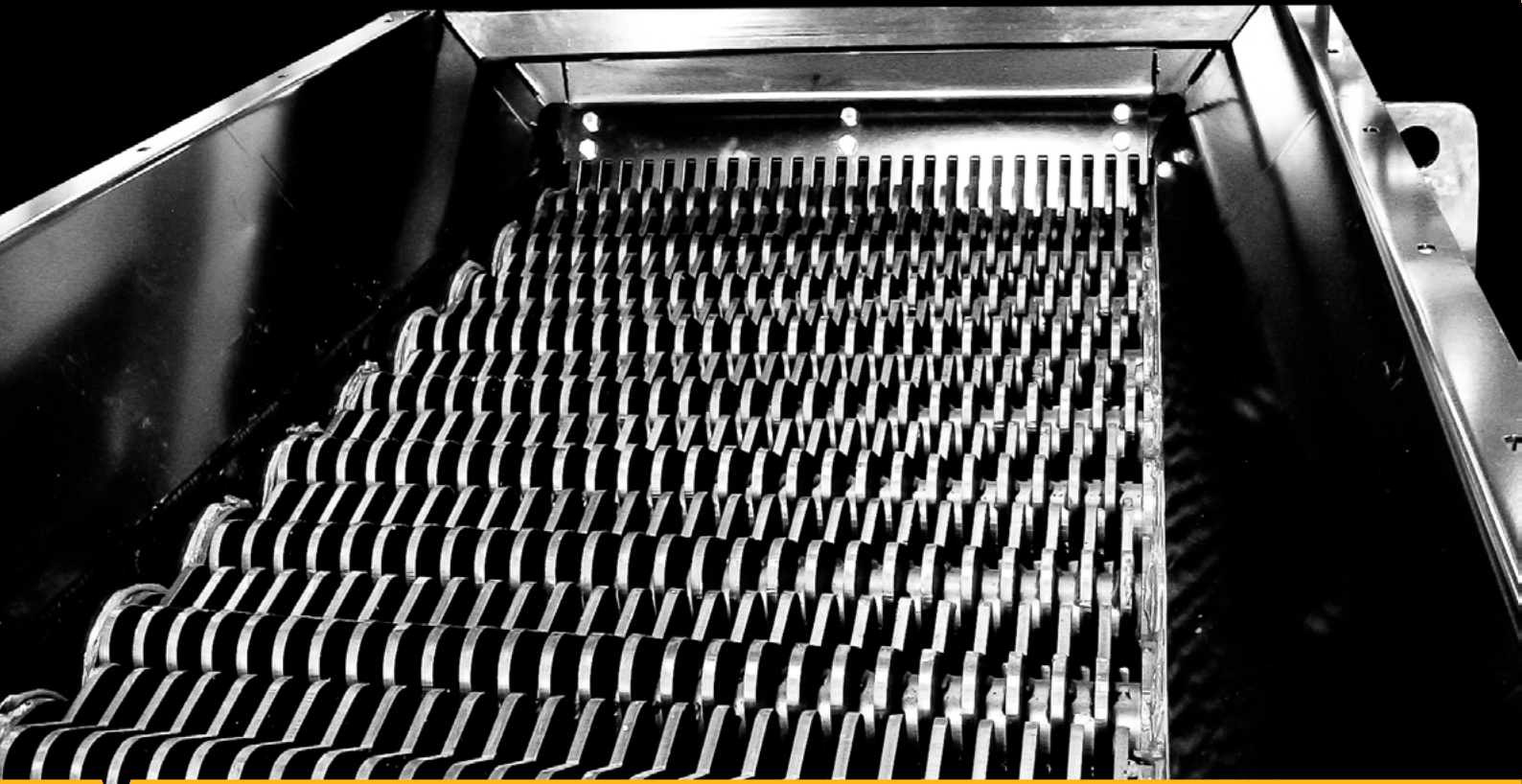
FOR THE MOST
CHALLENGING
ENVIRONMENTS

/ REMU COMBI E8 SCREENING STATION RANGES

SPECIFICATION	METRIC	IMPERIAL
Length Of Screening Element	2500 mm	8 ft 2 inch
Width Of Screening Table	950 mm	3 ft 1 inch
Transportation Height	2950 mm	9 ft 8 inch
The Maximum Capacity	300 m³/h	400 y³/h
Weight	12500 Kg	27600 lbs
Diesel Generator	–	55.4 Kw(74hp)
Transmission	–	4 individual hydraulic circuits
Hooper Volume	3 m³	8 ft 2 inch
Hopper Length	3500 mm	11 ft 5 inch
Belt Width	1200 mm	3 ft 11 inch
Feeding Height	2850 mm	9 ft 4 inch
Feeder Capacity	300 m³/h	400 y³/h
Discharge Height Of Fine Material Conveyor	3000 mm	9 ft 10 inch
Discharge Height Of Side Conveyor	1500 mm	20-40 gal/min
Dependent On Material**	up to 250 m³/h	up to 330 y³/h

Easily transported the Combi E8 is a nonclogging screening plant for processing various materials and preparing topsoil. Track mounted Combi E8 can be driven by remote controller. The remote controlled functions can be customized to suit your requirements. The Combi can be equipped with an optional feeder for fertilizers or stabilizers like lime.

Easy to transport. Both conveyors can be folded away for transportation. A 3 cubic metre feeder unit, feeds soil through an aggressive fragmentor to the screening table. Depending on the configuration of the blades the end product can be from approx 7mm to 100mm. Screened fines will continue to the fine material conveyor while oversize will be conveyed to the side of the plant. Powerful 74 HP CAT engine.



/ REMU RECYCLING BUCKET RANGES

Remu Screening Buckets are an ideal recycling solutions. A multifunctional tool for padding, mixing, separating and crushing. These buckets are used in-situ for council recycling collections, greenwaste, bio waste, manure, builders rubble, gyprock, landscaping, asphalt millings or shoreline cleanups. Whether you are a contractor, roadbuilder, pipeliner, landscaper or in mining Remu has several options to choose from. From the crossover buckets with the interchangeable modules within the bucket frame to the PD buckets.

Each rotor has a direct drive radial piston motor to divide the power of the bucket equally. Remu Screening buckets are used for recycling landfill, composting, padding pipelines, backfill for underground mining, crushing cement sheets, bricks and rubble. Interchangeable sized rotors enable various sized products to suit your needs.

FOR **PADDING,**
MIXING,
SEPARATING
AND **CRUSHING**

SPECIFICATION	UNIT	EL 2085	XO 2090+SB/SC	XO 2090+SV	XO 2150+CM	XO 2150 SV	XP 3150	EP 4150	EX 140	EE 3160	EE 3220	EE 4160	EE 4220	EE 4290	PD 2160	PD 3160
Carrier Weight – Excavator	Ton	3-5	7-12	5-12	13-20	8-20	14-20	18-25	16-24	25-30	35-40	30-40	40-50	N/A	25-35	30-40
Carrier Weight – Loader	Ton	1-3	4-6	4-6	6-12	6-12	7-12	9-16	N/A	12-15	14-20	14-17	18-25	21-30	9-12	10-16
Hydraulic Flow	l/min	25-35	32-80	20-40	50-120	20-80	155-95	80-110	155-235	150-220	150-220	150-220	180-280	180-280	80-160	200-300
Max Hydraulic Pressure	bar	110	300	300	250	300	210	210	210	210	210	210	250	250	300	300
Width (A)	cm	109	125	125	185	185	109	190	126	200	260	200	260	330	214	214
Depth (B)	cm	63	97	113	125	109	123	123	128	169	169	169	169	175	166	166
Height (C)	cm	64	88	88	88	88	119	139	137	158	158	180	180	180	137	160
Weight	kg	240	510	385	810	510	1280	1500	1400	2500	3050	2850	3500	4500	2500	2930
Volume ISO	m³	0.15	0.32	0.32	0.52	0.52	1.0	1.3	0.9	2.1	3.0	2.7	3.7	4.8	1.4	2.0
Volume SAE	m³	0.18	0.37	0.37	0.60	0.60	1.1	1.4	1.1	2.4	3.3	3.0	4.2	5.5	1.7	2.3
Screening Area	m²	0.2	0.5	0.5	N/A	0.7	1.1	1.4	0.8	1.5	1.9	1.8	2.5	3.3	1.1	1.5

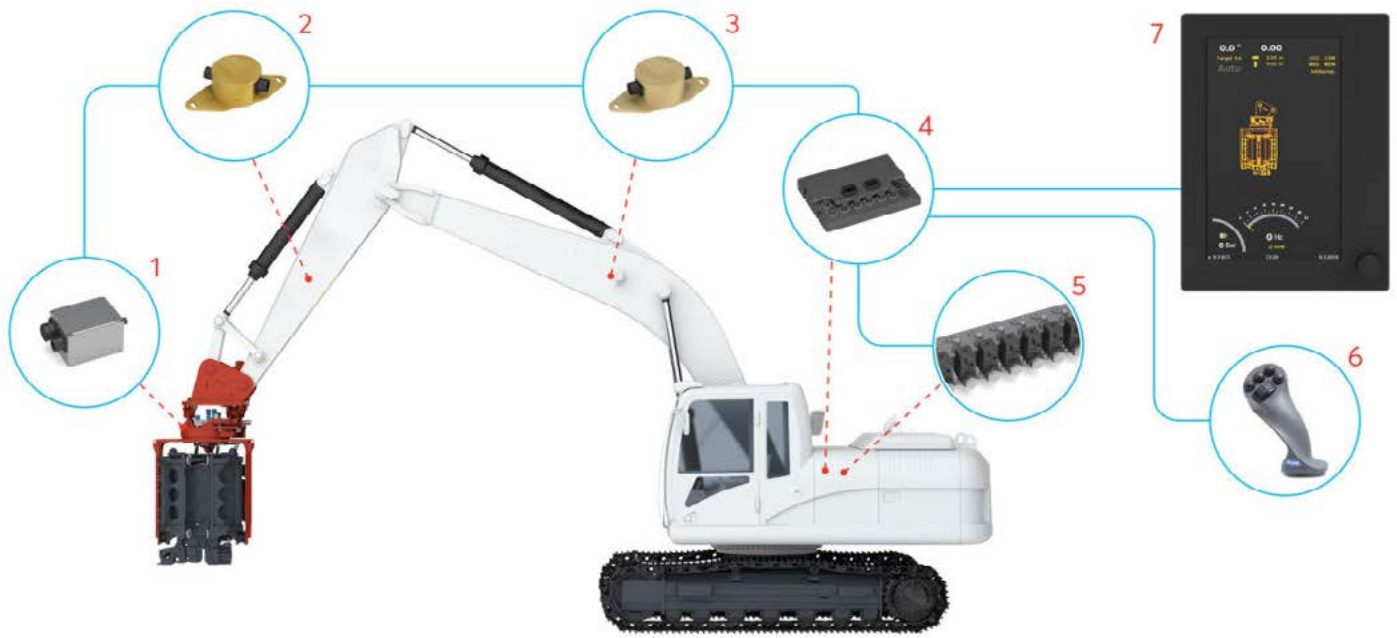
/MOVAX CONTROL SYSTEMS

FEATURES	LITE	PRO	PRO+AUTO
Colour Display	3.2"	7"	7"
Ergonomic Control Grips With Thumb Wheels	✓	✓	✓
Proportional Control For Excavators Aux Hydraulics	✓	✓	✓
Frequency / RPM (SG Vibro)	✓	✓	✓
Impact Energy Rate (Piling Hammer)	✓	✓	✓
Movax Angle (Bucket Cylinder Operated)	✓	✓	✓
Movax Angle (Side Tilt)	✓	✓	✓
Distance And Height Position	N/A	✓	✓
Auto Control	N/A	Optional	✓
System Diagnostics	✓	✓	✓
Camera Input	N/A	Optional	Optional
Wireless Site Camera On Tripod	N/A	Optional	Optional
Software Update Via Usb Memory Stick	N/A	Optional	Optional

The MOVAX Control System (MCS™) links the excavator with MOVAX's pile drivers, piling hammers, piling drills and leader masts. The system controls the auxiliary hydraulics of the excavator and all the functions of MOVAX's piling and drilling equipment. The system utilises inclination and pressure sensors to monitor for instance the pile driving process – thus assisting the operator to achieve better efficiency, increased productivity and higher accuracy

The Movax Control Systems feature ergonomic display and informative user interface. Available in three versions from a basic control system to an automated system providing information concerning the piling process. The control grips feature switches and thumbwheels to effortlessly control all functions.

Demo content 2 DNB Range are a powerful and reliable Rockbreaker with proven performance of over 30 years in the Australian market. They feature a strong impact energy and a variable impact rate which increases breaking frequency whilst decreasing time needed to get the job done. Designed in order to break the hardest of rocks in the world, Blue Granite, the DNB Rockbreaker has the best of raw materials used to build each part of the hammer. The DNB Rockbreaker gives you the best bang for your buck.



1 MOVAX module 2 Stick boom sensor 3 Main boom sensor 4 Excavator module 5 Valve Block 6 Grips 7 Display

/MOVAX MANIPULATOR RANGES

Designed for fast, flexible and efficient handling of different types of masts, gantries and poles as well as a wide range of piles. The MOVAX manipulator is built for superior maneuverability, safety and accuracy. The manipulator is capable of handling different kinds of profiles ranging from double U-, U-, H-, and I- to rectangular and tubular shapes as well as sheet piles, tubular piles, timber piles and precast concrete piles. Soft gripping surfaces prevent damaging sensitive masts, gantries or poles. The MOVAX Manipulator is controlled by the MOVAX Control System for fast, precise and easy operation with the utmost safety.

Designed for fast, precise and efficient operation and suitable for a wide range of applications. The soft gripping surfaces prevent damaging sensitive masts, gantries or poles. Gripping surfaces are available tailor-made for the profile handled. Controlled by the Movax Control System.

SPECIFICATION	UNIT	MPM-4000
Weight with Standard auger (excl adaptor)	Kg	1950
Width	mm	960
Depth	mm	2050
Height	mm	1580
Oil Flow Rate	l/min	85
Pressure Relief Set Max.	bar	350
Pressure Setting	bar	180
Tilt Angle	°	+/- 360
Rotation Angle	°	+/- 60
Depth w/o adaptor	mm	0
Maximum Torque	Nm	0
Crowd Force	kN	0
Retraction Force	kN	0



/MOVAX PILE DRIVER

MOVAX is a world leading developer and supplier of excavator-mounted piling equipment and the inventor of modular, vibratory side grip pile driver-technology. Movax offers an optimised way-of-working for higher productivity and significant savings. The Movax Side-Grip sheet piler is a unique hydraulically driven sheet piling system with an advance control system that enables the operator to work in various site conditions and limited spaces. The Side Grip system makes sheet piling quicker, safer and also speeds up pile handling tasks, driving and extracting long piles while a standard excavator can be used as a carrier.

The Movax SideGrip Piledrivers attaches to the end of the dipper arm of an excavator and is able to be rotated both vertically and horizontally. The multi-rotational ability allows the Movax to pick a pile of a stack, self pitch it and then drive to the level required. With the unit fixed to the excavator arm enabling piles to be driven where access is awkward. The SG vibratory units are suited to a range of excavator sizes including long reach machines. Pile accuracy is monitored via the Movax Control Systems.

WORLD LEADER IN EXCAVATOR-MOUNTED PILING EQUIPMENT

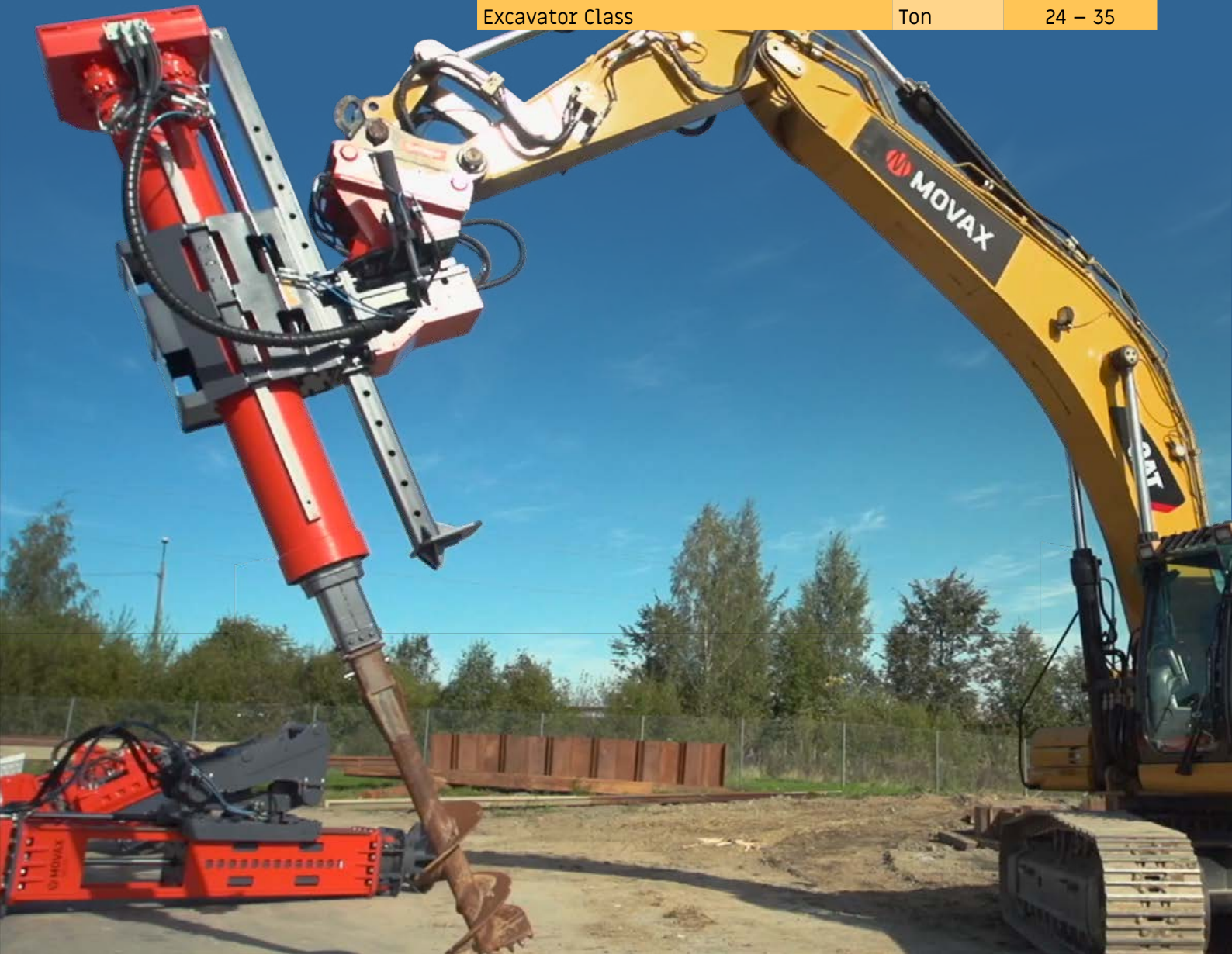
SPECIFICATION	UNIT	SG-15N	SG-30N	SG-40N	SG-45	SG-45V	SG-50	SG-50V	SG-60	SG-60V	SG-75	SG-75V
Weight (excl adaptor)	Kg	750	1790	1814	2322-2553	2422-2653	2327 – 2558	2327-2558	2460-2691	2460-2691	3330-3588	3330-3588
Width	mm	850	1193	1193	1193	1193	–	–	1193	1193	1270	1270
Centrifugal force, max	Kn	150	300	400	450	450	500	500	600	600	750	750
Depth	mm	930							1180-1463	1180-1463	–	–
Driving Method	–	Vibration	Vibration	Vibration	Vibration	Vibration	Vibration	Vibration	Vibration	Vibration	Vibration	Vibration
Eccentric moment	kgm	1.6	3.1	4.1	4.6	4.6	5.1	5.1	6.1	6.1	7.6	.6
Engine power, min	kW	39	65	86	100	100	125	125	134	134	184	184
Frequency	l/min	2300-3000	2300-3000	2300-3000	2300-3000	2300-3000	2300-3000	2300-3000	2300-3000	2300-3000	2300-3000	2300-3000
Ground Vibration	–	Normal	Normal	Normal	Normal	Low	Normal	Low	Normal	Low	Normal	Low
Height	mm	1600	2021	2021	2478	2478	2478	2478	2478	2478	2560	2560
Pressure Setting	bar	200	350	350	350	350	350	350	350	350	350	350
Resonance-free Start/Stop			No	No	No	Yes	No	Yes	No	Yes	No	Yes
Return Pressure, max	bar	5	5	5	5	5	5	5	5	5	5	5
Swing Angle	°	+/- 360	+/- 280	+/-280	+/- 360	+/- 360	+/- 360	+/- 360	+/- 360	+/- 360	+/- 360	+/-360
Tilt Angle	°	+/- 30	+/- 30	+/-30	+/- 30	+/- 30	+/- 30	+/- 30	+/- 30	+/- 30	+/- 30	+/-30
Excavator Class	Ton	7-11	13-16	17-21	20-24	20-24	23-28	23-28	28-32	28-32	33-40	33-40
Retraction force	kN	140										

/MOVAX PILING DRILL RANGES

Movax Piling Drills are excavator mounted, auger drive attachments for in-situ piling and other drilling works. The technology behind the efficiency is a hydraulically operated telescopic bar with one or two extendable sections which can reach depths up to 10 metres.

The Movax Pile Drills are suitable for different site conditions including those with limited headroom. Hydraulically operated telescopic kelly bar with extendable sections. Excavator mounted it is operated with normal auxiliary hydraulics.

SPECIFICATION	UNIT	TAD-32
Weight (excl adaptor)	Kg	3500
Width	mm	1013
Auger Pressing Force	N	15000
Auger Pulling Force	N	600000
Depth	mm	1893
Drill Speed Range	rpm	11-74
Height w/o Auger	mm	5355
Hole Depth	m	9
Hole Diameter *	mm	400-1200
Max return Pressure	bar	5
Oil Flow Rate	l/min	75-250
Return Pressure, max	bar	5
Side Tilt Angle	°	+/- 30
Torque	Nm	30000
Excavator Class	Ton	24 – 35



/MOVAX PILING HAMMER RANGES

Suitable for a wide range of applications, differing site and soil conditions, the MOVAX Pile driver features a high degree of precision even in the most sensitive areas or when limited space is available. Designed to work off normal auxiliary hydraulics on standard excavators and available in different models & sizes to meet a large range of piling requirements. High frequency available with fixed or variable eccentric moment. Available for most piles including sheet piles, H-piles, tubular piles, timber piles etc. Can be controlled with the Movax Control System (MCS), MCS Lite, MCS Pro or MCS Pro+Auto and also available with the Movax Information Management System (MIMS).

Suitable for different site and soil conditions. Suitable for a wide range of pile, including sheet piles, H-beams, tubular steel piles, timber piles, concrete piles etc. Excavator mounted or excator leader mast mounted, designed to work with normal auxiliary hydraulics. Tilt +/- 15 degrees. Available with rotation device +/- 60 degrees (optional for DH-15 an DH-25 only). Can be controlled with the Movax Control System (MCS), MCS Lite, MCS Pro or MCS Pro+Auto and also available with the Movax Information Management System (MIMS)

SPECIFICATION	UNIT	DH-15	DH-25	DH-35	DH-45
Weight (excl adaptor)	Kg	3500	4260	5390	6500
Blows per minute	1/min	0-100	0-100	0-100	0-100
Drop Height	mm	0-1200	0-1200	0-1200	0-1200
Frame Width	mm	500	500	650	650
Height	mm	3850	4460	4460	4930
Impact Energy	kNm	0-15	0-25	0-35	0-45
Oil Flow Rate	bar	120	120	120-0	120
Operating Pressure	bar	150	200	250	250
Pressure Relief Set Max.	bar	350	350	350	350
Ram Weight	kg	1360	2060	3000	4000
Tilt Angle	°	+/- 15	+/- 15	+/- 15	+/- 1
Rotation Angle	°	+/- 60	+/- 60	+/- 60	+/- 60
Transport Depth	mm	1870	1870	1870	1870
Transport Width	mm	1200	1200	1200	1200
Excavator Size	Ton	20-30	25-40	33-40	35-50



/MOVAX PRE AUGER RANGES

MOVAX Pre-Augers are an excavator mounted auger drive attachment used for pre-augering in difficult and demanding soil conditions. Used for supporting the MOVAX Side Grip Pile Driver and Piling Hammers the Pre-Augers are controlled with the same MOVAX Control System (MCS) for ease of operation. The perfect solution for enabling easier and faster pile driving.

Fast and Flexible to operate the Pre Auger features excellent reach with a simple and strong design. Engineered for long continuous operation and constructed using quality materials and parts. Efficient pre-augering, suitable for different site conditions and also for sites with limited headroom. Enables easier and faster pile driving.

Demo content 2 DNB Range are a powerful and reliable Rockbreaker with proven performance of over 30 years in the Australian market. They feature a strong impact energy and a variable impact rate which increases breaking frequency whilst decreasing time needed to get the job done. Designed in order to break the hardest of rocks in the world, Blue Granite, the DNB Rockbreaker has the best of raw materials used to build each part of the hammer. The DNB Rockbreaker gives you the best bang for your buck.



SPECIFICATION	UNIT	PA-50L
Weight (excl adaptor)	Kg	2600
Width	mm	1037
Depth	mm	–
Height w/o Auger	mm	9966
Oil Flow Rate	l/min	196
Operating Pressure	bar	320
Tilt Angle	°	+/- 8
Depth w/o Adaptor	mm	1005
Drill speed range	Rpm	0-20
Drilling depth, 25-30 t	m	–
Drilling depth, 30-25 t	m	–
Drilling speed (low torque)	Nm	–
Drilling speed (high torque)	Nm	–
Maximum Torque	Nm	50000
Crowd Force	kN	135
Retraction force	kN	140
Excavator Class	Ton	30-40

SPECIFICATION	UNIT	PA-50S
Weight (excl. adapter)	kg	4900
Height w/o auger	mm	11200
Depth w/o adapter	mm	1500
Width	mm	1300
Operating pressure	bar	350
Oil flow rate	l/min	240
Drilling depth, 30-35t	m	≤ 8,5
Tilt angle	°	+/- 8
Maximum torque *	Nm	50000
Rotation speed	rpm	0-40
Crowd force	kN	25
Extraction force	kN	57
Auger diameter	mm	400

/MOVAX PILING LEADERS RANGES

SPECIFICATION	UNIT	MPL-12
Weight (excl. adapter)	kg	6800
Height	mm	15800
Depth	mm	1500
Width	mm	1890
Travel, max.	m	12.3
Side tilt, left/right	°	+/- 3.5
Rotation, right/left	°	+/- 28
Main winch		
- capacity, lifting	t	12
- capacity, pulling	t	6
- speed	m/min	0 - 40
Auxiliary/service winch		
- capacity	t	3
- speed	m/min	0 - 40

SPECIFICATION	UNIT	MPL-6
Weight (excl. adapter)	kg	1800
Height	mm	7800
Depth	mm	905
Width	mm	1120
Feed speed	m/s	19
Travel, max.	m	5650
Side tilt, left/right	°	+/- 15
Side shift	mm	127
Pull force	kN	24
Crowd force	kN	16

EXCAVATOR MOUNTED MULTI-TOOL PILING LEADERS

- Suitable for different site and soil conditions
- Available with a wide range of piling equipment (tooling) from vibratory pile drivers, hydraulic double-acting piling hammers and/or hydraulic hammers to rotary drives for piling and pre-augering
- Suitable for driven piles, including sheet piles, H-beams, tubular steel piles, and precast concrete piles, cast-in-situ and CFA piling as well as pre-augering
- Excavator-mounted; stick-, boom- or chassis-mounted depending on MOVAX leader model and excavator class. Designed to work on a standard excavator with normal auxiliary hydraulics
- Controlled with the MOVAX Control System (MCS ProL)



PRACTICAL AND COST-EFFECTIVE EQUIPMENT HIRE

For many of you, work requirements change from week to week, and in some cases, from day to day, which makes hiring equipment both practical and cost-effective.

When you need to hire equipment to address your changing attachment needs, you can trust us to help you get the job done. Our hire fleet of over 70 rock breaking units are highly maintained on a regular basis to ensure they are always in perfect working order, providing you with productive, powerful and reliable results when you need them most.

Boasting the most versatile hire fleet available in Western Australia, our experienced team can help you with any application you require. Our wide range of hire equipment extends to compactors, rippers, shears, grabs, crushing and screening buckets, with over 250 top mounts that can accommodate most makes and models.

If you are unsure about your requirements or don't know your machine specifications, you can rest assured that our friendly Technical Advisors can assist you in matching the correct attachment for your machine, application or specific job.

LONG-TERM OR SHORT-TERM HIRE

Your demands are flexible, and so are we. Whether you require a temporary rockbreaker while your equipment is being serviced, need a quick solution to overcome a breakdown, or just want to try before you buy, we can help, with both long and short-term hire options available.

What's more, we continually invest in our hire fleet so you can be sure that we offer the latest technology and highest quality equipment.

SUPPORT EVERY STEP OF THE WAY

Nothing can hurt a business more than unnecessary downtime. As such, we know that having essential available spare parts can make a huge difference to your operations. That's why our experienced team are committed to helping you every step of the way, with our dedicated after sales support.

Whether your machine has broken down and requires repair, or you need to replace a part, we will work with you to make sure your valuable machinery is always kept in top condition.



**YOU CAN
TRUST US
TO HELP YOU GET
THE JOB DONE**

DM **BREVKER** equipment

25 Valencia Way | Maddington | WA | 6109

e sales@dmbreaker.com

t +61 8 9452 1112

f +61 8 9452 1113

dmbreaker.com.au