

PIT MASTER LED LIGHTING TOWER

A4HTM1500

48V



LED Mobile Lighting Tower

The Pit Master Single Axle Hydraulic LED lighting tower has been designed to deliver the most powerful lighting, low maintenance and cost saving solution to a diverse range of industry sectors. With built-in auto start/stop, hydraulic boom and stabiliser legs, site setup can be achieved within a minimum timeframe.



- 4 x 300W Heavy Duty LED Lights
- 48 V DC Extra Low Voltage
- Quiet 66db Noise Level
- Simple User Friendly Operation
- From 0.8 L/h Fuel Consumption Efficiency
- Light Life 30,000 hours
- Immediate Light Start Up
- Low Carbon Emissions
- Mine Site Ready
- 140L Fuel Tank Capacity

**World's
Leading
Manufacturer
of Customer
Solutions**

The world's leading manufacturer of the most powerful Extra Low Voltage LED Lighting Towers available and the only manufacturer that provides a full range of LED Lighting Towers for all applications within the Mining, Industrial and Construction sectors.

TRUSTED BY MAJOR MINE SITES AND ALL CONSTRUCTION COMPANIES

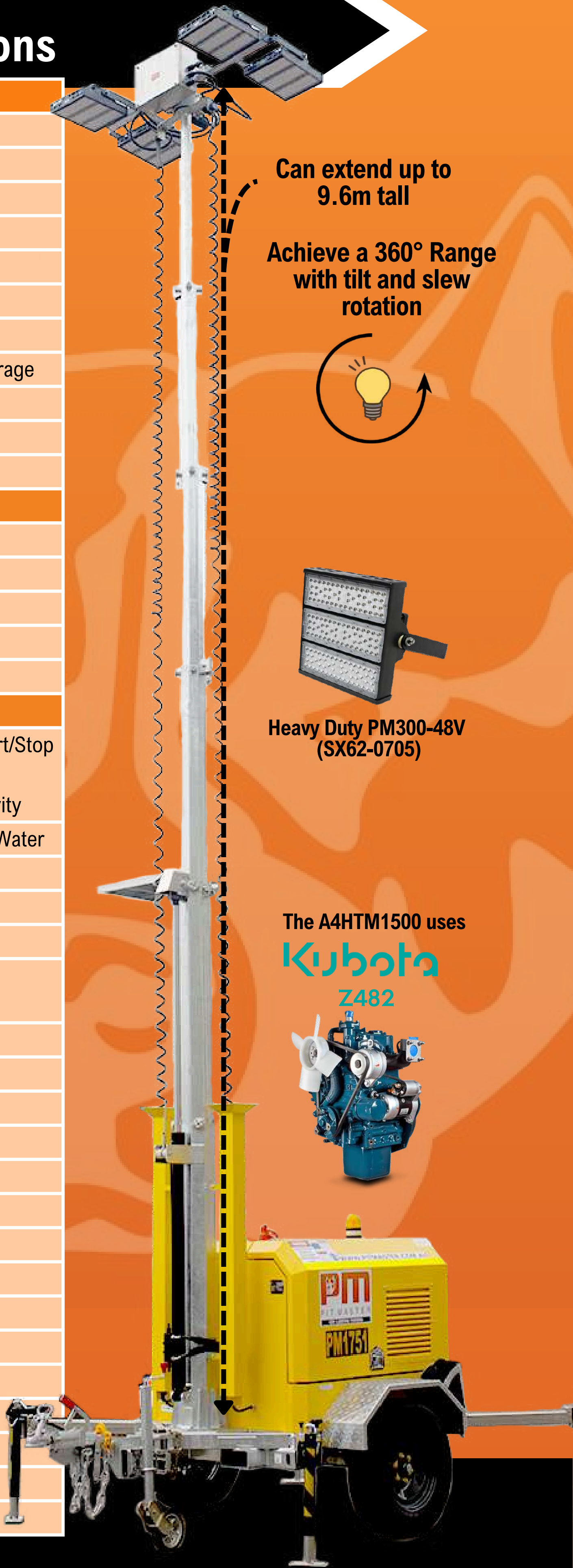


- International Services**
- Innovative Low Cost Solutions**
- High Quality, Reliable Products**
- Continuous Improvement**

Phone 1300 14 SCIG
FIND OUR FULL RANGE OF LIGHTING TOWERS AT
WWW.PITMASTER.COM.AU

A4HTM1500-48V Specifications

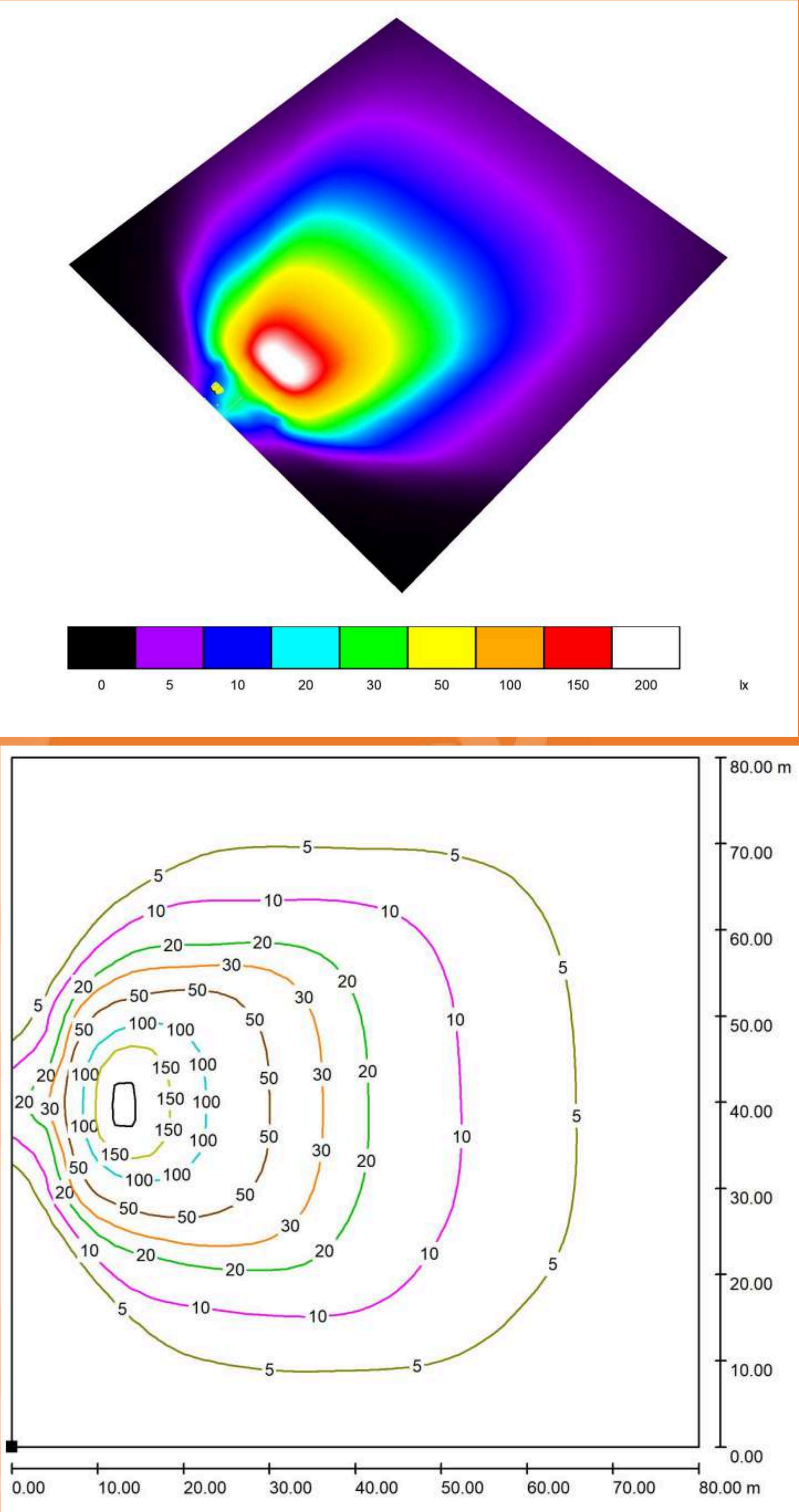
Technical Data	
Lights	4 x Pit Master H-Duty PM300-48V
Light Output	204,000 Lumens (1200W)
Tower Voltage	48V DC
Wind Rating	1814-05-001 (110km/h)
Alternator	PMG 5kW
Engine	Kubota Z482
Fuel Tank Capacity	140L
Boom Rotation	Electric Rotation, 100% Ground Coverage
Boom	Hydraulic Lift / Extension
Legs	Manual
Noise Level	66db
Dimensions / Measurements	
Height	2865 mm
Length	3000 mm
Width	1782 mm
Mast Extended Height	9.6 m
Weight (Tare)	1,425 kg
Standard Inclusions	
Controls	Electronic Programmable - Auto Start/Stop OR Optional - Full Remote Connectivity
Engine Protection	Fail Safe Shutdown - Temp, Oil, and Water
Radiator	Pressure Safe Radiator Cap
Battery Isolation	Double Pole with Lockout
Start Isolation	Standard Fitment with Lockout
MDG15 Electric Compliance	As Per Regulated Standards
MDG41 Hydraulic	As Per Regulated Standards
E-Stop	Standard Fitting
Wheel Chocks	Standard Inclusion
Chassis/Sub Frame	Hot Dipped Galvanised
Mud Guards	Hot Dipped Galvanised
Fuel Tank	Double Bunded
Tow Hitch	50mm Ball or 75mm Pintle Ring
Jockey Wheel	Heavy Duty Swingaway
Wheel Nut Indicators	Standard Fitment
Fire Extinguisher	4.5kg Standard
Oil Recovery	Wiggins Oil Evacuation Kit
Fuel Recovery	Fuel Evacuation Pump
Jump Start	Cat or Anderson Plug
Service Upgrades	500hr Water Separator/Filter & Sump
Draw Bar	Foldaway / Transport Brake



Phone 1300 14 SCIG
WWW.PITMASTER.COM.AU

Email: info@pitmaster.com.au
134-140 Diesel Drive, Paget Mackay Queensland

Light Plot Specifications	
Components	4 x PM300-48V
Height	9m
Angle	75°
Average Luminous Flux	16
Max. Luminous Flux	216



Values in Lux (lx) , Scale 1:626