



AutoLift AL-4000S2A Alignment

Heavy Duty Hydraulic Vehicle Hoist

4000 Kg capacity

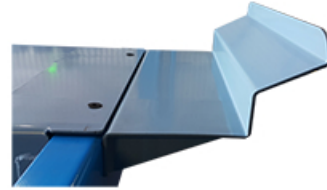
Four Post Hoist with Wheel Alignment Facilities

Complete with 2 Jacking Beams

Bonus Inclusions:

Specification

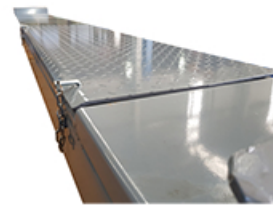
- Height overall: 2274 mm
- Width overall: 3643 mm with power unit
- Length overall: 5775 mm inc ramp
- Lifting height: 208~1850 mm
- Air Supply: 0.6-0.8 Mpa
- Lifting capacity: 4000 kg
- Power: 240V/50Hz/1Ph (15 Amp)
or 415V/50Hz/3Ph (20 Amp)
- Net weight: 1530 kg
- Gross weight: 1650 kg
- Packing Size: 4700*710*1100mm



Front Wheel Stops



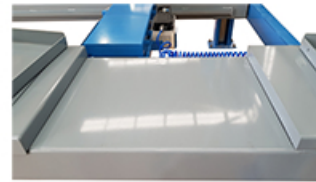
Heavy Duty 2 Tonne Jacking Beams



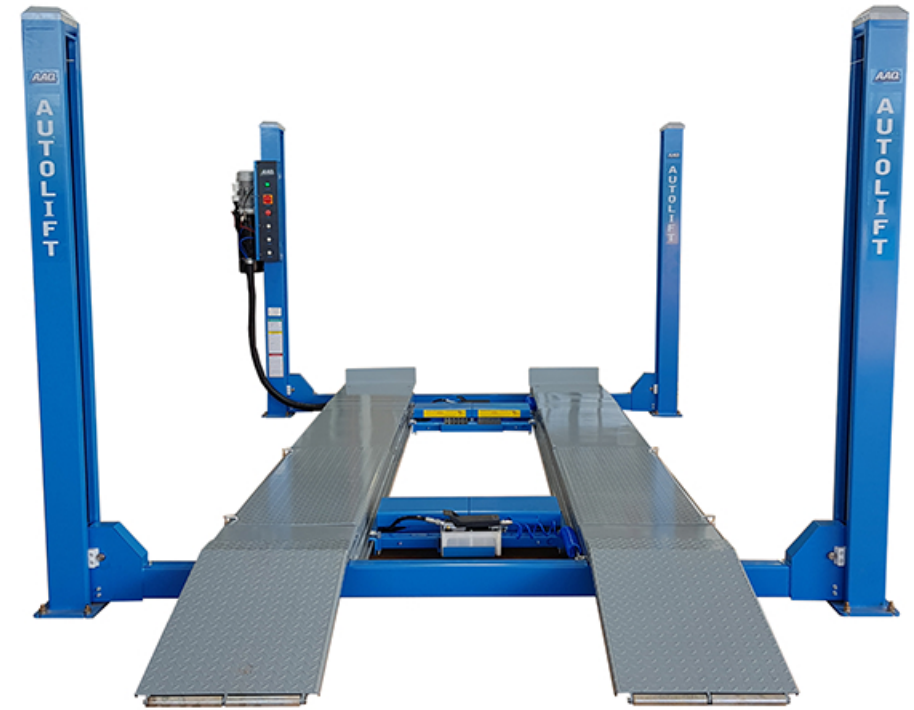
Wheel Alignment Rear Slip Plates



Fully Enclosed Power Unit



Turntable Recesses With Filler Plates



Features

- WorkSafe Design Registered
- Integrated rear slip plates included.
- Optional turn table plates.
- Heavy duty construction.
- Extra long rollers on run up ramps.
- Extra wide between columns for larger vehicles.
- Fully enclosed power unit.
- Top column cover caps.
- Fully enclosed lifting cables and air safety locks.
- Multi position safety locking ladders in each column.
- Single hydraulic cylinder mounted underneath runway.
- Complete with 2 x 2 tonne air operated jacking beams.

