

**WHEEL &  
AXLE  
WEIGHING**

**ASSOCIATED  
SCALE SERVICES**

www.associatedscales.com.au 07 3272 0077



**LIGHT  
WEIGHT**

**REMOVABLE  
RAMPS**

**10t  
CAPACITY  
PER PAD**

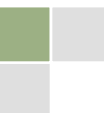
**LOW  
PROFILE**

## ASWP-10t Wheel Weigh Pad



Simple operation when used with LP7561 Wheel Pad Controller

**Associated Scale Services Pty Ltd**  
**Ph: +61 (0)7 3272 0077**  
**Email: info@associatedscales.com.au**  
**Web: www.associatedscales.com.au**

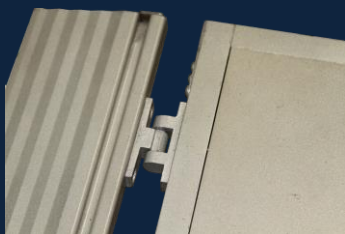


## Specifications

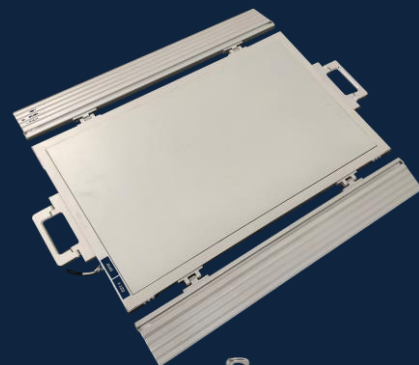
Number of Pads	2 PADS ARE REQUIRED FOR AN AXLE (The Lp7561 is capable of weighing an axle then the next etc until a complete truck is weighed then offering a total at the end of the process using only 2 wheel pads) ENSURE THAT THE SIZE OF THE WEIGH AREA IS ACCEPTABLE FOR THE WEIGHING OF A TYRE.
Capacity of Pads	Each Pad 10,000kg x 10kg
Pad Size:	Weighing Area/ Pad 419mm Wide x 721mm Length Complete Size/ Pad 722mm Wide x 927mm Length Height: 19mm
Weigh Pad Construction	Steel / Aluminum (Painted)
Pad Operation	Must be used on a clean, smooth, level surface

### OPTIONAL AXLE CONTROLLER

Display CONTROLLER (OPTIONAL)	Lp7561 Single Display with Back Light Displays the weight and the token for the pad or for the total weight.
Operation	A single button for toggling between the wheel weights
Printer	Single Printer Format with all the wheel weights/ axles and total in one print (refer below)
Powered	a. Mains Powered via power adaptor b. Internal Rechargeable Battery (Battery recharged via power adaptor)
Housing	Aluminum Case

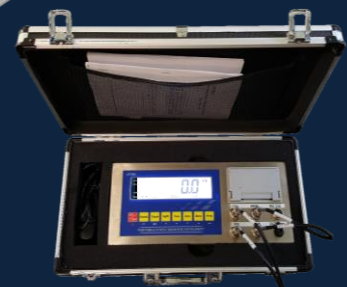


Weigh Pad Ramps simple and easily lock into place and easily removed when the system needs to be relocated



**Weight Indicator Carry Case**

**LP7561**



Associated Scale Services Pty Ltd  
Ph: +61 (0)7 3272 0077

Email: [info@associatedscales.com.au](mailto:info@associatedscales.com.au)  
Web: [www.associatedscales.com.au](http://www.associatedscales.com.au)