



SENFENG LEIANG
LASER

SENFENG LEIANG
LASER

Authorized distributor in Australia

ALPHA CNC GROUP PTY LTD

21/2-4 Picrite Close, Pemulwuy NSW 2145

Phone: 02 9683 6117

Web: www.alphacnc.com.au

Felix Yan

Mobile: 0420 206 745

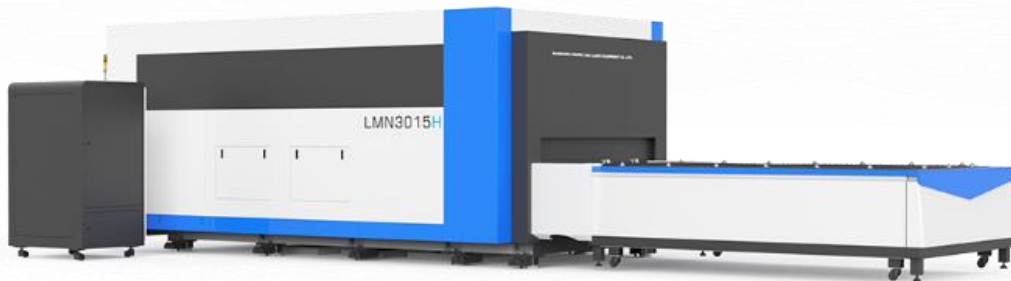
Email: felix_yan@alphacnc.com.au

ALPHA SENFENG Fiber Laser Cutting Machine

SF3015H-3000/4000/6000



Specifications :



| Model | SF3015H |
|----------------------|---|
| Cutting Table Size | 1500mm*3000mm |
| X-axis Travel | 3000mm |
| Y-axis Travel | 1500mm |
| Z-axis Travel | 80mm |
| Laser Power | 3KW/4KW/6KW/8KW |
| Positioning Accuracy | ±0.05mm |
| Repetitive Accuracy | ±0.02mm |
| Maximum Speed | 100m/min |
| Power | 3 Phase 415V/50Hz /100A |
| Machine Weight | 7500KG |
| Dimension | 8300*2270*2340mm |
| Laser Source | Raycus fiber laser 3KW/4KW/6KW |
| Laser Head | Raytools |
| CNC Controller | Cyrcut - PC based CNC - easy integration into factory network |
| Cabinet Electrical | SIEMENS/Schneider |
| Machine Frame | SF3015H |
| Water Chiller | Specialized for 4KW fiber laser |
| Dust Exhausting Fan | 3KW |



Features:

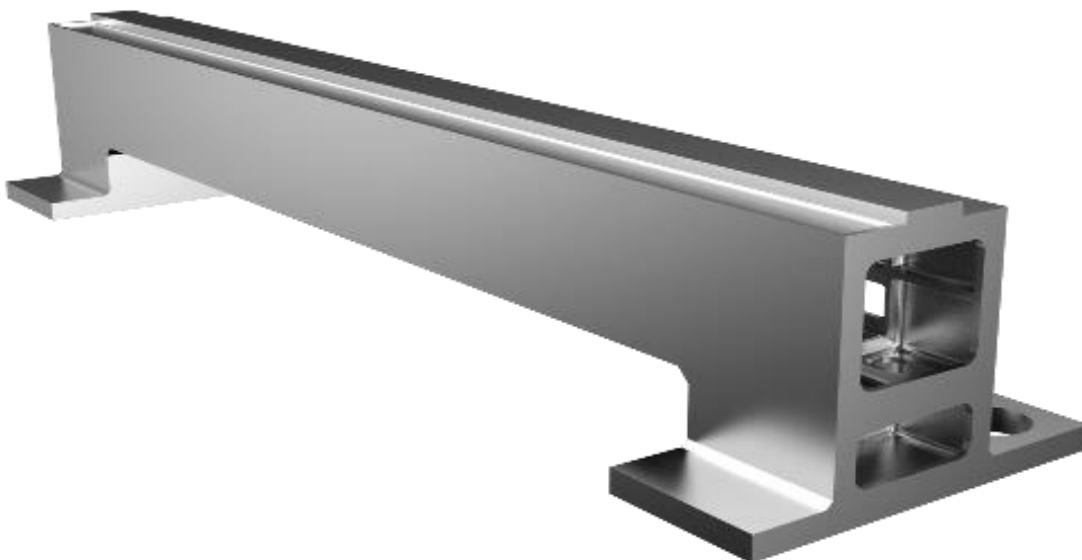
Pipe Welding Frame

Whole machine is machined by high accuracy CNC gantry machine center, 600° C heat treatment has been done on the machine frame, which gives Alpha SENFENG laser cutting machine a minimum 20 years life without mechanical distortion.



Cast Aluminium Beam

Light cast aluminium beam has been adopted to guarantee fast and high precision cutting





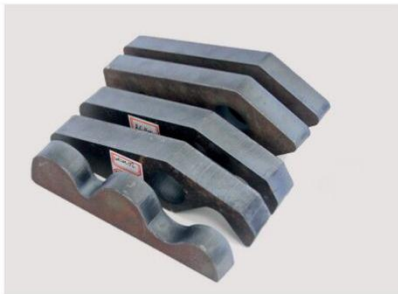
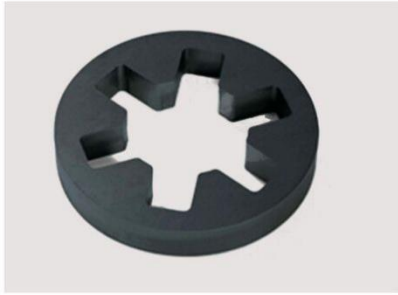
Application & Capability

Materials:

Carbon steel - Stainless steel - Aluminum alloy – Brass – Copper - Galvanized Steel - Titanium

Thickness:

0.5-20mm carbon steel - 0.5-10mm stainless steel - 0.5-8mm aluminium - 0.5- 5mm brass



Industries:

Sheet metal manufacturing, Automobile, machinery manufacturing, elevator manufacturing, household appliances, kitchen and sanitary ware, signage, and other machinery manufacturing and processing industries.





Cutting Parameters 3KW laser

red font parameter is not suitable for production cutting

| Material | Thickness (mm) | Cutting speed (m/min) | Cutting Gas |
|-----------------|----------------|-----------------------|-------------|
| Stainless steel | 1 | 40 | N2 |
| | 2 | 22 | N2 |
| | 3 | 10 | N2 |
| | 4 | 6 | N2 |
| | 6 | 2.5 | N2 |
| | 8 | 1.1 | N2 |
| | 10 | 0.8 | N2 |
| Carbon steel | 1 | 33 | N2 |
| | 2 | 18 | N2 |
| | 3 | 4 | O2 |
| | 4 | 3.5 | O2 |
| | 6 | 2.5 | O2 |
| | 8 | 2.1 | O2 |
| | 10 | 1.4 | O2 |
| | 12 | 1.0 | O2 |
| | 14 | 0.8 | O2 |
| | 16 | 0.7 | O2 |
| | 20 | 0.5 | O2 |
| | Brass | 1 | 26 |
| 2 | | 14 | N2 |
| 3 | | 6 | N2 |
| 5 | | 2.0 | N2 |
| Aluminum | 1 | 32 | N2 |
| | 2 | 16 | N2 |
| | 3 | 7.5 | N2 |
| | 4 | 5.5 | N2 |
| | 5 | 3 | N2 |
| | 6 | 1.8 | N2 |



Cutting Parameters 4KW

| Material | Thickness (mm) | Cutting speed (m/min) | Cutting Gas |
|-----------------|----------------|-----------------------|-------------|
| Stainless steel | 1 | 40 | N2 |
| | 2 | 22 | N2 |
| | 3 | 12 | N2 |
| | 4 | 7 | N2 |
| | 6 | 3.2 | N2 |
| | 8 | 1.6 | N2 |
| | 10 | 1.0 | N2 |
| Carbon steel | 1 | 33 | N2 |
| | 2 | 18 | N2 |
| | 3 | 10 | N2 |
| | 3 | 4.5 | O2 |
| | 4 | 3.5 | O2 |
| | 5 | 3.2 | O2 |
| | 6 | 2.8 | O2 |
| | 8 | 2.3 | O2 |
| | 10 | 1.8 | O2 |
| | 12 | 1.5 | O2 |
| | 14 | 1 | O2 |
| | 16 | 0.8 | O2 |
| | 20 | 0.7 | O2 |
| Brass | 1 | 28 | N2 |
| | 2 | 15 | N2 |
| | 4 | 5 | N2 |
| | 6 | 2.3 | N2 |
| Aluminum | 1 | 30 | N2 |
| | 2 | 20 | N2 |
| | 3 | 11 | N2 |
| | 4 | 6.5 | N2 |
| | 6 | 2.8 | N2 |
| | 8 | 1.2 | N2 |



SENFENG LEIMING
LASER

SENFENG LEIMING Workshop & Showroom



USA branch



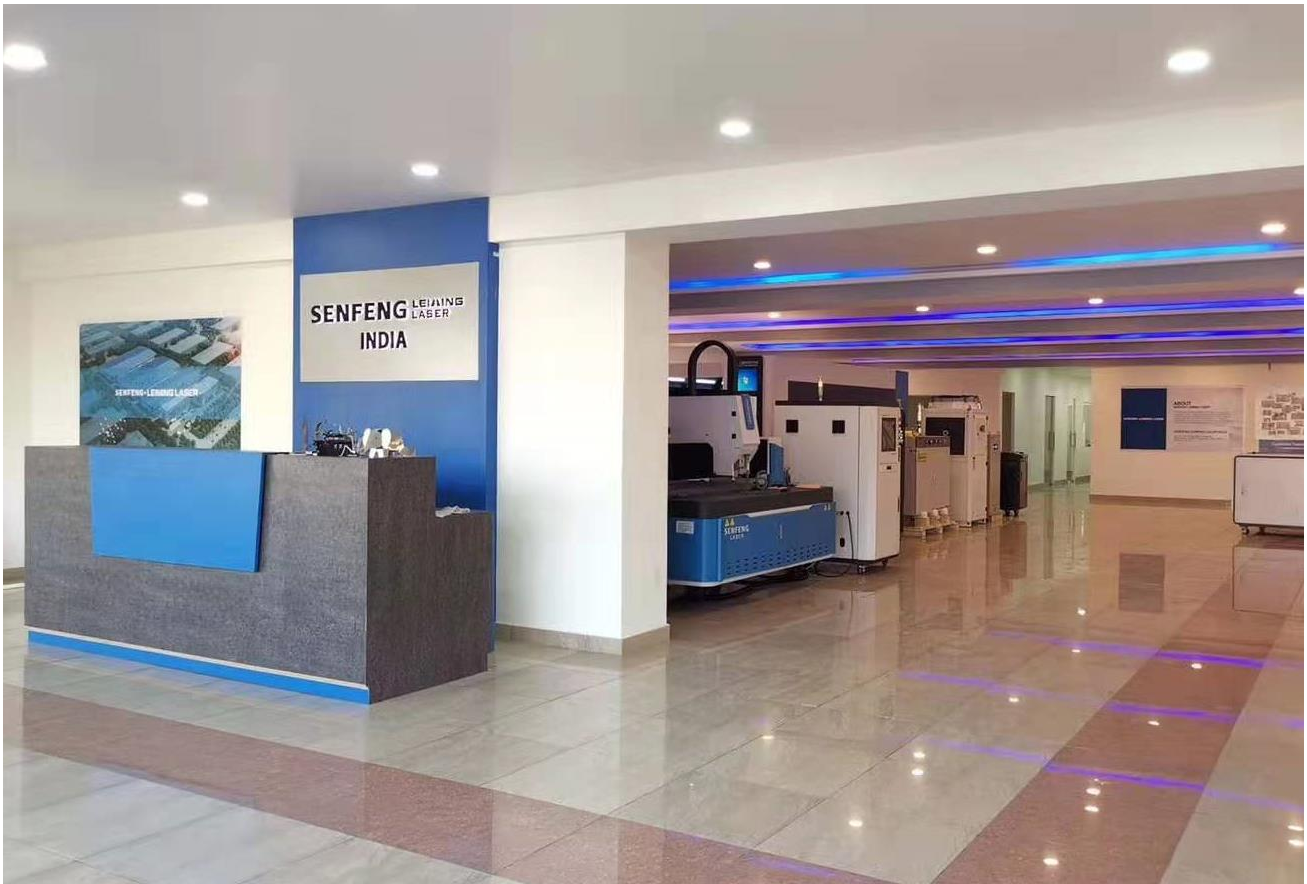


SENFENG LEIMING
LASER

Germany Branch



India Branch





Other Products

3D Robot



3D Robot Laser Automation System



3D Laser Cutting and Welding

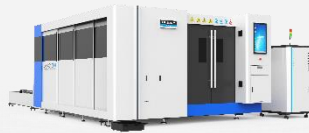


Arm 3D Robot

Plate and Tube Cutting Machine



Tube Laser Cutter



Dual Table Sheet Fiber Laser Cutter
With Safety Cover



Sheet Fiber Laser Cutter

Other Laser Equipment



Automatic Laser Cutting Production Line



Laser Cleaner

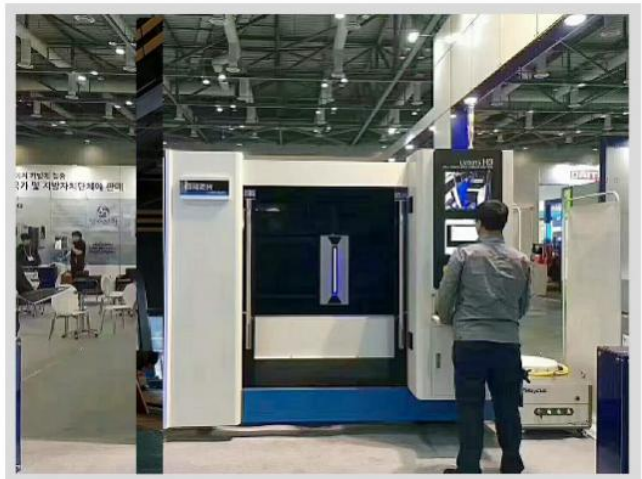
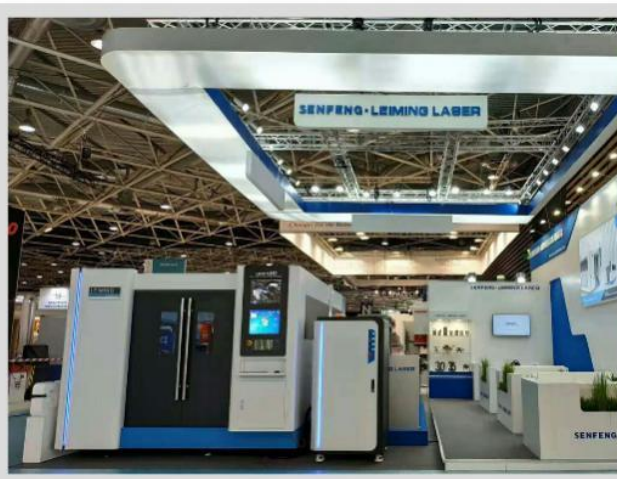
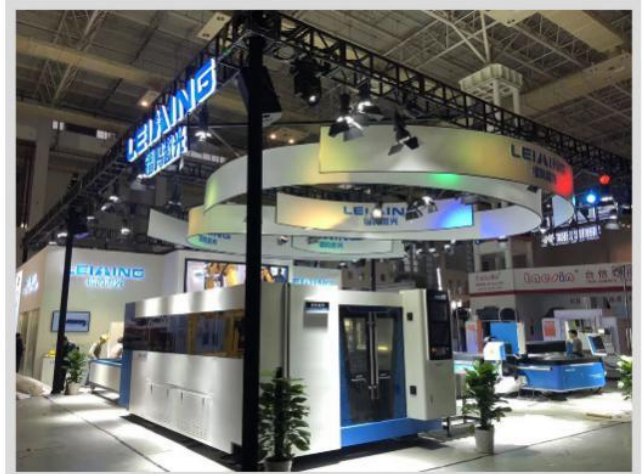
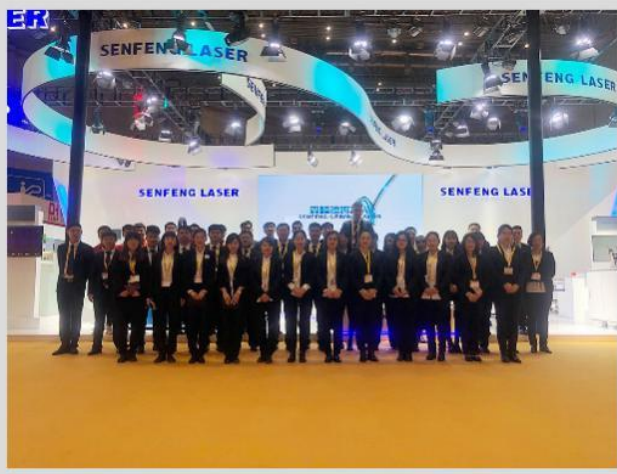
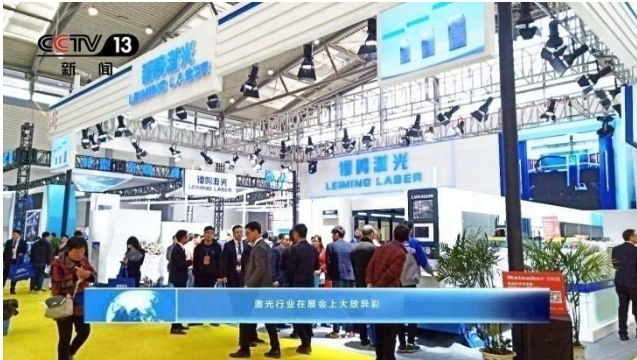


High Precision Laser Cutter



SENFENG LEIMING LASER

Trade shows





SENFENG LEIANG
LASER

Thanks for your interest

ALPHA CNC GROUP PTY LTD

21/2-4 Picrite Close, Pemulwuy NSW 2145

Phone: 02 9683 6117

Web: www.alphacnc.com.au

Felix Yan

Mobile: 0420 206 745

Email: felix_yan@alphacnc.com.au