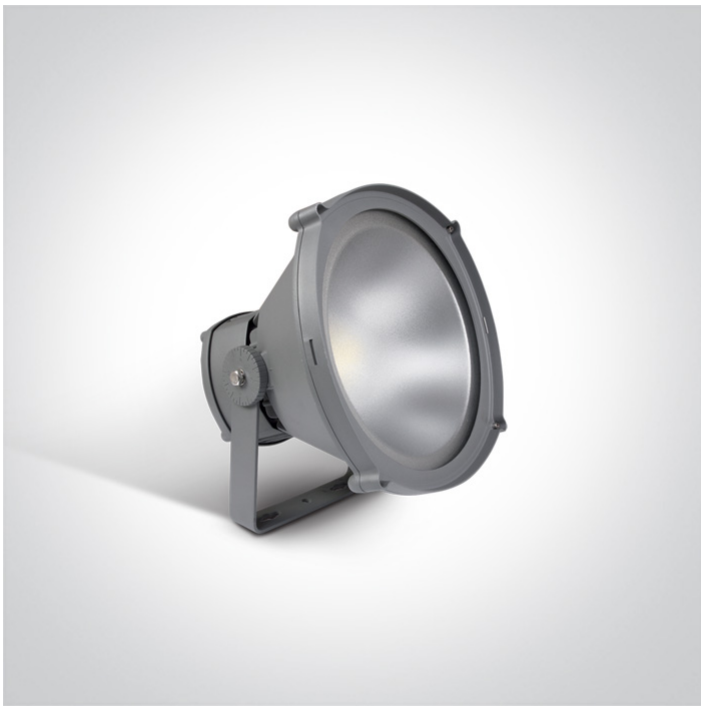


21 Industrial & Floodlights>The COB LED Project Floodlights Die cast

**7050C/G/C**



50W COB LED Project floodlight.

IP65 rated for outdoor use.

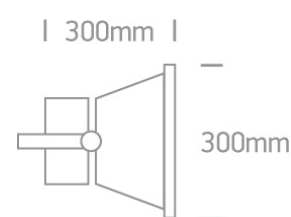
Complies with standard EN60598-1 and any other specific standards.



Downloads



Dimensions



Physical Specification



Item Group	21 Industrial & Floodlights
Family	The COB LED Project Floodlights Die cast
Order Code	7050C/G/C
Colour	Grey
Material	Die Cast
Diffuser Material	Glass
Shape	Rectangular
Length	300mm
Width	300mm
Surface Ceiling	Yes
Surface Wall	Yes
Surface Floor/Ground	Yes

Outdoor
Adjustable

Yes
1 Direction

## Electrical Characteristics

Gear
Fitting + Driver
Input Voltage
50 Hz
Safety Class
Power(Watts)
IP Rating
Light Source
Dimmable
Cable Length
F Mark

Built In
100-240V
Yes

50W
IP65
LED built in
No
100cm


## Fitting

Input Type
IP Rating


Constant Current
IP65

## Gear

Input Voltage
50 Hz
60 Hz
Power(Watts)
Power Factor
Constant Current

100-240V
Yes
Yes
50W
0,9
Yes

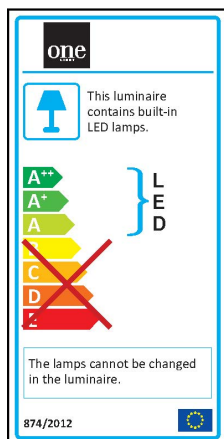
## Illumination Data

Colour Temperature	4000K
Lumen Output	4390lm
Light Efficiency	87.8lm/W
CRI	70
Beam Angle	80°
Illumination Diagram	

## Packing Info

Box Length	33,6cm
Box Width	33,6cm
Box Height	31,3cm
Box Weight	5,6Kg
Pcs/Carton	2
Barcode	5291889037118
HS Code	9405409900

## Energy Label



Warranty

2 Years

Weee Directive

Yes

switch to  
**one light!**

one  
LIGHT

