

AGILA

7470PJC150P50

EAN 4031582349696

Swivel castor, housing made of Stainless Steel, double ball bearing swivel head, wheel axle with nut, plate fitting. Wheel centre made of Polypropylene, Tread: TENTEprene (thermoplastic rubber), grey non-marking, with threadguards, precision ball bearing, stainless



BETTER MOBILITY. BETTER LIFE.



Picture may differ from original product

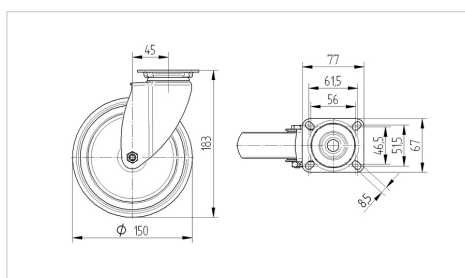
Technical Data

| | |
|------------------------|------------------------|
| Wheel diameter | 150 mm |
| Width of Tread | 32 mm |
| Size of Plate | 77 x 67 mm |
| Plate hole centres | 61,5/56 x 51,5/46,5 mm |
| Plate hole | 8,5 mm |
| Offset | 45 mm |
| Swivel Interference | 240 mm |
| Overall height | 183 mm |
| Temperature | - 20 / + 60 °C |
| Standard | EN 12530 |
| Weight | 0.837 kg |
| Swivel Radius | 120 mm |
| Hardness of tread | Shore A 87 |
| Load capacity | 100 kg |
| Load capacity (static) | 200 kg |

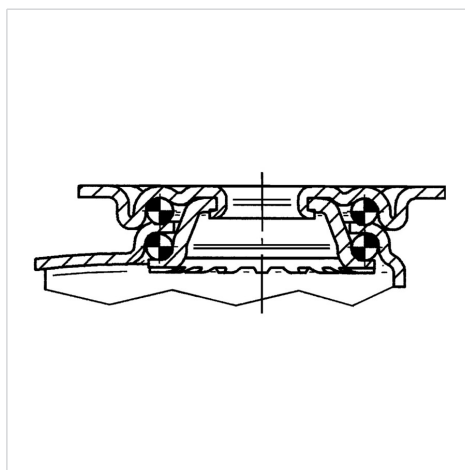
Advantages at a glance

| | |
|----------------------|-----------|
| Roll performance | ● ● ● ○ ○ |
| Movement noise | ● ● ● ○ ○ |
| Attrition | ● ● ● ○ ○ |
| Corrosion resistance | ● ● ● ● ● |

Dimensions



Structure & Mounting



AGILA

7470PJC150P50

EAN 4031582349696



BETTER MOBILITY. BETTER LIFE.

Structure & Mounting

