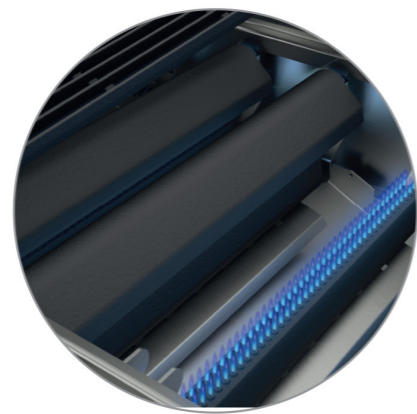


Barbecue

- Gas grill with 4 cooking zones.
- Worktop of 20/10 thickness.
- Heat provided by 8 efficient cast-iron burners in a double row arrangement, spaced 22.2 mm apart, protected by cast-iron radiating elements guaranteeing optimum heat retention. Heat controlled by safety valve with thermocouple.
- The 4 cooking zones provide highly-flexible temperature control and perfect cooking at different temperatures simultaneously.
- Inclined cast-iron grill, reversible for fatty meats or fish, features juice collector for cooking fats.
- 1080 x 535 mm cooking surface.
- Removable drip trays.



Cast-iron grill plate for meat and fish.



High-power burners with castiron cover.



Large channel for collecting cooking fats



3 Removable drip trays