

## SCREW JACKS

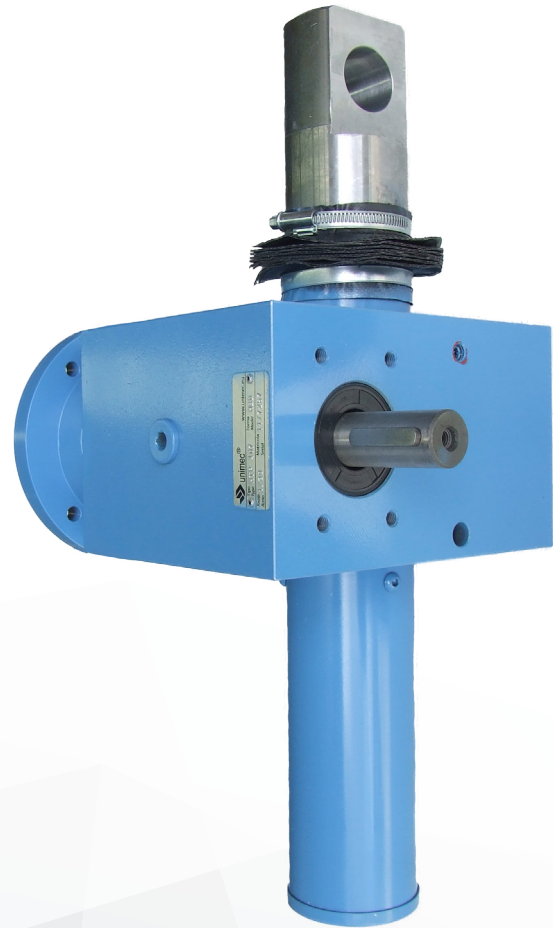
Their high reliability, practically, maintenance free designs and simplicity of use render mechanical worm gear screw jacks ideal for the most demanding and variable working conditions.

They can be used for hoisting, pulling, lining up or moving within all possible applications.

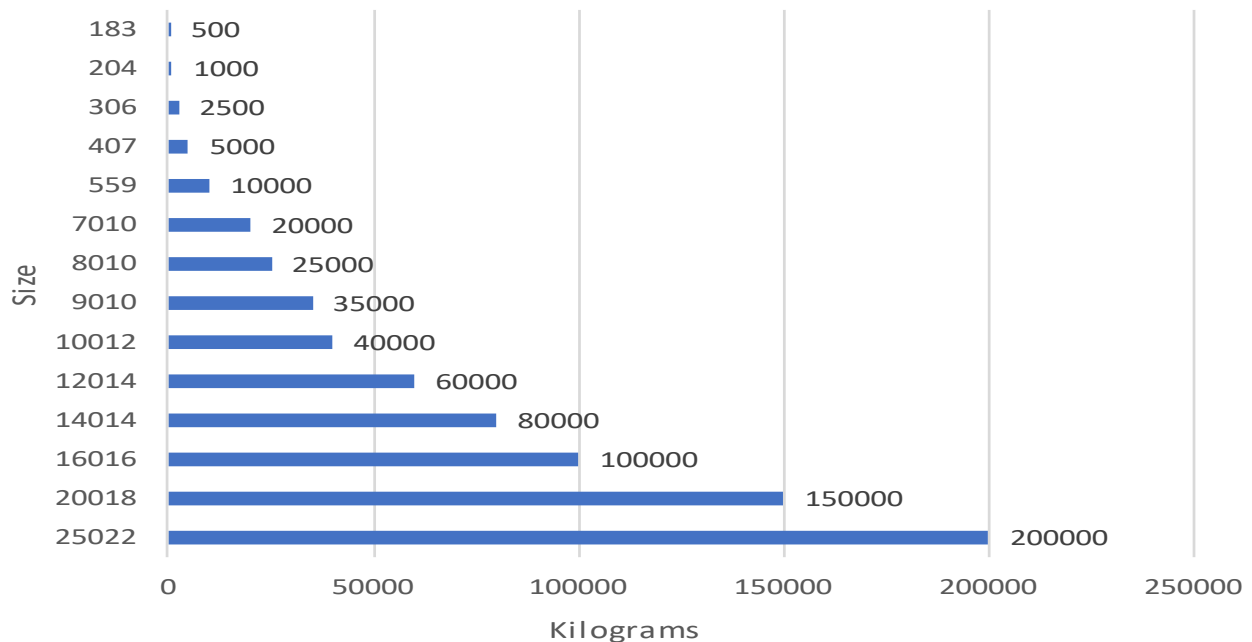
As well as being used individually, they can be mounted in groups to favour a perfect synchronism even under unbalanced loads.

Their particular construction makes them absolutely non-back-driving and therefore once the input shaft is stopped they remain in position without the help of brakes etc. even when the load is applied to the spindle.

Having a completely machined body makes all sorts of mountings possible. Applications with electric, pneumatic and hydraulic drive motors are within our range thanks to the availability of hollow shafts and flanges as well as solid inputs.

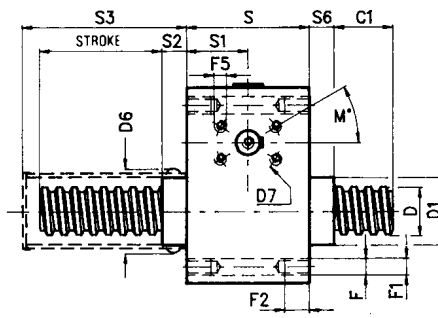
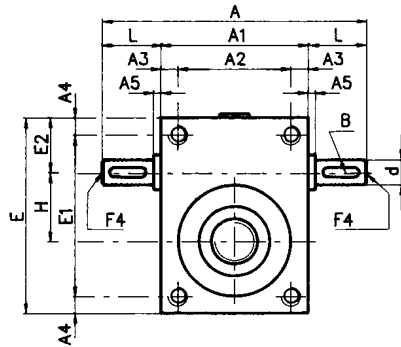


Maximum Capacity

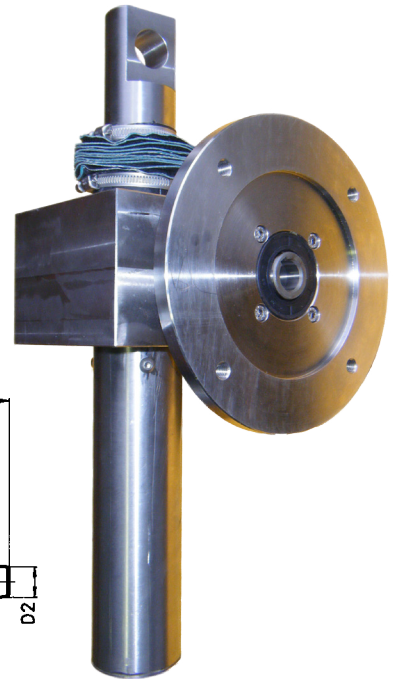
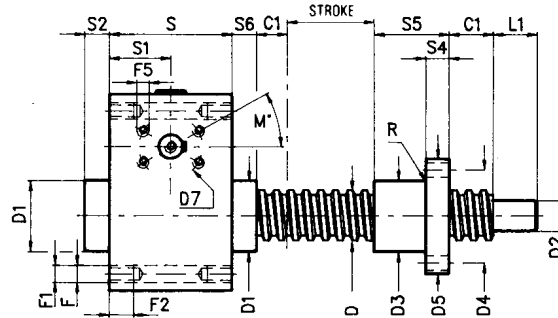
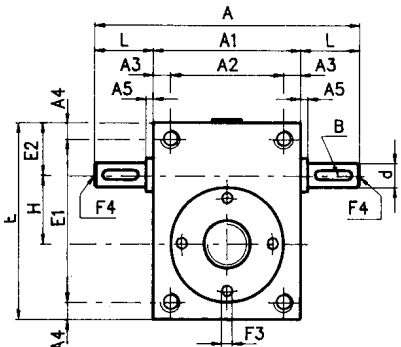


# Screw Jacks

TP



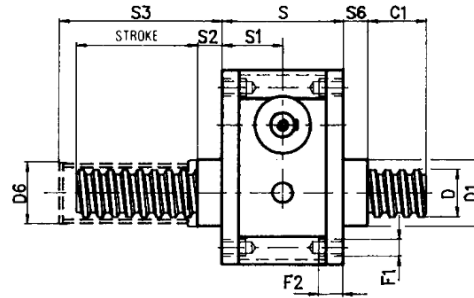
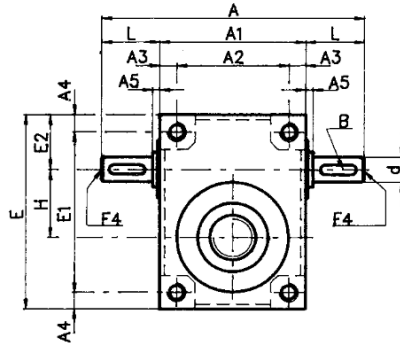
TPR



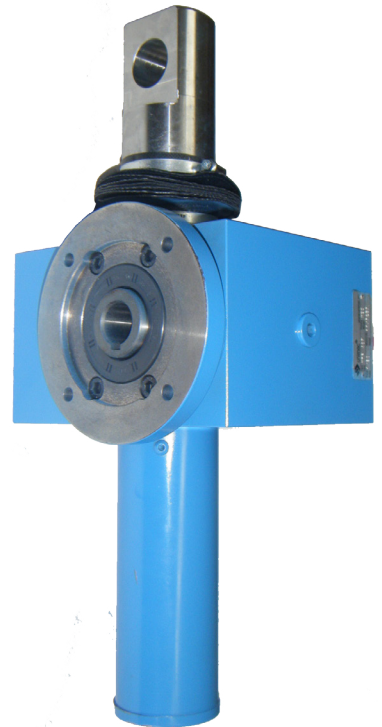
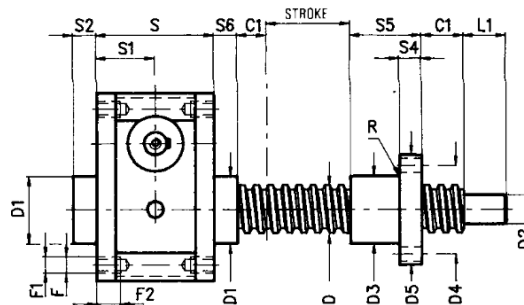
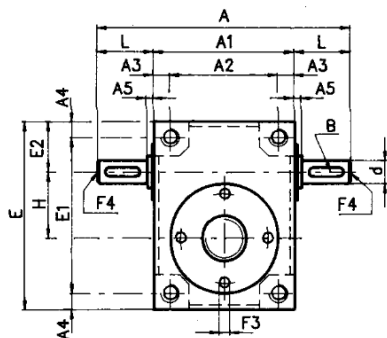
TYPE	183	204	306	407	559	7010	8010	9010
A	118	150	206	270	270	350	350	390
A1	70	100	126	160	170	230	230	250
A2	56	80	102	130	134	180	180	200
A3	7	10	12	15	18	25	25	25
A4	7	7,5	12	15	18	25	25	25
A5	4	—	—	—	—	—	—	—
B	3×3×15	4×4×20	6×6×30	8×7×40	8×7×40	8×7×50	8×7×50	12×8×60
C1	15	15	20	25	25	25	25	40
d ∅ j6	9	12	20	25	25	30	30	40
D	18x3	20x4	30x6	40x7	55x9	70x10	80x10	100x12
D1 ∅ <sup>-0,2</sup> <sub>-0,3</sub>	30	44	60	69	90	120	120	150
D2 ∅k6	12	15	20	25	40	55	60	70
D3 ∅	26	32	46	60	76	100	110	150
D4 ∅	40	45	64	78	100	140	150	190
D5 ∅	54	60	80	96	130	180	190	230
D6 ∅	38	52	71	80	104	134	134	169
D7 ∅	—	60	68	86	86	74	74	100
E	94	100	155	195	211	280	280	320
E1	80	85	131	165	175	230	230	270
E2	29	32,5	45	50	63	75	75	85
F ∅	9	9	11	13	—	—	—	—
F1	—	—	—	—	M20	M30	M30	M30
F2	—	—	—	—	30	45	45	45
F3 (N. 4 holes)	7	7	7	9	13	18	18	20
F4	—	M5x10	M6x12	M8x15	M8x15	M10x18	M10x18	M10x18
F5 (n. holes)	—	M5x12 (4)	M6x14 (4)	M8x16 (4)	M8x16 (4)	M8x15 (6)	M8x15 (6)	M10x18 (4)
H	30	30	50	70	70	90	90	110
L	24	25	40	55	50	60	60	70
L1	14	20	25	30	45	70	75	80
M°	—	30	45	30	30	30	30	45
R (radius)	3	3	3	3	3	3	3	3
S	50	70	90	120	150	176	176	230
S1	25	35	45	60	75	88	88	115
S2	10	20	25	35	40	40	40	50
S3 + stroke	35	50	60	75	80	80	80	100
S4	12	12	14	16	20	30	30	45
S5	35	45	48	75	100	105	110	135
S6	15	20	25	35	40	40	40	50

## SCREW JACK EXTRA HEAVY DUTY

TP

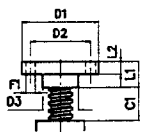
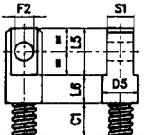
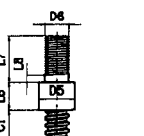
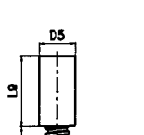
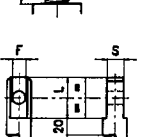
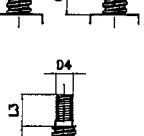
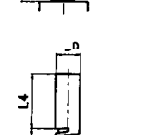
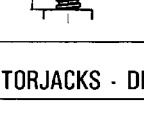


TPR

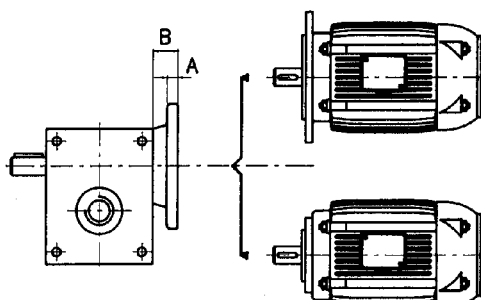


TYPE	10012	12014	14014	16016
A	490	490	780	780
A1	320	320	500	500
A2	230	230	360	360
A3	45	45	70	70
A4	25	25	40	40
A5	5	5	10	10
B	16x10x70	16x10x70	20x12x110	20x12x110
C1	40	40	50	50
d Ø j6	55	55	70	70
D	100x12	120x14	140x14	160x16
D1 Ø <sup>-0,2</sup> <sub>-0,3</sub>	210	210	300	300
D2 Ø k6	70	90	120	130
D3 Ø	150	180	210	210
D4 Ø	190	235	270	270
D5 Ø	230	280	320	320
D6 Ø	150	150	210	210
E	405	405	590	590
E1	355	355	510	510
E2	105	105	160	160
F1	M30	M30	M56	M56
F2	45	45	110	110
F3 (n. holes)	20 (4)	25 (4)	25 (6)	25 (6)
F4	M12x25	M12x25	M14x30	M14x30
H	140	140	200	200
L	85	85	140	140
L1	80	85	120	120
R	3	3	4	4
S	270	270	370	370
S1	135	135	185	185
S2	50	50	60	60
S3 + stroke	100	100	100	100
S4	45	55	80	80
S5	135	160	250	250
S6	50	50	60	60

## SCREW JACK END FITTINGS

	TYPE	183	204	306	407	559	7010	8010	9010	10012	12014	14014	16016
TF	 C1	15	15	20	25	25	25	25	40	40	40	50	50
	DØ	—	20	30	40	55	70	80	100	100	120	140	160
	D1Ø	54	80	90	110	150	200	220	280	280	300	380	380
TOR	 D2 Ø	40	60	67	85	117	155	170	220	220	240	300	300
	D3 Ø	26	39	46	60	85	105	120	150	150	170	210	210
	D4 Ø	12x1	14x2	20x2,5	30x3,5	36x4	56x5,5	64x6	70x6	70x6	90x6	110x6	125x6
TMR	 D5 Ø	—	38	48	68	88	108	118	138	138	168	216	216
	D6	—	20x1,5	30x2	39x3	56x4	72x4	80x4	100x4	100x4	120x4	150x4	150x4
	FØ	—	10	14	22	30	40	45	—	—	—	—	—
TLR	 F1 (n. fori)	7 (4)	11 (4)	11 (4)	13 (4)	17 (4)	25 (4)	25 (4)	29 (6)	29 (6)	32 (6)	52 (6)	52 (6)
	F2Ø	—	20	25	35	50	60	65	80	80	100	140	140
	L	—	50	60	80	80	100	110	—	—	—	—	—
TO	 L1	14	21	23	30	50	60	60	70	70	80	100	100
	L2	8	8	10	15	20	30	30	40	40	50	60	60
	L3	20	20	30	30	48	58	58	70	70	90	110	125
TM	 L4	70	70	80	100	100	120	130	140	140	150	150	150
	L5	—	40	50	70	100	120	130	160	160	200	280	280
	L6	—	35	45	55	80	90	95	120	120	150	160	180
TL	 L7	—	40	50	70	90	105	110	120	120	130	170	180
	L8	—	10	10	10	20	25	25	30	30	30	35	35
	L9	—	75	95	135	180	210	225	280	280	350	380	380
TL	 S	—	14	20	30	42	55	65	—	—	—	—	—
	S1	—	25	30	40	60	75	80	100	100	120	155	155

## MOTORJACKS - DIFFERENT TYPES AND SIZES



SCREW JACK			Electric motor serial UNEL MEC construction form B5 or B14																	
TYPE	A	B	56		63		71		80		90		100		112		132			
			B5	B14	B5	B14	B5	B14	B5	B14	B5	B14	B5	B14	B5	B14	B5	B14		
204	10	30	★		★		★	★												
306	13	33			★		★		★	★										
407	15	40					★		★	★	★	★	★	★	★	★				
559	15	40					★		★	★	★	★	★	★	★	★				
7010	17	55											★	★	★	★	★	★		
8010	17	55											★	★	★	★	★	★		