

ICONA
DESIGNED WITH YOU IN MIND



FOOTCARE

2020

CONTACTS

ICONA

**12/37 Keilor Park Drive
Keilor Park Vic 3042**

Phone: **1300 442 662**

Email: **sales@icona.net.au**



www.icona.net.au



ELOI Podiatry Instruments

For nearly a hundred years now, Eloi, heir to a strongly-rooted tradition in the Jewellery sector

(Saint Eloi, patron saint of Goldsmiths), has been drawing on its historical experience to bring

you products of outstanding quality. They began developing foot care instruments in the 1990s, and

have continuously strived to improve their competitive offer through their dedicated brands and

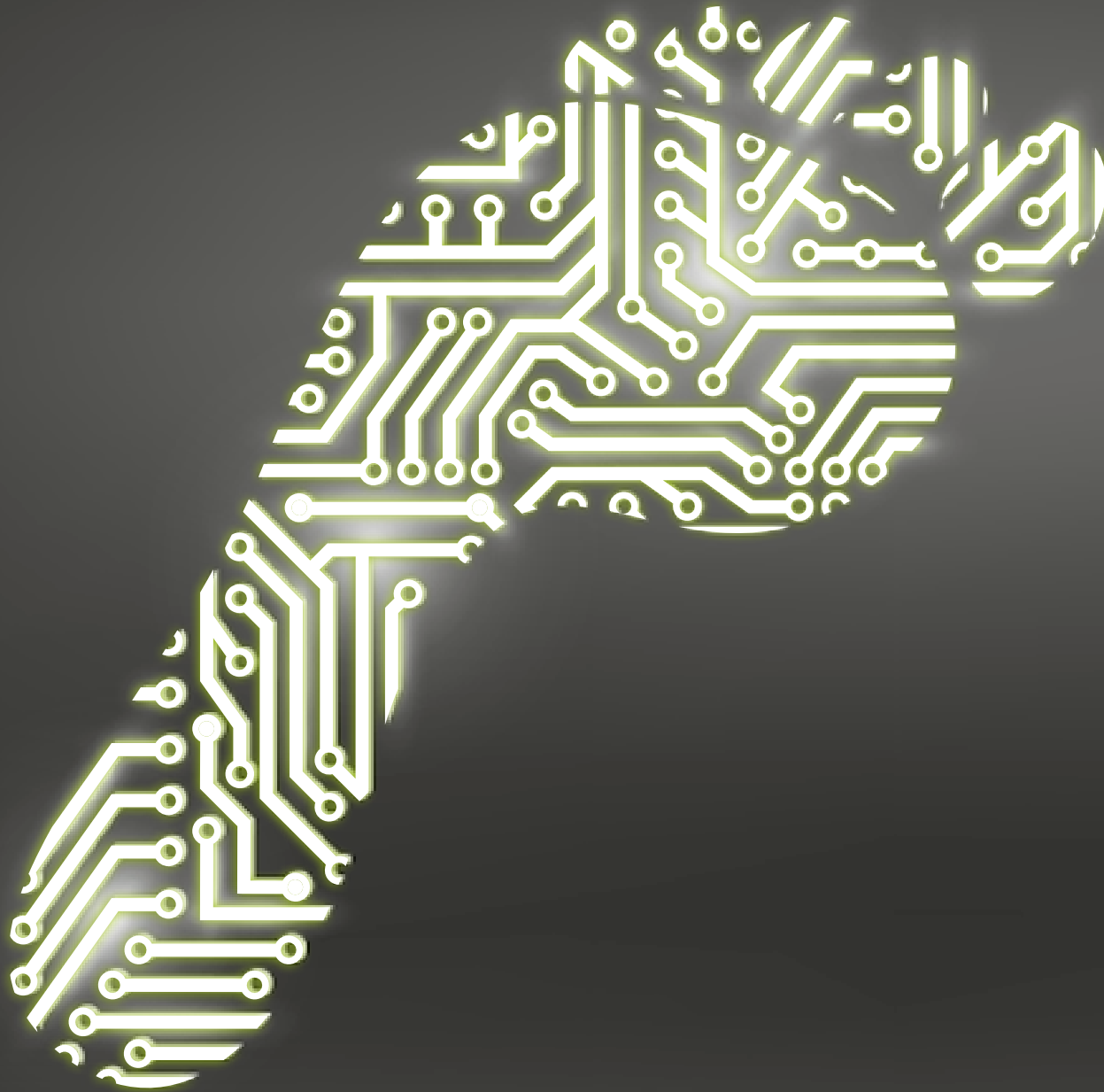
specialty products, all of which meet the strictest professional requirements.

In 2012, the Podorape company, which manufactures the world's finest foot files, 100% made in France, merged with Eloi thus extending the range of the instrumentation on offer. This allowed Eloi to obtain ISO 9001 certification followed by ISO 13485 for medical devices.

The Eloi range offers the latest, ground-breaking innovations and together with ICONA and their range of sterilisation equipment, exam chairs and couches provide a complete solution for your practice.

*This document contains medical devices that meet current norms and provisions:
Directive 2007/47/EC amending
Directive 93/42/EEC – ELOI PERNET is
certified to ISO 9001 / ISO 13485 /
Certification EC120.*





INSTRUMENTS



ELITECH® clippers are class I medical devices conform to Directive 2007/47/EC amending Directive 93/42/EEC.



Patented single spring

With positioning hole, ensuring unique grip and flexibility (sterilise with the clippers open to take the pressure off the spring)

Laser etching for traceability

Each pair of clippers has a batch number that guarantees end-to-end monitoring of the manufacturing process



Manual, single sharpening high-precision for a long-lasting razor-sharp edge

Patented tapered rivet

For permanent hinge adjustment and perfect alignment of the 2 jaws

Surgical quality French steel

Can be sharpened repeatedly



NAIL CLIPPERS - Straight cuts



13 cm - Ref. 08910X

14 cm - Ref. 08914X

Tapered jaws, straight cut 20 mm

- Straight, clean, precise cutting of all nail types
- Tapered jaws for improved visibility during cutting
- Powerful, high-precision gesture

NAIL CLIPPERS - Straight cuts



13 cm - Ref. **08913XL**
14 cm - Ref. **08914XL**

**Flat jaws
20 mm**

- Shape studied for cutting thick ingrown toenails
- High-quality sharp cutting edge ensures precise cutting and easy removal of spurs



13 cm - Ref. **08913XC**
14 cm - Ref. **08914XC**

**Flat jaws
15 mm**

- Shape studied for cutting thick ingrown toenails
- High-quality sharp cutting edge ensures precise cutting and easy removal of spurs



13 cm - Ref. **08910XE**
14 cm - Ref. **08914XE**

**Highly tapered jaws,
straight cut
20 mm**

- Straight, clean, precise cutting of nails of thin to normal thickness
- Highly tapered jaws make it easier to reach ingrown toenails



13 cm - Ref. **08912X**
14 cm - Ref. **08911X**

Slightly concave jaws

- Shape studied for cutting thick ingrown, hard or mycosed nails
- Curved cutting edge to limit the amount of movements needed when cutting

NAIL CLIPPERS



13 cm - Ref. **08915X**
14 cm - Ref. **08918X**

Short, slanting jaws
15 mm

- Shape studied for cutting thick ingrown, hard or mycosed nails
- Slanting cutting edge for cutting in one smooth movement



13 cm - Ref. **08917X**
14 cm - Ref. **08916X**

Long, slanting jaws
20 mm

- Shape studied for cutting thick ingrown, hard or mycosed nails
- Slanting cutting edge for cutting in one smooth movement

DiaPROTECH® clippers are class I medical devices conform to Directive 2007/47/EC amending Directive 93/42/EEC.

CE 120

Manual, single sharpening
Patented tapered rivet
Patented single spring
Surgical quality French steel
Laser etching for traceability



With the same baseline characteristics as the ELITECH range, the DiaPROTECH range enables you to work safely due to its:

Atraumatic jaws

Smooth, rounded lines
A specific shape that maximises cutting safety, particularly with diabetic patients.

This product has been designed and developed jointly with our consultant podiatrists, to meet your needs and the physician's expectations as closely as possible.



13 cm - Ref. **DIA910X**

14 cm - Ref. **DIA914X**

Tapered jaws, straight cut

- Straight, clean, precise cutting of all nail types
- Tapered jaws for improved visibility during cutting
- Powerful, high-precision gesture
- 2 rounded jaws for perfectly safe, trouble-free use



NAIL CLIPPERS



13 cm - Ref. **DIA913XG**
14 cm - Ref. **DIA914XG**

Long, flat jaws left-cutting

- Shape studied for cutting thick ingrown nails
- High-quality sharp cutting edge ensures precise cutting and easy removal of spurs
- 2 asymmetrical jaws:
 - Longer, rounded left-hand jaw for pushing the skin back with no risk of injuring the patient
 - Thin, pointed right-hand jaws, for accurate cutting of splinters
- Easy to identify by the etched "G" on the back of the tapered rivet



13 cm - Ref. **DIA913XD**
14 cm - Ref. **DIA914XD**

Long, flat jaws right-cutting

- Shape studied for cutting thick ingrown nails
- High-quality sharp cutting edge ensures precise cutting and easy removal of spurs
- 2 asymmetrical jaws:
 - Longer, rounded right-hand jaw for pushing the skin back with no risk of injuring the patient
 - Thin, pointed left-hand jaws, for accurate cutting of splinters
- Easy to identify by the etched "D" on the back of the tapered rivet

AKORI®

by Eloi

AKORI® clippers are class I medical devices conform to Directive 2007/47/EC amending Directive 93/42/EEC.

CE 120

Patented tapered rivet

For permanent hinge adjustment and perfect alignment of the 2 jaws

Removable silicone spring

That provides flexibility and ease of use.
Just press to assemble and disassemble (remove the spring during sterilization)

Manual, single sharpening
high-precision
for a long-lasting razor-sharp edge

Laser etching for traceability

Each pair of clippers has a batch number that guarantees end-to-end monitoring of the manufacturing process

Surgical quality French steel

Can be sharpened repeatedly



WARRANTY



AUTOCLAVABLE



NAIL CLIPPERS



13 cm

Ref. AKORIVI



Tapered jaws, straight cut

- Straight, clean, precise cutting of all nail types
- Tapered jaws for improved visibility during cutting
- Powerful, high-precision gesture

Products shown in actual size

NAIL CLIPPERS



13 cm
Ref. **AKORIVE**

- Flat jaws
20 mm**
- Shape studied for cutting thick ingrown toenails
 - High-quality sharp cutting edge ensures precise cutting and easy removal of spurs



13 cm
Ref. **AKORIJA**

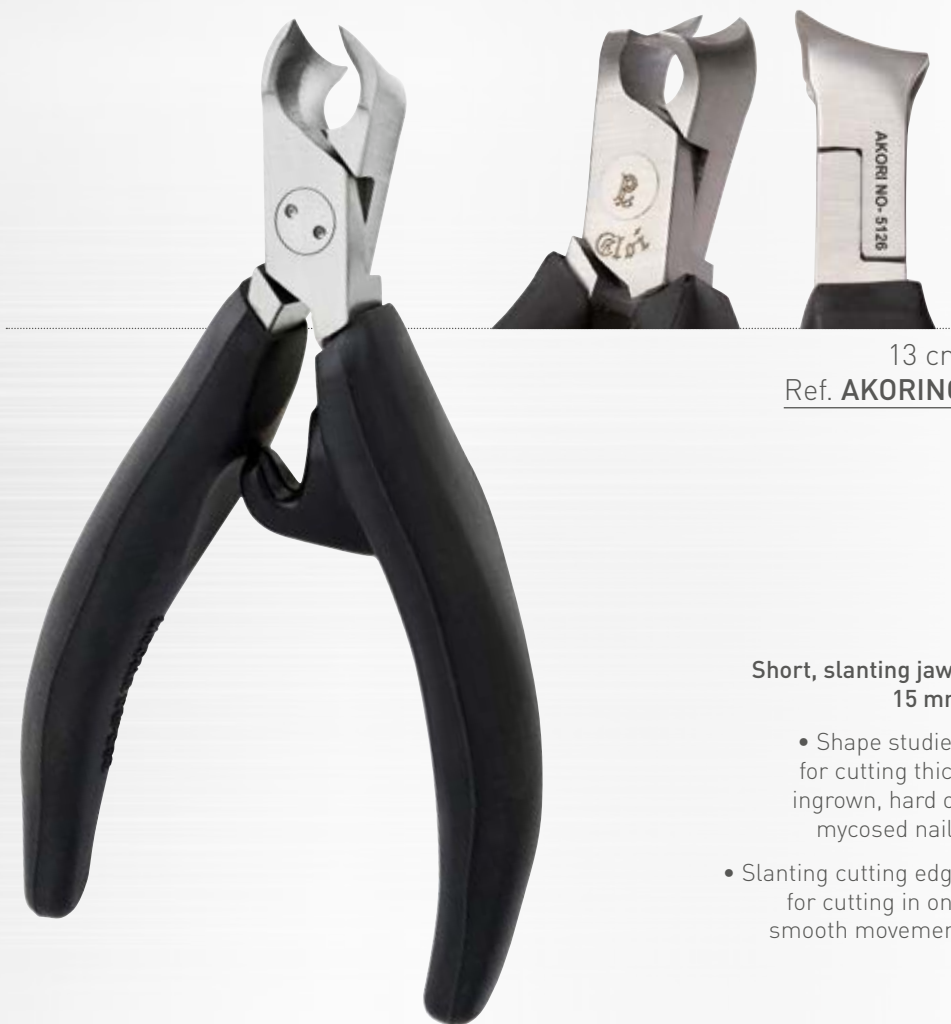
- Flat jaws
15 mm**
- Shape studied for cutting thick ingrown toenails
 - High-quality sharp cutting edge ensures precise cutting and easy removal of spurs





13 cm
Ref. **AKORIFU**

- Highly tapered jaws,
straight cut**
- Straight, clean, precise cutting of brittle to normal nails
 - Highly tapered jaws make it easier to reach ingrown nails



13 cm
Ref. **AKORINO**

- Short, slanting jaws
15 mm**
- Shape studied for cutting thick ingrown, hard or mycosed nails
 - Slanting cutting edge for cutting in one smooth movement

ELIbasic®

by Eloi

ELIbasic®
clippers are class I medical
devices
conform to Directive
2007/47/EC amending
Directive

CE 93/42/EEC.
120

Surgical quality steel
Can be sharpened
repeatedly

**Manual, single
sharpening**
high-precision
for a long-lasting
razor-sharp edge

Straight cut
For cutting thin or
thick nails,
including
ingrown toenails

**Single rotating
spring**

**Laser etching
for traceability**
Each pair of clippers has a
batch number
inside the handle, that
guarantees
end-to-end monitoring of
the manufacturing process



WARRANTY



AUTOCLAVABLE

NAIL CLIPPERS



13 cm
Ref. **08921X**

Flat jaws, straight cut

- Standard size
(exists in 4 different
sizes to fit your hand size
or treatment type)

NAIL CLIPPERS



15 cm
Ref. **08922X**

Flat jaws
straight cut



11.5 cm
Ref. **08923X**

Flat jaws
straight cut



10 cm
Ref. **08920X**

Flat jaws
straight cut

- Special children's version



Nail shears



4 hinge positions
Slightly concave
cut



Slanting jaws
Single spring

NAIL CLIPPERS



14 cm
Ref. **08556X**

Slightly concave
jaws



13 cm
Ref. **08557X**

Tapered jaws
Straight cut



13 cm
Ref. **08562X**

Tapered, concave
jaws



12 cm - With clasp

**Engaged arm
hinge**

- Cutting edge that enables clean, precise cutting of cuticles



12 cm - Without clasp

**Engaged arm
hinge**

- Cutting edge that enables clean, precise cutting of cuticles



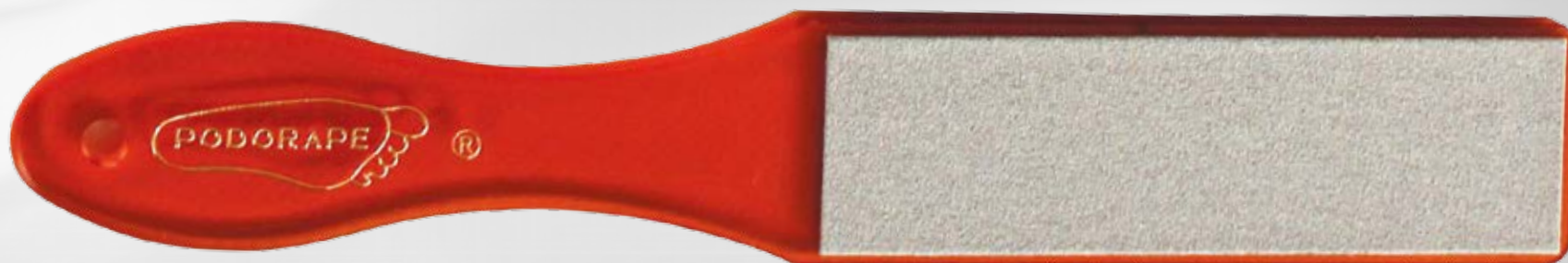
9 cm with ring
Without clasp

**Engaged arm
hinge**

- Cutting edge that enables clean, precise cutting of cuticles

FOOT FILES

- The perfect file for heels and calluses. Can be used dry, the FOOT FILE is washable.
- Double-sided abrasive file (fine grain and standard grain) - 27 cm

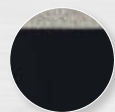


16 COLOURWAYS

Opaque



PR01B0



PR01N0

Spangled



PR06VC



PR06T



PR06F

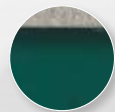


PR06V



PR06B

Transluscent



PR01VF



PR01VC



PR01O



PR01F



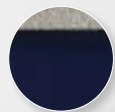
PR01RS



PR01BT



PR01BC



PR01BF



PR01V

FOOT FILE DISPLAY STAND - 12 FOOT FILES

Transparent
assorted colours
Ref. **PRCA012**

Transparent
spangled
assorted colours
Ref. **PRCA012P**

Transparent
white
Ref. **PLBL012**



One display
stand offered
for purchases
of 12 foot files

DISPOSABLE FOOT FILE - STERILIZABLE & ABRASIVE



AUTOCLAVABLE

Autoclavable stainless steel abrasive pad holder handle - 21.5 cm - Ref. **RA001**



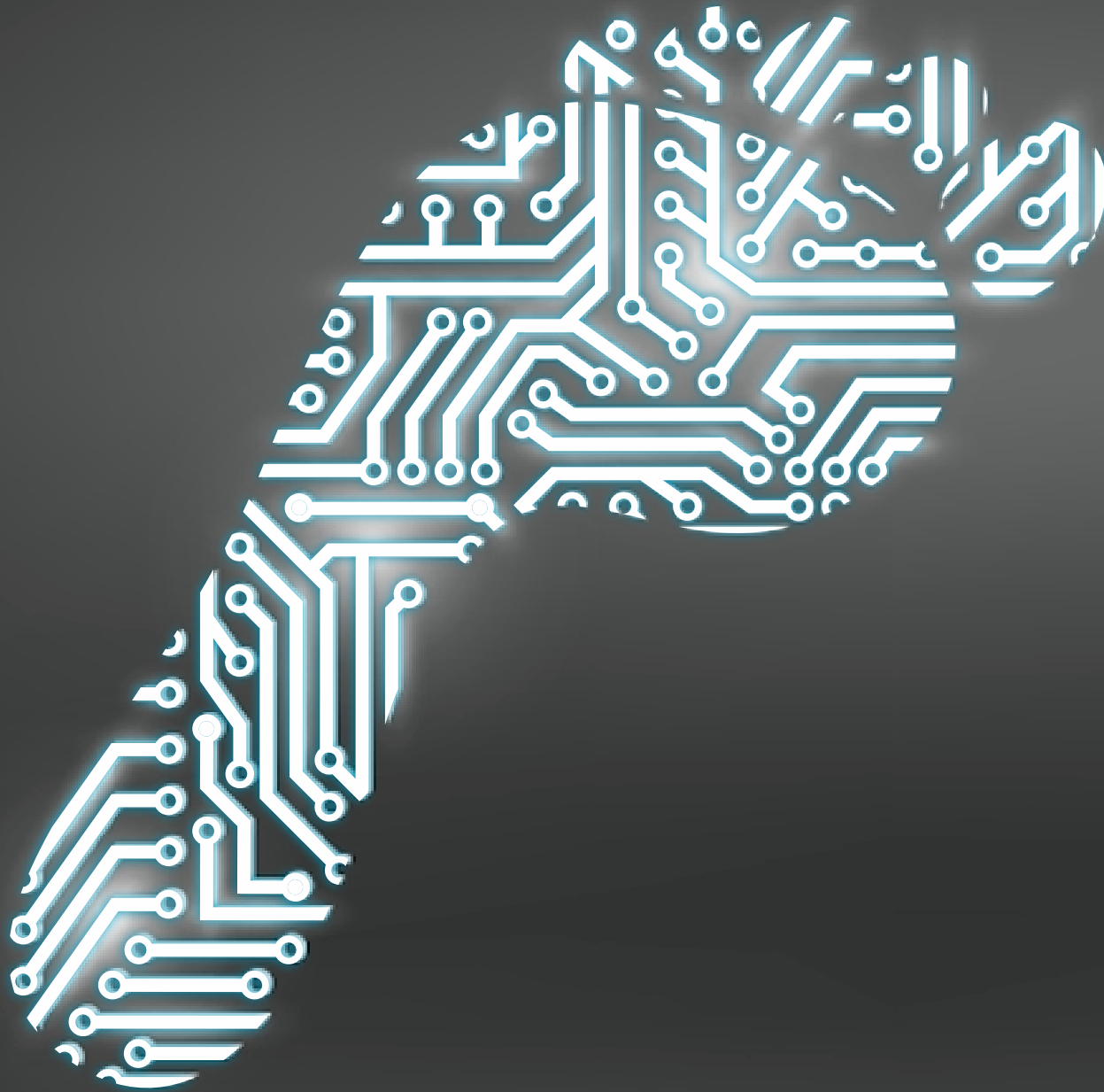
Easy to fit and remove



Packet of 50 fine-grained self-adhesive abrasive pads
9.5 cm x 2.3 cm
Ref. **RA003**



Packet of 50 standard-grained self-adhesive abrasive pads
9.5 cm to 2.3 cm
Ref. **RA002**



STERILIZATION

Complete instrument processing from **ICONA**

Your one stop shop for all your instrument processing solutions



DATA PROCESSING

Infection control compliant
keyboards



CLEANING

Washing and
disinfection with
traceability



CLEANING

Ultrasonic cleaner with
digital cycle validation



STERILISATION

Sterilisers with integrated
printer and data logger
B & S Class models 6 – 60
litre



TRACEABILITY

Wireless bar code
labelling and cycle
data transfer to
patient files



**Cycle of
reusable devices**

INFECTION CONTROL COMPLIANT KEYBOARDS

Silicone Antibacterial Keyboard and Mouse Wireless Silicone Keyboard and Mouse



- Totally sealed IP68 rated for water and dust
- Great for infection control
- Slightly raised keys to give the traditional keyboard feel
- Spray, disinfect and Wipe
- Plug and Play USB support

ICONA
DESIGNED WITH YOU IN MIND

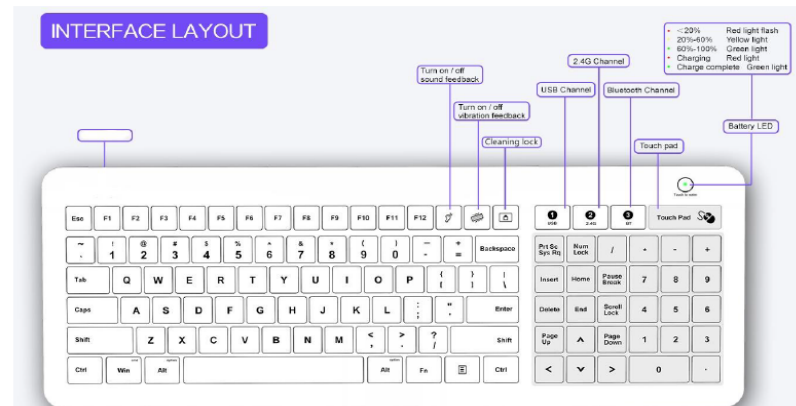


- Totally sealed IP68 rated for water and dust
- Great for infection control – anti bacterial silicone
- Slightly raised keys to give the traditional keyboard feel
- Spray, disinfect and Wipe
- Plug and Play USB support
- Bluetooth and 2.4Ghz connectivity

Healthcare Keyboard



- Quick and reliable disinfection
- 99% of germs removed in one wipe
- Water and dustproof
- Integrated mousepad
- Smooth and gap free glass surface
- Can be used with medical gloves
- Wireless operation
- Supports Window, MAC OSX and Android



Ultrasonic Cleaning Bath

with digital validation



Outstanding ultrasonic cleaning performance with digital validation for professional environments

Supplied with memory card to record:

Cycle time

Cycle number

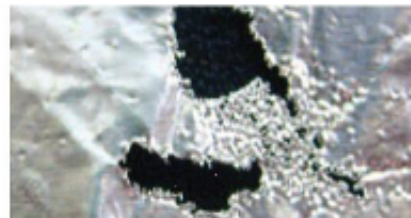
Cycle temperature

Validation of ultrasonic activity

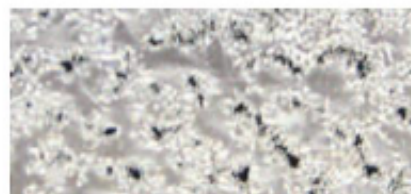
Frequency Leap Technology for improved cleaning performance

4.5litre to 25 litre capacity

Picture A



Picture B



Picture A showing cold and hot spots using fixed frequency

Picture B showing consistent homogenous cavitation activity with Frequency Leap Technology



Midmark B Class Sterilisers



- Motor-operated door closure
- User friendly pre-programmed sterilisation cycles
- Automatic printing of sterilisation cycles
- Data traceability and integrated printer
- Can be connected to a demineraliser or reverse osmosis system
- Reversible tray holder (trays or cassettes)
- USB data logger
- EN13060 compliant
- Available in 6, 18, 23 and 60 litre models



Faro NISEA Premium B Class Sterilisers



- ▶ High definition colour touch screen
- ▶ USB, Ethernet connection. (Wi-Fi optional)
- ▶ User management
- ▶ Cycle printing setup
- ▶ Barcode label printing setup
- ▶ Type B & S cycles
- ▶ Vacuum, Helix, Bowie & Dick tests
- ▶ Manual or auto water fill
- ▶ Emergency front water fill
- ▶ Water conductivity sensor
- ▶ Delayed start
- ▶ Longer drying time option
- ▶ Tray with 5 shelves as standard
- ▶ Tray with 3 shelves for surgical containers (optional)
- ▶ Available in 18 or 23 litre models



Midmark B Class 60 Litre Steriliser

- Motor-operated door closure
- User friendly pre-programmed sterilisation cycles
- Automatic printing of sterilisation cycles
- Data traceability and integrated printer
- Cabinet with integrated ROO system
- Reversible tray holder (trays or cassettes)
- USB data logger
- EN13060 compliant
- 60 litre capacity
- Available in single or 3 phase models



SteriTrust Tracking System

Traceability for your sterilisation cycles

- Quick and simple traceability
- Touchscreen technology
- Wireless connectivity
- Automatic Cloud back up
- Label includes: Practice name, cycle number, steriliser serial number, date and time, batch expiry date, cycle type, cycle result
- Remote log in allows for easy fault diagnosis and service scheduling



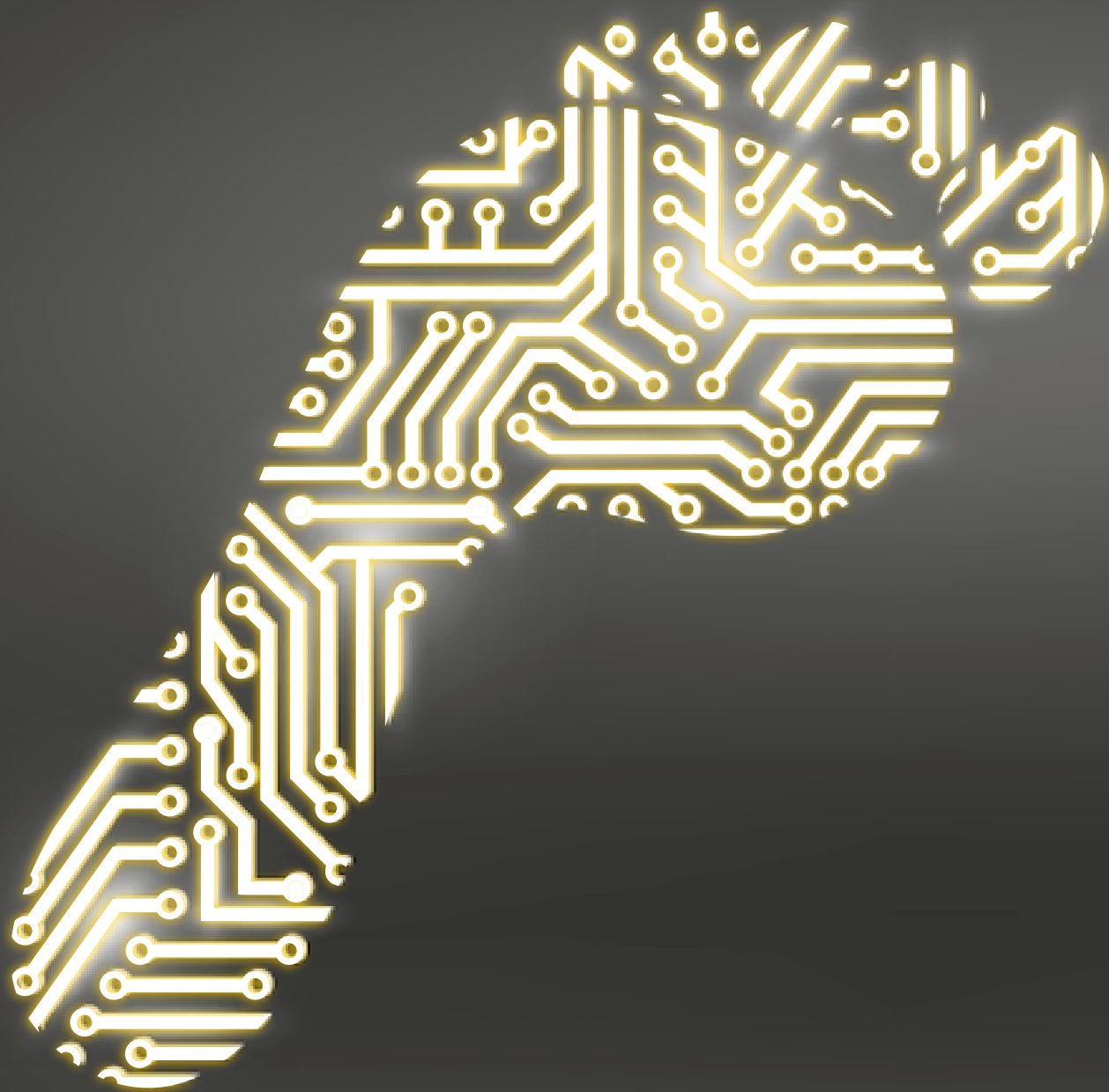
Rotek

RO Water Filtration Systems



- Systems delivering from 180 – 15,000 litres per day
- CE Certified
- 5 stage filtration system
- Customized to suit all water types
- Cost effective
- Protect your valuable sterilisers and washers





EQUIPMENT

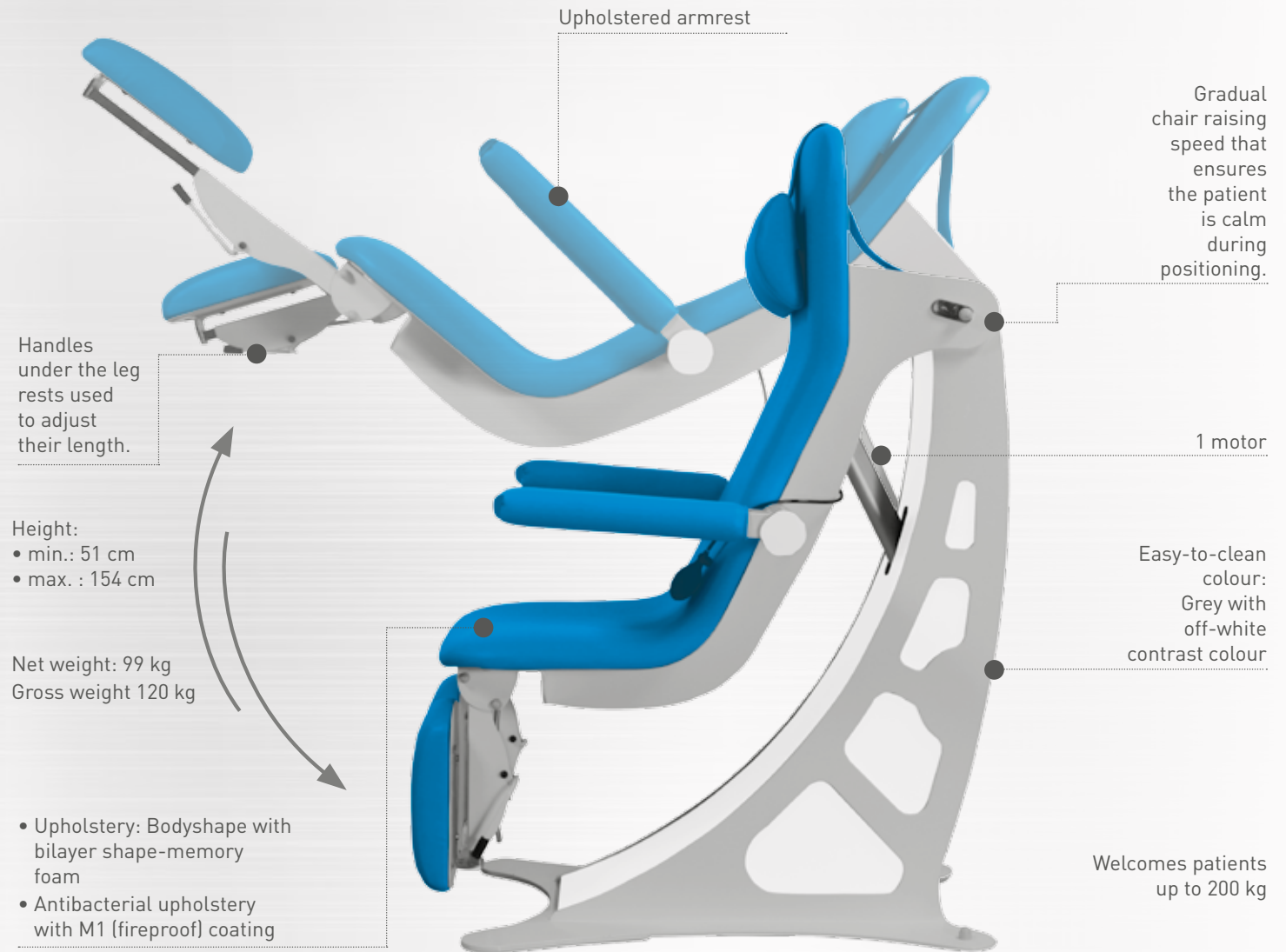
APOLIUM® 

NEW FEATURE: THE NEW STANDARD MADE IN FRANCE



DESIGN

- - Chair shape studied to provide the human body with the most comfortable natural positioning possible, **reducing pressure** at surface contacts as far as is possible;
- - Streamlined design that integrates easily into your work surroundings;
- • Seamless, easy-to-clean upholstery;
- - **Ease of accessibility for persons with limited mobility**, via the front or side of the chair;
- - **Excellent stability in all positions.**



MECHANICAL LEGRESTS
Ref. **FAUT6000**

GAS-SPRING POWERED LEGRESTS ELECTRICALLY ACTUATED LEGRESTS
Ref. **FAUT6001**

Ref. **FAUT6001**



COMFORT

- Bilayer Bodyshape¹ upholstery with **shape memory** that helps the patient to relax;
- **Wireless intuitive foot pedal** that allows smooth movement tailored to the patient's need;
- Standard **Reset** function on all 3 models;
- **Customised programming** of your two favourite positions, single-click access on the electrically-actuated model (FAUT6002);
- **Emergency battery** (optional) and Pan (accessory);
- **Maximum cleaning and maintenance** convenience ensured by easy access to all exposed parts, the use of antibacterial and class-M1 fireproof upholstery, together with the appropriate protective accessories.

USE ERGONOMICS

- Low position up to 51 cm, **high position up to 154 cm**
- **Separate legrests** functional with adjustable depth (+ 20 cm) and spacing;
- First podiatry chair to be made fully **safe with no pinching areas and fitted with a safety sensor**;
- **Ergonomic controls**: chair height controlled via a wireless intuitive foot pedal with simple adjustment of legrests.

¹Bodyshape: The patient is not repositioned when the chair is raised

COLOURWAYS

| | |
|----------------------|---------|
| 85 - SPRUCE | NEW |
| 08 - PERSIMMON | |
| 86 - COLONIAL BLUE | |
| 87 - GLACIER | |
| 88 - EXPRESSO | |
| 32 - BLUE | CLASSIC |
| 93 - COTTAGE | |
| 35 - RED | |
| 34 - YELLOW | |
| 91 - WHITE | |
| 92 - NAVY BLUE | |
| 56 - OBSCURE | |
| 57 - ANTISTATIC | |
| 64 - GRAPE | VITAMIN |
| 66 - CANDY PINK | |
| 63 - CITRON YELLOW | |
| 67 - LAGOON BLUE | |
| 80 - SKY BLUE | COSY |
| 81 - PALE GREEN | |
| 65 - LILAC | |
| 96 - PEWTER | |
| 82 - MEDIUM GREY | |
| 83 - NATURAL | |
| 84 - CHOCOLATE BROWN | |

OPTIONS



Lumbar support system with inflator bulb actuated by the patient
Ref. **FAUT6000-SL**



Emergency battery
Ref. **FAUT6000-B**

ACCESSORIES



Headrest
Ref. **FAUT6000-T**



Crystal protection
Ref. **FAUT6000-P**



Disposable leg protections sold in units of 100
Ref. **FAUT6000-PJ**



Paper-roll holder max. width 50 cm, diam. 20 cm
Ref. **FAUT6000-PR**



Stainless steel "Kidney dish" pan clip-on
Ref. **FAUT6000-AUG-H**



Clip-on stainless steel pan
Ref. **FAUT6000-AUG-R**



Disposable pan support
Ref. **FAUT6000-AUG-PS**

eMotio eMotio+

ELECTRICAL EXAMINATION TABLE



eMotio, innovation serving practicality

The all-electric eMotio couch is the most practical examination couch ever designed, with the aim of becoming the new assistant for the general practitioner and specialist. Promotal carried out the largest study ever conducted in medical furniture of 200 doctors from 6 European countries.

The final product, the result of three years development, allows the doctor to fully concentrate on the diagnosis, whilst gaining time and space. The patient benefits from increased comfort and lower stress for a more balanced exchange.



eMotio

| Models | Convertible Armrests & Legrests | Adjustable headrest | Tilt |
|-----------------|---------------------------------|---------------------|--------|
| eMotio 4050-20 | Accessory | Accessory | Option |
| eMotio+ 4055-20 | • | • | • |



eMotio+

High comfort upholstery

Pedal controlled elevation

2 fully configurable Quick Exam positions, that let you select your 2 favourite examination positions with a single press

TREATMENT EQUALITY

- Reception and examination in the sitting position
- Low position up to **45 cm**
- **Smooth, safe** electrical motions
- More balanced relationship between the doctor and their patient
- Retractable support handles (eMotio accessory)
- **High comfort** upholstery
- Can take patients **up to 205 kg**

EFFICIENCY

- Your favourite positions **with one press**:
2 **fully configurable examination positions**,
- Return to reception position, Couch and chair positions
- Fast, easy access **all around the couch**
- Optional gyneco position, with possibility of raising the pelvis **up to 105 cm**
(Included with eMotio+, optional with eMotio)

USE ERGONOMICS

- Reception and favourite examination positions reached **with 1 click**
- **All-electric**: height, effortlessly adjustable backrest and legrest inclination
- **Ergonomic controls**: control of elevation and Trendelenburg (optional) by pedal and swivelling control panel
- Low position **up to 45 cm**, high position **up to 96 cm**
- Electrically activated castors by sustained contact
- **Pediatric & gyneco** examination positions

NET WEIGHT
138 kg
GROSS WEIGHT
175 kg
VOLUME
0.71 m³



COLOURWAYS

| | |
|-------------------|---------|
| 32 - BLUE | CLASSIC |
| 93 - COTTAGE | |
| 35 - RED | |
| 34 - YELLOW | |
| 91 - WHITE | |
| 92 - NAVY BLUE | |
| 56 - OBSCURE | |
| 57 - ANTISTATIQUE | |

| | |
|--------------------|---------|
| 64 - GRAPE | VITAMIN |
| 66 - CANDY PINK | |
| 63 - CITRON YELLOW | |
| 67 - LAGOON BLUE | |

| | |
|----------------------|------|
| 80 - SKY BLUE | COSY |
| 81 - PALE GREEN | |
| 65 - LILAC | |
| 96 - PEWTER | |
| 82 - MEDIUM GREY | |
| 83 - NATURAL | |
| 84 - CHOCOLATE BROWN | |

OPTIONS



Electrical gyneco tilt
Ref. **40300**



Integrated mains plug
+ Equipotential terminal
EUROPE, UK, US
ref. 40400-1
DK, IT, AUS, CH
Ref. **40400-2**

ACCESSORIES



Armrests
& Legrests
2-in-1
Ref. **40923**



Pair of stirrups
Ref. **40850**



Lamp attachment
bracket
Ref. **40950**



Retractable
support
handles
(not compatible
with eMotio+)
Ref. **40922**



Adjustable headrest
Ref. **11679-01**

Chair and couch
positions reached
with 1 click

Height
adjustable
from 45 cm
to 96 cm
(105 cm
with the Tilt)

Easy access
all around the couch

quest[®] ELECTRICAL EXAMINATION TABLE



The reference for power couches!

COMFORT

- Usable width of the entire upholstered seat
- Smooth electric movements
- Possibility of combining pedal and hand controls (3 connections)

CLEANING

- Exclusive Block'n Roll system (models 2050-15/30/50)
- All outer parts are accessible for cleaning
- Covering with antibacterial protection (depending on the colour, see colour chart)

SAFETY

- Very stable 'H' shaped foot
- Patient capacity 200 kg
- Reverse Trendelenburg and backwards tilt (on some models)
- M1 fire-retardant covering (depending on the colour, see colour chart)
- Robust raising arms

ACCESSIBILITY

- Variable height from 54 to 94 cm
- Compatible with mobile hoist

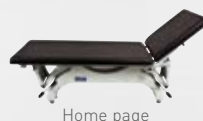


NET WEIGHT
Couch: 83 kg
Upholstery: 21 kg

GROSS WEIGHT
Couch: 121 kg
Upholstery: 25 kg

VOLUME
Couch: 0.96 m³
Upholstery: 0.28 m³

| Models | Pads | Block'n Roll [®] | Upright/ Reclining Trendelenburg | Gas-spring assisted backrest | Electric-spring assisted backrest |
|---------|------|---------------------------|--|------------------------------------|---|
| 2050-10 | • | | | • | |
| 2050-15 | | • | | • | |
| 2050-20 | • | | • | • | |
| 2050-30 | | • | • | • | |
| 2050-50 | | • | • | | • |



Standard features

Model 2050-10

- Electrical height adjustment from 54 to 94 cm
- Epoxy-coated steel structure, cloud grey
- Gas-spring or electric-spring assisted adjustable backrest
- Manual control
- Adjustment levellers under the base
- Block'n Roll® - integrated, semi-centralised, retractable roller wheel system (Ref. 2050-15, 2050-30 and 2050-50)
- Paper roll holder (max. length 50 cm - ø 12.5 cm)
- Mobile hoist compatibility clearance of 12 cm from ground
- Option of connecting 3 controls
- Load capacity up to 200 kg (tested dynamically at 250 kg and statically at 800 kg)
- Electrical medical device class 2 / Available in class 1 with option 2059-01, not compatible with 85114-01

UPHOLSTERIES

All models,
order separately



Width 65 cm..... 600150-65
Width 75 cm..... 600150-75



Width 65 cm..... 600151-65
Width 75 cm..... 600151-75



Width 73 cm..... 600150-70

OPTIONS*

* Must be requested
at the time
of order for
factory mounting



4 double roller
brake wheels ø 50 mm
(Ref. 2050-10, 2050-20)



Face hole on
flat upholstery only
600150-65 / 600150-75



Factory-mounted
upholstery



Battery



Earth protection (Class 1)

ACCESSORIES



Pair of clamps



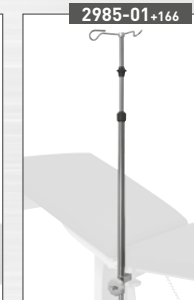
Pair of legrests



Pair of stirrups



2 hook IV pole



Auto-locking 2 hook IV
pole



Pair of legrest covers



Armrest (unitary)



Armrest cover (unitary)



Headrest
compatible with uphol-
stery only



Back extension not
compatible with formed
upholstery



Headrest



Pedal control
(Ref. 2050-10 + 2050-15)



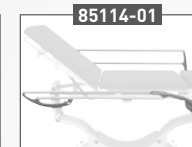
Pedal control
(Ref. 2050-20+2050-30)



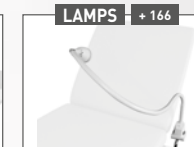
Pedal control
(Ref. 2050-50)



Adjustable paper-roll holder
(350-800 mm)



Pair of rails
Not compatible
With accessories
166, 985-01, 2985-01



See the
documentation

COLOURWAYS

| | |
|----------------------|---------|
| 32 - BLUE | CLASSIC |
| 93 - COTTAGE | |
| 35 - RED | |
| 34 - YELLOW | |
| 91 - WHITE | |
| 92 - NAVY BLUE | |
| 56 - OBSCURE | |
| 57 - ANTISTATIQUE | |
| 64 - GRAPE | VITAMIN |
| 66 - CANDY PINK | |
| 63 - CITRON YELLOW | |
| 67 - LAGOON BLUE | |
| 80 - SKY BLUE | COSY |
| 81 - PALE GREEN | |
| 65 - LILAC | |
| 96 - PEWTER | |
| 82 - MEDIUM GREY | |
| 83 - NATURAL | |
| 84 - CHOCOLATE BROWN | |



Ritter® 204 COMPACT EXAMINATION TABLE



"I am looking for a table that can fit into just 1 m²"

COMFORT

- Wide upholstery with integrated head rest
- Full slide-out drawers, accessible from both sides (possibility of placing the table in the centre of the room)
- 5 draws with all the storage space you need: 3 side, 2 front
- Retractable integrated stirrups
- 7° seat tilt
- Wide range of upholstery choices (shapes and colours, Midmark or Promotal)
- Paper retaining strap

CLEANING

- ABS moulded monobloc drawers with rounded corners for easy cleaning
- All outer parts are accessible for cleaning
- Integrated paper roll holder in backrest
- Removable and sterilizable ABS gynaecological treatment pan

SAFETY

- Patient capacity 225 kg
- Adjustment levellers under the base
- Foot step with self-blocking castors

ACCESSIBILITY

- Integrated retractable foot step
- Usable width of the entire upholstered seat, with a slight overhang and pull back at the base for easier foot placement.
- Leg extension cushion (general examination)



NET WEIGHT
113 kg

GROSS WEIGHT
125 kg

VOLUME
1.00 m³

| Models (Base + Upholstery) | Appliance inlet | Soft Touch* upholstery | Seamless* upholstery | Upholstery in Promotal Colours |
|-------------------------------|--------------------|---------------------------|-------------------------|-----------------------------------|
| 204-005 + 002-0870 | | • | | |
| 204-005 + 002-0871 | | | • | |
| 204-005 + 002-0880 | | | | • |
| 204-006 + 002-0870 | • | • | | |
| 204-006 + 002-0871 | • | | • | |
| 204-006 + 002-0880 | • | | | • |

*Only available with the Ritter colourway



Standard features

- Reclining gas-spring assisted backrest
- Manual reclining seat section
- Removable upholstery
- Sliding, retractable foot cushion
- Steel frame, with epoxy finish
- 5 monobloc polystyrene drawers (3 with bilateral opening) (on rails)
- Sliding steel foot step on self-blocking castors
- Integrated retractable and adjustable stirrups
- ABS treatment pan
- Paper roll holder (max. length 50 cm - ø 12 cm)
- Height with upholstery 84 cm
- Length with legrest extended 193 cm

ACCESSORIES



Legrests



Pair of adjustable armrests



Pair of support handles



Lamp attachment bracket



IV pole



Please refer to the documentation



COLOURWAYS

| | | |
|----------------------|--|--------------|
| 32 - BLUE | | CLASSIC |
| 93 - COTTAGE | | |
| 35 - RED | | |
| 34 - YELLOW | | |
| 91 - WHITE | | |
| 92 - NAVY BLUE | | VITAMIN |
| 56 - OBSCURE | | |
| 57 - ANTISTATIQUE | | |
| 64 - GRAPE | | |
| 66 - CANDY PINK | | |
| 63 - CITRON YELLOW | | COSY |
| 67 - LAGOON BLUE | | |
| 80 - SKY BLUE | | |
| 81 - PALE GREEN | | |
| 65 - LILAC | | |
| 96 - PEWTER | | RITTER RANGE |
| 82 - MEDIUM GREY | | |
| 83 - NATURAL | | |
| 84 - CHOCOLATE BROWN | | |
| 231 - NAVY | | |
| 233- DUSTY BLUE | | |
| 230 - MOSS | | |
| 234 CLAY | | |
| 216 PEBBLE GREY | | |
| 232 - SHADOW | | |
| 229 - PERFECT PLUM | | |
| 312 - BLACK | | |

Distributed by:



DESIGNED WITH YOU IN MIND

Trade Central Business Park
Unit 12/37 Keilor Park Drive
Keilor Park Vic 3042

Ph: 1300 442 662
sales@icona.net.au
www.icona.net.au