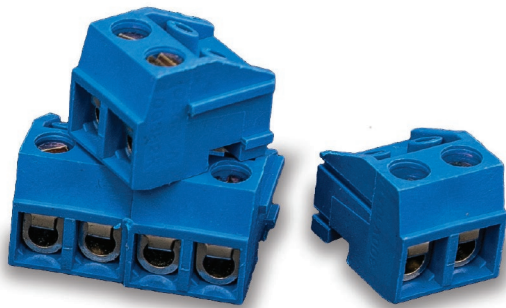


Modular PC Terminal Blocks

Designed to mount onto plug-in pin header strips. Supplied in 3.5mm and 5mm spacing configurations.

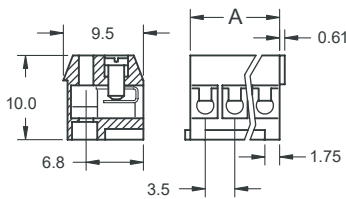


These 6 and 10 Amp modular interlocking terminal blocks are expandable to 24 positions and mount onto plug-in pin header strips and feature space-saving, low profile formats. For use, simply snap off the desired number of header pins required and insert into the PC board. The modular terminal blocks, in turn, plug into the header strip with ease.

The 6 Amp and 10 Amp types are supplied in two or three positions with 3.5mm spacing for the 6 Amp units and 5mm spacing for the 10 Amp units.

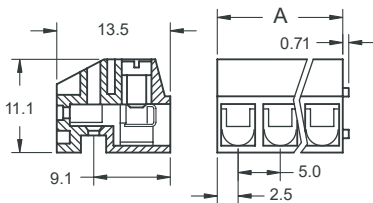
Principal features include:

- Easy access for horizontal wire entry (#22 thru #16 AWG).
- Special wire guards to help prevent damage to conductors.
- Because of accumulating tolerances, we recommend a maximum of 24 positions per row.
- Convenient screw head access on top of terminal block.



3.5mm Spacing

Part Number	Positions	A Dim	Current Rating
K8722	2	7.0	6 Amps
K8723	3	10.5	



5mm Spacing

Part Number	Positions	A Dim	Current Rating
K8725	2	10.0	10 Amps
K8726	3	15.0	

QuickSpecs

Temperature	-30°C to +120°C
Material	Housing: Blue PBT Contacts: Tin plated brass Screws: Steel, zinc plate, clear chromate
Certificate	UL 94V-0
Rated Voltage	250V
Insulation Breakdown	1500V AC/min



Header strips (sold separately).