

# WOMA

## 150M Offshore Zone 2 Group IIA

With 40 years experience in the Australasian market, WOMA's focus on seamlessly integrating positive displacement, high pressure, steam, vacuum, pneumatic, hydraulic and explosion protection technology with industry is well proven. We offer experienced and dedicated Engineering, Manufacturing, Service, Training and Customer Support services driven to provide direct technical and problem solving solutions to our valuable clients. Your critical deliverable is our concern and WOMA has the experience, knowledge, resources and skills you can rely on to meet your HSEQ, Technical and Productivity benchmarks. We aspire to provide improved service to pro-active and dynamic customers working in hazardous & non hazardous working environments.

### Engineering Services



As a technology partner we provide innovative and affordable strategies and services, which deliver long term commercial benefits, based upon clients' key business requirements. From drill-pipe cleaning to the cold cutting of subsea pipes, WOMA's strong depth of pump solutions and engineering experience will be of benefit. The company has now further invested in both expertise and new technologies to ensure that its Australasian client base is provided with appropriately designed, reliably engineered pump, manipulator and accessory solutions. Based in Western Australia, New South Wales and Queensland, their ability to provide globally researched solutions at the local level is both dynamic and cost effective for the customer.

### Training



Health and safety within the industrial services and explosion protection industries is of paramount importance. It is vital that staff are trained in accordance with the latest benchmarks in safe work practices to improve upon safety, productivity and environmental custodianship. Drawing on both industry and manufacturing experience, WOMA under a third party agreement with its Registered Training Organisation All-Ways Training Services Pty Ltd (RTO 91523) can provide Nationally Accredited training in high pressure water jetting, drain cleaning and vacuum loading operations as well as a range of non-accredited product specific technical training. Training can be delivered at our training centre or at suitable client sites nationwide.

### Technical Service Support



Whether your HP/UHP pump or vacuum loader is 'on the blink' or requires a scheduled maintenance check WOMA has the facilities and the expertise to get you back to peak performance. Our highly skilled mechanics and engineers are available to work on your unit at our fully equipped workshop or at your premises to save on transit down time.

WOMA (Australia) has drawn upon our international partnerships and has brought together a highly talented and experienced Technical Service Support team to offer on-site expertise to support your contractual and shutdown obligations. Contact us today to enquire.

### Contact WOMA



WOMA (Australia) Pty Ltd  
16 Redemptora Road,  
Henderson,  
Western Australia 6166,  
Australia

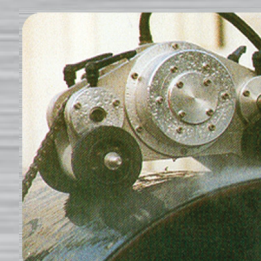
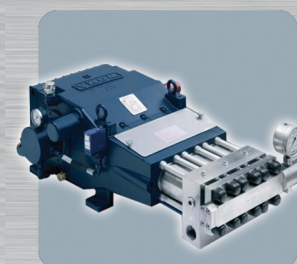
WA: +61 (0) 8 9434 6622  
NSW: +61 (0) 2 4648 2311  
QLD: +61 (0) 7 5479 3112  
hpwater@woma.com.au  
www.woma.com.au



# WOMA®

## 150M Offshore Zone 2 Group IIA T3

- Industrial High Pressure Unit
- Jetting
- Intervention
- Pressure Testing
- Cold Cutting
- Surface Preparation



Water as a tool

For more information visit

[www.woma.com.au](http://www.woma.com.au)



# WOMA

150M Offshore Zone 2 Group IIA

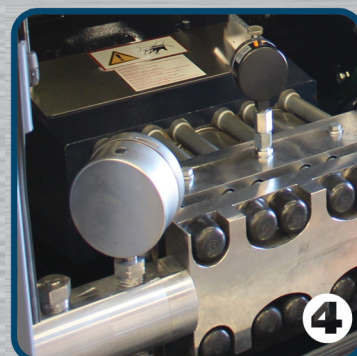
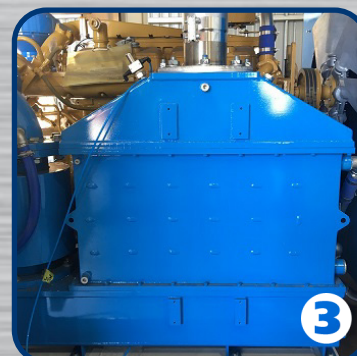
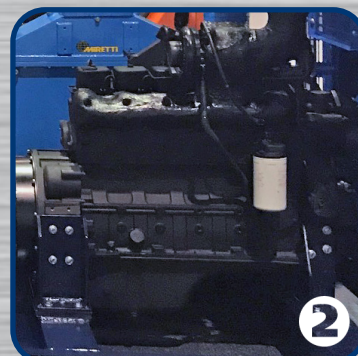
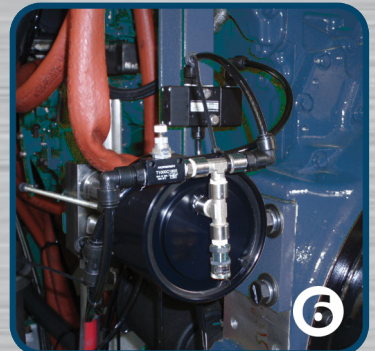


WOMA's Zone 2 Group IIA T3 Hazardous Area Rated Single Ultra High Pressure Pump Unit provides unparalleled performance in the industry. Building on WOMA's excellent oil & gas reputation and experience and adding to the WOMA suite of Offshore Oil Intervention Pumps, this example of WOMA's bespoke solutions is skid mounted with offshore rated lifting frame. Powered by a continuous 'A' Rated engine with AMOT controls, the single WOMA 150M pumps will each produce 17 l/m @ 2500Bar on a P14 plunger. Capable of high quality surface preparation, wash-down, tube, pipe, tank and vessel cleaning, concrete and steel cold cutting. In addition WOMA can produce a unit with specific pressures and flows if required.

## Technical Specs

- Pump Type = Single WOMA 150M – P14
- Nominal Flow Q = 17 litres per minute
- Operating Pressure P = 2500 Bar / 36,250 psi
- Single gun or floor blaster operation
- Pumping Medium = water NPSH 3-8 Bar
- Water Temperature Max. 60 Deg. Celsius
- Requested Drive P = 84kW each
- Driving Speed N = 1800 RPM
- Crankshaft Speed = 488RPM
- Gear Ratio I = 3.69

Pressure regulator— as spill valve and in function as 2/2-way valve continuously adjustable, pneumatically operated.



- 1 Enclosed in a Weather Protection Canopy
- 2 Cummins 6BTA
- 3 Miretti System
- 4 WOMA 150M (17 lpm @ 2500 bar)
- 5 Control Panel
- 6 Pneumatic Throttle Control
- 7 Filtration System

**WOMA**<sup>®</sup>  
Kärcher Group

Water as a tool