

# SGP Series



## SGP Series High performance plastic strapping machines

### Intuitive Operation

Plug and play design  
for easy set-up.

### Simplifies Maintenance

Built with high-efficiency  
components and few  
wear parts.

### Production Versatility

Designed for integration  
into many industries  
and applications.

### Maximizes Productivity

Applies up to 70  
straps per minute.

# Stand alone strapping machines



SGP walk-up machine, the perfect and reliable all-rounder for small to large packed goods. High performance, easy to operate and always ready for any production volume.

## SGP walk-up, efficient strapping

### ■ SGP 2000/4000

The SGP 2000/4000 with integrated strap dispenser for a space saving foot print can be operated from either side of the machine. It's the ideal solution for peak time production on the distribution floor of various industries.



### ■ SGP 4300

SGP 4300 range is available in a wide range of different sizes. Height adjustable for perfect ergonomics, easy and intuitive operation, optional roller table for easy strapping of weight products lifts this machine to the position of indispensable solutions for almost any sizes and shapes of the packages.

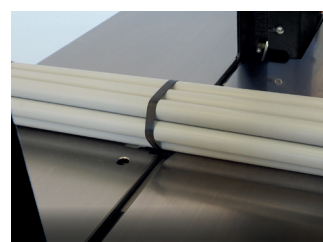
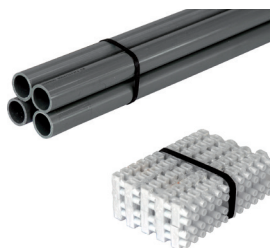


The SGP 4301 is dedicated to safely strap small products, both as Stand Alone or as fully automatic inline solution.

## SGP 4301 small anvil

### ■ Tight straps

Due to a clever and ingenious design the straps are always tight around the products without damaging sensitive product edges. The electronic controlled strapping process guarantees reproducible and accurate strap tension.



### ■ SGP 4301

The integration of the SGP 4301 machine range into fully automatic robot or conveying systems is easy. Communication with the infeed- and downstream conveyors are connected with an interface which is standard built into each S-type machine.

# Fully automatic strapping machines



Different products can be strapped and processed online without any format changeovers, due to easy operation and pre-set selectable strapping programs

## SGP for unmanned production process

### ■ High productivity

Maintenance-free drive technology, high productivity up to 65 straps per minute, uncompromising use of advanced materials, with sophisticated design, the new type of strapping solutions SMG with few moving parts can last up to 3 times longer than conventional machines.

### ■ Remote control

Online remote communication linked to a central control desk for supervising. For example a warning, that the coil with the strap is almost empty and the operator preparing coil changes in time and maximize non-stop production.



### ■ Easy handling

The easy handling and the high accessibility make it simple to feed the new strap from the reel into the threading device.

The SGP 4400 range for use as stand alone versions with idle conveyors or as fully automatic inline solution. The model SGP 4401 is dedicated to safely strap small products

## SGP 4400 side seal strapping solutions

### ■ Perfect solutions

- Accurate and fast strapping of small to large-, lightweight to heavy- and for laterally aligned products.
- Thank to the special solution any small debris emitted from customer products will fall through the chute and doesn't accumulate in the machine.
- 24/7 production with high up time for demanding applications such as white good, furniture, ply wood, logistic distribution products.



# SGP machine range



## Benefits and features

### ■ Maximizes uptime

The SGP simplifies set-up and operation. Its plug and play design coupled with touch button operation enables setting adjustments with the press of a button. Simple coil change technology limits downtime associated with coil changeovers.



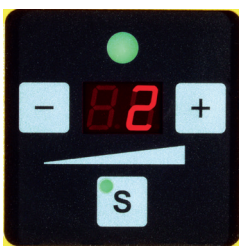
### ■ Streamlines maintenance

Manufactured with high-efficiency components and few wear parts, the SGP is built to provide long-lasting operation with minimal service requirements. It features an easily accessible design that doesn't require tools for maintenance. Plus, an enclosed strap guide system with easy fault clearance helps reduce overall maintenance requirements.



### ■ Production flexibility

The SGP is designed for integration into conveyor systems or can be used as a stand-alone machine with non-driven rollers. Available with variable options, the SMG is adaptable to different operating conditions and requirements.



### ■ High return on investment

Ensuring a competitive future due to uncompromising investment in end of line packaging equipment. Consistent use of the latest techniques guarantee reduction in production costs and investments, higher return with economic benefits over a long lifetime.

