

# monitor

the world's  
best equipment  
supported  
locally

Sales | Service | Parts | Hire | Finance

## Monitor RR9/200 Rail Boom Lift

1800 025 024  
[monitor.net.au](https://monitor.net.au)

@MonitorAUS



V1.0 - 240805





# MONITOR RR9/200

This light aerial platform is designed to make elevated railway maintenance effortless. The Monitor RR9/200 is an economical easy to transport machine for use on both rail and terrain.

Developed by Platform Basket, the Monitor RR9/200 has a hydraulically-controlled drive system that enables the positioning of the machine from tracks to railway wheels in no time!

Weighing in at just 3 t, the Monitor RR9 is capable of working on railways providing up to 9.5m working height, 4.7m horizontal outreach and a load capacity of 200kg.

The hydraulic rotation of the tracks perpendicular to the 2 railway bogies enables easy access to the railway without needing special alignment manoeuvres.

The Monitor RR9 is powered by a 10.5 KW diesel engine, or fully electric operation with lithium-ion batteries in order to make the equipment suitable for use in tunnels, subways and indoors.

**9.5m**  
WORKING HEIGHT



OPTIONAL ADD-ONS:



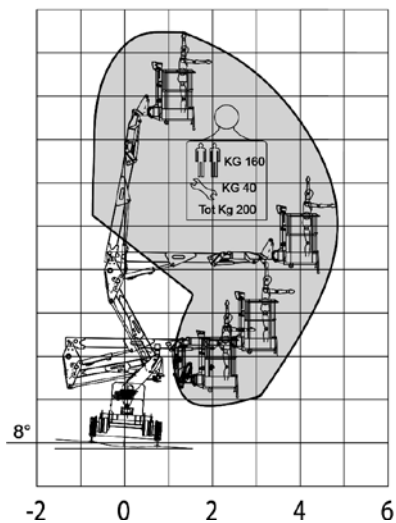




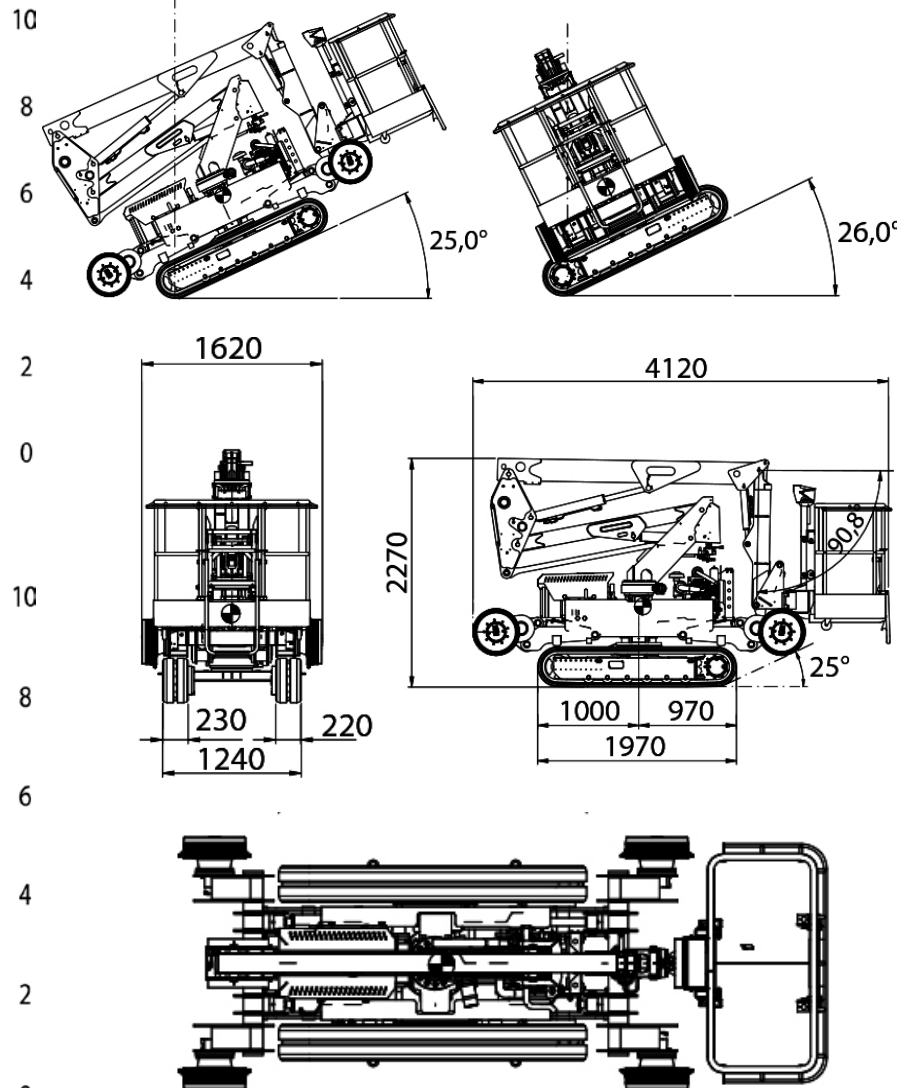
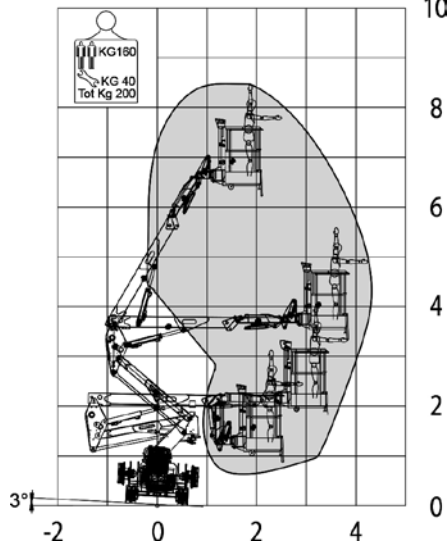


# Technical Specifications

On the railway diagram



On the road on tracks diagram



<b>Max working height</b>	<b>9.5 m</b>
Max working height in narrow set	7.5 m
<b>Max horizontal outreach</b>	<b>4.7 m</b>
Max rated capacity	2 persons / 200 kg
<b>Weight (approx.)</b>	<b>2900 kg</b>
Turret rotation	360°
Basket rotation	deg 70° + 70°
Ground pressure driving (approx)	kN/m <sup>2</sup>
Traffic load (live load) travelling	kN/m <sup>2</sup>
Auto levelling turret	Std
Gradeability lengthwise	
Gradeability sideways	
Standard engine	Kubota Diesel
Dual power options	Lithium Batteries
Tri-guage	
Drive Speed	Rail 10 km/hr (Road 2 km/hr)
Electric emergency lowering	Std

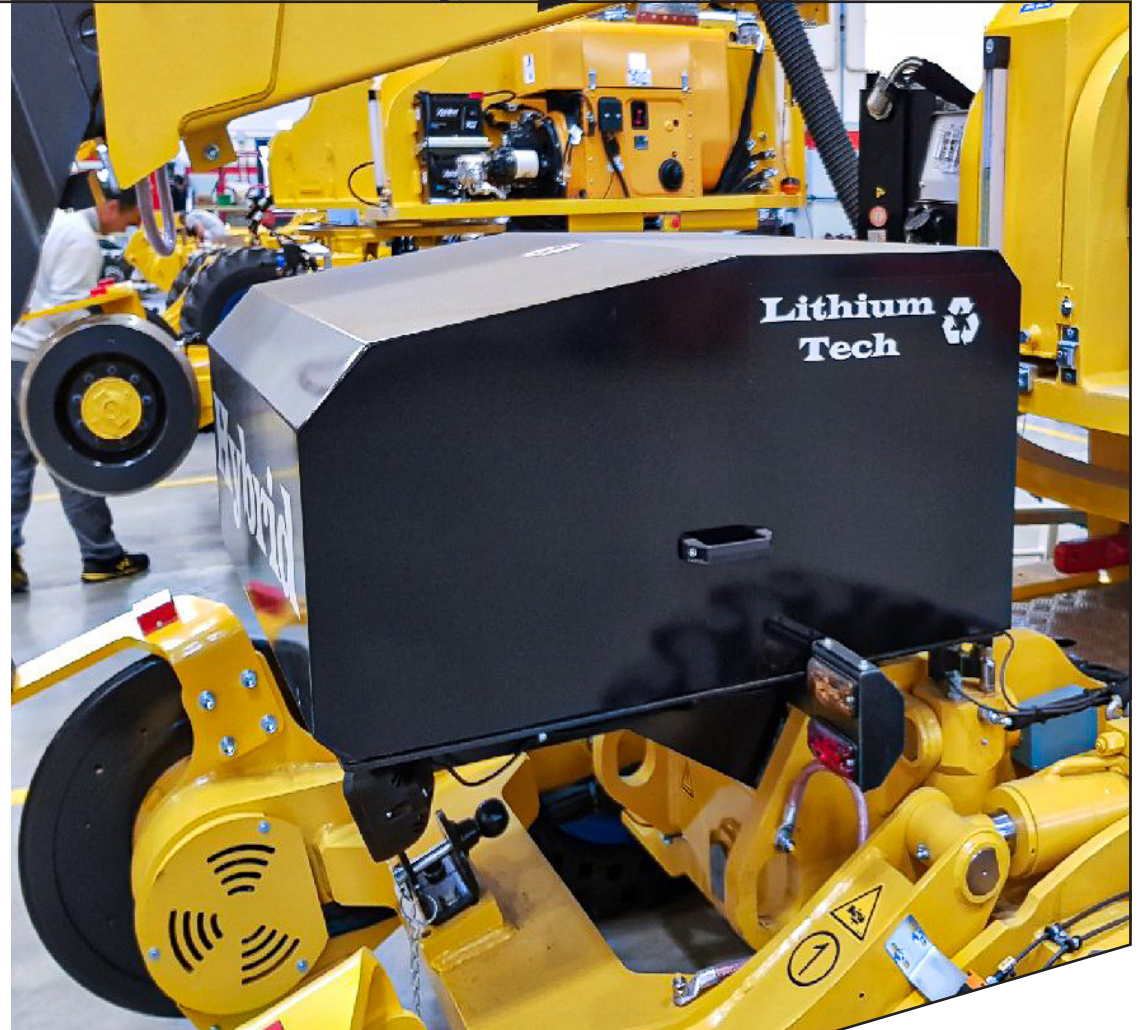
(All specs E&OE and subject to change)

Note: Specifications vary between models as well as with rail gauge changes. For more detailed information on the RR9/200, please contact Monitor.

# Optional Accessories

## Lithium Battery

With a more efficient technology that is environment friendly with the reduction of noise and emissions, and increased safety. It boasts a fully electric solution that enables it to be used in any situation—including operating inside a tunnel—with low noise, and no emissions.











zero  
downtime  
guarantee\*



# Our Locations

## Branches & Service Centres



### Tamworth

143 Gunnedah Rd  
Tamworth NSW 2340



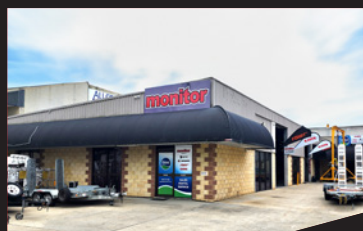
### Sydney

49-50 Cassola Pl  
Penrith NSW 2740



### Melbourne

24-28 William Rd  
Dandenong South VIC 3175



### Brisbane

191 Magnesium Dr  
Crestmead QLD 4132



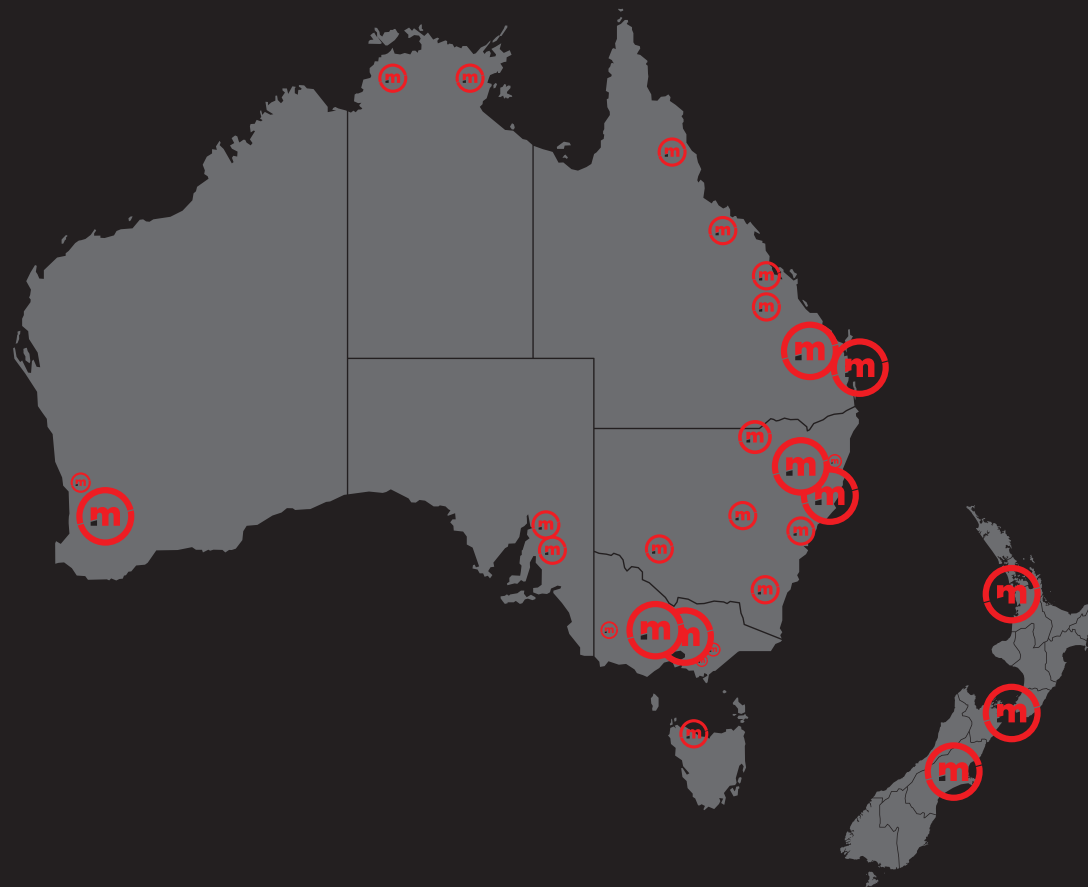
### Brisbane - Caboolture

2 Alta Drive  
Caboolture QLD 4510



### Perth

11 Reihill Rd  
Maddington WA 6109



[agent@monitor.net.au](mailto:agent@monitor.net.au)

1800 025 024  
[monitor.net.au](http://monitor.net.au)

@MonitorAUS



**monitor**

the world's best equipment supported locally

Monitor RR9/200 Rail Boom Lift

8