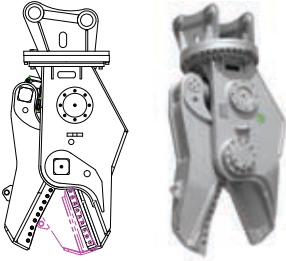


Attachment Selection

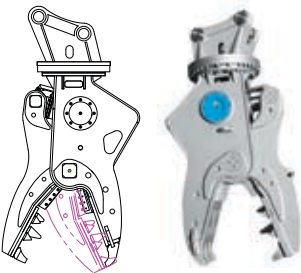
SHEAR

- \* Link Type mounting bracket.
- \* 360-degrees directional work ability.
- \* Steel structures like H-beams or I-beams can be cutted in a single cut.
- \* Easier Cutter replacement.
- \* Scientific cutting structure and excellent durability.
- \* The Speed-up valve can accelerate work speed.(option)



CRUSHER(FIXED & ROTATING)

- \* Link Type mounting bracket
- \* Enhanced durability with wear-resistant teeth material.
- \* Diversified teeth enable fine crushing, which enhances work efficiency.
- \* Lower noise, less vibration design enables works in almost any environments.
- \* Economical demolition by crushing the concrete and cutting the reinforced steel bars in it for separation purpose.
- \* 360-degrees directional work ability.
- \* Available for separating and cutting steel bars as well as breaking columns.
- \* Enabled demolition in narrow building spaces of noise regulated environments with innovative performance.
- \* The Speed-up valve can accelerate work speed.(option)

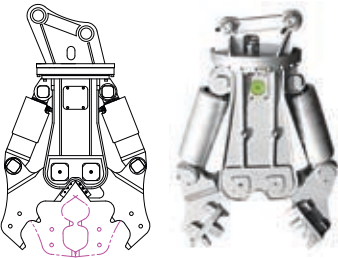


SPECIFICATION

Description	Unit	Shear	Crusher		
		HDS250	HDC210	HDC230R	
Operating Weight	kg / lb	2,200 / 4,850	1,926 / 4,246	2,250 / 4,960	
Max. Opening Width	mm / in	668 / 26.3	784 / 30.9	780 / 30.7	
Overall Length	mm / in	2,353 / 92.6	2,222 / 87.5	2,500 / 98.4	
Cutter Length	mm / in	200*3 / 7.9*3	180 / 7.1	230 / 9.1	
Crushing Force(Middle)	ton	-	115	115	
Average Cutting Force(Cutter Middle)	ton	180	180	200	
Operating Pressure	kg / psi	320 / 4,552	320 / 4,552	320 / 4,552	
Oil Flow Rate	LPM / GPM	200~250 / 52.8~66.1	200~250 / 52.8~66.1	200~250 / 52.8~66.1	
Speed up Valve	-	Option	Option	Option	
Rotating Hydraulic Motor	Motor Setting Pressure	kg / psi	160 / 2,276	160 / 2,276	
	Motor Oil Flow Rate	LPM / GPM	36~40 / 9.5~10.5	36~40	
	Revolving Speed	RPM	16~18	9.5~10.5 / 16~18	

MULTI PROCESSOR

- \* Link Type mounting bracket
- \* Stronger breaking power maximizes work efficiency.
- \* Both crushing concrete and cutting reinforced steel is available by switching Arms.
- \* Improved workability and mobility by adopting hydraulic rotating motor.
- \* Durability guaranteed by improved design.
- \* Reliability enhanced by Quality Assurance System.
- \* The Speed-up valve can accelerate work speed.(option)



SPECIFICATION

Description	Unit	Multi Processor			
		HDP230(CMS)			HDP230(SM)
Operating Weight	kg / lb	1,730 / 3,814			1,810 / 3,990
Max. Opening Width	mm / in	900 / 35.4			500 / 19.7
Overall Length	mm / in	2,044 / 80.5			2,247 / 88.5
Cutter Length	mm / in	180 / 7.1			150x3 / 5.9x3
Crushing Force(Middle)	ton	82			-
Average Cutting Force(Cutter Middle)	ton	338			120
Operating Pressure	kg / psi	320 / 4,552			320 / 4,552
Oil Flow Rate	LPM / GPM	200~250 / 52.8~66.1			200~250 / 52.8~66.1
Speed up Valve	-	Option			Option
Rotating Hydraulic Motor	Motor Setting Pressure	kg / psi	160 / 2,276	160 / 2,276	
	Motor Oil Flow Rate	LPM / GPM	36~40	36~40	
	Revolving Speed	RPM	9.5~10.5 / 16~18	9.5~10.5 / 16~18	

STANDARD EQUIPMENT

ISO Standard cabin
All-weather steel cab with 360° visibility
30° tilting cab
Safety glass windows
Rise-up type windshield wiper
Sliding fold-in front window
Sliding side window(LH)
Lockable door
Hot & cool box
Storage compartment & Ashtray
Cabin roof-steel cover
Counterweight
8,100kg + 2,200kg (Add)
Cabin FOPS/FOG (ISO/DIS 10262 level II)
FOPS (Falling Object Protective Structure)
FOG (Falling Object Guard)
Radio & USB player
12 volt power outlet (24V DC to 12V DC converter)
Handsfree mobile phone system with USB
Sun visor
Computer aided power optimization (New CAPO) system
3-power mode, 2-work mode, User mode
Auto deceleration & one-touch deceleration system
Auto warm-up system
Auto overheat prevention system
Automatic climate control
Full automatic temperature controller
Defroster
Self-diagnostics system
Starting Aid (air grid heater) for cold weather
Centralized monitoring
LCD display
Engine speed or Trip meter/Accel.
Clock
Gauges
Fuel level gauge
Engine coolant temperature gauge
Hyd. oil temperature gauge
Warnings
Check engine
Overload
Communication error
Low battery
Air cleaner clogging
Indicators
Max power
Low speed/High speed
Fuel warmer
Auto idle
Attachment angle warning sensor 20°
Three outside rearview mirrors
Fully adjustable suspension seat with seat belt
Pilot-operated slidable joystick
Console box height adjust system
Four front working lights, one rear light
Electric horn
Batteries (2 x 12V x 160 AH)
Battery master switch
Removable clean-out dust net for cooler
Automatic swing brake
Automatic fuel line deaeration
Fuel pre-filter with fuel warmer
Boom holding system
Arm holding system
Track shoes (600mm, 24")
Track rail guard
Accumulator for lowering work equipment
Electric transducer
Lower frame under cover (Normal)
Viscous fan clutch
Travel alarm
Safety lock valve for boom cylinder with overload warning device
Safety lock valve for arm cylinder

PLEASE CONTACT

www.hyundai-ce.com

2013. 05 Rev 0

OPTIONAL EQUIPMENT

Fuel filler pump (50 L/min)
Beacon lamp
Cabin lights
Track shoes
Triple grousers shoe (700mm, 28")
Triple grousers shoe (750mm, 30")
Triple grousers shoe (800mm, 32")
Double grousers shoe (600mm, 24")
Double grousers shoe (700mm, 28")
Full track rail guard
Lower frame under cover (Additional)
Tool kit
Rearview camera
Seat
Mechanical suspension seat
Air-suspension seat with heater
Air-suspension seat
Hi-mate (Remote Management System)
Rear work lamp

- \* Standard and optional equipment may vary. Contact your Hyundai dealer for more information. The machine may vary according to International standards.
- \* The photos may include attachments and optional equipment that are not available in your area.
- \* Materials and specifications are subject to change without advance notice.
- \* All imperial measurements rounded off to the nearest pound or inch.



We build a better future

Robex

380LC-9  
Demolition

\*Photo may include optional equipment.





**Robex 380LC-9**  
Demolition

- The hydraulic tilting cab provides the comfort of operating from a tilted position ensuring an improved vision and safety.
- Larger working range and exceptional stability offer high productivity in a challenging environment.

\*Photo may include optional equipment.

## Specifications

ENGINE				
MODEL			Cummins QSL	
Type			Water-cooled, 4-cycle Diesel, 6-Cylinder in-line, Direct injection, Turbocharged, Charger air cooled, Low emission	
Rated flywheel horse power	SAE	J1995 (gross)	296 HP (221 kW)/ 1,850 rpm	
		J1349 (net)	271 HP (202 kW)/ 1,850 rpm	
horse power	DIN	6271/1 (gross)	300 PS (221 kW)/ 1,850 rpm	
		6271/1 (net)	275 PS (202 kW)/ 1,850 rpm	
Max. torque			148.0 kgf-m(1,070 lbf-ft)/ 1,400 rpm	
Bore X stroke			114 x 145 mm (4.5" x 5.7")	
Piston displacement			8,900cc (540 in³)	
Batteries			2 X 12V X 160AH	
Starting motor			24V- 7.5kW	
Alternator			24V- 70Amp	

### HYDRAULIC SYSTEM

MAIN PUMP	
Type	Variable displacement piston pump
Rated flow	2 X 288.8L /min (76.3 US gpm / 63.5 UK gpm)
Sub-pump for pilot circuit	Gear pump
Cross-sensing and fuel saving pump system.	

HYDRAULIC MOTORS	
Travel	Two speed axial pistons motor with brake valve and parking brake
Swing	Axial piston motor with automatic brake

RELIEF VALVE SETTING	
Implement circuits	330 kgf/cm² (4,690 psi)
Travel	360 kgf/cm² (5,120 psi)
Power boost (boom, end arm, crusher)	360 kgf/cm² (5,120 psi)
Swing circuit	290 kgf/cm² (4,125 psi)
Pilot circuit	40 kgf/cm² (569 psi)
Service valve	Installed

HYDRAULIC CYLINDERS	
No. of cylinder bore X stroke	Boom: 2-160 X 1,500 mm (6.3"X 59.1")
	Arm: 1-170 X 1,760 mm (6.7" X 69.3")
	Mid arm: 1-135 X 1,185 mm (5.3" X 46.7")
	Crusher: 1-120 X 1,055 mm (4.7" X 41.5")

### DRIVES & BRAKES

Drive method	Fully hydrostatic type
Drive motor	Axial piston motor, in-shoe design
Reduction system	Planetary reduction gear
Max. drawbar pull	32,000 kgf (70,550 lbf)
Max. travel speed(high) / (low)	3.7 km/hr (2.3 mph) / 2.3 km/hr (1.4 mph)
Gradeability	35° (70 %)
Parking brake	Multi wet disc

### CONTROL

Pilot pressure operated joysticks and pedals with detachable lever provide almost effortless and fatigueless operation.

Pilot control	Two joysticks with one safety lever (LH): Swing and arm, (RH): Boom and crusher(ISO) 2 pedal (LH: Middle arm, RH: Cabin tilting) 4 button (LH: Crusher rotating, RH: Crusher open/close)
Traveling and steering	Two levers with pedals
Engine throttle	Electric, Dial type

### SWING SYSTEM

Swing motor	Fixed displacement axial pistons motor
Swing reduction	Planetary gear reduction
Swing bearing lubrication	Grease-bathed
Swing brake	Multi wet disc
Swing speed	9.3 rpm

### COOLANT & LUBRICANT CAPACITY

	liter	US gal	UK gal
Refilling	550	145.3	121.0
Fuel tank			
Engine coolant	45.0	11.9	9.9
Engine oil	30	7.9	6.6
Swing device-gear oil	8.0	2.1	1.8
Final drive(each)-gear oil	7.0	1.8	1.5
Hydraulic system(including tank)	410	108.3	90.2
Hydraulic tank	210	55.5	46.2

### UNDERCARRIAGE

The X-leg type center frame is integrally welded with reinforced box-section track frames. The undercarriage includes lubricated rollers, idlers, track adjusters with shock absorbing springs and sprockets, and a track chain with double or triple grouser shoes.

Center frame	X - leg type
Track frame	Pentagonal box type
No. of shoes on each side	51
No. of carrier roller on each side	2
No. of track roller on each side	9
No. of rail guard on each side	2

### OPERATING WEIGHT (HDC CRUSHER 230R)

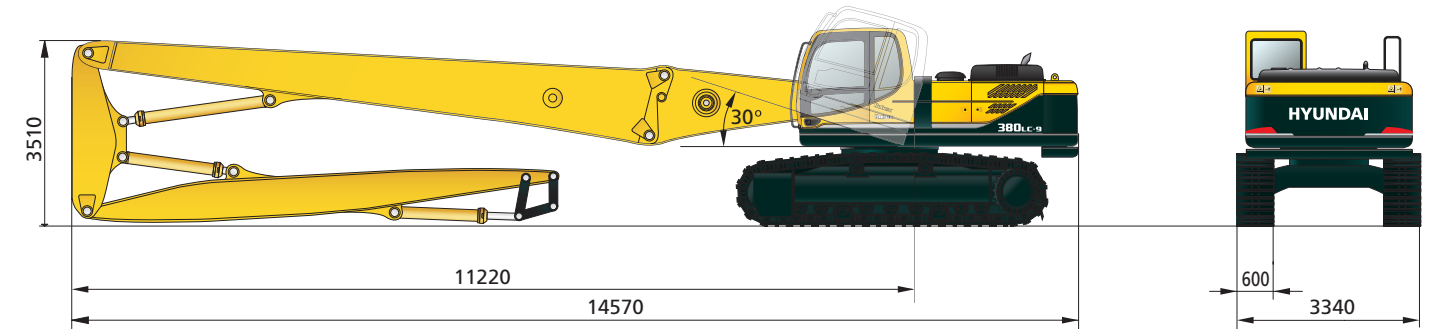
Operating weight, including 3,646mm (11' 12") base boom, 7,250mm (23' 9") Ext' boom, 2,600 (8' 6") Mid' arm, 6,600 (21' 8") end arm, lubricant, coolant, full fuel tank, full hydraulic tank, and all standard equipments.

OPERATING WEIGHT			
Shoes	Width mm (in)	Operating weight kg(lb)	Ground pressure kgf/cm²(psi)
	600 (24")	45,417 (100,130)	0.81 (11.52)
	700 (28")	45,867 (101,120)	0.70 (9.95)
	750 (30")	46,092 (101,610)	0.66 (9.39)
	800 (32")	46,317 (102,110)	0.62 (8.82)
	900 (36")	46,767 (103,100)	0.56 (7.96)

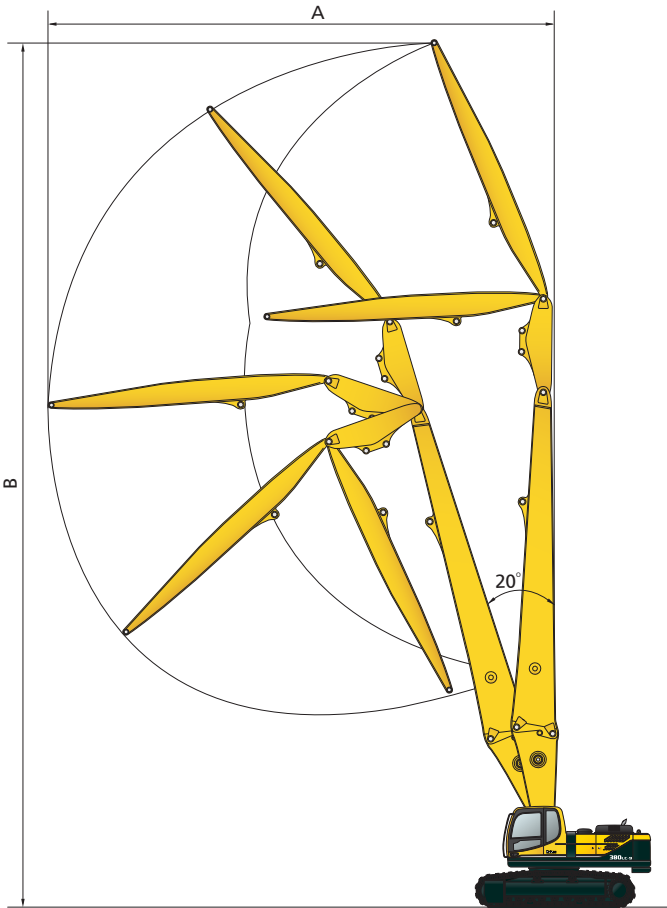
## Dimensions & Working Range

### DIMENSIONS

(Unit : mm)



### WORKING RANGE



(Unit : mm)

Boom Length	10,900
Mid Arm Length	2,600
End Arm Length	6,600
A. Max. Working Reach	13,020
B. Max. Working Height	21,200
Max. Attachment Weight	2,300 kg