

# Wall Mounted Pan



Scan QR code to view our installation notes

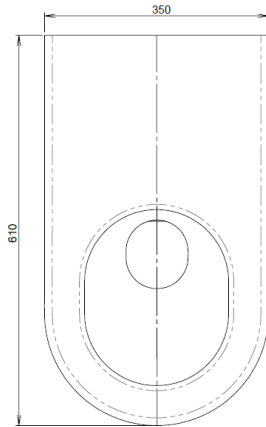


## PWM

### Product Info:

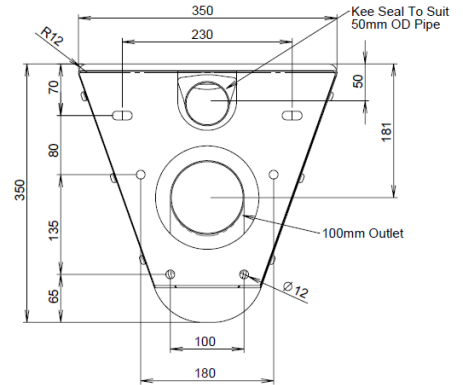
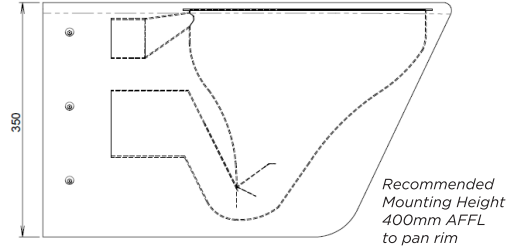
- Highly vandal resistant
- Safety radius front edge
- Unique blockage resistant trap
- 4.5/3 & 6/3 litre flush compatible
- Available with added seat (see pg 60 for options)

*NB: Seat not fitted as standard. If required, please advise. Please refer to pg 60 for seat details.*



### INSTALLATION NOTES

- 1) Fixture strength is ultimately determined by the load capacity of the supporting structure and use of appropriate fixings. 2) Additional noggins or a Chair Bracket support (code: PCB) may be required. 3) Pan is anchored in place with a separate mounting plate (supplied) that is secured to the support structure with suitable fixings (not supplied). 4) Pan is then affixed to the mounting plate via screws (supplied) in sides of pan body. 5) Pan is supplied with concealed rear inlet to suit in-wall flushing mechanisms. 6) Pan should be sealed around perimeter after installation is completed.



**To Install:** Mounting plate is secured to rear wall, then pan is connected to plate via side fixing points.