

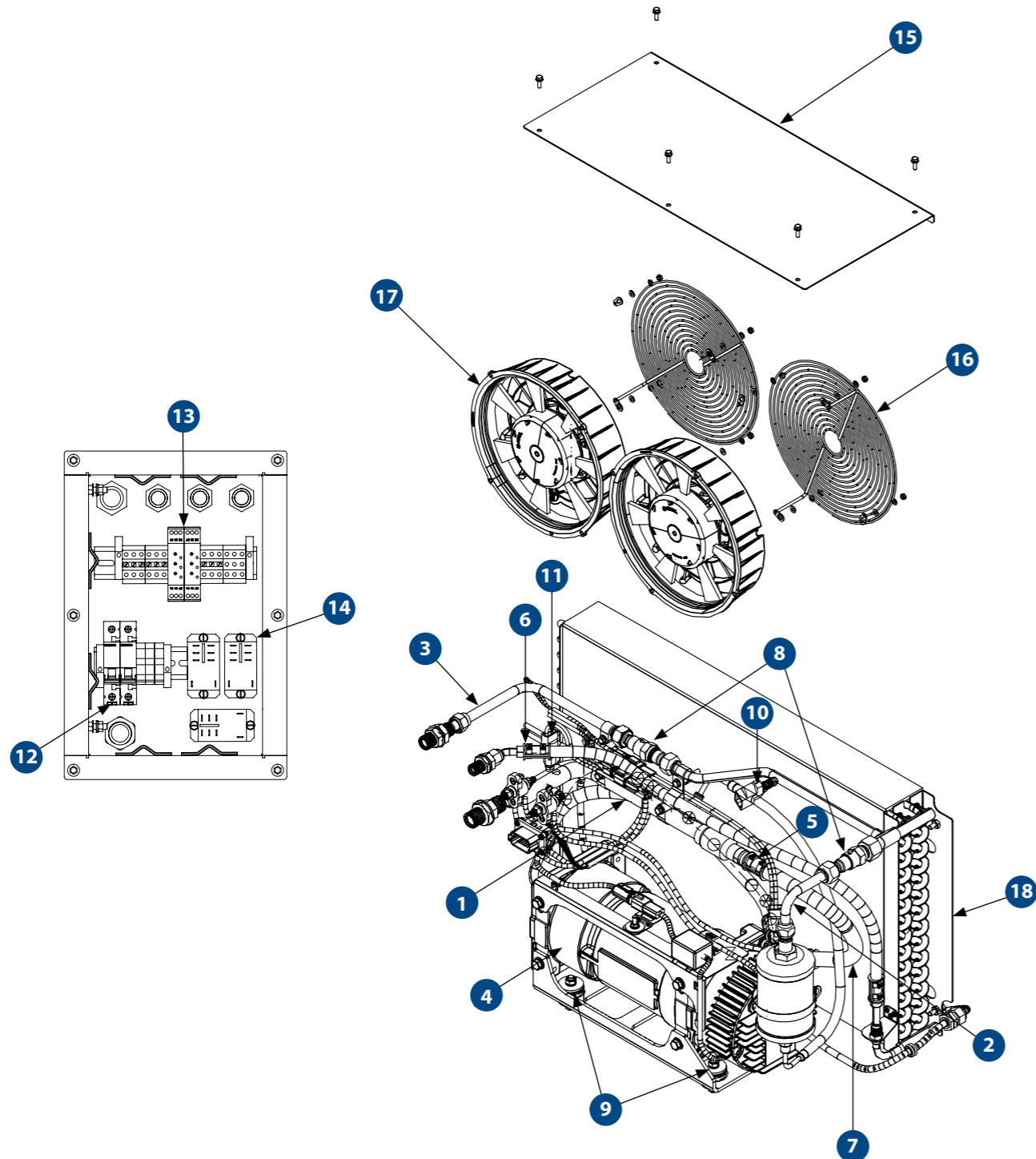


HCF6BX3

SIMPLIFIED ANTI IDLE

H0269011

Floor Mounted Condenser 24VDC



SPARE PARTS

PART NO.	DESCRIPTION	QTY
1	AS3993048 SUCTION LINE ASSEMBLY - BULKHEAD TO COMP	1
2	AS3993052 CHECK VALVE TO OIL SEPARATOR ASSEMBLY	1
3	AS3993054 DISCHARGE ASSEMBLY - BULKHEAD TO CHECK VALVE	1
4	AU2961001 COMPRESSOR 24VDC	1
5	AU5551001 OIL SEPARATOR HOSE	1
6	AU5551009 HOSE ASSEMBLY - DISCHARGE ECF6BX1	1
7	AU5551010 HOSE ASSEMBLY - SUCTION ECF6BX1	1
8	H0014480 VALVE CHECK 1/2" MF	2
9	H0102227 VIB MNT SCHR35 RUBBER 55SH	4
10	H0148597 HIGH PRESSURE SWITCH ASSEMBLY HARNESS	1
11	H0152017 ASSEMBLY LOW PRESSURE SWITCH	1
12	AU641119 CIRCUIT BREAKER 16A 1 POLE	2
13	AU672500 TIMER ON DELAY 24VDC 0.1SEC-100HR 1 POLE	2
14	H0269190 RELAY FOR 24V DC	3
15	H0279106 TOP COVER PANEL ASSEMBLY	1
16	H0279389 FAN GUARD ASSEMBLY	2
17	H0281808 FAN ASSEMBLY BRUSHLESS 24VDC DIA 305MM	2
18	H0017305 CONDENSER COIL	1

SPECIFICATIONS

	METRIC	IMPERIAL
Cooling Capacity (Remote off-engine compressor)	5 kW	17060 BTU
Cooling Capacity (Integrated DC Compressor)	3.6 kW	12280 BTU
Fan Speeds	1	1
Air Flow	670 l/s	1419 CFM
Power Supply	24VDC	24VDC
Current Draw	70 A	70 A
Refrigerant	R134a	R134a
Maximum Ambient Temperature	54°C	129°F
Weight (nominal)	60 kgs	132.2 lbs
Technical Manual Reference	SM508-3993	SM508-3993
Dimension (L X W X H)	752mm X 429mm X 480mm	29.6in X 16.8in X 18.8in

MAINTENANCE

3 YEARS / 10,800 HOURS	
AU2961001	COMPRESSOR 24VDC
H0102227	VIB MNT SCHR35 RUBBER 55SH
H0281808	FAN ASSEMBLY BRUSHLESS 24VDC DIA 305MM

Please contact SIGMA for more information including details on an overhaul scope and interval. Maintenance periods and scope are dependent on application and site conditions, and are to be used as a guide.

COMPANION ITEMS

PART NO.	DESCRIPTION
EC22H4	HOODLINER EVAPORATOR COMP 24V
TFR7BX2	ROOFTOP EVAPORATOR 24V (7KW)
EFF4BX1	FLOOR MOUNTED 4KW EVAPORATOR

OVERVIEW
PRESSURISERS
E SERIES
H SERIES
M SERIES
T SERIES
PILOT CONTROL BOXES
SERVICEABLE PARTS
UNDERSTANDING HVAC
POLICIES