



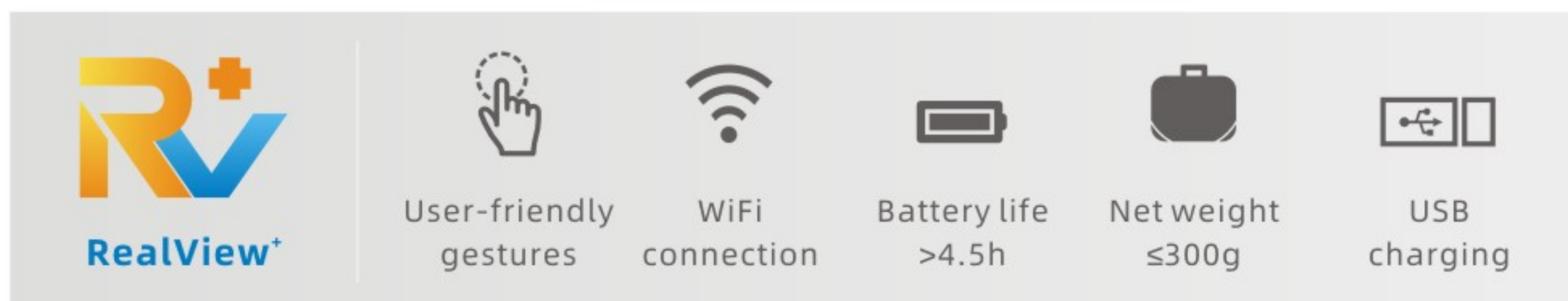
VP2

Digital Handheld Color Doppler
Veterinary Ultrasound Imaging System

SIUI

Versatility in your hand

VP2 is SIUI's another innovative design of veterinary portable ultrasound system. Non-invasive, real-time and reliable diagnostic information for animal can be obtained within fast and easy manipulation.



Nanoview

By reducing noises and artifacts, Nanoview is able to present tiny lesions in soften images with distinct tissues and enhanced edge, helping to offer reliable diagnostic results.

Xbeam

By emitting ultrasonic beams from different angles, XBeam reduces the dependence from receiving angles to create images without compromise.

Fusion THI

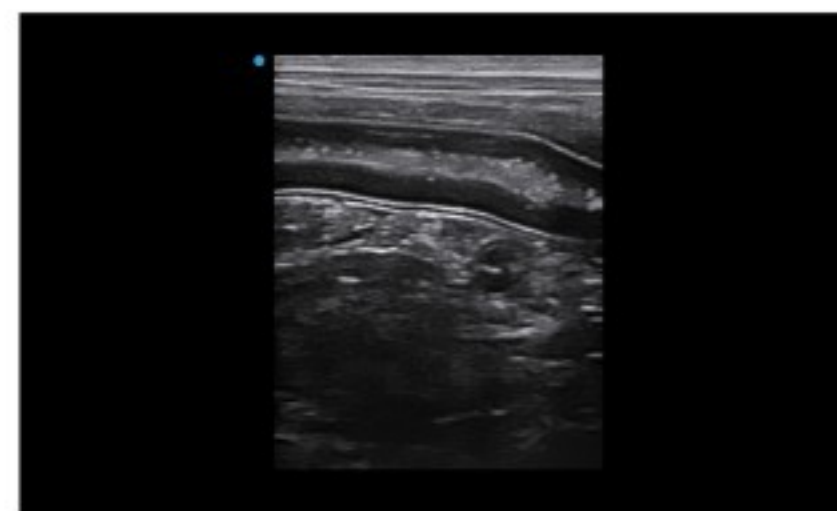
Real-time fusing the information from different frequency bands Fusion THI implements the broadband transmission and reception of harmonic waves.



Kidney



Heart



Intestine

SIUI

HEADQUARTERS:

Shantou Institute of Ultrasonic Instruments Co., Ltd.
Add: No.77, Jinsha Road, Shantou 515041 Guangdong, China
Tel: 86-754-8825 0150 Fax: 86-754-8825 1499
<http://www.siui.com> E-mail: siui@siui.com

HONG KONG OFFICE:

Shantou Institute of Ultrasonic Instruments (HK) Co., Ltd.
Add: Room 2101, Tung Chiu Commercial Center 193 Lockhart Road, HK
Tel: 852-2891 6722 Fax: 852-2891 6723



SIUI



SIUI Healthcare



SIUI1978



SIUI1978