

ROTO-BALER APS1400

PRODUCT SPECIFICATIONS

A highly-automated baler, the Bergmann APS1400 Roto Baler has a rotating compaction head which rolls and crushes dry waste products inside a plastic bale bag on a pallet. Automatic compaction cycles make the PS1400 Roto Baler extremely efficient to operate – very popular with retail stores as it requires minimal labour to operate.

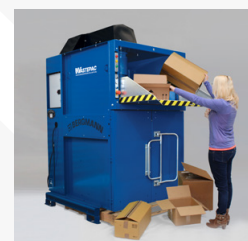


Features

- High compaction force optimising transport payloads
- Suitable for a range of waste material
- Easy & safe to operate
- Robust design & build - engineered for long life and optimum performance

Options

- Custom feed hopper
- Roof
- Water sprinkler system
- Odour control
- Pull-down chute
- Special-purpose compaction head



DIMENSIONS	
Height	2574 mm
Width	1232 mm
Depth	1744 mm
Feed Height	1470 mm
Weight	900 kg
PERFORMANCE	
Power	415 V 3 Phase
Motor	1.5 kW + 0.55 kW
Drum Rotation Speed	20 rpm
Noise level	55 dB
Cycle Time	Pre-set
Compaction Ratio*	10:1
LOADING APERTURE	
Height	662 mm
Width	1052 mm

**Dependent on material*

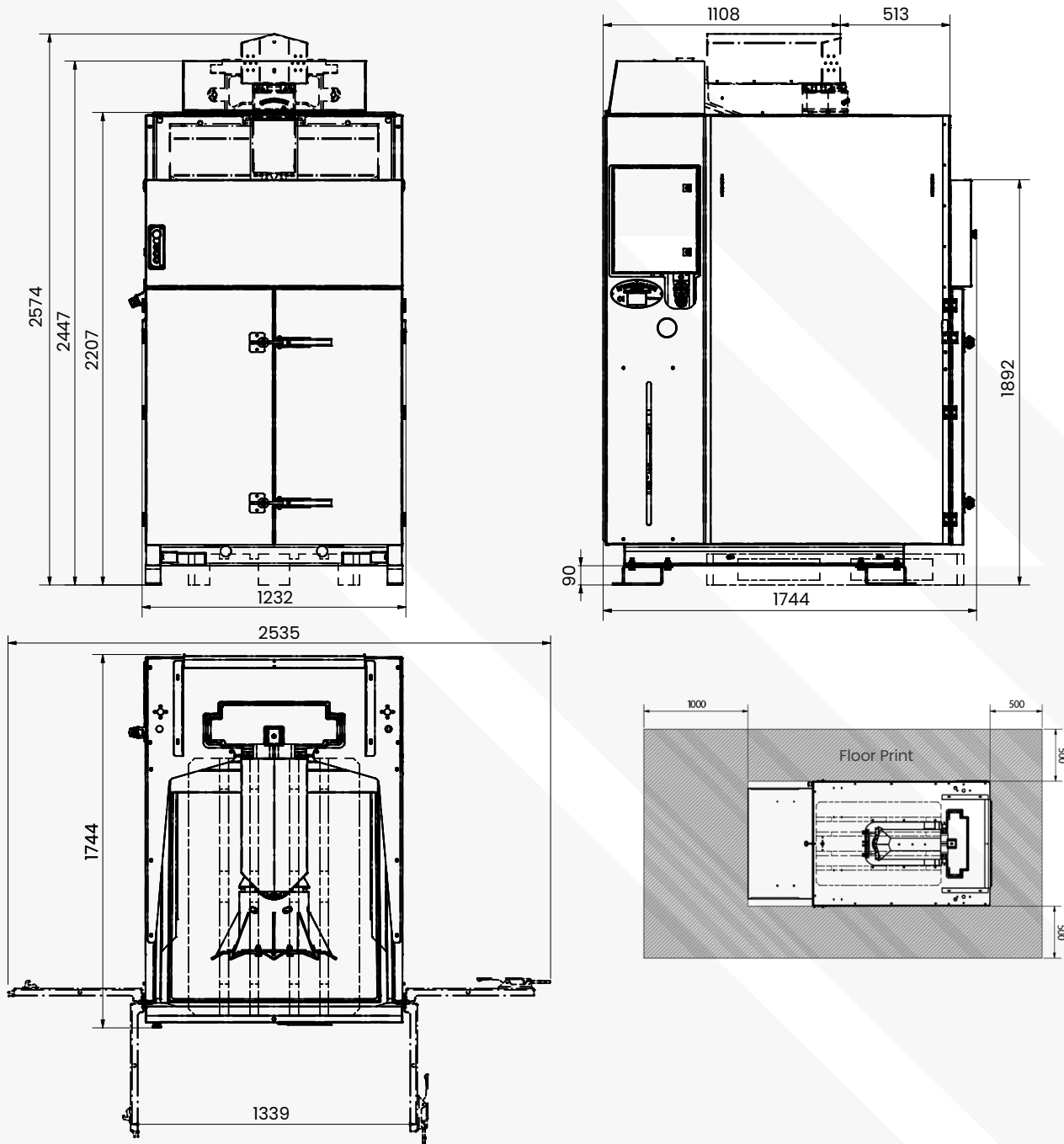


VERTECH


BERGMANN MACHINES

ROTO-BALER APS1400

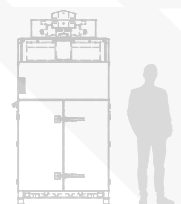
PRODUCT SCHEMATICS




Compaction Ratio
Up to 6:1


Motor
1.5 kW & 0.55 kW


Waste Types
Cardboard,
General Waste &
Processed Food



Size Comparison