

# ***The Recovery Revolution***

***Variable Smart Speed 1 HP Motor Accelerates During Vapour Recovery***

- Protected from Voltage Drop  
Able to run at 190 VAC
- Industry Leading Vapour Recovery with 1HP  
[ 0.745 kW ] DC motor running at 3000 RPM
- Rain & Water resistant
- Oversized Condenser & Hi-flow fan, reduces  
refrigerant Pressure & Temperature
- Light Weight at only 10kg
- Suitable for use with A2L class Refrigerants



Model  
MR45INT



## Welcome to the Recovery Revolution

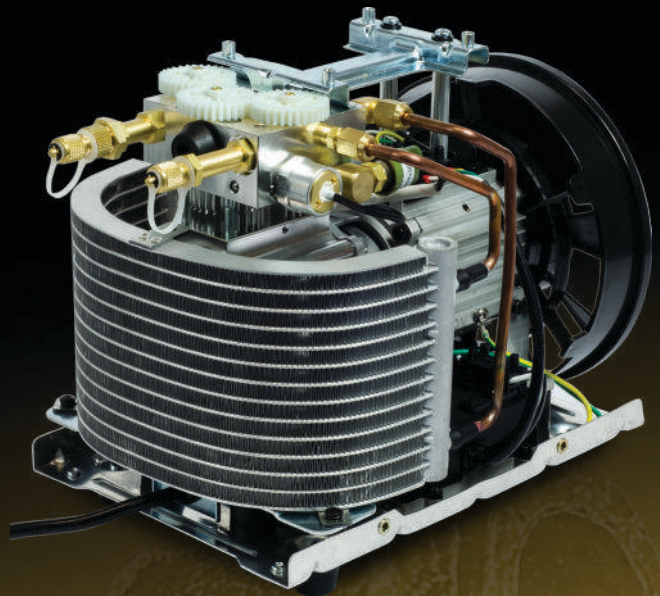
The Fieldpiece MR45INT has onboard system monitoring that adjusts motor performance to handle liquid and run twice as fast on vapour. MR45INT also steps up low voltage at the power plug to deliver full power to the motor where high voltage drop is a problem.

With a powerful 1HP motor and super-sized condenser, this machine excels on longer and hotter jobs. The easy-to-read display, lightweight (10kg), straight hose connection ports, and single dial make this machine user-friendly while being tough enough for everyday use, even in the rain.

- **Extra large condenser**
- **Easy access ports**
- **Long life, low friction ceramic coated cylinders**
- **Dual cylinder compressor**
- **Easy hose connections and built in power cord storage**
- **Large backlit display with status messages**

## Specifications

- **Display:** Backlit dual LCD
- **Pressure Sensor Range:** -76 cmHg to 4100 kPa
- **High Pressure Shut-off:** 3850 kPa, nominal
- **Resolution and Units:** 1 psig, 1" Hg, 0.05 bar, 0.01 Mpa, 5 Kpa, 2 cmHg
- **Final Recovery Vacuum:** 38 cmHg
- **Compressor:** Dual cylinder reciprocating
- **DC Motor:** 1 HP (variable smart speed) [ 0.745 kW ] 3000 RPM
- **Power Source:** 190 to 255 VAC @ 50Hz 1 phase
- **Max Current Draw:** 7.0 AAC
- **Valve:** Single dual-route ball valve
- **Input Port Filtration:** 9 mm mesh screen, stainless
- **Dimensions:** 376 mm x 250 mm x 344 mm
- **Weight:** 10kg
- **Warranty:** 1 year
- **Patent Pending**



*Oversized condenser for cooler vapour recovery*



*Bright digital display with status codes*



*Easy access ports for one-handed operation*



*3,000 RPM for faster recovery*