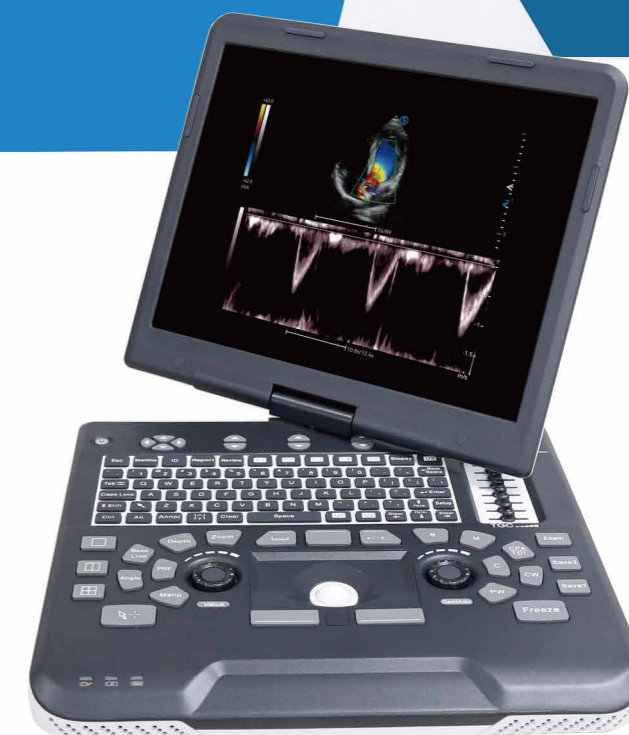


**SIUI**



# Apogee 1000

DIGITAL COLOR DOPPLER  
ULTRASOUNDIMAGING SYSTEM



**MIAI**

Anything, Anytime, Anywhere  
Live Service for Imaging

**SIUI**

**HEADQUARTERS:**

Shantou Institute of Ultrasonic Instruments Co., Ltd.  
Add: No.77, Jinsha Road, Shantou 515041 Guangdong, China  
Tel: 86-754-8825 0150 Fax: 86-754-8825 1499  
<http://www.siui.com> E-mail: [siui@siui.com](mailto:siui@siui.com)

**HONG KONG OFFICE:**

Shantou Institute of Ultrasonic Instruments (HK) Co., Ltd.  
Add: Room 2101, Tung Chiu Commercial Center 193 Lockhart Road, HK  
Tel: 852-2891 6722 Fax: 852-2891 6723



All rights reserved to SIUI 2022  
Apogee 1000 EN 10220823

# AMAZING VERSATILITY

Featuring Realview<sup>+</sup>, an innovative imaging platform that includes advanced imaging technologies, Apogee 1000 presents significantly updated image quality at a faster response speed and amazing versatility in different applications.

Lightweight, net weight of 6.1 kg (including 2 batteries)

15-inch high resolution and angle-adjustable monitor

Backlit keyboard

Detachable lithium battery

Height-adjustable trolley



# SMOOTH USER EXPERIENCE

## Understand you more.

- ▶ **Pop-up window** appears when pressing power button, offering options of shutdown, hibernation or wake up
- ▶ **Zoom-in Cursor** is automatically activated during measure line tracing and small lesions viewing
- ▶ Scanning can be **paused and resumed** anytime
- ▶ **Data protection mechanism** safeguards information from loss through backup and recovery

## Support fast operation.

- ▶ **Navigation Bar** visualizes buttons, offering operation guidance
- ▶ **Pinned worksheet** allows multiple measurements preview without exiting the scanning page
- ▶ **S-view** offers images or cines comparison between different patients or previous results

## Tailor to your needs.

- ▶ Abundant **measurement and calculation packages** available for customization
- ▶ **S-station** allows tailoring report templates and thesaurus to specific needs (e.g., cardiology, GYN/OB, MSK)

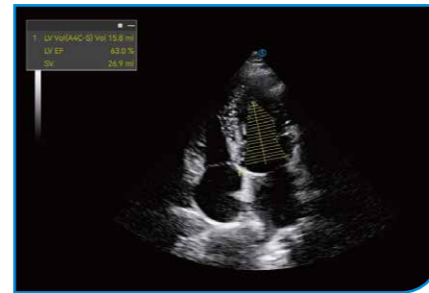


# DIAGNOSE WITH CONFIDENCE

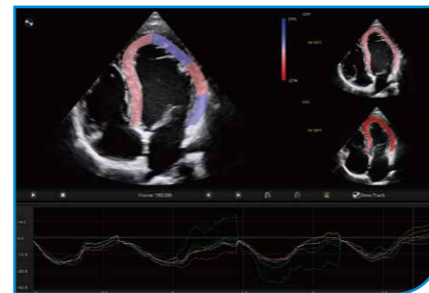
## Cardiology

## Pediatrics

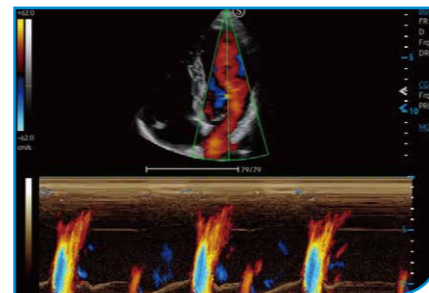
**Auto EF** automatically traces the endocardium during systole and diastole cycle and calculates the EDV and ESV to output an accurate EF result.



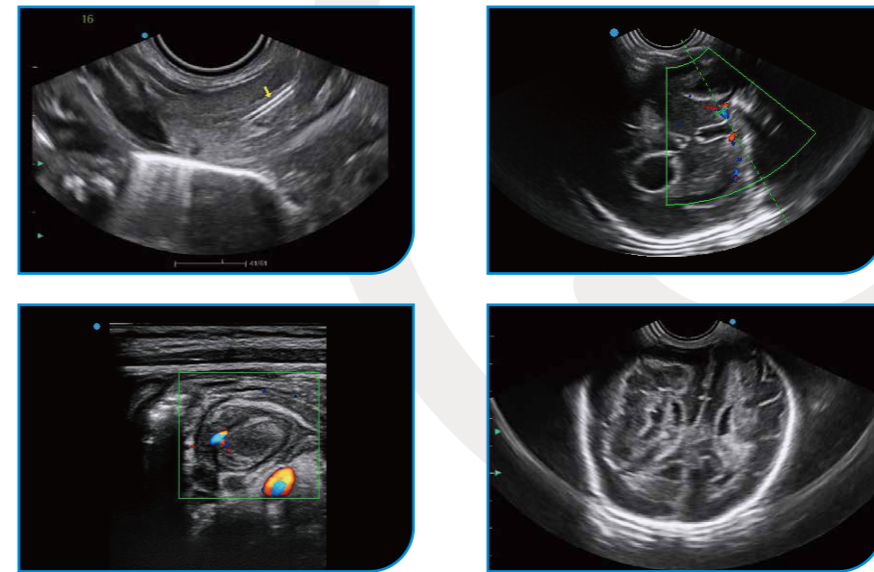
**Auto SG** automatically evaluates LV global strain and segmental wall motion, with a Bull's Eye displays precise analysis of LV GLS and LV WMS.



**Color M** combines Color Doppler and M-mode to accurately display the 2D and time relationship among high velocity flow, reflux, jet, valve and heart wall to better evaluate diastolic function.



Pediatric patients often present acute abdominal pain such as appendicitis and mesenteric lymphadenitis. Some may come with congenital heart disease or cerebral injury. Apogee 1000 can address these diagnostic challenges and manage various cases, delivering high-quality pediatric care.



As pediatric patients have smaller anatomies compared to adults, pediatric examination requires probes with smaller footprints.



**P3**

- Phased Array Probe  
Center Frequency: 3 MHz



**P5**

- Phased Array Probe  
Center Frequency: 5 MHz



**V6LN**

- Micro Convex Probe  
Center Frequency: 6.5 MHz



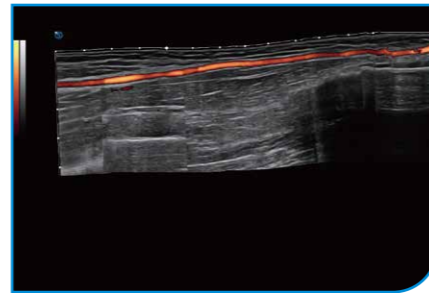
**P5**

- Phased Array Probe for Children  
Center Frequency: 5 MHz

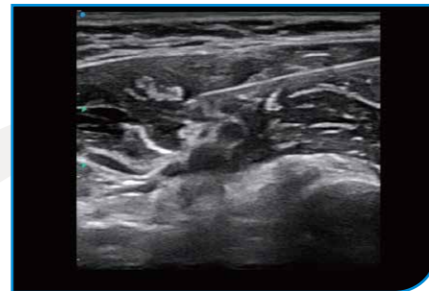
# MSK

# Radiology

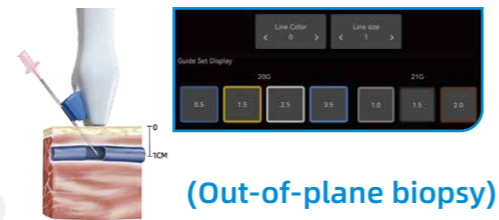
**Panoscope** provides a color panoramic view of large tissues and vessels in real time, which is very useful to spot lesions.



**Needle Enhancement** improves the visibility of the needle and highlights the needle tip, facilitating better visualization and accuracy during in-plane or out-of-plane biopsy.



**Out-of-plane biopsy** gives more flexibility for adjusting needle direction. Various presets of needle size and depth are available.



(Out-of-plane biopsy)

**In-plane biopsy** allows you to see the whole needle and needle tip.



(In-plane biopsy)



## L8LC

- High Density Linear Probe  
Center Frequency: 7.5 MHz



## L10LC

- Linear Probe  
Center Frequency: 10 MHz



## L8LC

- High Density Linear Probe  
Center Frequency: 7.5 MHz



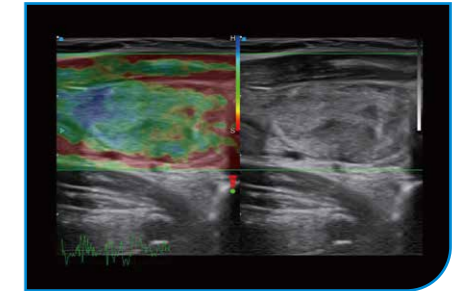
## C3LN

- Convex Probe  
Center Frequency: 3.5 MHz

**Contrast Harmonic Imaging (CHI)** uses less contrast agent to visualize thyroid, liver and oviduct structure, boosting diagnostic outcome with improved image resolution and sensitivity.



**Strain Elastography** offers a real-time tissue stiffness assessment to detect potential abnormalities within normal tissue.



**VS Flow** increases the sensitivity of low velocity blood flow with high resolution, which supports greater diagnostic confidence.

