

# LGMA

## LM938



### COMPACT WHEEL LOADER

**Engine Power**

76 kW / 102 HP

**Bucket Capacity**

1.00 m<sup>3</sup>

**Operating Weight**

5,100 kg

**Rated Load**

2,000 kg

# LM938

<b>Engine Power</b> 76 kW / 102 HP	<b>Bucket Capacity</b> 1.00 m <sup>3</sup>
<b>Operating Weight</b> 5,100 kg	<b>Rated Load</b> 2,000 kg

## PERFORMANCE AND VERSATILITY

- Standard auxiliary hydraulics
- High departure angles
- Certified Cabin
- Complimentary Hydraulic Quick Hitch

## OPERATOR CONFORT

- Prefect driver visibility
- Adjustable suspension seat
- Pilot proportional controls
- Easy to entry and egress
- Low noise
- Reverse camera

## SERVICE AND MAINTENANCE

- Wide opening engine hood and side covers
- Side-by-side radiator and oil cooler are easily inspected
- Easy to access grease points
- Tilt-forward operator's station provides full access to engine and hydraulic components
- Coded hydraulic hoses making them easy to identify



# AT A GLANCE

## VALUE, DURABILITY AND STRENGTH

- Strongest center hinge
- Large diameter swing pin
- O-ring face seal hydraulic fittings
- Moisture/dust resistant electrical connectors
- Hydraulic lines are routed through boom for protection
- Optional side-open service access
- Optional emergency stop button



# LM938

## OPERATOR ENVIRONMENT



### OPERATOR STATION

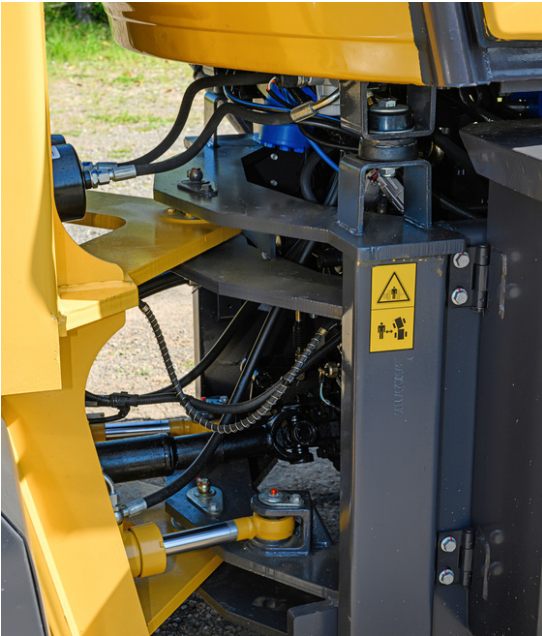
- Spacious canopy with unobstructed floor provides the operator with ample leg room
- Complimentary Hydraulic Quick Hitch
- Fully adjustable suspension seat reduces operator fatigue
- PPC controls are low effort and provide fine control
- Gauges and indicator lights are easy to read



# COMPACT WHEEL LOADER

LM938

## FEATURES



### Strongest Center Hinge

The 3-layered center hinge is designed to withstand considerable horizontal and vertical stress. It can spread forces over a greater area for a long bearing life.



### Counterweight Design

The sloped design of the counterweight can achieve very high departure angles, while its compact shape improves manoeuvrability in confined spaces.



### Full view cabin

The cab with excellent visibility provides the driver with all-round visibility. Reversing camera, air conditioning and fan increase the driver's working comfort.



### Hydraulic Quick Hitch

The standard hydraulic quick hitch of the whole series has two sets of hydraulic lines. By combining a variety of different attachments, you can increase your productivity and adapt to the work environment.

# LM938

## SPECIFICATION

### ENGINE

Model	Huafeng 4102 diesel turbo
Pattern	In-line, 4 cylinder
Rated power / speed	76 kW / 2,400
Weight	320 kg

### ELECTRICAL SYSTEM

Operating voltage	24 V
-------------------	------

### HYDRAULIC SYSTEM

Operating type	Hydraulic
Lifting time	5 s
Falling time	4 s

### TRANSMISSION

Type	Hydraulic torque converter
Pattern	Automatic
Gear shift	Double H / L
Axle	AWD, LG20 hub reduction

### DRIVES AND BRAKES

Service brake	Air hydraulic disc brake
Parking brake	Hand brake

### UNDERCARRIAGE

Tyre	16 / 70-20
------	------------

### OPERATING WEIGHT (APPROX.)

Operating weight	5,100 kg
Rated load	2,000 kg

## STANDARD AND OPTIONAL EQUIPMENT

### Standard Equipment

---

- Hydraulic Quick Hitch
  - 4-in-1 Multi Purpose Bucket
  - General Purpose Bucket
  - Pallet Fork
- 

### Optional Equipment

---

- Bale Clamp
  - Drill Auger
  - Paddock Grapple
  - Sieve Bucket
  - Sweeper
  - Rotating Fork Rack
  - Light material bucket
- 

### MACHINE DIMENSIONS

---

Bucket capacity	1.0 m <sup>3</sup>
Rated load	2,000 kg
Operating weight	5,100 kg
Overall dimension (mm)	6,250 x 2,020 x 2,950
Wheel base	2,530 mm
Wheel track	1,570 mm
Bucket width	2,000 mm
Max. dumping height	3,500 mm
Max. dumping distance	700 mm
Turning radius	4,500 mm

---

Product designs, specifications and/or data in this document are provided for informational purposes only and are not warranties of any kind. Product designs and/ or specifications may be changed at any time without notice. The only warranties that apply to sales of products and services are LGMA standard written warranties, which will be furnished upon request.

**LGMA**



**[lgma.com.au](https://lgma.com.au)**